

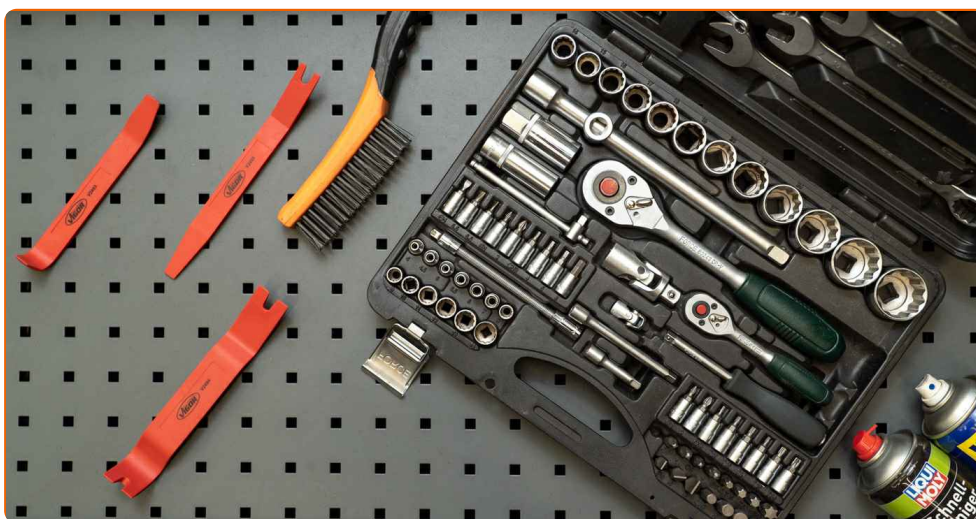


How to change wheel
arch liner on a car –
replacement tutorial

VIDEO TUTORIAL



YOU MAY NEED THE FOLLOWING:



- a new wheel arch liner
- new fasteners
- a set of suitable tools
- a universal spray cleaner and a wire brush
- WD-40 spray
- tools for removing plastic parts

BUY TOOLS

Please note!

- The wheel arch liners are made from either plastic or fabric
- Fabric components are not waterproof and deform over time
- The wheel arch liners can be secured with plastic clips which vary in design
- The parts can be fastened with self-tapping screws

1

Remove the wheel to gain access to the arch liner

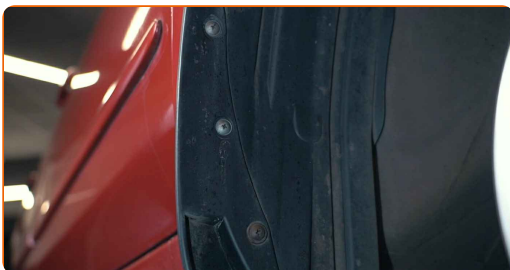


2

Use a car lift or a jack with jack stands and wheel chocks

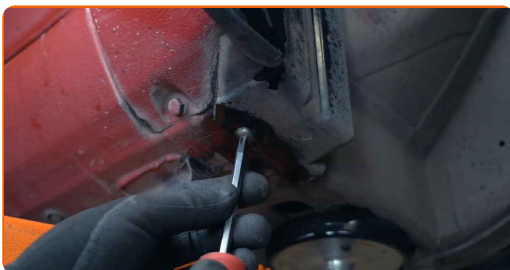
3

Take a look at the design of the fasteners



4

Clean them and then unscrew them



5 Carefully pull the wheel arch liner and remove it from its attachment points



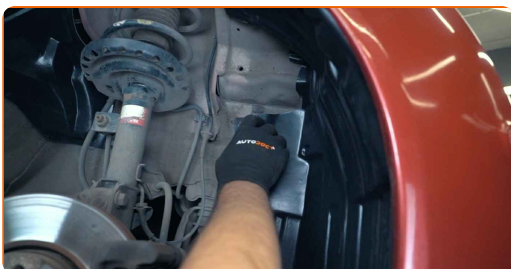
Please note!

- If the wheel arch liner consists of two or more parts, you only need to replace the damaged part
- New wheel arch liners come without any fasteners. These should be purchased separately

6 Thoroughly clean the attachment points of the wheel arch liner as well as the spots where it comes into contact with the car body



7 Insert the wheel arch liner into the mounting seat



8

Make sure that its mounting holes are aligned with the corresponding points in the wheel arch



9

Secure the wheel arch liner



Be careful!

- Don't apply excessive force

10

Make sure to use all the fasteners provided. If even one of these is missing, the wheel arch liner will not be properly secured to the car body and will break quickly

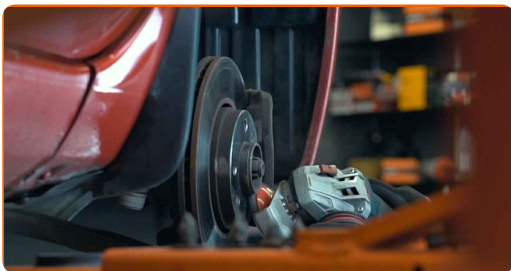


Important!

- As long as the fasteners are not screwed all the way in, you can adjust the position of the wheel arch liner

11

Clean the wheel's mounting seat and the mating surface of the wheel



12

Make sure that the surfaces are even and rust-free. Treat them with an anti-corrosion agent



Please note!

- It is not advisable to use any additional fasteners to secure the liner to the body
- This can cause the car body to corrode

AUTODOC – TOP QUALITY AND AFFORDABLE CAR PARTS ONLINE

AUTODOC MOBILE APP: GREAT DEALS AND CONVENIENT SHOPPING



A GREAT SELECTION OF SPARE PARTS FOR YOUR CAR

WHEEL ARCH LINER: A WIDE SELECTION

(i) DISCLAIMER:

The document contains only general recommendations that may be useful for you when you perform repair or replacement work. AUTODOC shall not be liable for any loss, injury, damage of property occurring in the repair or replacement process due to incorrect use or misinterpretation of the provided information.

AUTODOC shall not be liable for any possible mistakes and uncertainties in this guide. The information provided is for information purposes only and cannot replace advice from specialists.

AUTODOC shall not be liable for incorrect or hazardous usage of equipment, tools and car parts. AUTODOC strongly recommends to be careful and observe the safety rules when performing repair or replacement works. Remember: usage of low quality auto parts does not guarantee you the appropriate level of road safety.

© Copyright 2023 – All the contents of this website, in particular texts, photographs and graphics, are protected by copyright. All rights, including reproduction, publication, editing and translation rights, are reserved by AUTODOC SE.