



How to change pollen  
filter on a car –  
replacement tutorial

## VIDEO TUTORIAL



## REQUIRED TOOLS:



- Phillips screwdriver
- Torx wrench
- Torx bit

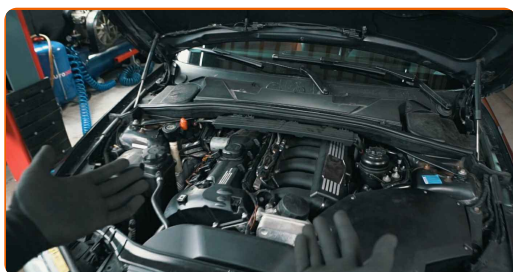
**BUY TOOLS**

Whether a car is equipped with a pollen filter depends on a number of factors:

- the region the vehicle was designed for
- the vehicle's trim level
- the vehicle's year of manufacture

1

Locate the filter element



2

It can be found on or next to the panel under the windscreen

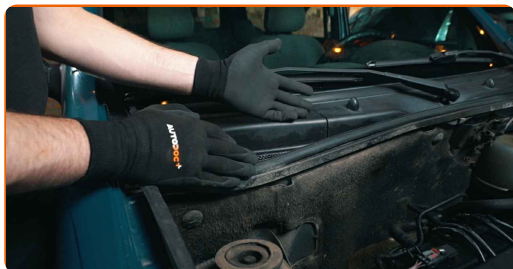


3

In some cases, there is a special cover providing easy access to the filter

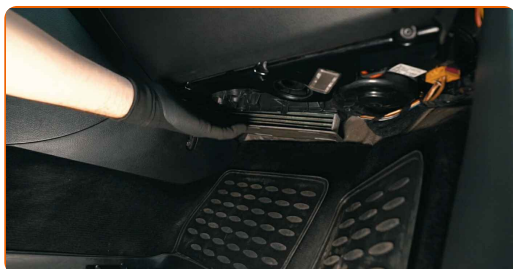


**4** In other cases, you will have to raise the upper panel a little



**5** The filter may also be accessed from the passenger compartment

**6** Below the glovebox



**7** Behind the glovebox



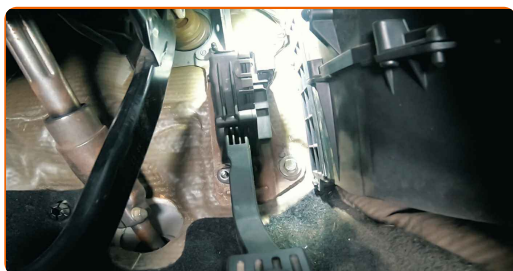
**8** Behind the side panel



**9** On the driver's side, near the accelerator pedal



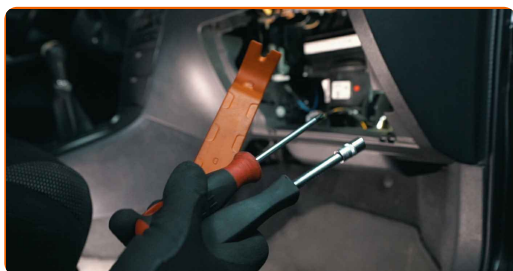
**10** In the latter case, you will have to remove the accelerator pedal and some plastic parts



**Please note!**

- Some vehicles may be fitted with two filters: for coarse and fine particles

**11** Prepare the necessary tools



**12** Remove the pollen filter cover



**13** Extract the filter



**Be careful!**

- Prevent any dirt from entering the system

**14** Look at the marks on the new filter. They may indicate the air flow direction, which should be considered when installing the part. Incorrect mounting may result in the air bypassing the filter



**15** Install the new pollen filter



**Important!**

- Be careful to avoid damaging the filter element when mounting it

**16**

If the filter is located in a frame, the frame should be cleaned

**17**

If the filter is located upstream of the air recirculation flap, you can clean its mounting seat after first closing the flap



# AUTODOC – TOP QUALITY AND AFFORDABLE CAR PARTS ONLINE

**AUTODOC MOBILE APP: GREAT DEALS AND CONVENIENT SHOPPING**



**+ AUTODOC**

GET IT ON  
**Google Play**

 Download on the  
**App Store**

**Download**

**A GREAT SELECTION OF SPARE PARTS FOR YOUR CAR**

**POLLEN FILTER: A WIDE SELECTION**

## **DISCLAIMER:**

The document contains only general recommendations that may be useful for you when you perform repair or replacement work. AUTODOC shall not be liable for any loss, injury, damage of property occurring in the repair or replacement process due to incorrect use or misinterpretation of the provided information.

AUTODOC shall not be liable for any possible mistakes and uncertainties in this guide. The information provided is for information purposes only and cannot replace advice from specialists.

AUTODOC shall not be liable for incorrect or hazardous usage of equipment, tools and car parts. AUTODOC strongly recommends to be careful and observe the safety rules when performing repair or replacement works. Remember: usage of low quality auto parts does not guarantee you the appropriate level of road safety.

© Copyright 2023 – All the contents of this website, in particular texts, photographs and graphics, are protected by copyright. All rights, including reproduction, publication, editing and translation rights, are reserved by AUTODOC SE.