

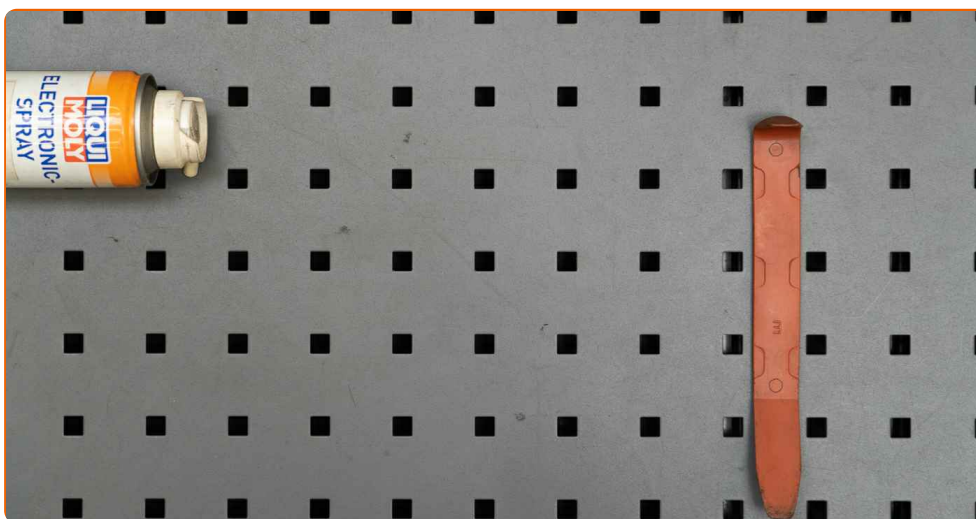


How to change glass for
wing mirror on a car –
replacement tutorial

VIDEO TUTORIAL



REQUIRED TOOLS:



- Dielectric grease
- Fender cover
- Plastic trim tool

BUY TOOLS

Please note!

- The replacement procedure is identical for the right and left side mirror glass.

1

Use a fender protection cover to prevent damaging paintwork and plastic parts of the car.



2

Protect the paintwork of the mirror housing. Use the masking tape.

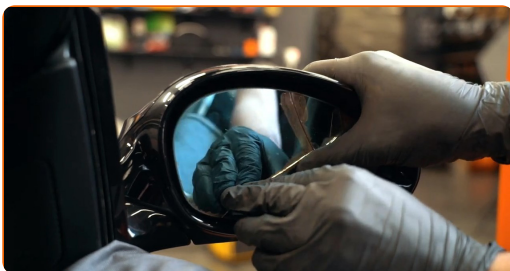


3

Carefully examine the new mirror glass to understand the design of the part.

4

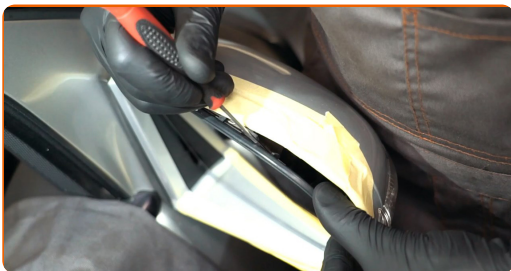
Tilt the mirror glass out of the housing.



5

Check if the mirror glass has retaining clips.

6 Release the mirror glass clips if necessary.



7 Carefully release the mirror glass from its attachment.



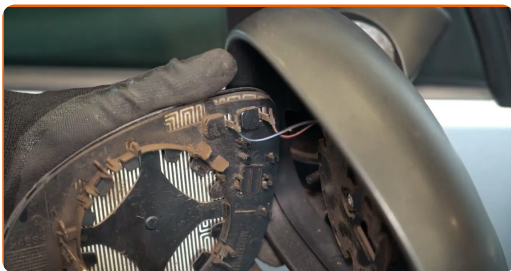
Please note!

- The mirror glass is usually secured to the housing with locking tabs.
- In some cases, the mirror glass is equipped with additional guiding elements.

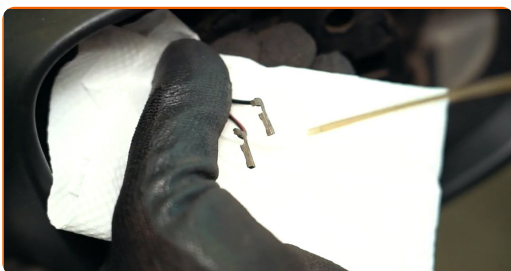
8 Remove the mirror glass.



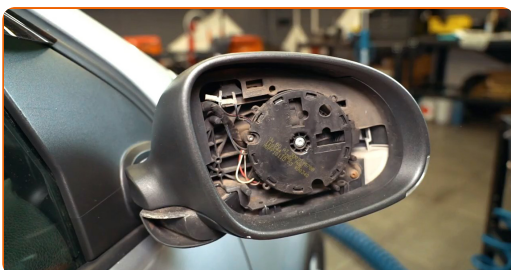
9 Unplug the electrical connectors if necessary.



10 Treat the electrical connectors.



11 To install the mirror glass correctly, examine its mounting seat.



12 Plug in the electrical connectors if they were detached.



13 Install the new mirror glass.

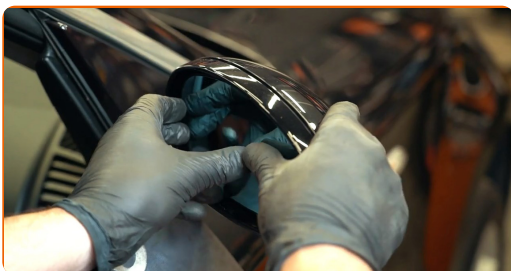


AUTODOC recommends:

- Make sure the mirror glass is positioned correctly. It should be aligned with the locking tabs on the housing.

14

Secure the mirror glass by pushing down on its centre.



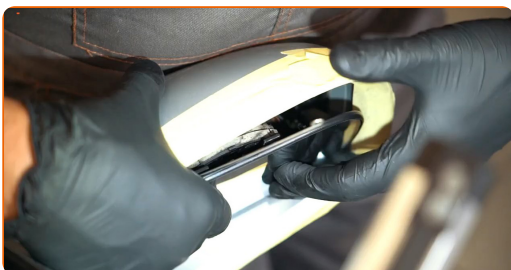
15

If the mirror glass has additional guiding elements, insert them into their corresponding slots.



16

If the mirror glass has retaining clips, snap them in place.



17

Remove the masking tape.

18 Clean the mirror glass.



19 Remove the fender protection cover.



20 Switch on the ignition. This is necessary in order to make sure that the component operates properly.

21 Switch off the ignition.

AUTODOC – TOP QUALITY AND AFFORDABLE CAR PARTS ONLINE

AUTODOC MOBILE APP: GREAT DEALS AND CONVENIENT SHOPPING



+ AUTODOC

GET IT ON
Google Play

Download on the
App Store

Download

A GREAT SELECTION OF SPARE PARTS FOR YOUR CAR

GLASS FOR WING MIRROR: A WIDE SELECTION

DISCLAIMER:

The document contains only general recommendations that may be useful for you when you perform repair or replacement work. AUTODOC shall not be liable for any loss, injury, damage of property occurring in the repair or replacement process due to incorrect use or misinterpretation of the provided information.

AUTODOC shall not be liable for any possible mistakes and uncertainties in this guide. The information provided is for information purposes only and cannot replace advice from specialists.

AUTODOC shall not be liable for incorrect or hazardous usage of equipment, tools and car parts. AUTODOC strongly recommends to be careful and observe the safety rules when performing repair or replacement works. Remember: usage of low quality auto parts does not guarantee you the appropriate level of road safety.

© Copyright 2023 – All the contents of this website, in particular texts, photographs and graphics, are protected by copyright. All rights, including reproduction, publication, editing and translation rights, are reserved by AUTODOC SE.