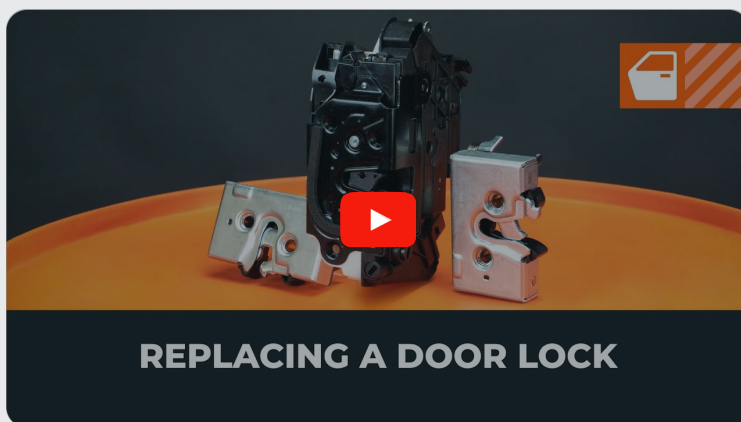




How to change door lock  
on a car – replacement  
tutorial

## VIDEO TUTORIAL



### REQUIRED TOOLS:



- Phillips screwdriver
- Dielectric grease

**BUY TOOLS**

## Please note!

- Before you start, switch off the power supply and make sure that the car keys are outside the vehicle

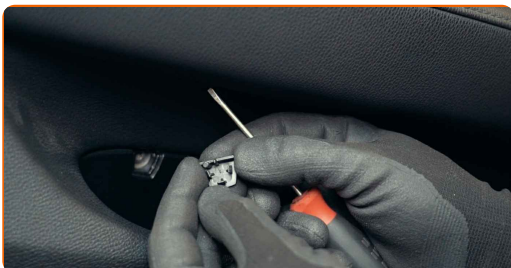
- 1 To access the component, remove the door trim. To do this, familiarise yourself with the design and location of the fasteners



## Please note!

- The fasteners are usually located behind the door handle trim and along the door trim panel's perimeter

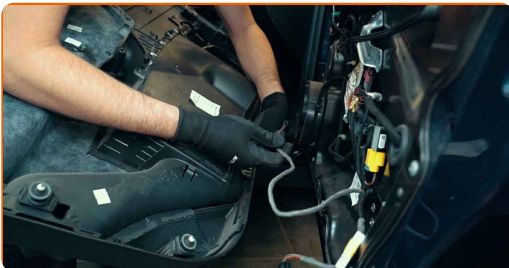
- 2 Carefully inspect the door trim panel for any covers or additional fasteners



- 3** In addition to screw fasteners, the trim panel is also secured with clips. Release them, starting at the bottom, and then remove the panel



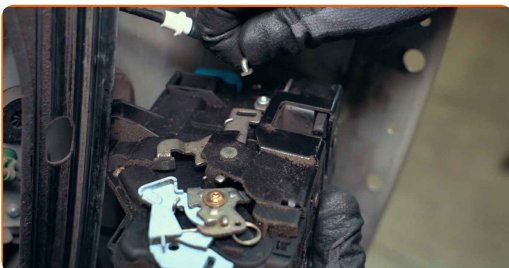
- 4** Next, you need to disconnect various connectors and other components from the door panel



**Caution!**

- Depending on the design, you might have to remove the insulation

- 5** Once you have access to the component, disconnect the cables and any other parts obstructing its removal



6

You can then remove the component itself

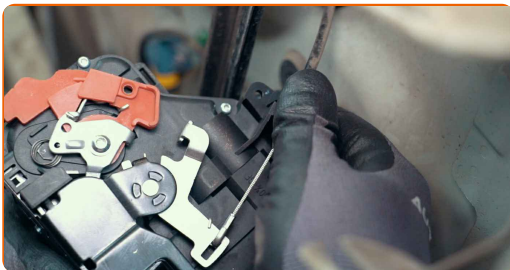


### Important!

- Other designs may require you to disassemble the door further and remove the window regulator mechanism
- Alongside this, there are many cars where only the door trim needs to be removed to access the internal components

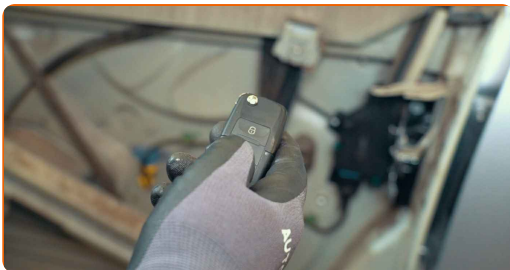
7

When installing a new part, connect the rods and cables and treat the power connectors with a special agent. Follow the correct tightening torques



8

Before final assembly, make sure to check that all components are functioning properly



9

Reassemble the door and related parts in reverse order



# AUTODOC – TOP QUALITY AND AFFORDABLE CAR PARTS ONLINE

**AUTODOC MOBILE APP: GREAT DEALS AND CONVENIENT SHOPPING**



**A GREAT SELECTION OF SPARE PARTS FOR YOUR CAR**

**DOOR LOCK: A WIDE SELECTION**

## **(i) DISCLAIMER:**

The document contains only general recommendations that may be useful for you when you perform repair or replacement work. AUTODOC shall not be liable for any loss, injury, damage of property occurring in the repair or replacement process due to incorrect use or misinterpretation of the provided information.

AUTODOC shall not be liable for any possible mistakes and uncertainties in this guide. The information provided is for information purposes only and cannot replace advice from specialists.

AUTODOC shall not be liable for incorrect or hazardous usage of equipment, tools and car parts. AUTODOC strongly recommends to be careful and observe the safety rules when performing repair or replacement works. Remember: usage of low quality auto parts does not guarantee you the appropriate level of road safety.

© Copyright 2023 – All the contents of this website, in particular texts, photographs and graphics, are protected by copyright. All rights, including reproduction, publication, editing and translation rights, are reserved by AUTODOC SE.