

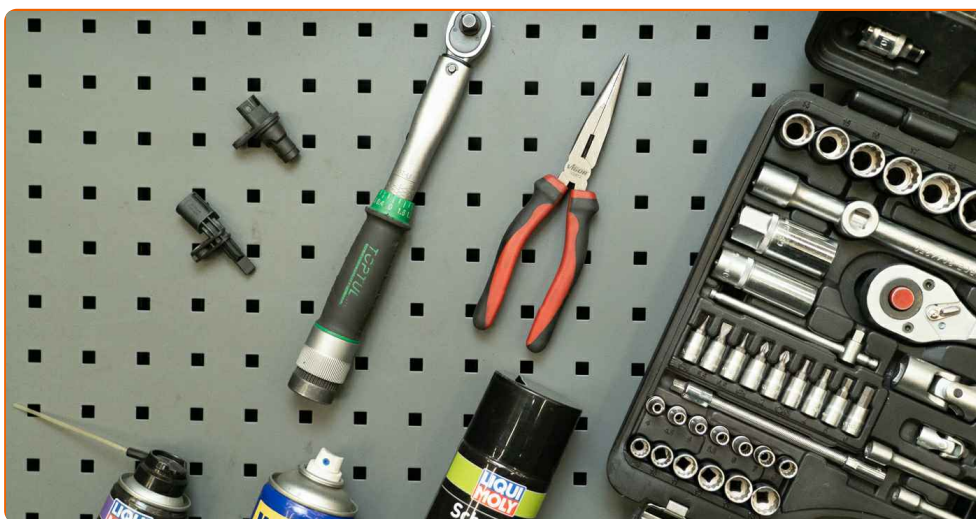


How to change ABS  
sensor on a car –  
replacement tutorial

## VIDEO TUTORIAL



## THINGS YOU MAY NEED:



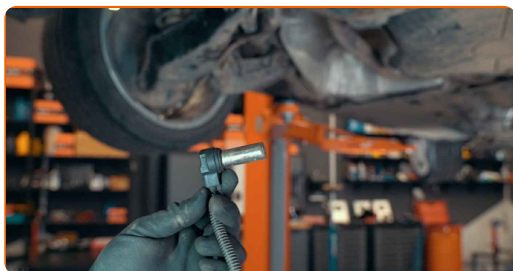
- a new ABS sensor
- a set of suitable tools
- universal spray cleaner and a wire brush
- WD-40 spray
- electronic spray
- long reach pliers or adjustable pliers
- torque wrench

**BUY TOOLS**

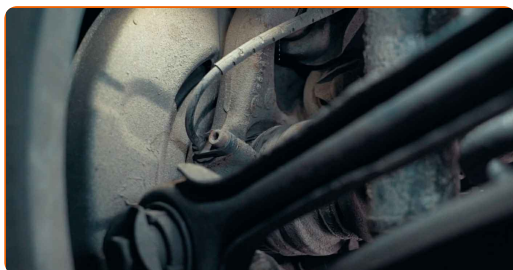
Please note!

- The wheel speed sensors are a part of the vehicle's anti-lock braking system, ABS
- The system helps to correctly distribute the braking force to each of the wheels depending on the road conditions
- The ABS can include other systems such as the anti-slip regulation system and the stability control system

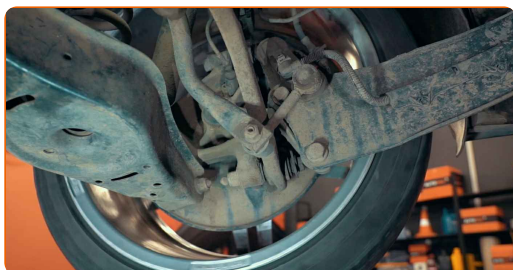
1 ABS sensors are usually installed near the wheel rotation axes



2 They read the rotation speed of each wheel and send this data to the ECU



3 If any one of the sensors is faulty, the system switches to the emergency mode



4

The ABS sensor reads information from a magnetic or toothed ring



Depending on the car design it can be located:

- on the CV joint housing
- or in the wheel bearing
- or on the brake disc

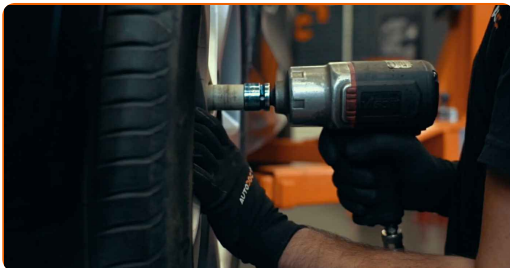
5

You can determine which ABS sensor is faulty by scanning the car's computer

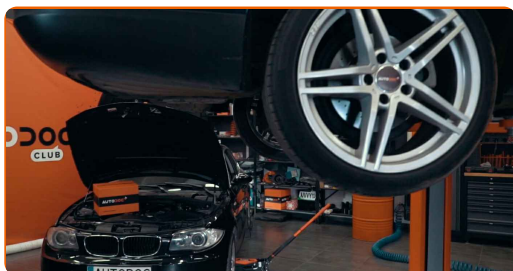


6

In most cases, you should remove the wheel to access the sensor



**7** To do this, first raise the vehicle



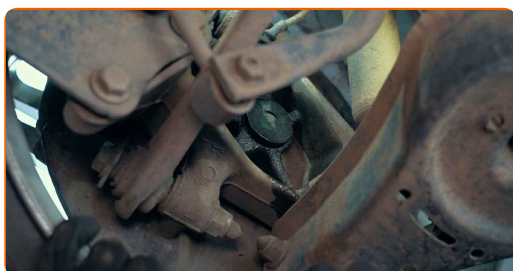
**8** Use a car lift or a jack



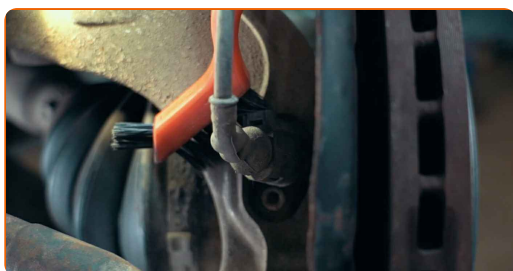
**Important!**

- When using a jack you also need to use jack stands

**9** In some cars you can replace an ABS sensor without removing the wheel. In this case, you just need an inspection pit or ramp



**10** Clean the area you're working on and the connectors



Please note!

- Depending on its design, the sensor:
- may have a connector
- or be a one-piece element with a section of wire that is attached to the car body

11

Remove the ABS sensor connector



12

Inspect the terminals for damage and corrosion

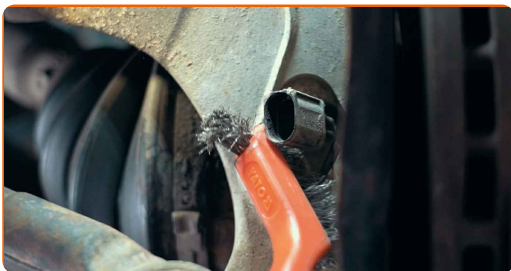


13

The sensor's metal housing might be severely corroded



**14** Be sure to clean it thoroughly to make it easier to remove



**Important!**

- In some cases, additional tools may be needed to replace the sensor

**15** Unscrew the ABS sensor fastener



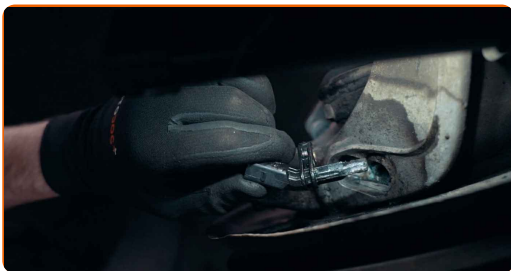
**16** To remove the sensor, rock it from side to side in its seat



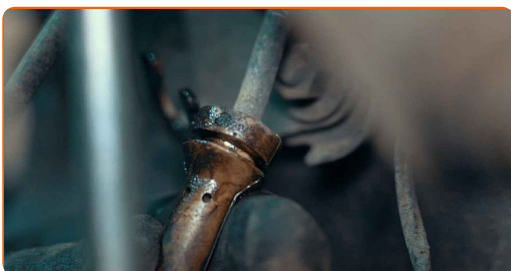
**Be careful!**

- Do not apply excessive force to avoid damaging the sensor body

**17** Remove the sensor from its mounting seat



**18** Remove the sensor wiring harness if necessary



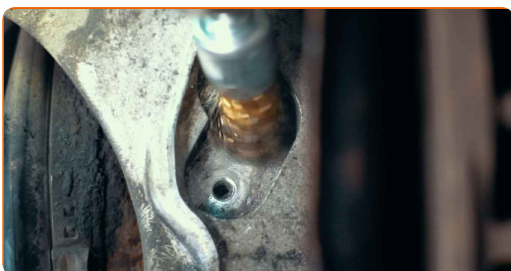
**19** In some cases, corrosion can make removing the sensor difficult



**AUTODOC experts recommend:**

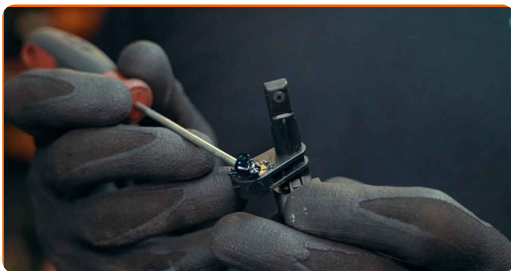
- To avoid this in the future, apply some grease to the sensor's mounting surface

**20** Clean the sensor's mounting seat

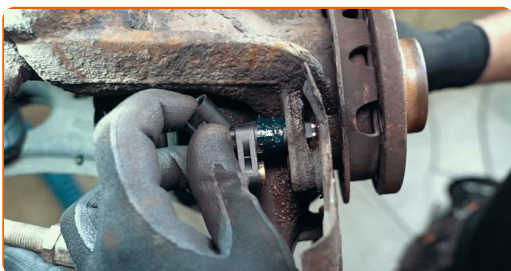




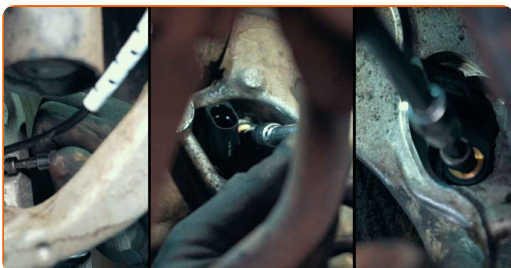
21 Then lubricate the mounting surface on the new sensor



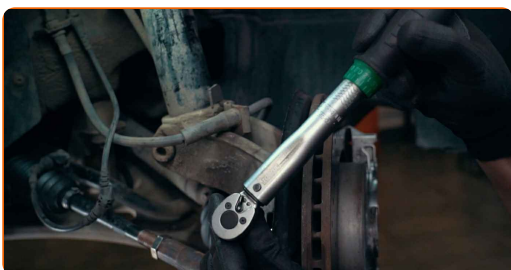
22 Install the new sensor



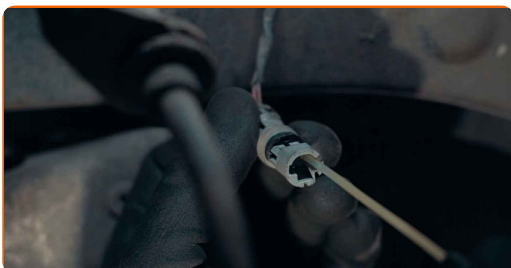
23 Screw in the ABS sensor fastener



24 Tighten the fasteners with a torque wrench to the manufacturer's recommended torque



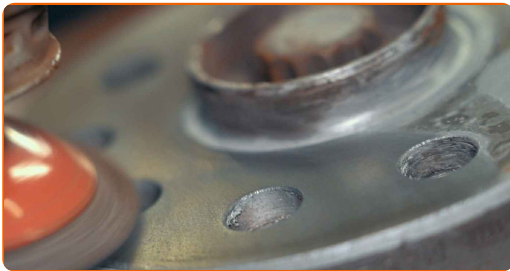
25 Treat the connectors with the electrical contact cleaner spray



**26** Attach the connector and secure the sensor wiring harness



**27** Clean the brake disc surface where it will contact the wheel rim and treat it with an anti-corrosion agent



**28** Removing sensors secured with a clip is a straightforward process. However, this fastening method is not always reliable



# AUTODOC – TOP QUALITY AND AFFORDABLE CAR PARTS ONLINE

**AUTODOC MOBILE APP: GREAT DEALS AND CONVENIENT SHOPPING**



**+ AUTODOC**

GET IT ON  
**Google Play**

 Download on the  
**App Store**

**Download**

**A GREAT SELECTION OF SPARE PARTS FOR YOUR CAR**

**ABS SENSOR: A WIDE SELECTION**

## **DISCLAIMER:**

The document contains only general recommendations that may be useful for you when you perform repair or replacement work. AUTODOC shall not be liable for any loss, injury, damage of property occurring in the repair or replacement process due to incorrect use or misinterpretation of the provided information.

AUTODOC shall not be liable for any possible mistakes and uncertainties in this guide. The information provided is for information purposes only and cannot replace advice from specialists.

AUTODOC shall not be liable for incorrect or hazardous usage of equipment, tools and car parts. AUTODOC strongly recommends to be careful and observe the safety rules when performing repair or replacement works. Remember: usage of low quality auto parts does not guarantee you the appropriate level of road safety.

© Copyright 2023 – All the contents of this website, in particular texts, photographs and graphics, are protected by copyright. All rights, including reproduction, publication, editing and translation rights, are reserved by AUTODOC SE.