



How to change fuel filter
on **MINI Convertible**
(R57) – replacement
guide

SIMILAR VIDEO TUTORIAL



This video shows the replacement procedure of a similar car part on another vehicle

Important!

This replacement procedure can be used for:

MINI Convertible (R57) 2.0 Cooper D, MINI Convertible (R57) 2.0 Cooper SD, MINI Convertible (R57) 1.6 Cooper D, MINI Convertible (R57) Cooper SD

The steps may slightly vary depending on the car design.

This tutorial was created based on the replacement procedure for a similar car part on: BMW 5 Saloon (E60) 525d 2.5

REPLACEMENT: FUEL FILTER – MINI CONVERTIBLE
(R57). TOOLS YOU NEED:



- All-purpose cleaning spray
- Drive socket # 10
- Torx bit T40
- Ratchet wrench
- Fluid container
- Flat Screwdriver

Buy tools

Replacement: fuel filter – MINI Convertible (R57). Tip from AUTODOC experts:

- Ensure adequate ventilation of the workplace. Fuel vapors are poisonous.
- Please note: all work on the car – MINI Convertible (R57) – should be done with the engine switched off.

CARRY OUT REPLACEMENT IN THE FOLLOWING ORDER:

1 Lift the car using a jack or place it over an inspection pit.

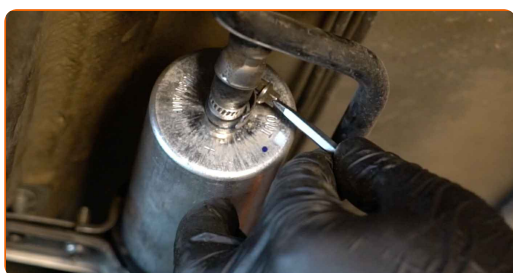
2 Prepare a container for fluids.



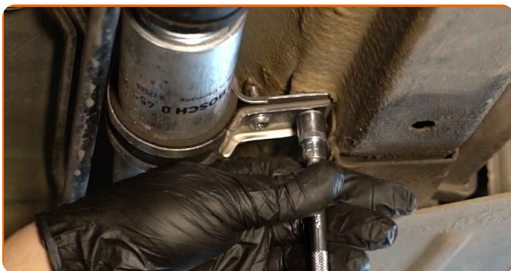
3 Remove the snap ring of the fuel pressure regulator retainer clip. Use a flat screwdriver.



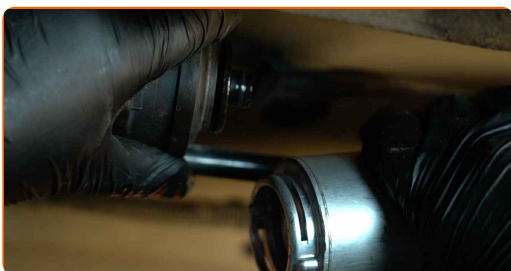
4 Loosen the fastening clamp of the fuel filter pipe. Use a flat screwdriver.



5 Loosen the fuel filter mounting. Use a drive socket #10. Use a ratchet wrench.



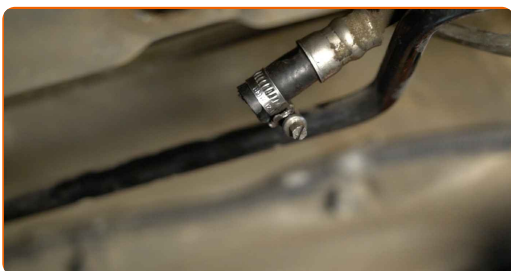
6 Detach the tubes from the fuel filter.



Replacement: fuel filter – MINI Convertible (R57). AUTODOC recommends:

- Be careful! Fuel may leak from the filter housing and hoses.

7 Remove the fuel filter. Put the old filter cartridge in the container.



8

Unscrew the fuel filter bracket fixing bolts. Use Torx T40. Use a ratchet wrench.



9

Remove the fuel filter fastening bracket.



10

Install the fuel filter fastening bracket.



11

Screw the fixing bolts of the fuel filter bracket. Use Torx T40. Use a ratchet wrench.



12

Install a new fuel filter.

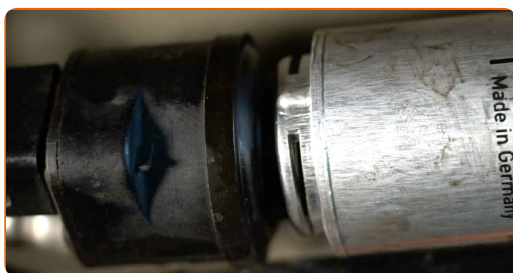


Replacement: fuel filter – MINI Convertible (R57). Tip from AUTODOC:

- Make sure that the fuel filter is positioned correctly. Consider the fuel flow direction mark.
- During installation, take care to prevent dust and dirt from getting into the fuel filter housing.
- MINI Convertible (R57) – It's important to only use high-quality filters.

13

Attach the tubes to the fuel filter.



14

Install the snap ring of the fuel pressure regulator's retainer clip.

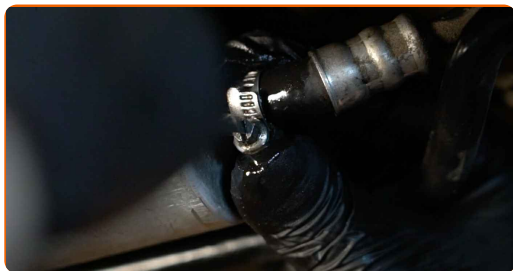


15

Screw in the fuel filter mounting bracket. Use a drive socket #10. Use a ratchet wrench.



16 Tighten the fastening clamp of the fuel filter pipe. Use a flat screwdriver.



17 Clean the fuel filter mounting bracket. Use all-purpose cleaning spray.



18 Take the fluid container away from under the fuel filter.



19 Lower the car.

Replacement: fuel filter – MINI Convertible (R57). Tip from AUTODOC experts:

- Before starting off, switch the ignition on and off several times. This should be done to activate the fuel pump to make it pump fuel through the fuel system.

20 Run the engine for a few minutes. This is necessary in order to make sure that the component operates properly.

21 Shut off the engine.

Replacement: fuel filter – MINI Convertible (R57). Tip:

- To protect the environment from pollution, be sure to dispose of the used filters at special collection points.

WELL DONE! 

[VIEW MORE TUTORIALS](#)

AUTODOC – TOP QUALITY AND AFFORDABLE CAR PARTS ONLINE

AUTODOC MOBILE APP: GREAT DEALS AND CONVENIENT SHOPPING



+ AUTODOC

GET IT ON
Google Play

 Download on the
App Store

Download

A GREAT SELECTION OF SPARE PARTS FOR YOUR CAR

FUEL FILTER: A WIDE SELECTION

DISCLAIMER:

The document contains only general recommendations that may be useful for you when you perform repair or replacement work. AUTODOC shall not be liable for any loss, injury, damage of property occurring in the repair or replacement process due to incorrect use or misinterpretation of the provided information.

AUTODOC shall not be liable for any possible mistakes and uncertainties in this guide. The information provided is for information purposes only and cannot replace advice from specialists.

AUTODOC shall not be liable for incorrect or hazardous usage of equipment, tools and car parts. AUTODOC strongly recommends to be careful and observe the safety rules when performing repair or replacement works. Remember: usage of low quality auto parts does not guarantee you the appropriate level of road safety.

© Copyright 2022 – All the contents of this website, in particular texts, photographs and graphics, are protected by copyright. All rights, including reproduction, publication, editing and translation rights, are reserved by AUTODOC GmbH.