



How to change rear
brake pads on **MINI
Convertible (R52)** –
replacement guide

SIMILAR VIDEO TUTORIAL



This video shows the replacement procedure of a similar car part on another vehicle

Important!

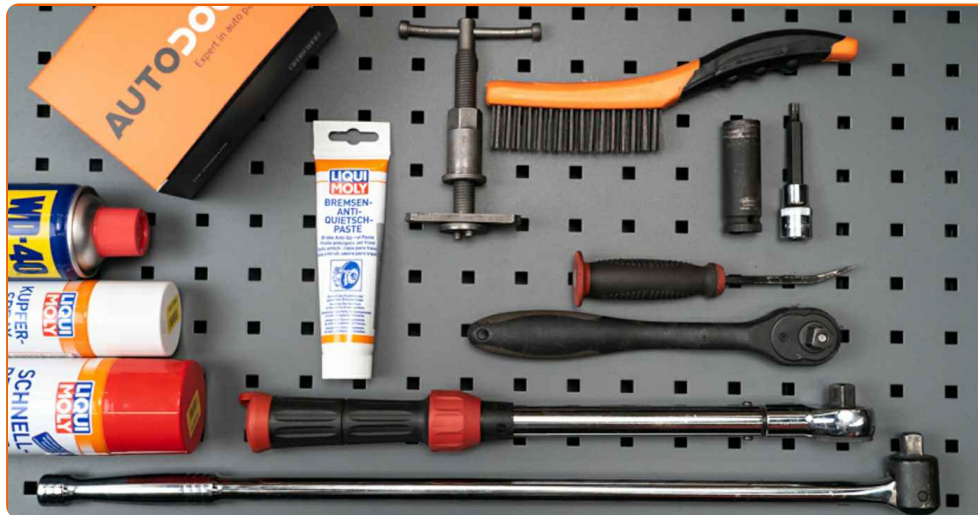
This replacement procedure can be used for:

MINI Convertible (R52) 1.6 One, MINI Convertible (R52) 1.6 Cooper, MINI Convertible (R52) 1.6 Cooper S, MINI Convertible (R52) 1.6 John Cooper Works

The steps may slightly vary depending on the car design.

This tutorial was created based on the replacement procedure for a similar car part on: MINI Hatchback (R50, R53) 1.6 Cooper

REPLACEMENT: BRAKE PADS – MINI CONVERTIBLE (R52). LIST OF THE TOOLS YOU'LL NEED:



- Wire brush
- WD-40 spray
- Brake cleaner
- Copper grease
- Anti-squeal paste
- HEX bit No.H7.
- Wheel impact socket #17
- Ratchet wrench
- Torque wrench
- Brake caliper wind back tool
- Crow bar
- Wheel chock

[Buy tools](#)

Replacement: brake pads – MINI Convertible (R52). Professionals recommend:

- Perform the replacement of brake pads in complete set for each axis. This provides effective braking.
- The replacement procedure is identical for all brake pads on the same axle.
- All work should be done with the engine stopped.

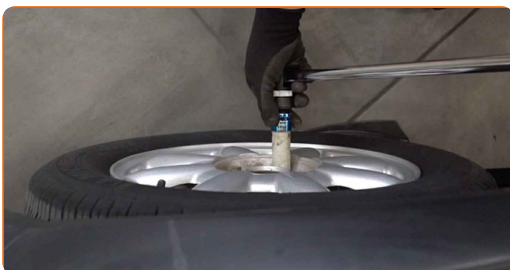
REPLACEMENT: BRAKE PADS – MINI CONVERTIBLE (R52). USE THE FOLLOWING PROCEDURE:

1 Open the bonnet. Unscrew the brake fluid reservoir cap.

2 Secure the wheels with chocks.



3 Loosen the wheel mounting bolts. Use wheel impact socket #17.



4 Raise the rear of the car and secure on supports.

5

Unscrew the wheel bolts.

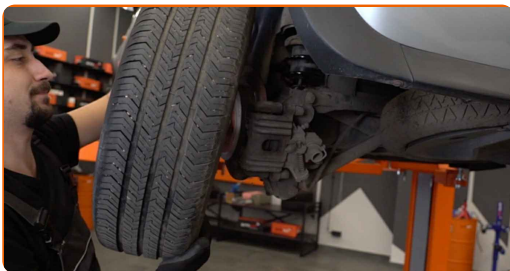


Replacement: brake pads – MINI Convertible (R52). Tip:

- To avoid injury, hold up the wheel when unscrewing the bolts.

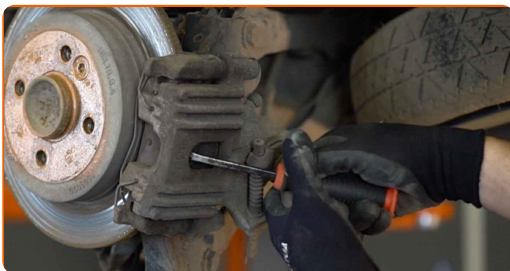
6

Remove the wheel.



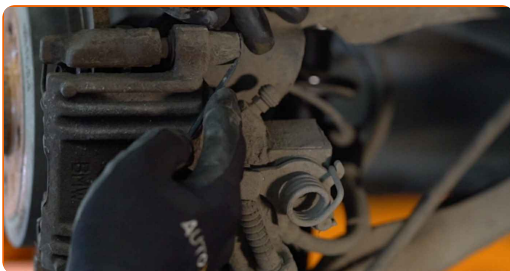
7

Spread the brake pads. Use a crowbar.



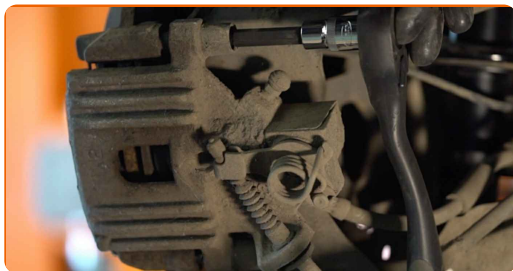
8

Remove the dust boot caps of the brake caliper guide pins.



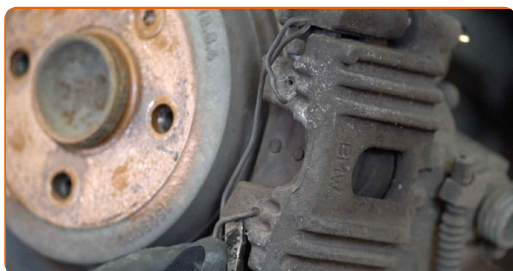
9

Unscrew the brake caliper fastening. Use HEX No.H7. Use a ratchet wrench.



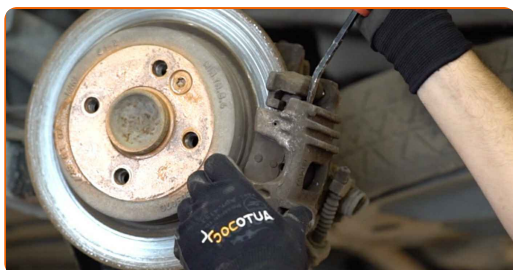
10

Detach the brake caliper retaining spring. Use a crowbar.



11

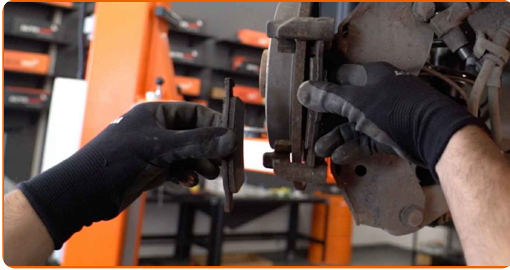
Remove the brake caliper. Use a crowbar.



Replacement: brake pads – MINI Convertible (R52). AUTODOC experts recommend:

- Tie the caliper to the suspension or to the body with a wire without disconnecting from the brake hose to prevent depressurization of the brake system.
- Make sure that the brake caliper is not hanging on the brake hose.
- Don't press the brake pedal after the brake caliper has been removed. As a result, the piston can fall out from the brake cylinder, and brake fluid leakage and depressurization of the system may occur.

12 Remove the brake pads.



Replacement: brake pads – MINI Convertible (R52). AUTODOC recommends:

- Measure the brake disc thickness. Upon reaching the wear limit the part must be replaced.

13 Check the brake caliper bracket, brake caliper guide pins and boots. Clean them. Replace, if necessary. Use a wire brush. Use a brake cleaner.



AUTODOC recommends:

- Replacement: brake pads – MINI Convertible (R52). After applying the spray, wait a few minutes.

14 Press in the brake caliper piston. Use brake caliper wind back tool.



15 Treat the back side of the new brake pads. Treat the brake caliper bracket where it contacts the brake pads. Use anti-squeal paste.

Replacement: brake pads – MINI Convertible (R52). Tip from AUTODOC:

- Make sure the disc surface is clean before installing the pads.

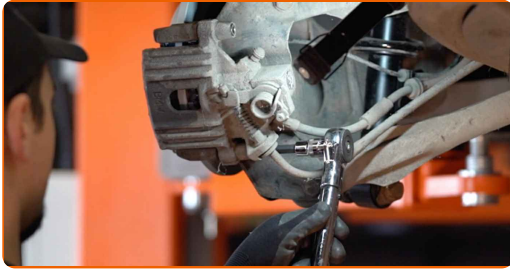
16 Install new brake pads.



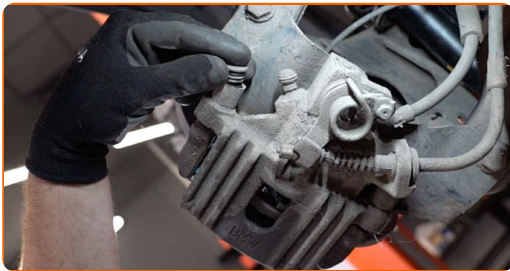
Replacement: brake pads – MINI Convertible (R52). Tip from AUTODOC experts:

- Make sure the pads are installed with linings facing the disc.

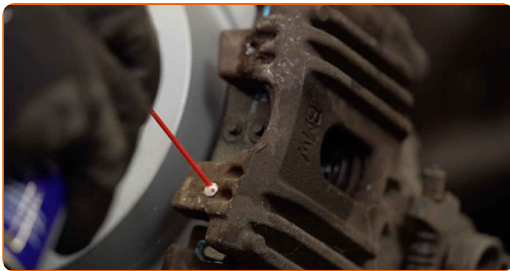
17 Install the brake caliper and fix it. Use HEX No.H7. Use a torque wrench. Tighten it to 30 Nm torque.



18 Install the dust boot caps of the brake caliper guide pins.



19 Treat the mounting seat of the brake caliper retaining spring. Use WD-40 spray.



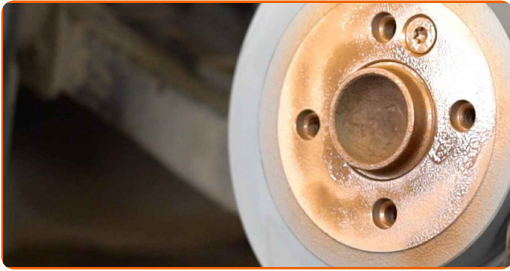
20 Install the brake caliper retaining spring.



AUTODOC recommends:

- MINI Convertible (R52) – Without starting the engine, press the brake pedal several times until it feels firm.

- 21 Clean the brake disk surface. Use a wire brush. Treat the surface where the brake disc contacts the wheel rim. Use copper grease.



- 22 Install the wheel.



Replacement: brake pads – MINI Convertible (R52). AUTODOC recommends:

- To avoid injury, hold up the wheel when screwing in the fastening bolts.

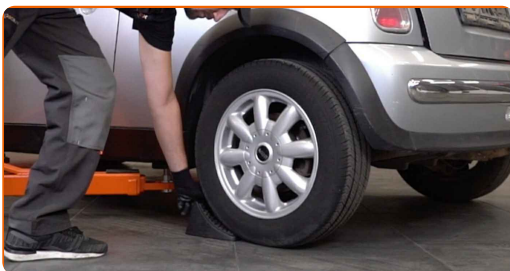
- 23 Screw in the wheel bolts. Use wheel impact socket #17.



- 24 Lower the car and working in a cross order, tighten the wheel bolts. Use a torque wrench. Tighten it to 110 Nm torque.



- 25 Remove the jacks and chocks.



Replacement: brake pads – MINI Convertible (R52). AUTODOC experts recommend:

- Check the brake fluid level in the expansion tank and refill if necessary.

- 26 Tighten the brake fluid reservoir cap. Close the hood.



Replacement: brake pads – MINI Convertible (R52). Professionals recommend:

- Slow down smoothly for first 150-200 km after the brake pads replacement. Avoid unnecessary and sharp braking to a stop.

WELL DONE! 

[VIEW MORE TUTORIALS](#)

AUTODOC – TOP QUALITY AND AFFORDABLE CAR PARTS ONLINE

AUTODOC MOBILE APP: GREAT DEALS AND CONVENIENT SHOPPING

AUTODOC

GET IT ON
Google Play

Download on the
App Store

Download

A GREAT SELECTION OF SPARE PARTS FOR YOUR CAR

BRAKE PADS: A WIDE SELECTION

(i) DISCLAIMER:

The document contains only general recommendations that may be useful for you when you perform repair or replacement work. AUTODOC shall not be liable for any loss, injury, damage of property occurring in the repair or replacement process due to incorrect use or misinterpretation of the provided information.

AUTODOC shall not be liable for any possible mistakes and uncertainties in this guide. The information provided is for information purposes only and cannot replace advice from specialists.

AUTODOC shall not be liable for incorrect or hazardous usage of equipment, tools and car parts. AUTODOC strongly recommends to be careful and observe the safety rules when performing repair or replacement works. Remember: usage of low quality auto parts does not guarantee you the appropriate level of road safety.

© Copyright 2021 – All the contents of this website, in particular texts, photographs and graphics, are protected by copyright. All rights, including reproduction, publication, editing and translation rights, are reserved by AUTODOC GmbH.