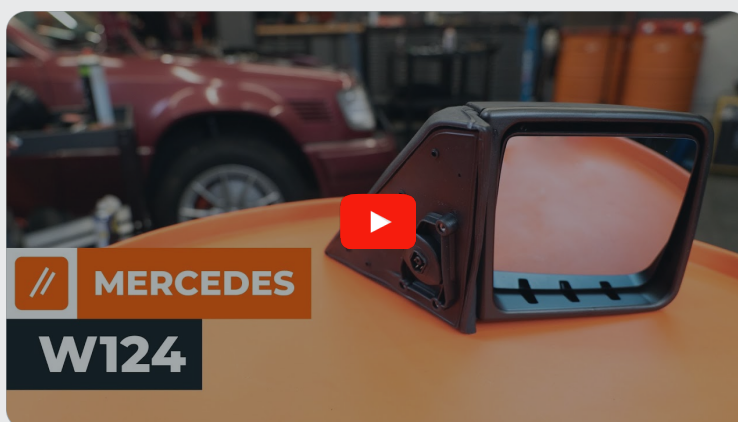




How to change wing  
mirror on **MERCEDES-  
BENZ W124 Estate (S124)**  
– replacement guide

### SIMILAR VIDEO TUTORIAL



This video shows the replacement procedure of a similar car part on another vehicle

### Important!

This replacement procedure can be used for:

MERCEDES-BENZ W124 Estate (S124) 200 2.0 (124.080), MERCEDES-BENZ W124 Estate (S124) 200 TE 2.0 (124.081), MERCEDES-BENZ W124 Estate (S124) 200 TE 2.0, MERCEDES-BENZ W124 Estate (S124) 230 TE 2.3 KAT (124.083), MERCEDES-BENZ W124 Estate (S124) 230 TE 2.3 (124.083), MERCEDES-BENZ W124 Estate (S124) 300 TE 3.0 4-matic (124.290), MERCEDES-BENZ W124 Estate (S124) 300 TE 3.0 (124.090), MERCEDES-BENZ W124 Estate (S124) 200 D 2.0 (124.180), MERCEDES-BENZ W124 Estate (S124) 250 D 2.5 (124.185), MERCEDES-BENZ W124 Estate (S124) 300 D 3.0 (124.190), MERCEDES-BENZ W124 Estate (S124) 300 Turbo diesel 3.0 4-matic (124.393), MERCEDES-BENZ W124 Estate (S124) 300 TE-24 3.0 (124.091), MERCEDES-BENZ W124 Estate (S124) 260 TE 2.6 FGST., MERCEDES-BENZ W124 Estate (S124) 260 TE FGST. 2.6, MERCEDES-BENZ W124 Estate (S124) 220 TE 2.2 (124.082), (+ 6)

The steps may slightly vary depending on the car design.

Please note that this tutorial was created based on the replacement procedure for this car part on a car with a similar design.

This tutorial was created based on the replacement procedure for a similar car part on: MERCEDES-BENZ E-Class Saloon (W124) E 250 D (124.126, 124.129)

REPLACEMENT: WING MIRROR – MERCEDES-BENZ  
W124 ESTATE (S124). LIST OF THE TOOLS YOU'LL  
NEED:



- Dielectric grease
- Plastic trim tool
- Phillips screwdriver

**Buy tools**

Replacement: wing mirror – MERCEDES-BENZ W124 Estate (S124).  
Professionals recommend:

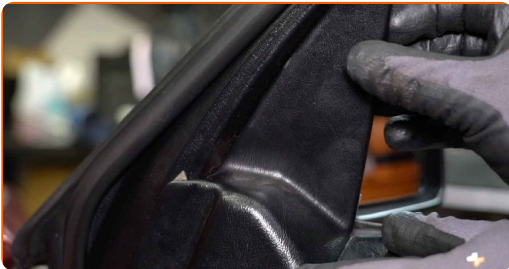
- All work should be done with the engine stopped.

## REPLACEMENT: WING MIRROR – MERCEDES-BENZ W124 ESTATE (S124). TAKE THE FOLLOWING STEPS:

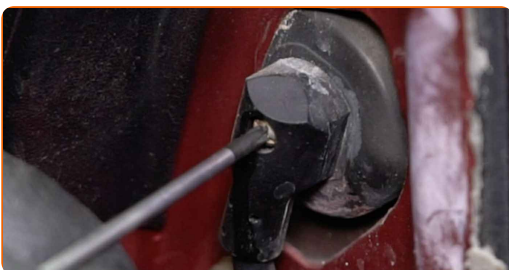
**1** Open the car door.

**2** Lower the window glass.

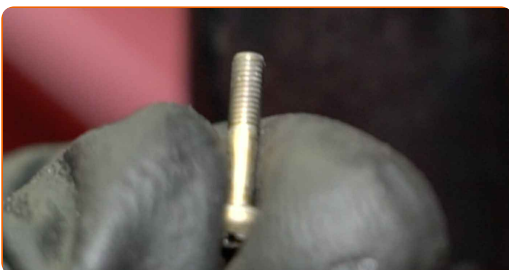
**3** Remove the trim cover that hides the wing mirror fasteners. Use a plastic trim tool.



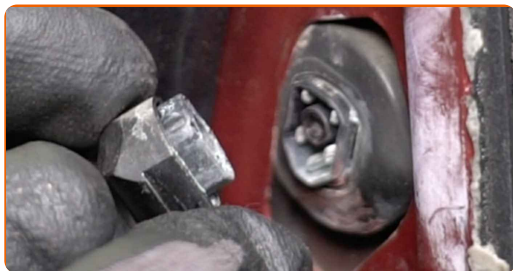
**4** Unscrew the wing mirror connector fastener. Use a Phillips screwdriver.



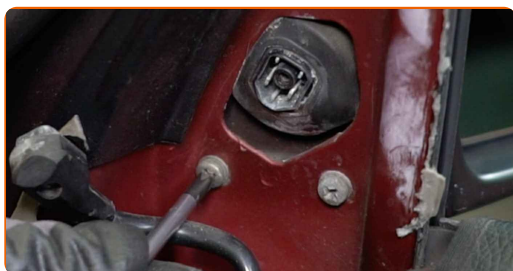
**5** Remove the fastening bolt.



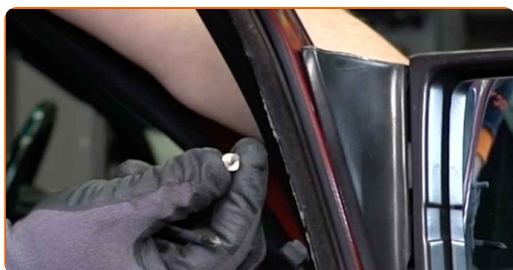
**6** Detach the wing mirror connector.



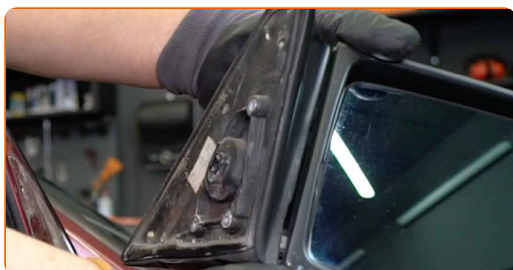
**7** Unscrew the wing mirror fasteners. Use a Phillips screwdriver.



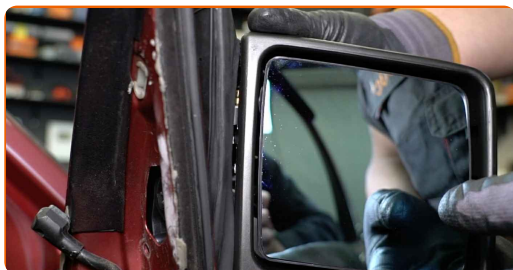
**8** Remove the fastening bolts.



**9** Remove the wing mirror.

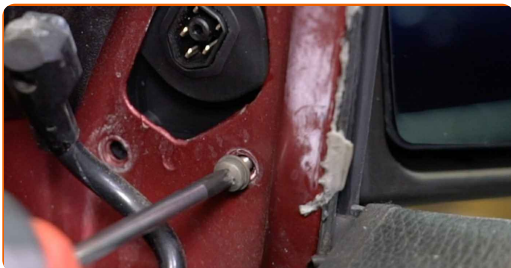


**10** Install the new wing mirror.

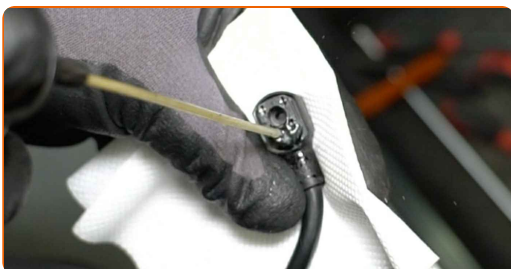


**11** Install the fastening bolts.

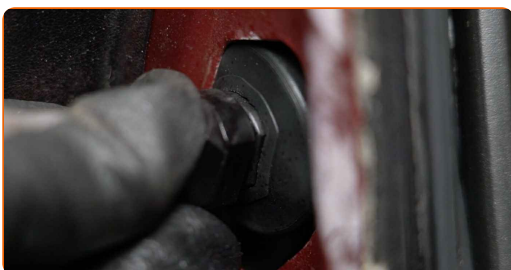
**12** Screw in the wing mirror fasteners. Use a Phillips screwdriver.



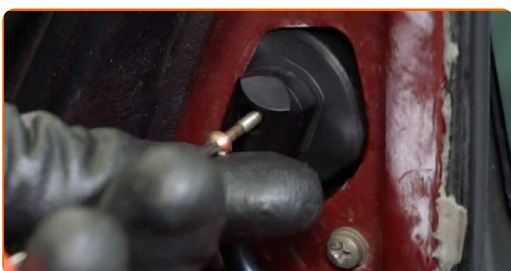
**13** Treat the wing mirror connector. Use dielectric grease.



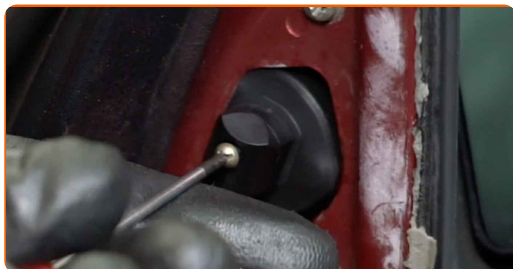
**14** Attach the wing mirror connector.



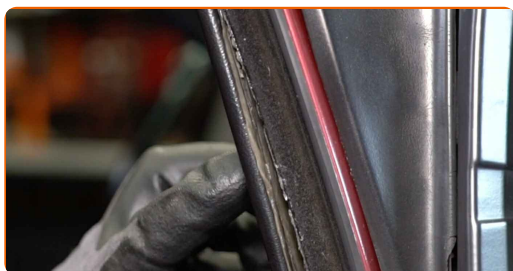
**15** Install the fastening bolt.



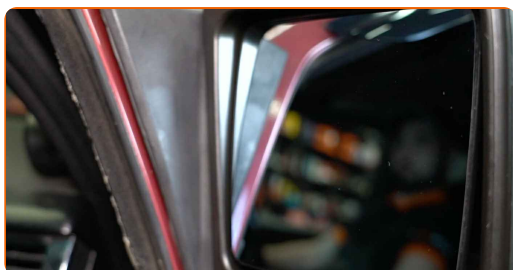
**16** Screw in the wing mirror connector fastener. Use a Phillips screwdriver.



**17** Install the wing mirror trim cover.



**18** Adjust the mirror glass.



**19** Lift the glass up fully.

**20** Close the car door.

**WELL DONE!** 

**VIEW MORE TUTORIALS**



## AUTODOC – TOP QUALITY AND AFFORDABLE CAR PARTS ONLINE

**AUTODOC MOBILE APP: GREAT DEALS AND CONVENIENT SHOPPING**



**+ AUTODOC**

GET IT ON  
**Google Play**

Download on the  
**App Store**

**Download**

**A GREAT SELECTION OF SPARE PARTS FOR YOUR CAR**

**WING MIRROR: A WIDE SELECTION**

### **i** **DISCLAIMER:**

The document contains only general recommendations that may be useful for you when you perform repair or replacement work. AUTODOC shall not be liable for any loss, injury, damage of property occurring in the repair or replacement process due to incorrect use or misinterpretation of the provided information.

AUTODOC shall not be liable for any possible mistakes and uncertainties in this guide. The information provided is for information purposes only and cannot replace advice from specialists.

AUTODOC shall not be liable for incorrect or hazardous usage of equipment, tools and car parts. AUTODOC strongly recommends to be careful and observe the safety rules when performing repair or replacement works. Remember: usage of low quality auto parts does not guarantee you the appropriate level of road safety.

© Copyright 2023 – All the contents of this website, in particular texts, photographs and graphics, are protected by copyright. All rights, including reproduction, publication, editing and translation rights, are reserved by AUTODOC SE.