



How to change pollen  
filter on **MERCEDES-  
BENZ W124 Estate (S124)**  
– replacement guide

## SIMILAR VIDEO TUTORIAL



This video shows the replacement procedure of a similar car part on another vehicle

### Important!

This replacement procedure can be used for:  
MERCEDES-BENZ W124 Estate (S124) 320 TE 3.2 (124.092)

The steps may slightly vary depending on the car design.

This tutorial was created based on the replacement procedure for a similar car part on: MERCEDES-BENZ E-Class Saloon (W124) E 250 D (124.126, 124.129)

REPLACEMENT: POLLEN FILTER – MERCEDES-BENZ  
W124 ESTATE (S124). TOOLS YOU MIGHT NEED:



- Phillips screwdriver

**Buy tools**

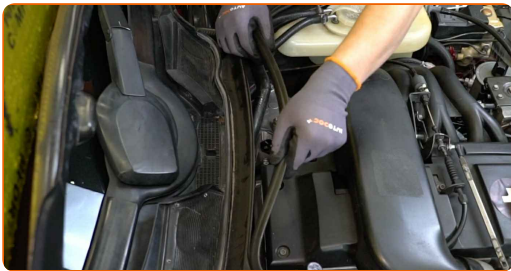
Replacement: pollen filter – MERCEDES-BENZ W124 Estate (S124). AUTODOC recommends:

- Replace the cabin filter at least once every six months, in early spring and autumn seasons.
- Follow the terms, recommendations and requirements of the part operation provided by the manufacturer.
- If the air flow into the cabin has sharply reduced, replace the filter before a scheduled maintenance.
- All work should be done with the engine stopped.

**REPLACEMENT: POLLEN FILTER – MERCEDES-BENZ W124 ESTATE (S124). TAKE THE FOLLOWING STEPS:**

**1** Open the bonnet.

**2** Remove the seal of the windscreen wiper scuttle tray.



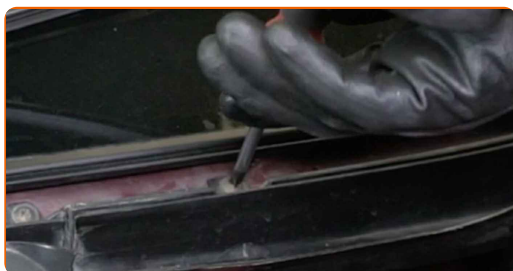
**3** Remove the central element that holds the seal of the windscreen wiper scuttle tray.



**4** Remove the windscreen rubber moulding.



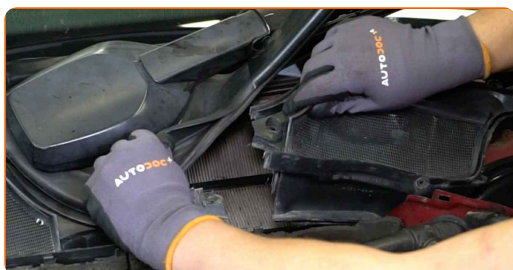
**5** Unscrew the fasteners of the drain. Use a Phillips screwdriver.



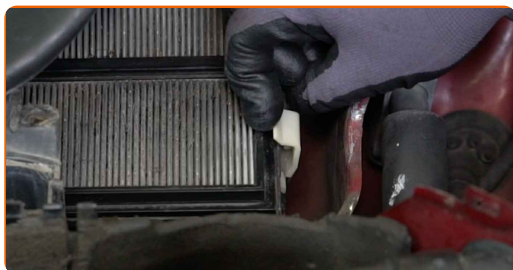
**6** Remove the side part of the drain.



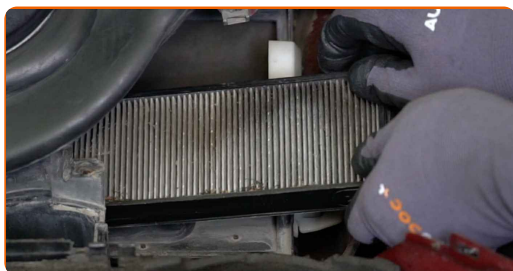
**7** Remove the central part of the drain.



**8** Press on the cabin filter retainer to release it.



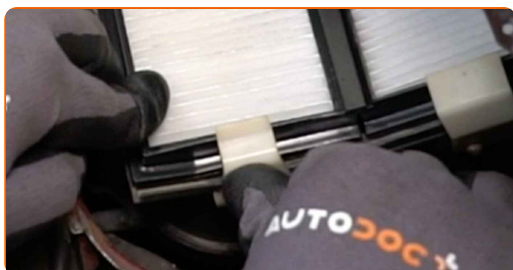
**9** Remove the cabin filters.



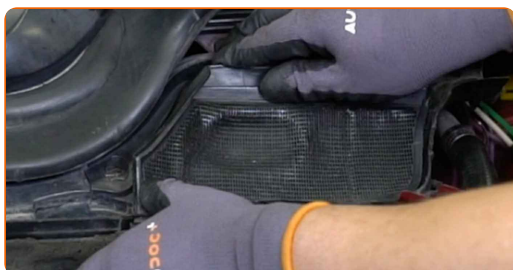
**10** Install the cabin filters.



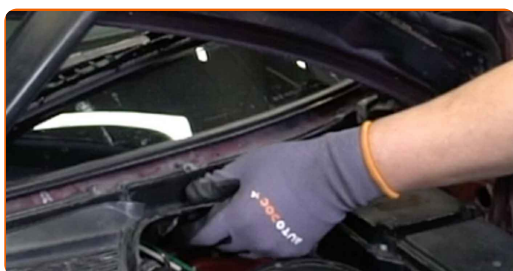
**11** Snap the cabin filter back in place.



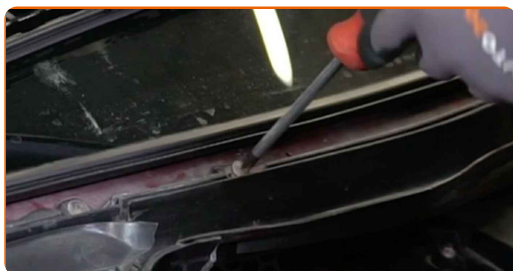
**12** Install the central part of the drain.



**13** Install the side part of the drain.



**14** Screw in the fasteners of the drain. Use a Phillips screwdriver.



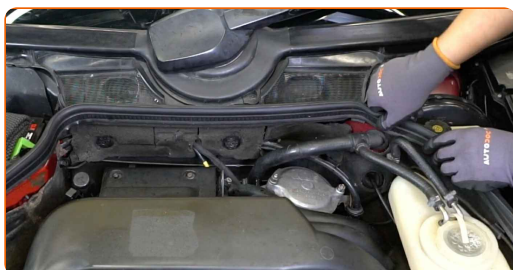
**15** Install the windscreen rubber moulding.



**16** Install the central element that holds the seal of the windscreen wiper scuttle tray.



**17** Install the seal of the windscreen wiper scuttle tray.



**18** Close the bonnet.

**19** Switch on the ignition.

**20** Switch on the air conditioning system. This is necessary in order to make sure that the component operates properly.

21

Switch off the ignition.

**WELL DONE!** 

**VIEW MORE TUTORIALS**



# AUTODOC – TOP QUALITY AND AFFORDABLE CAR PARTS ONLINE

**AUTODOC MOBILE APP: GREAT DEALS AND CONVENIENT SHOPPING**



**+ AUTODOC**

GET IT ON  
**Google Play**

Download on the  
**App Store**

**Download**

**A GREAT SELECTION OF SPARE PARTS FOR YOUR CAR**

**POLLEN FILTER: A WIDE SELECTION**

## **DISCLAIMER:**

The document contains only general recommendations that may be useful for you when you perform repair or replacement work. AUTODOC shall not be liable for any loss, injury, damage of property occurring in the repair or replacement process due to incorrect use or misinterpretation of the provided information.

AUTODOC shall not be liable for any possible mistakes and uncertainties in this guide. The information provided is for information purposes only and cannot replace advice from specialists.

AUTODOC shall not be liable for incorrect or hazardous usage of equipment, tools and car parts. AUTODOC strongly recommends to be careful and observe the safety rules when performing repair or replacement works. Remember: usage of low quality auto parts does not guarantee you the appropriate level of road safety.

© Copyright 2023 – All the contents of this website, in particular texts, photographs and graphics, are protected by copyright. All rights, including reproduction, publication, editing and translation rights, are reserved by AUTODOC SE.