



How to change rear anti
roll bar links on
MERCEDES-BENZ W124
Estate (S124) –
replacement guide

SIMILAR VIDEO TUTORIAL



This video shows the replacement procedure of a similar car part on another vehicle

Important!

This replacement procedure can be used for:

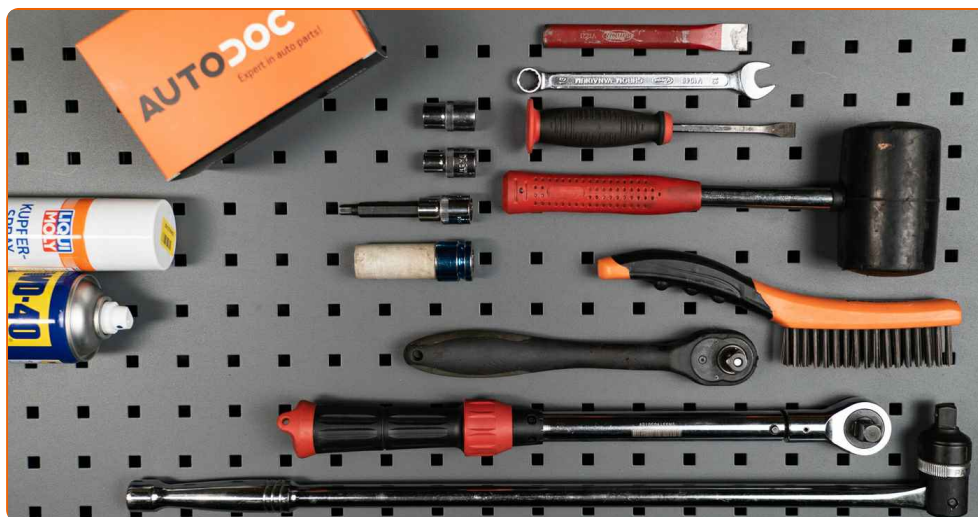
MERCEDES-BENZ W124 Estate (S124) 200 2.0 (124.080), MERCEDES-BENZ W124 Estate (S124) 200 TE 2.0 (124.081), MERCEDES-BENZ W124 Estate (S124) 200 TE 2.0, MERCEDES-BENZ W124 Estate (S124) 230 TE 2.3 KAT (124.083), MERCEDES-BENZ W124 Estate (S124) 230 TE 2.3 (124.083), MERCEDES-BENZ W124 Estate (S124) 300 TE 3.0 4-matic (124.290), MERCEDES-BENZ W124 Estate (S124) 300 TE 3.0 (124.090), MERCEDES-BENZ W124 Estate (S124) 200 D 2.0 (124.180), MERCEDES-BENZ W124 Estate (S124) 250 D 2.5 (124.185), MERCEDES-BENZ W124 Estate (S124) 300 D 3.0 (124.190), MERCEDES-BENZ W124 Estate (S124) 300 Turbo diesel 3.0 4-matic (124.393), MERCEDES-BENZ W124 Estate (S124) 300 TE-24 3.0 (124.091), MERCEDES-BENZ W124 Estate (S124) 260 TE 2.6 FGST., MERCEDES-BENZ W124 Estate (S124) 260 TE FGST. 2.6, MERCEDES-BENZ W124 Estate (S124) 220 TE 2.2 (124.082), (+ 7)

The steps may slightly vary depending on the car design.

Please note that this tutorial was created based on the replacement procedure for this car part on a car with a similar design.

This tutorial was created based on the replacement procedure for a similar car part on: MERCEDES-BENZ E-Class Saloon (W210) E 430 (210.070)

REPLACEMENT: ANTI ROLL BAR LINKS – MERCEDES-BENZ W124 ESTATE (S124). LIST OF THE TOOLS YOU'LL NEED:



- Wire brush
- WD-40 spray
- Copper grease
- Drive socket # 10
- Drive socket # 13
- Drive socket # 17
- Combination spanner #13
- Combination spanner #17
- Combination spanner #19
- Wheel impact socket #17
- Ratchet wrench
- Torque wrench
- Flat chisel
- Crow bar
- Rubber mallet
- Wheel chock

Buy tools

Replacement: anti roll bar links – MERCEDES-BENZ W124 Estate (S124). Tip from AUTODOC experts:

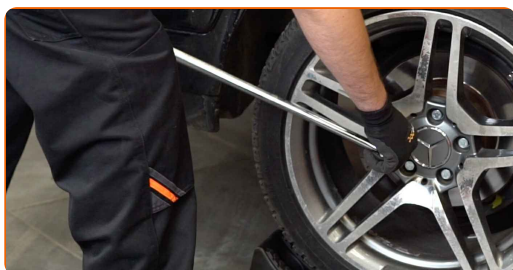
- Replace the stabiliser links on MERCEDES-BENZ W124 Estate (S124) in pairs.
- The replacement procedure is identical for both stabiliser links on the same axle.
- All work should be done with the engine stopped.

CARRY OUT REPLACEMENT IN THE FOLLOWING ORDER:

1 Secure the wheels with chocks.

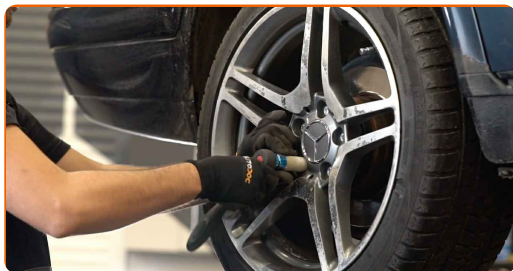


2 Loosen the wheel mounting bolts. Use wheel impact socket #17.



3 Raise the rear of the car and secure on supports.

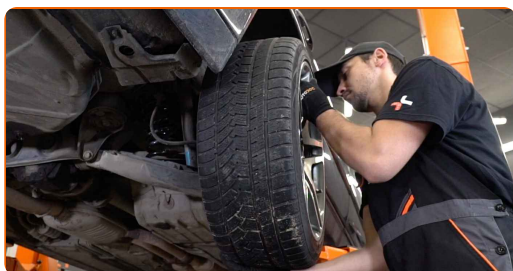
4 Unscrew the wheel bolts.



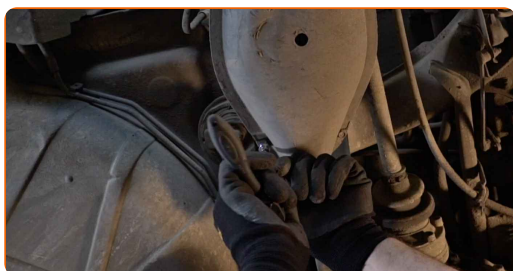
Replacement: anti roll bar links – MERCEDES-BENZ W124 Estate (S124). Tip from AUTODOC:

- To avoid injury, hold up the wheel when unscrewing the bolts.

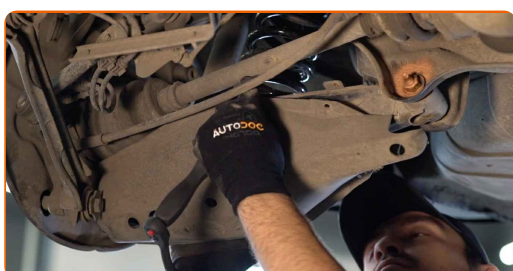
5 Remove the wheel.



6 Unscrew the fasteners of the control arm plastic cover. Use a drive socket #10. Use a ratchet wrench.

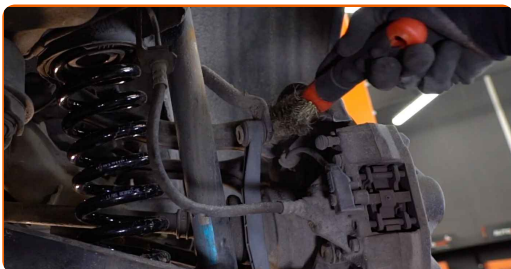


7 Remove the control arm plastic cover.



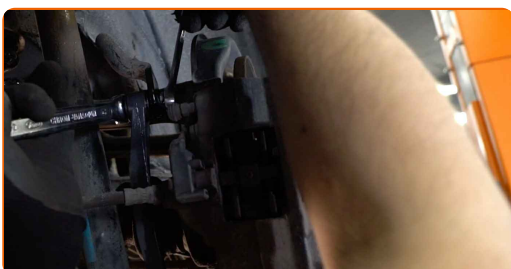
8

Clean the stabiliser link fasteners. Use a wire brush. Use WD-40 spray.



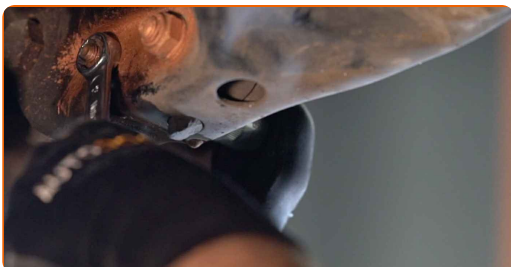
9

Disconnect the transverse stabilizer fastener from the link. Use a combination spanner #17. Use a combination spanner #19.



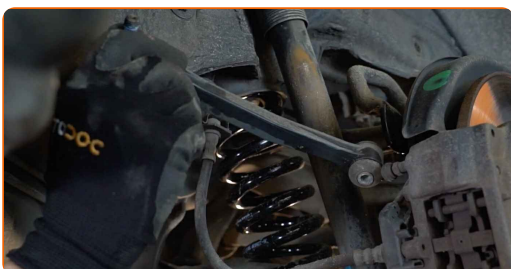
10

Unscrew the fastener connecting the stabilizer link to the stabilizer bar. Use a combination spanner #13 (2 pieces).



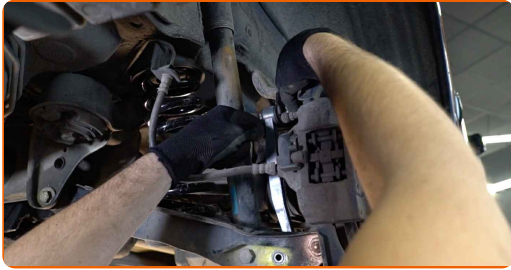
11

Remove the stabilizer rod.



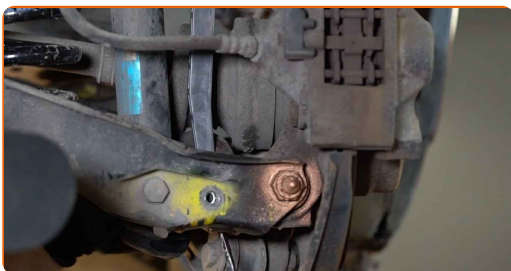
12

Install a new rod, tighten the fasteners. Use a crowbar.



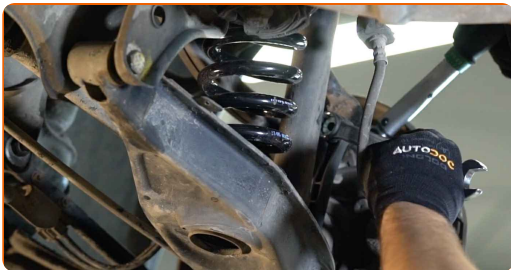
13

Align the fastener holes of the stabilizer link and the suspension control arm. Use a pin punch. Use a rubber mallet.



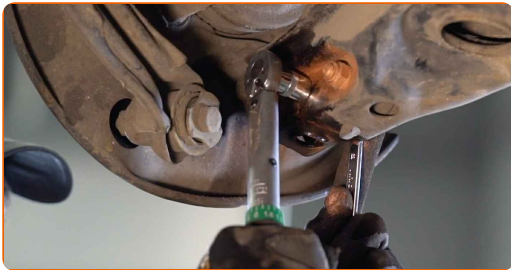
14

Tighten the fastener connecting the stabilizer link to the stabilizer bar. Use a combination spanner #13. Use a drive socket #13. Use a torque wrench. Tighten it to 30 Nm torque.

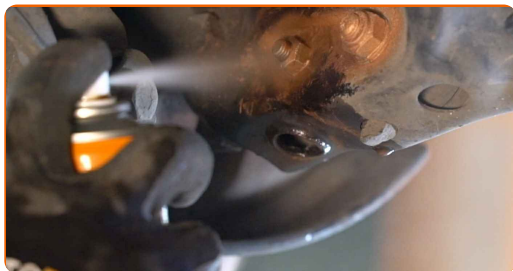


15

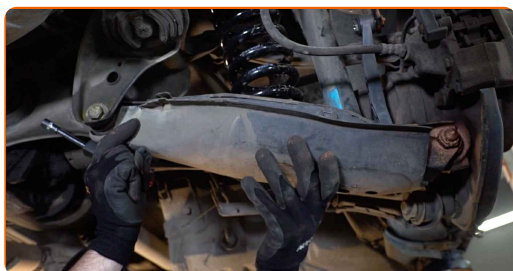
Tighten the stabiliser link fastener. Use a combination spanner #17. Use a combination spanner #19. Use a drive socket #17. Use a torque wrench. Tighten it to 35 Nm torque.



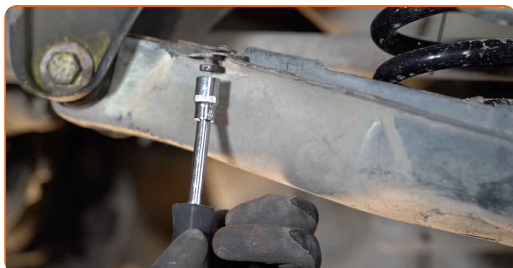
16 Treat all joints of the stabiliser link. Use copper grease.



17 Install the control arm plastic cover.



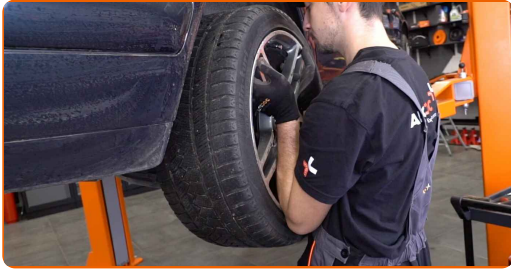
18 Screw the fasteners of the control arm plastic cover. Use a drive socket #10. Use a ratchet wrench.



19 Clean the wheel rim mounting seat. Use a wire brush. Treat the contacting surface. Use copper grease.



20 Install the wheel.



AUTODOC recommends:

- Important! Hold the wheel while screwing in the fastening bolts. MERCEDES-BENZ W124 Estate (S124)

21 Screw in the wheel bolts. Use wheel impact socket #17.

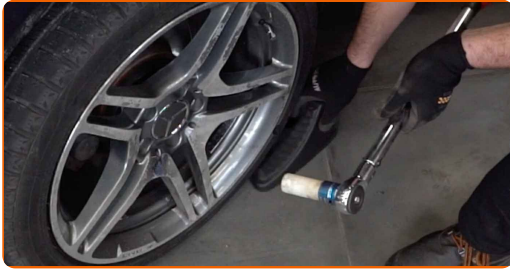


22 Lower the car and working in a cross order, tighten the wheel bolts. Use a torque wrench. Tighten it to 112 Nm torque.



23

Remove the jacks and chocks.



WELL DONE! 

[VIEW MORE TUTORIALS](#)

AUTODOC – TOP QUALITY AND AFFORDABLE CAR PARTS ONLINE

AUTODOC MOBILE APP: GREAT DEALS AND CONVENIENT SHOPPING



+ AUTODOC

GET IT ON
Google Play

Download on the
App Store

Download

A GREAT SELECTION OF SPARE PARTS FOR YOUR CAR

ANTI ROLL BAR LINKS: A WIDE SELECTION

DISCLAIMER:

The document contains only general recommendations that may be useful for you when you perform repair or replacement work. AUTODOC shall not be liable for any loss, injury, damage of property occurring in the repair or replacement process due to incorrect use or misinterpretation of the provided information.

AUTODOC shall not be liable for any possible mistakes and uncertainties in this guide. The information provided is for information purposes only and cannot replace advice from specialists.

AUTODOC shall not be liable for incorrect or hazardous usage of equipment, tools and car parts. AUTODOC strongly recommends to be careful and observe the safety rules when performing repair or replacement works. Remember: usage of low quality auto parts does not guarantee you the appropriate level of road safety.

© Copyright 2023 – All the contents of this website, in particular texts, photographs and graphics, are protected by copyright. All rights, including reproduction, publication, editing and translation rights, are reserved by AUTODOC SE.