



How to change front
wiper motor on
MERCEDES-BENZ W124
Coupe (C124) –
replacement guide

SIMILAR VIDEO TUTORIAL



This video shows the replacement procedure of a similar car part on another vehicle

ⓘ Important!

This replacement procedure can be used for:

MERCEDES-BENZ W124 Coupe (C124) 230 CE 2.3 (124.043), MERCEDES-BENZ W124 Coupe (C124) 300 CE 3.0, MERCEDES-BENZ W124 Coupe (C124) 300 CE-24 3.0 (124.051), MERCEDES-BENZ W124 Coupe (C124) 230 CE 2.3 KAT (124.043), MERCEDES-BENZ W124 Coupe (C124) 300 CE 3.0 (124.050), MERCEDES-BENZ W124 Coupe (C124) 320 CE 3.2 (124.052), MERCEDES-BENZ W124 Coupe (C124) 220 CE 2.2 (124.042), MERCEDES-BENZ W124 Coupe (C124) 200 CE (124.040), MERCEDES-BENZ W124 Coupe (C124) 200 CE (124.041)

The steps may slightly vary depending on the car design.

This tutorial was created based on the replacement procedure for a similar car part on: MERCEDES-BENZ E-Class Saloon (W124) E 250 D (124.126, 124.129)

REPLACEMENT: WIPER MOTOR – MERCEDES-BENZ W124 COUPE (C124). TOOLS YOU MIGHT NEED:



- Wire brush
- WD-40 spray
- All-purpose cleaning spray
- Dielectric grease
- Torque wrench
- Drive socket # 10
- Drive socket # 13
- Ratchet wrench
- Ruler
- Phillips screwdriver
- Microfibre towel
- Fender cover

Buy tools

Replacement: wiper motor – MERCEDES-BENZ W124 Coupe (C124).
AUTODOC experts recommend:

- All work should be done with the engine stopped.

REPLACEMENT: WIPER MOTOR – MERCEDES-BENZ W124 COUPE (C124). USE THE FOLLOWING PROCEDURE:

1 Open the bonnet.

2 Use a fender protection cover to prevent damaging paintwork and plastic parts of the car.

3 Remove the seal of the windscreen wiper scuttle tray.



4 Remove the central element that holds the seal of the windscreen wiper scuttle tray.



5 Remove the windscreen rubber moulding.



6 Unscrew the fasteners of the drain. Use a Phillips screwdriver.



7 Dismantle the side drains.



8 Remove the central part of the drain.



9 Cover the cabin filter with a microfibre cloth to prevent dirt and foreign objects from getting in.



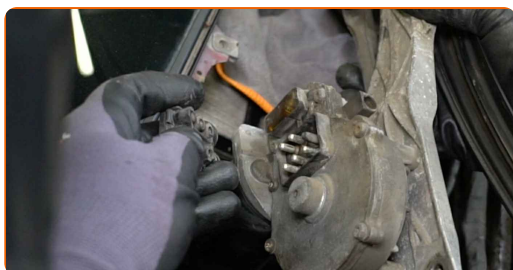
10 Clean the windscreen wiper mechanism fasteners. Use a wire brush. Use WD-40 spray.



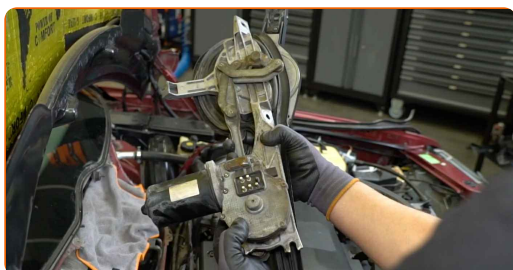
11 Unscrew the windscreen wiper mechanism fasteners. Use a drive socket #10. Use a ratchet wrench.



12 Unplug the wiper motor connector.



13 Dismantle the windscreen wiper mechanism.



14

Draw a mark indicating the wiper linkage installation angle. Use a ruler.



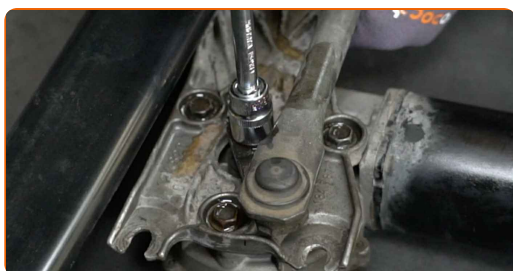
15

Clean the wiper motor fasteners. Use a wire brush. Use WD-40 spray.



16

Unscrew the fastener connecting the linkage to the wiper motor shaft. Use a drive socket #13. Use a ratchet wrench.

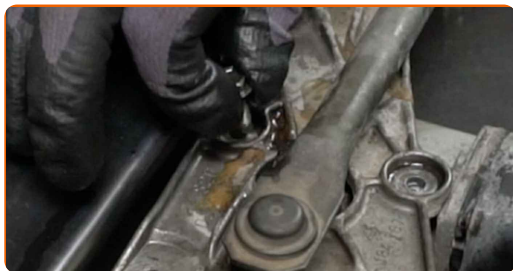


17

Unscrew the wiper motor fasteners. Use a drive socket #10. Use a ratchet wrench.



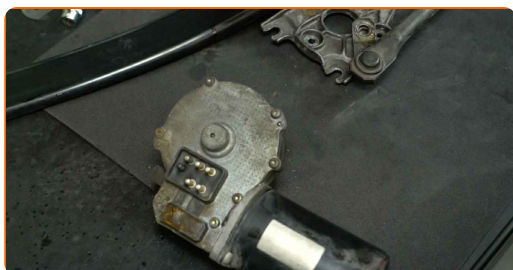
18 Remove the fastening bolts.



19 Detach the wiper linkage from the motor shaft.



20 Dismantle the wiper motor.



21 Clean the wiper motor mounting seat. Use a wire brush. Use all-purpose cleaning spray.



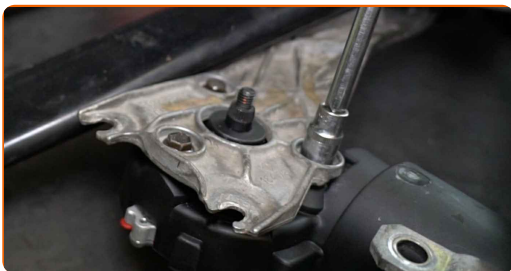
22 Install a new wiper motor.



23 Install the fastening bolts.



24 Tighten the wiper motor fasteners. Use a drive socket #10. Use a torque wrench. Tighten it to 13 Nm torque.



25 Install the wiper linkage on the motor shaft. Use a ruler.



Replacement: wiper motor – MERCEDES-BENZ W124 Coupe (C124).
Professionals recommend:

- Align the wiper linkage with the mark you made previously to install it correctly in relation to the wiper motor shaft.

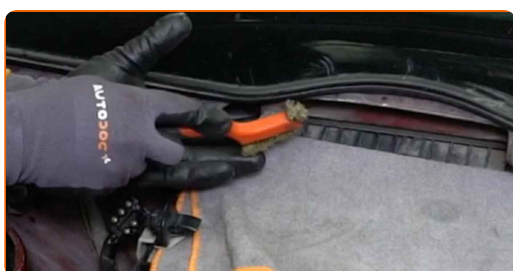
- 26 Tighten the fastener connecting the linkage to the wiper motor shaft. Use a drive socket #13. Use a torque wrench. Tighten it to 21 Nm torque.



- 27 Clean the wiper motor connector. Use dielectric grease.



- 28 Clean the mounting seat of the windscreen wiper mechanism. Use a wire brush. Use all-purpose cleaning spray.



- 29 Install the windscreen wiper mechanism.



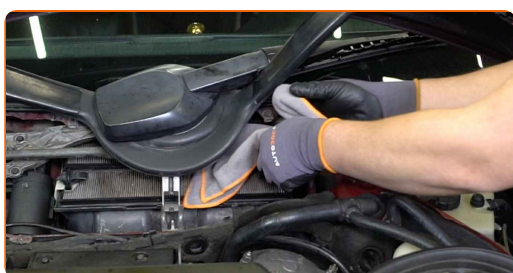
30 Attach the connector to the wiper motor.



31 Tighten the windscreen wiper mechanism fasteners. Use a drive socket #10. Use a torque wrench. Tighten it to 13 Nm torque.



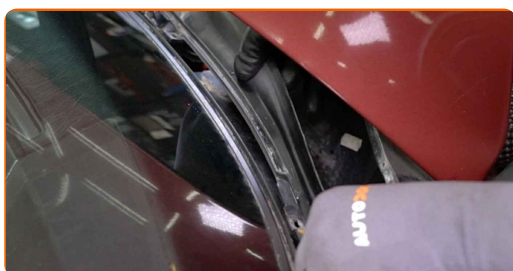
32 Remove the microfibre cloth from the cabin filter.



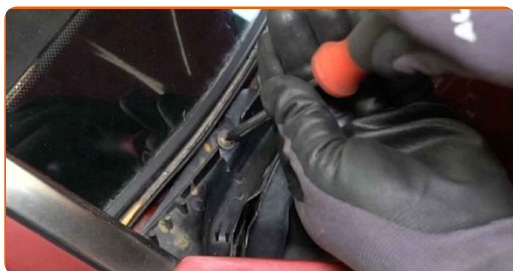
33 Install the central part of the drain.



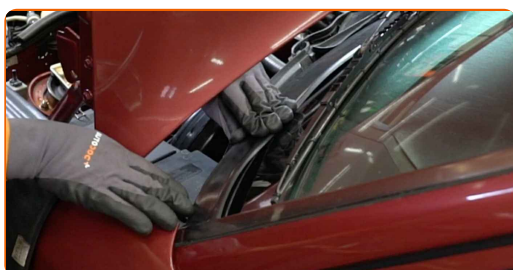
34 Install the side drains.



35 Screw in the fasteners of the drain. Use a Phillips screwdriver.



36 Install the windscreen rubber moulding.



37 Install the central element that holds the seal of the windscreen wiper scuttle tray.



38 Install the seal of the windscreen wiper scuttle tray.



39 Remove the fender protection cover.

40 Close the hood.

41

Switch on the ignition. This is necessary in order to make sure that the component operates properly.

42

Switch off the ignition.

WELL DONE! 

VIEW MORE TUTORIALS

AUTODOC – TOP QUALITY AND AFFORDABLE CAR PARTS ONLINE

AUTODOC MOBILE APP: GREAT DEALS AND CONVENIENT SHOPPING



+ AUTODOC

GET IT ON
Google Play

Download on the
App Store

Download

A GREAT SELECTION OF SPARE PARTS FOR YOUR CAR

WIPER MOTOR: A WIDE SELECTION

(i) DISCLAIMER:

The document contains only general recommendations that may be useful for you when you perform repair or replacement work. AUTODOC shall not be liable for any loss, injury, damage of property occurring in the repair or replacement process due to incorrect use or misinterpretation of the provided information.

AUTODOC shall not be liable for any possible mistakes and uncertainties in this guide. The information provided is for information purposes only and cannot replace advice from specialists.

AUTODOC shall not be liable for incorrect or hazardous usage of equipment, tools and car parts. AUTODOC strongly recommends to be careful and observe the safety rules when performing repair or replacement works. Remember: usage of low quality auto parts does not guarantee you the appropriate level of road safety.

© Copyright 2023 – All the contents of this website, in particular texts, photographs and graphics, are protected by copyright. All rights, including reproduction, publication, editing and translation rights, are reserved by AUTODOC SE.