



How to change
handbrake shoe on
MERCEDES-BENZ W124
Coupe (C124) –
replacement guide

SIMILAR VIDEO TUTORIAL



This video shows the replacement procedure of a similar car part on another vehicle

Important!

This replacement procedure can be used for:

MERCEDES-BENZ W124 Coupe (C124) 230 CE 2.3 (124.043), MERCEDES-BENZ W124 Coupe (C124) 300 CE 3.0, MERCEDES-BENZ W124 Coupe (C124) 300 CE-24 3.0 (124.051), MERCEDES-BENZ W124 Coupe (C124) 230 CE 2.3 KAT (124.043), MERCEDES-BENZ W124 Coupe (C124) 300 CE 3.0 (124.050), MERCEDES-BENZ W124 Coupe (C124) 320 CE 3.2 (124.052), MERCEDES-BENZ W124 Coupe (C124) 220 CE 2.2 (124.042)

The steps may slightly vary depending on the car design.

This tutorial was created based on the replacement procedure for a similar car part on: MERCEDES-BENZ E-Class Saloon (W124) E 250 D (124.126, 124.129)

**REPLACEMENT: HANDBRAKE SHOE – MERCEDES-BENZ
W124 COUPE (C124). TOOLS YOU'LL NEED:**



- Wire brush
- WD-40 spray
- Brake cleaner
- All-purpose cleaning spray
- Ceramic grease
- Torque wrench
- Combination spanner #17
- Drive socket # 13
- Drive socket # 17
- HEX bit No.H5
- Wheel impact socket #17
- Ratchet wrench
- Flat Screwdriver
- Pin punch
- Hammer
- Tap wrench
- Long nose pliers
- Crow bar
- Wheel chock

Buy tools

Replacement: handbrake shoe – MERCEDES-BENZ W124 Coupe (C124). Tip from AUTODOC experts:

- All work should be done with the engine stopped.

REPLACEMENT: HANDBRAKE SHOE – MERCEDES-BENZ W124 COUPE (C124). RECOMMENDED SEQUENCE OF STEPS:

1 Open the bonnet.

2 Unscrew the brake fluid reservoir cap.



3 Secure the wheels with chocks.

4 Loosen the wheel bolts. Use wheel impact socket #17. Use a tap wrench.



5 Raise the car.

AUTODOC recommends:

- If you are using a jack, make sure it rests on a flat surface without any unevenness.
- Be sure to additionally secure the car with jack stands.

6

Unscrew the wheel bolts.



Replacement: handbrake shoe – MERCEDES-BENZ W124 Coupe (C124).
AUTODOC recommends:

- To avoid injury, hold up the wheel when unscrewing the bolts.

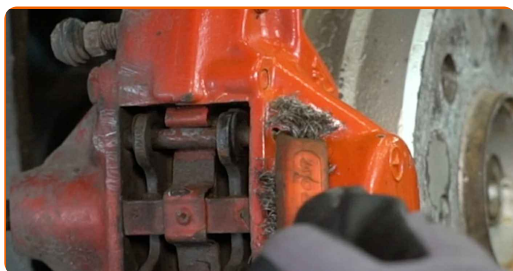
7

Remove the wheel.



8

Clean the brake pad guide pins. Use a wire brush. Use all-purpose cleaning spray.



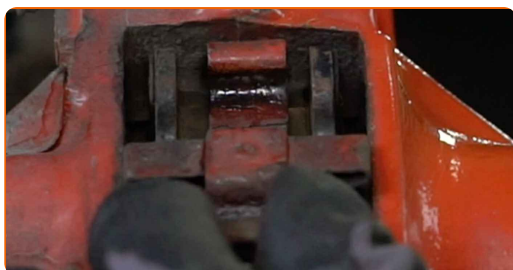
9

Remove the brake pad guide pins. Use a pin punch. Use a hammer.



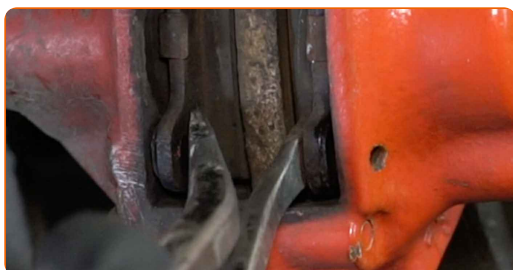
10

Remove the retaining spring of the brake pads.



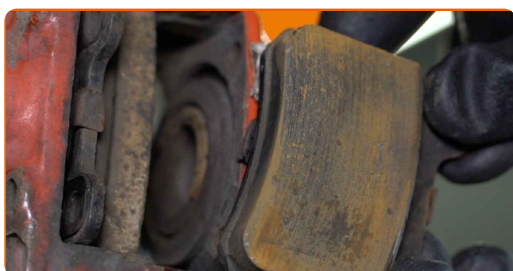
11

Spread the brake pads. Use a crowbar (2 pieces).



12

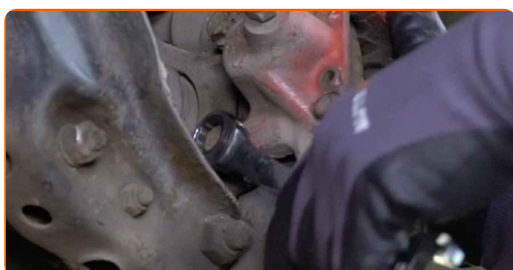
Remove the brake pads.



13 Clean the brake caliper fasteners. Use a wire brush. Use WD-40 spray.



14 Unscrew the brake caliper fasteners. Use a combination spanner #17.



15 Remove the fastening bolts.



16 Remove the brake caliper.



Replacement: handbrake shoe – MERCEDES-BENZ W124 Coupe (C124). Tip:

- Tie the caliper to the suspension or to the body with a wire without disconnecting from the brake hose to prevent depressurization of the brake system.
- Make sure that the brake caliper is not hanging on the brake hose.
- Don't press the brake pedal after the brake caliper has been removed. As a result, the piston can fall out from the brake cylinder, and brake fluid leakage and depressurization of the system may occur.

17

Clean the brake disc fastener. Use a wire brush. Use WD-40 spray.



18

Unscrew the brake disc fasteners. Use HEX No.H5. Use a ratchet wrench.



19 Remove the fastening bolt.



20 Release the parking brake adjuster. Use a flat screwdriver.



21 Remove the brake disc.



22 Remove the lower brake shoe return spring. Use a flat screwdriver.



23 Remove the hold-down springs of the parking brake shoes. Use long nose pliers.



24 Remove the parking brake shoes.



25 Clean the mounting seats of the parking brake shoes. Use a wire brush. Use all-purpose cleaning spray.



26 Remove the parking brake adjuster.



27 Clean the parking brake adjuster. Use a wire brush. Use all-purpose cleaning spray.



28 Remove the upper return spring.

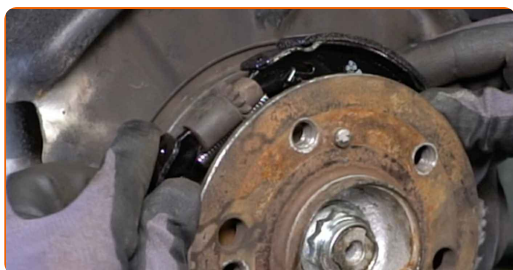
29 Install the upper return spring.



30 Install the parking brake adjuster.



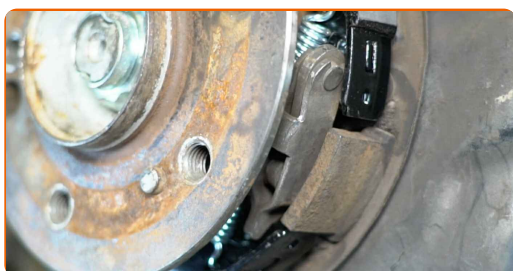
31 Install new parking brake shoes.



32 Install the hold-down springs of the parking brake shoes. Use long nose pliers.



33 Install the lower return spring. Use a flat screwdriver.



34 Clean the wheel hub. Use a wire brush.



35 Treat the contacting surface. Use ceramic grease.



36 Install the brake disc.



37 Install the fastening bolt.



38 Tighten the brake disc fasteners. Use HEX No.H5. Use a torque wrench. Tighten it to 10 Nm torque.



39 Set the parking brake adjuster in the correct position. Use a flat screwdriver.



40 Install the brake caliper and fasten it.



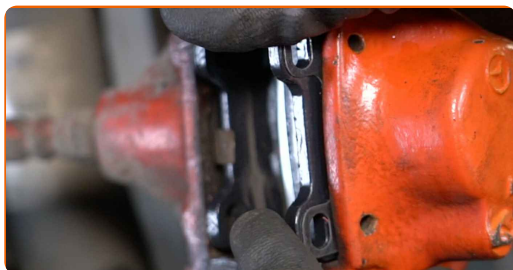
41 Install the fastening bolts.



42 Tighten the brake caliper fasteners. Use a drive socket #17. Use a torque wrench. Tighten it to 65 Nm torque.



43 Install the brake pads.



44 Install the retaining spring of the brake pads.



45 Install the brake pad guide pins. Use a pin punch. Use a hammer.



46 Clean the brake disk surface. Use a brake cleaner.



47 Treat the surface where the brake disc contacts the wheel rim. Use ceramic grease.



48 Install the wheel.



AUTODOC recommends:

- Important! Hold the wheel while screwing in the fastening bolts. MERCEDES-BENZ W124 Coupe (C124)

49

Screw in the wheel bolts. Use wheel impact socket #17. Use a ratchet wrench.



50

Lower the car and working in a cross order, tighten the wheel bolts. Use wheel impact socket #17. Use a torque wrench. Tighten it to 110 Nm torque.



51

Remove the jacks and chocks.



AUTODOC recommends:

- MERCEDES-BENZ W124 Coupe (C124) – Press the brake pedal several times with the engine shut down until you feel the resistance built up.
- Check the brake fluid level in the expansion tank and top up if necessary.

52

Tighten the brake fluid reservoir cap.



53

Close the bonnet.

WELL DONE! [VIEW MORE TUTORIALS](#)

AUTODOC – TOP QUALITY AND AFFORDABLE CAR PARTS ONLINE

AUTODOC MOBILE APP: GREAT DEALS AND CONVENIENT SHOPPING



+ AUTODOC

GET IT ON
Google Play

 Download on the
App Store

Download

A GREAT SELECTION OF SPARE PARTS FOR YOUR CAR

HANDBRAKE SHOE: A WIDE SELECTION

DISCLAIMER:

The document contains only general recommendations that may be useful for you when you perform repair or replacement work. AUTODOC shall not be liable for any loss, injury, damage of property occurring in the repair or replacement process due to incorrect use or misinterpretation of the provided information.

AUTODOC shall not be liable for any possible mistakes and uncertainties in this guide. The information provided is for information purposes only and cannot replace advice from specialists.

AUTODOC shall not be liable for incorrect or hazardous usage of equipment, tools and car parts. AUTODOC strongly recommends to be careful and observe the safety rules when performing repair or replacement works. Remember: usage of low quality auto parts does not guarantee you the appropriate level of road safety.

© Copyright 2023 – All the contents of this website, in particular texts, photographs and graphics, are protected by copyright. All rights, including reproduction, publication, editing and translation rights, are reserved by AUTODOC SE.