



How to change ignition  
leads on **MERCEDES-  
BENZ W123 Coupe (C123)**  
– replacement guide

## SIMILAR VIDEO TUTORIAL



This video shows the replacement procedure of a similar car part on another vehicle

### Important!

This replacement procedure can be used for:  
MERCEDES-BENZ W123 Coupe (C123) 230 CE 2.3 (123.243)

The steps may slightly vary depending on the car design.

This tutorial was created based on the replacement procedure for a similar car part on: MERCEDES-BENZ 190 (W201) 2.0 (201.023)

REPLACEMENT: IGNITION LEADS – MERCEDES-BENZ  
W123 COUPE (C123). TOOLS YOU MIGHT NEED:



- Wire brush
- High-temperature anti-seize lubricant
- Dielectric grease
- Torque wrench
- Combination spanner #10
- Drive socket # 10
- Spark plug socket # 16
- Ratchet wrench
- Phillips screwdriver
- Crow bar
- Fender cover

**Buy tools**

Replacement: ignition leads – MERCEDES-BENZ W123 Coupe (C123).  
AUTODOC recommends:

- Warning! Shut down the engine before starting any work – MERCEDES-BENZ W123 Coupe (C123).

## CARRY OUT REPLACEMENT IN THE FOLLOWING ORDER:

**1** Open the bonnet.

**2** Use a fender protection cover to prevent damaging paintwork and plastic parts of the car.

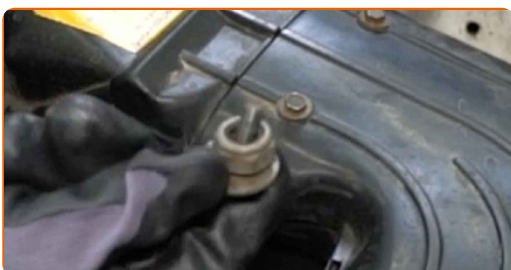
**3** Disconnect the earth cable terminal from the battery. Use a combination spanner #10.



**4** Unscrew the inlet pipe fasteners. Use a Phillips screwdriver. Use a drive socket #10. Use a ratchet wrench.



**5** Remove the fastening bolts.



6 Remove the inlet pipe.



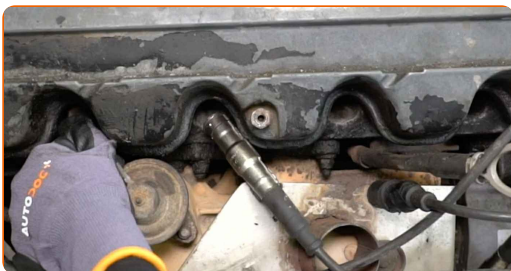
7 Remove the high tension cable bracket.



8 Make marks to indicate the order of installation of the spark plug wires.



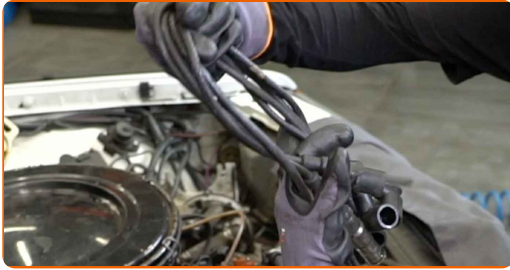
9 Disconnect the spark plug wires from the spark plugs.



10 Disconnect the high tension cables from the ignition distributor.



**11** Remove the high tension cables.



**12** Treat the ignition distributor terminals. Use a wire brush. Use dielectric grease.



**13** Fit new high tension cables.

**14** Connect the high tension cables to the ignition distributor.



Replacement: ignition leads – MERCEDES-BENZ W123 Coupe (C123). Tip from AUTODOC experts:

- Follow the installation sequence.

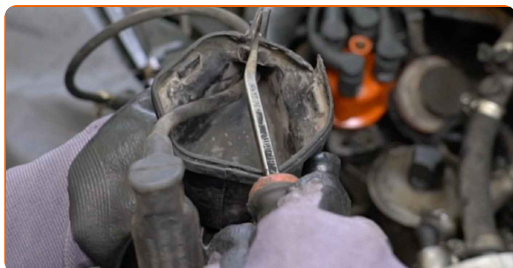
**15** Remove the ignition coil cover.



**16** Disconnect the high tension cable from the ignition coil.



**17** Remove the high tension cable from the ignition coil cover. Use a crowbar.



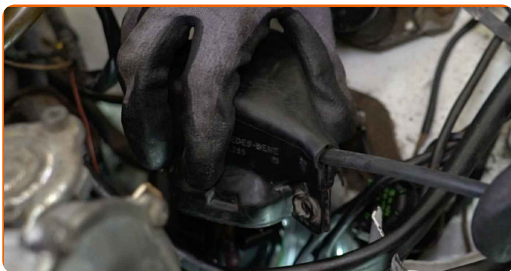
**18** Insert the new high tension cable in the ignition coil cover.



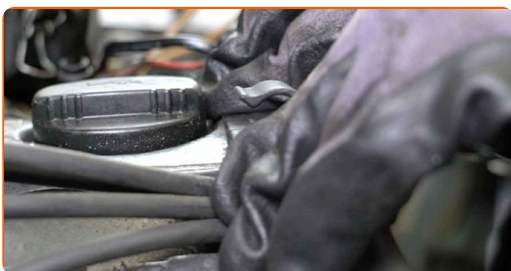
**19** Connect the high tension cable to the ignition coil.



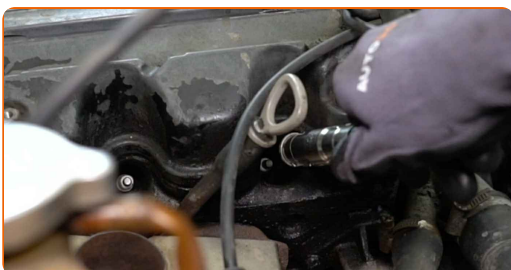
**20** Fit the ignition coil cover.



**21** Install the high tension cable bracket.



**22** Connect the spark plug wires to the spark plugs.



**AUTODOC recommends:**

- Replacement: ignition leads – MERCEDES-BENZ W123 Coupe (C123). Follow the installation steps.

**23** Attach the inlet pipe.





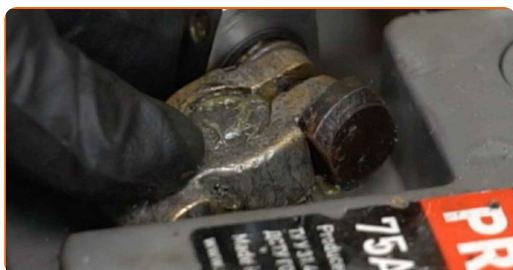
**24** Install the fastening bolts.



**25** Screw in the inlet pipe fasteners. Use a Phillips screwdriver. Use a drive socket #10. Use a ratchet wrench.



**26** Connect the earth cable terminal to the battery.



**27** Run the engine for a few minutes. This is necessary in order to make sure that the component operates properly.

**28** Shut off the engine.

**29** Remove the fender protection cover.

**30** Close the bonnet.

**WELL DONE!** 

**VIEW MORE TUTORIALS**

# AUTODOC – TOP QUALITY AND AFFORDABLE CAR PARTS ONLINE

**AUTODOC MOBILE APP: GREAT DEALS AND CONVENIENT SHOPPING**



**+ AUTODOC**

GET IT ON  
**Google Play**

 Download on the  
**App Store**

**Download**

**A GREAT SELECTION OF SPARE PARTS FOR YOUR CAR**

**IGNITION LEADS: A WIDE SELECTION**

## **DISCLAIMER:**

The document contains only general recommendations that may be useful for you when you perform repair or replacement work. AUTODOC shall not be liable for any loss, injury, damage of property occurring in the repair or replacement process due to incorrect use or misinterpretation of the provided information.

AUTODOC shall not be liable for any possible mistakes and uncertainties in this guide. The information provided is for information purposes only and cannot replace advice from specialists.

AUTODOC shall not be liable for incorrect or hazardous usage of equipment, tools and car parts. AUTODOC strongly recommends to be careful and observe the safety rules when performing repair or replacement works. Remember: usage of low quality auto parts does not guarantee you the appropriate level of road safety.

© Copyright 2023 – All the contents of this website, in particular texts, photographs and graphics, are protected by copyright. All rights, including reproduction, publication, editing and translation rights, are reserved by AUTODOC SE.