



How to change pollen
filter on **MERCEDES-
BENZ Vito Van (W638)** –
replacement guide

SIMILAR VIDEO TUTORIAL



This video shows the replacement procedure of a similar car part on another vehicle

Important!

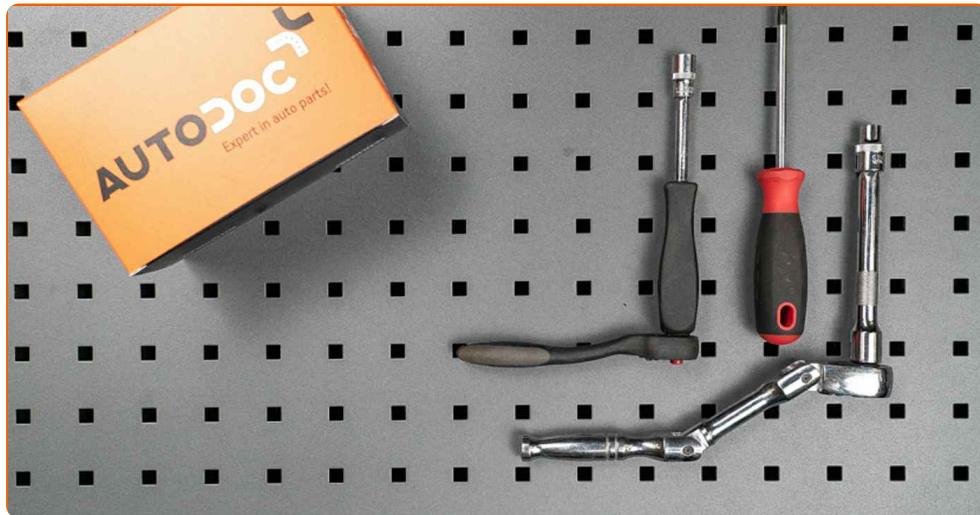
This replacement procedure can be used for:

MERCEDES-BENZ Vito Van (W638) 108 D 2.3 (638.064, 638.068), MERCEDES-BENZ Vito Van (W638) 110 D 2.3 (638.074, 638.078), MERCEDES-BENZ Vito Van (W638) 113 2.0 (638.014, 638.094), MERCEDES-BENZ Vito Van (W638) 114 2.3 (638.034, 638.094), MERCEDES-BENZ Vito Van (W638) 108 CDI 2.2 (638.094), MERCEDES-BENZ Vito Van (W638) 110 CDI 2.2 (638.094), MERCEDES-BENZ Vito Van (W638) 112 CDI 2.2 (638.094)

The steps may slightly vary depending on the car design.

This tutorial was created based on the replacement procedure for a similar car part on: MERCEDES-BENZ Vito Minibus (W638) 112 CDI 2.2 (638.194)

REPLACEMENT: POLLEN FILTER – MERCEDES-BENZ VITO VAN (W638). TOOLS YOU MIGHT NEED:



- Drive socket # E10
- Drive socket # 10
- Ratchet wrench
- Phillips screwdriver

[Buy tools](#)

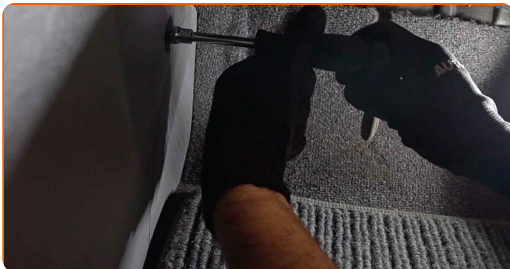
Replacement: pollen filter – MERCEDES-BENZ Vito Van (W638). AUTODOC experts recommend:

- Replace the cabin filter at least once every six months, in early spring and autumn seasons.
- Follow the terms, recommendations and requirements of the part operation provided by the manufacturer.
- If the air flow into the cabin has sharply reduced, replace the filter before a scheduled maintenance.
- All work should be done with the engine stopped.

REPLACEMENT: POLLEN FILTER – MERCEDES-BENZ VITO VAN (W638). RECOMMENDED SEQUENCE OF STEPS:

1

Unscrew the side fasteners of the lower centre console. Use a drive socket #10. Use a ratchet wrench.



2

Unscrew the front fasteners of the lower centre console. Use a Phillips screwdriver.



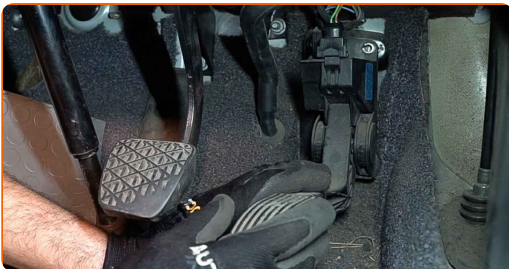
3 Remove the center console.



4 Unscrew and remove the bar that fastens the lower centre console. Use a drive socket #10. Use a ratchet wrench.



5 Unscrew the fastener of the accelerator pedal and move it aside. Use a drive socket #E10.



6 Remove the cabin filter housing cover.



AUTODOC recommends:

- Replacement: pollen filter – MERCEDES-BENZ Vito Van (W638). Do not use excessive force when removing the part as this may damage it.

7

Remove the cabin filter.

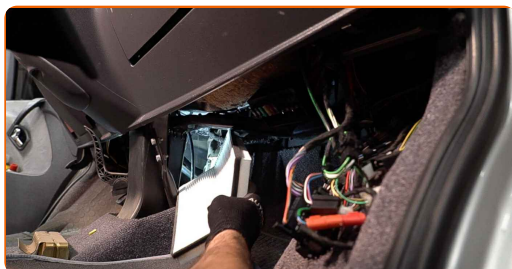


Replacement: pollen filter – MERCEDES-BENZ Vito Van (W638). Tip:

- Do not attempt to clean and reuse the filter - it will affect the quality of air cleaning inside the car.

8

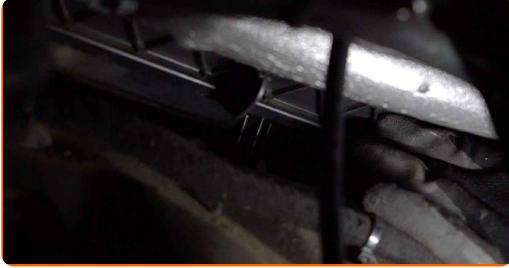
Install the cabin filter to its mounting seat.



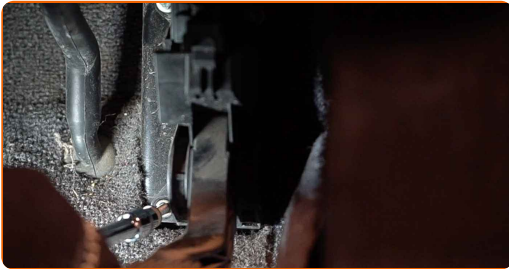
Replacement: pollen filter – MERCEDES-BENZ Vito Van (W638). Tip from AUTODOC:

- Follow the air flow direction arrow on the filter.
- Replacement: pollen filter – MERCEDES-BENZ Vito Van (W638). Be sure to position the filtering element correctly. Avoid misalignment.
- Take care to only use quality filters.

9 Reinstall the cabin filter housing cover.



10 Return the accelerator pedal to its initial position and screw in its fastener. Use a drive socket #E10.



11 Install and screw in the bar that fastens the lower centre console. Use a drive socket #10. Use a ratchet wrench.

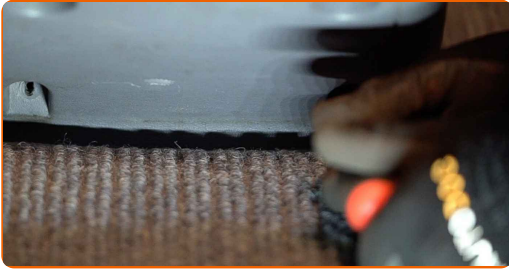


12 Install the central console.



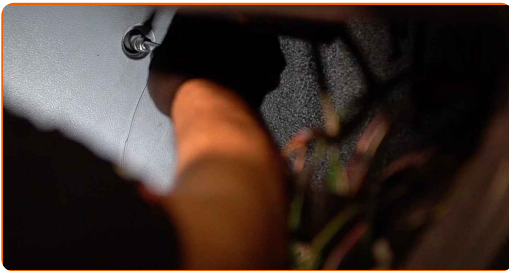
13

Screw in the front fasteners of the lower centre console. Use a Phillips screwdriver.



14.1

Screw in the side fasteners of the lower centre console.



14.2

Use a drive socket #10. Use a ratchet wrench.



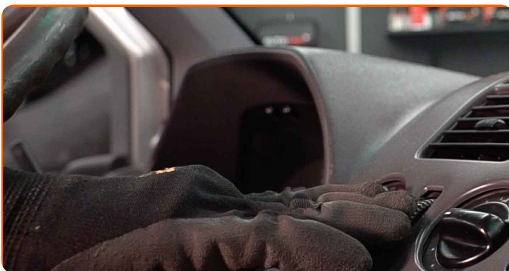
15

Switch on the ignition.



16

Switch on the air conditioning system. This is necessary in order to make sure that the component operates properly.



17

Switch off the ignition.



WELL DONE! 

[VIEW MORE TUTORIALS](#)

AUTODOC – TOP QUALITY AND AFFORDABLE CAR PARTS ONLINE

AUTODOC MOBILE APP: GREAT DEALS AND CONVENIENT SHOPPING

AUTODOC

GET IT ON
Google Play

Download on the
App Store

Download

A GREAT SELECTION OF SPARE PARTS FOR YOUR CAR

POLLEN FILTER: A WIDE SELECTION

(i) DISCLAIMER:

The document contains only general recommendations that may be useful for you when you perform repair or replacement work. AUTODOC shall not be liable for any loss, injury, damage of property occurring in the repair or replacement process due to incorrect use or misinterpretation of the provided information.

AUTODOC shall not be liable for any possible mistakes and uncertainties in this guide. The information provided is for information purposes only and cannot replace advice from specialists.

AUTODOC shall not be liable for incorrect or hazardous usage of equipment, tools and car parts. AUTODOC strongly recommends to be careful and observe the safety rules when performing repair or replacement works. Remember: usage of low quality auto parts does not guarantee you the appropriate level of road safety.

© Copyright 2021 – All the contents of this website, in particular texts, photographs and graphics, are protected by copyright. All rights, including reproduction, publication, editing and translation rights, are reserved by AUTODOC GmbH.