



How to change pollen  
filter on **MERCEDES-  
BENZ Vaneo (414)** –  
replacement guide

## SIMILAR VIDEO TUTORIAL



This video shows the replacement procedure of a similar car part on another vehicle

### Important!

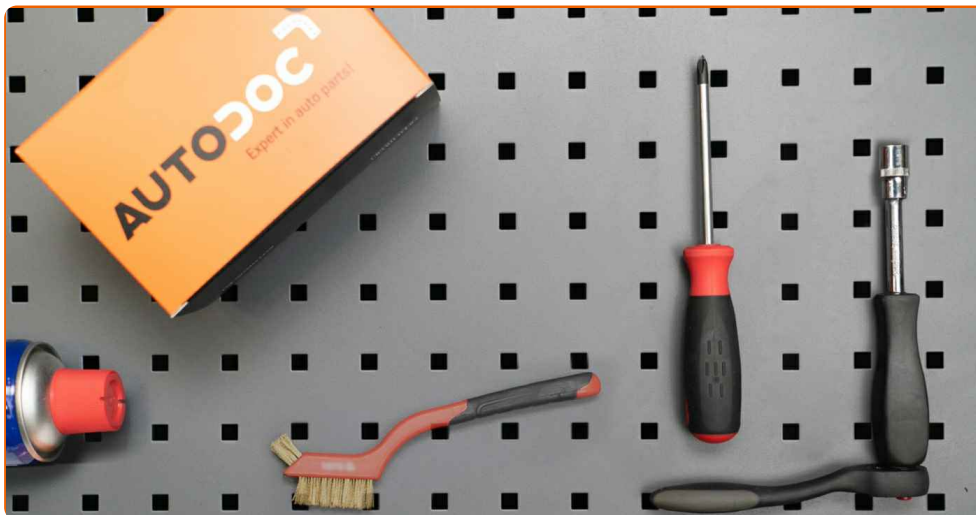
This replacement procedure can be used for:

MERCEDES-BENZ Vaneo (414) 1.7 CDI (414.700), MERCEDES-BENZ Vaneo (414) 1.6 (414.700), MERCEDES-BENZ Vaneo (414) 1.9 (414.700)

The steps may slightly vary depending on the car design.

This tutorial was created based on the replacement procedure for a similar car part on: MERCEDES-BENZ A-Class (W168) A 170 CDI (168.009, 168.109)

REPLACEMENT: POLLEN FILTER – MERCEDES-BENZ  
Vaneo (414). TOOLS YOU MIGHT NEED:



- Wire brush
- WD-40 spray
- Torque wrench
- Drive socket # 13
- Ratchet wrench
- Phillips Screwdriver
- Fender cover

**Buy tools**

Replacement: pollen filter – MERCEDES-BENZ Vaneo (414). AUTODOC experts recommend:

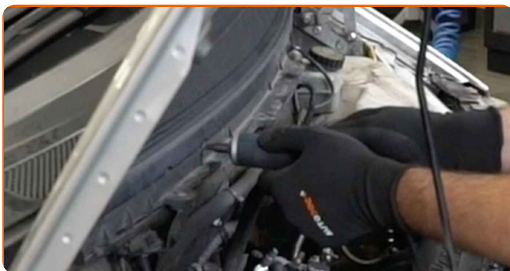
- Replace the cabin filter at least once every six months, in early spring and autumn seasons.
- Follow the terms, recommendations and requirements of the part operation provided by the manufacturer.
- If the air flow into the cabin has sharply reduced, replace the filter before a scheduled maintenance.
- Please note: all work on the car – MERCEDES-BENZ Vaneo (414) – should be done with the engine switched off.

## CARRY OUT REPLACEMENT IN THE FOLLOWING ORDER:

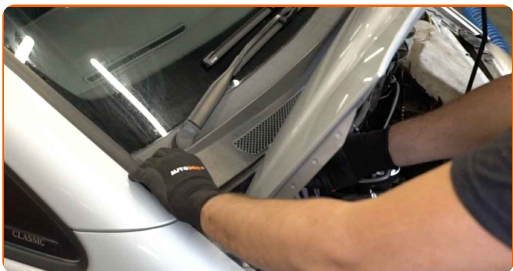
**1** Open the bonnet.

**2** Use a fender protection cover to prevent damaging paintwork and plastic parts of the car.

**3** Unscrew the fasteners of the cowl grille. Use a Phillips screwdriver.



**4** Raise up and remove the cowl grille.



**5** Remove the windscreen wiper arm nut covers.



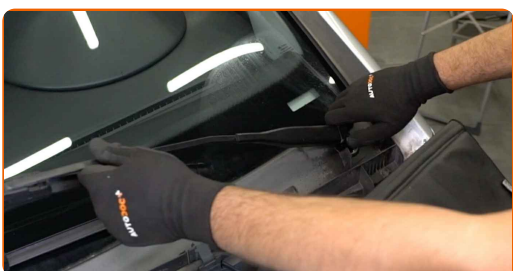
**6** Clean the fasteners of the wiper arms. Use a wire brush. Use WD-40 spray.



**7** Unscrew the fasteners of the windscreen wiper arms. Use a drive socket #13. Use a ratchet wrench.



**8** Remove the wiper arms.



9

Unscrew the fasteners of the lower part of the scuttle panel. Use a Phillips screwdriver.



10

Remove the lower part of the scuttle panel.



11

Remove the cabin filter.



Replacement: pollen filter – MERCEDES-BENZ Vaneo (414). Professionals recommend:

- Do not attempt to clean and reuse the filter - it will affect the quality of air cleaning inside the car.

12

Switch on the ignition.

13

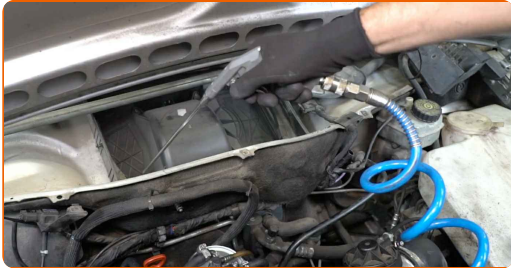
Close the heater flap.

**14**

Switch off the ignition.

**15**

Clean the cabin filter housing and cover.



Replacement: pollen filter – MERCEDES-BENZ Vaneo (414). AUTODOC experts recommend:

- Remove any debris from the cabin filter housing carefully to prevent contamination of the ventilation duct.

**16**

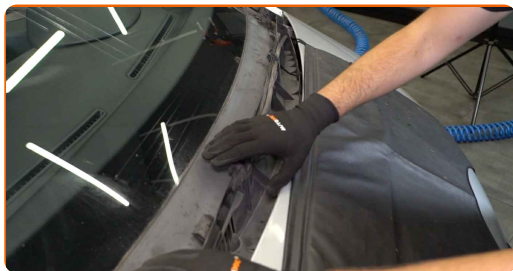
Install the cabin filter to its mounting seat.



Replacement: pollen filter – MERCEDES-BENZ Vaneo (414). Tip from AUTODOC experts:

- Follow the air flow direction arrow on the filter.
- Check out the correct location of the filter element. Do not skew.
- Take care to only use quality filters.

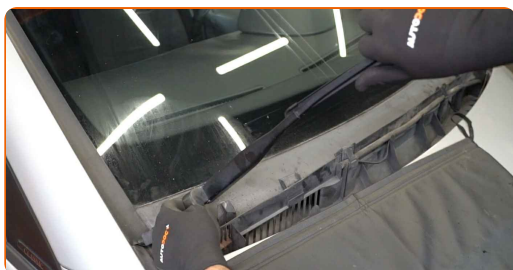
**17** Reinstall the lower part of the scuttle panel.



**18** Screw in the fasteners of the lower part of the scuttle panel. Use a Phillips screwdriver.



**19** Reinstall the wiper arms.



**AUTODOC recommends:**

- Make sure not to mix up the wiper arms on the driver's and passenger's sides.

**20** Tighten the wiper arm fasteners. Use a drive socket #13. Use a torque wrench. Tighten it to 23 Nm torque.





**21** Install the nut covers of the windscreen wiper arms.



**22** Install and secure the cowl grille. Use a Phillips screwdriver.



**23** Remove the fender protection cover.

**24** Close the hood.

**25** Switch on the ignition. The heater flap will automatically return to its normal position.

**26** Switch on the air conditioning system. This is necessary in order to make sure that the component operates properly.

**27** Switch off the ignition.

**WELL DONE!** 

**VIEW MORE TUTORIALS**

# AUTODOC – TOP QUALITY AND AFFORDABLE CAR PARTS ONLINE

**AUTODOC MOBILE APP: GREAT DEALS AND CONVENIENT SHOPPING**



**+ AUTODOC**

GET IT ON  
**Google Play**

Download on the  
**App Store**

**Download**

**A GREAT SELECTION OF SPARE PARTS FOR YOUR CAR**

**POLLEN FILTER: A WIDE SELECTION**

## **DISCLAIMER:**

The document contains only general recommendations that may be useful for you when you perform repair or replacement work. AUTODOC shall not be liable for any loss, injury, damage of property occurring in the repair or replacement process due to incorrect use or misinterpretation of the provided information.

AUTODOC shall not be liable for any possible mistakes and uncertainties in this guide. The information provided is for information purposes only and cannot replace advice from specialists.

AUTODOC shall not be liable for incorrect or hazardous usage of equipment, tools and car parts. AUTODOC strongly recommends to be careful and observe the safety rules when performing repair or replacement works. Remember: usage of low quality auto parts does not guarantee you the appropriate level of road safety.

© Copyright 2022 – All the contents of this website, in particular texts, photographs and graphics, are protected by copyright. All rights, including reproduction, publication, editing and translation rights, are reserved by AUTODOC GmbH.