



How to change spark
plugs on **MERCEDES-
BENZ T1 Bus (601)** –
replacement guide

SIMILAR VIDEO TUTORIAL



This video shows the replacement procedure of a similar car part on another vehicle

Important!

This replacement procedure can be used for:
MERCEDES-BENZ T1 Bus (601) 210 2.3

The steps may slightly vary depending on the car design.

This tutorial was created based on the replacement procedure for a similar car part on: MERCEDES-BENZ 190 (W201) 2.0 (201.023)

REPLACEMENT: SPARK PLUGS – MERCEDES-BENZ T1 BUS (601). TOOLS YOU'LL NEED:



- Wire brush
- High-temperature anti-seize lubricant
- Dielectric grease
- Torque wrench
- Combination spanner #10
- Drive socket # 10
- Spark plug socket # 16
- Ratchet wrench
- Phillips screwdriver
- Crow bar
- Fender cover

Buy tools

Replacement: spark plugs – MERCEDES-BENZ T1 Bus (601). Professionals recommend:

- The replacement procedure is the same for all spark plugs.
- Warning! Shut down the engine before starting any work – MERCEDES-BENZ T1 Bus (601).

CARRY OUT REPLACEMENT IN THE FOLLOWING ORDER:

1 Open the bonnet.

2 Use a fender protection cover to prevent damaging paintwork and plastic parts of the car.

3 Disconnect the earth cable terminal from the battery. Use a combination spanner #10.



4 Unscrew the inlet pipe fasteners. Use a Phillips screwdriver. Use a drive socket #10. Use a ratchet wrench.



5 Remove the fastening bolts.



6 Remove the inlet pipe.



7 Disconnect the spark plug wires from the spark plugs.



8 Clean dirt, dust and debris from inside the spark plug wells.



9 Unscrew the spark plugs. Use the spark plug socket #16. Use a ratchet wrench.



10 Take out the spark plugs.



11 Apply a thin layer of a special high temperature anti-seize lubricant to the threads of the new spark plugs.



12 Install the new spark plugs into their mounting seats.



13 Screw new spark plugs and tighten them. Use the spark plug socket #16. Use a torque wrench. Tighten it to 22 nm torque.



Replacement: spark plugs – MERCEDES-BENZ T1 Bus (601). AUTODOC recommends:

- Don't tighten the plugs with excessive force. Exceeding tightening torque can damage the thread connection.
- Be careful when working with a spark plug wrench. Its skewing can cause damage to the threaded connection.

14

Connect the spark plug wires to the spark plugs.



AUTODOC recommends:

- Follow the installation sequence.

15

Attach the inlet pipe.



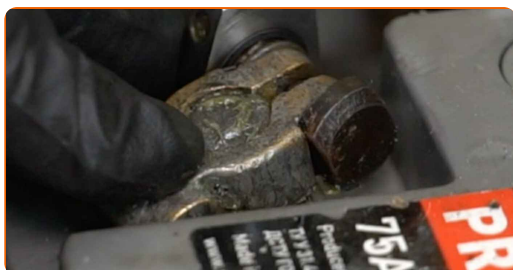
16 Install the fastening bolts.



17 Screw in the inlet pipe fasteners. Use a Phillips screwdriver. Use a drive socket #10. Use a ratchet wrench.



18 Connect the earth cable terminal to the battery.



19 Run the engine for a few minutes. This is necessary in order to make sure that the component operates properly.

20 Shut off the engine.

21 Remove the fender protection cover.

22

Close the bonnet.

WELL DONE! 

VIEW MORE TUTORIALS

AUTODOC – TOP QUALITY AND AFFORDABLE CAR PARTS ONLINE

AUTODOC MOBILE APP: GREAT DEALS AND CONVENIENT SHOPPING



+ AUTODOC

GET IT ON
Google Play

 Download on the
App Store

Download

A GREAT SELECTION OF SPARE PARTS FOR YOUR CAR

SPARK PLUGS: A WIDE SELECTION

DISCLAIMER:

The document contains only general recommendations that may be useful for you when you perform repair or replacement work. AUTODOC shall not be liable for any loss, injury, damage of property occurring in the repair or replacement process due to incorrect use or misinterpretation of the provided information.

AUTODOC shall not be liable for any possible mistakes and uncertainties in this guide. The information provided is for information purposes only and cannot replace advice from specialists.

AUTODOC shall not be liable for incorrect or hazardous usage of equipment, tools and car parts. AUTODOC strongly recommends to be careful and observe the safety rules when performing repair or replacement works. Remember: usage of low quality auto parts does not guarantee you the appropriate level of road safety.

© Copyright 2023 – All the contents of this website, in particular texts, photographs and graphics, are protected by copyright. All rights, including reproduction, publication, editing and translation rights, are reserved by AUTODOC SE.