



How to change engine oil
and filter on **MERCEDES-
BENZ Sprinter Classic
4,6-t Van (W909)** –
replacement guide

SIMILAR VIDEO TUTORIAL



This video shows the replacement procedure of a similar car part on another vehicle

Important!

This replacement procedure can be used for:

MERCEDES-BENZ Sprinter Classic 4,6-t Van (W909) 413 CDI (909.643)

The steps may slightly vary depending on the car design.

This tutorial was created based on the replacement procedure for a similar car part on: MERCEDES-BENZ C-Class Saloon (W204) C 220 CDI (204.008)

REPLACEMENT: ENGINE OIL AND FILTER – MERCEDES-BENZ SPRINTER CLASSIC 4,6-T VAN (W909). TOOLS YOU MIGHT NEED:



- Wire brush
- All-purpose cleaning spray
- Torque wrench
- Drive socket # 13
- Torx bit E11
- Oil filter cup socket 76-14F
- Ratchet wrench
- Flat screwdriver
- Funnel
- Oil drain pan
- Fender cover

Buy tools

Replacement: engine oil and filter – MERCEDES-BENZ Sprinter Classic 4,6-t Van (W909). Tip from AUTODOC:

- Replace the oil filter every time when changing motor oil.
- Wear gloves to prevent contact with hot liquid.
- Please note: all work on the car – MERCEDES-BENZ Sprinter Classic 4,6-t Van (W909) – should be done with the engine switched off.

CARRY OUT REPLACEMENT IN THE FOLLOWING ORDER:

1 Open the hood.

2 Use a fender protection cover to prevent damaging paintwork and plastic parts of the car.

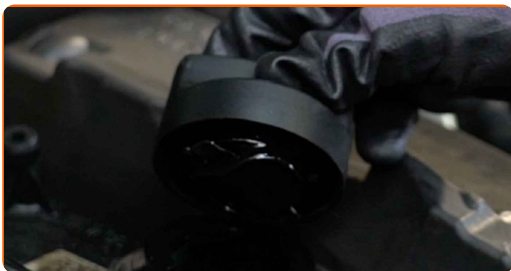
3 Remove the engine cover.



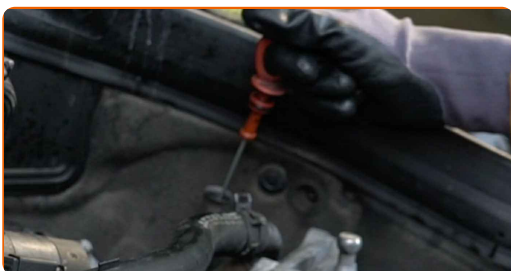
AUTODOC recommends:

- Replacement: engine oil and filter – MERCEDES-BENZ Sprinter Classic 4,6-t Van (W909). Do not use excessive force when removing the part as this may damage it.

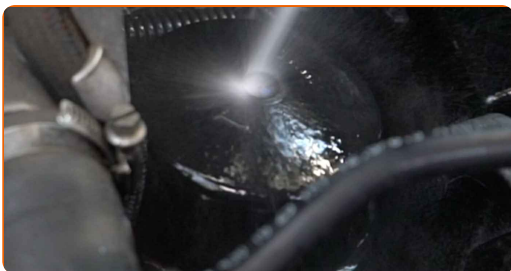
4 Unscrew the oil filler plug.



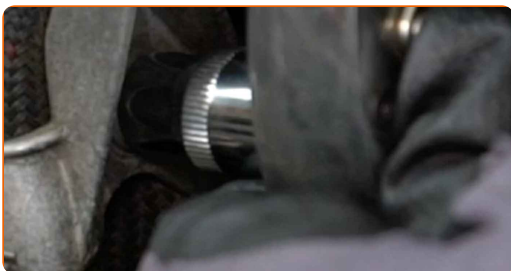
5 Pull up the oil dipstick.



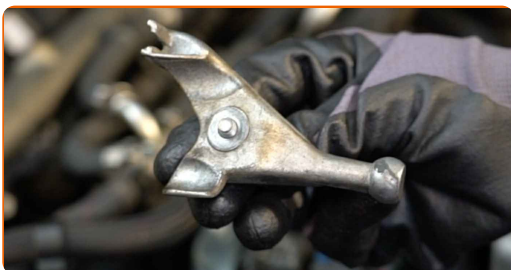
6 Clean the oil filter housing cap. Use all-purpose cleaning spray.



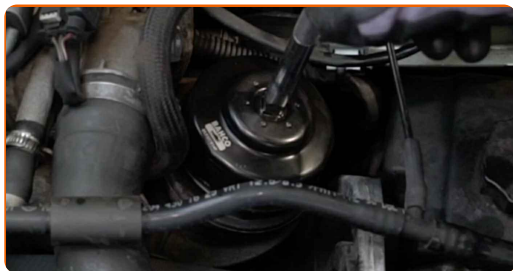
7 Unscrew the bracket fastener. Use Torx E11. Use a ratchet wrench.



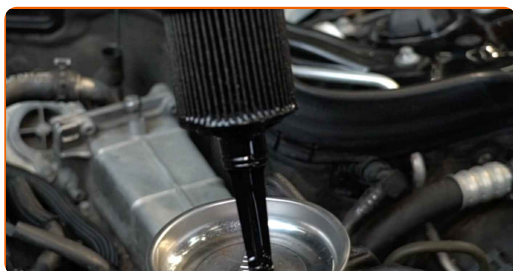
8 Remove the bracket.



9 Unscrew the filter housing cap together with the old filter element. Use the 76-14F socket. Use a ratchet wrench.



10 Take the oil filter out of its housing.



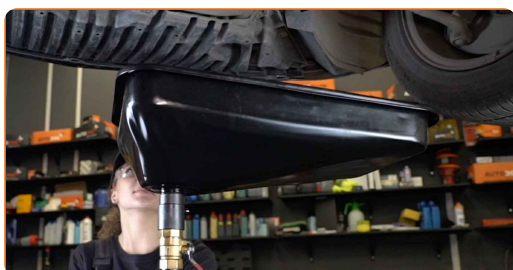
11 Put the old oil filter in the container.

12 Lift the car using a jack or place it over an inspection pit.

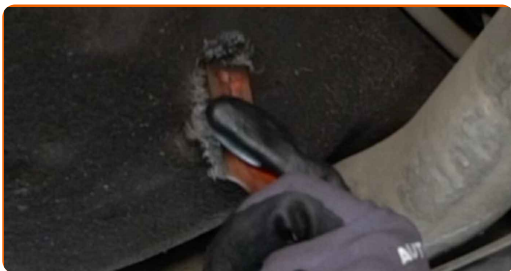
AUTODOC recommends:

- The vehicle must be on even keel, and if it is at an angle, the drain plug must be at the lowest point.

13 Put a waste oil container with at least 7 l capacity under the drainage hole.



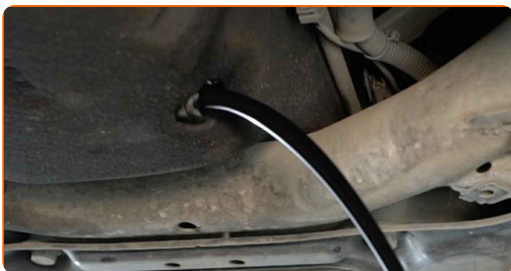
14 Clean the area of the oil pan drainage hole. Use a wire brush. Use all-purpose cleaning spray.



15 Unscrew the drain plug. Use a drive socket #13. Use a ratchet wrench.



16 Drain the used oil.



Replacement: engine oil and filter – MERCEDES-BENZ Sprinter Classic 4,6-t Van (W909). Tip from AUTODOC experts:

- Caution! The oil may be hot.
- Wait until the oil has completely drained from the drainage hole.

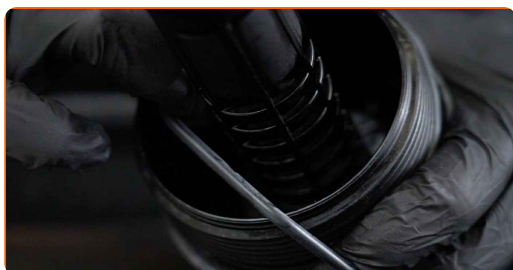
17 Remove old o-rings from the oil filter cover. Use a flat screwdriver.



18 Clean the oil filter housing cap. Use all-purpose cleaning spray.



19 Install new O-rings and a new oil filter to their mounting seats on the filter cover.

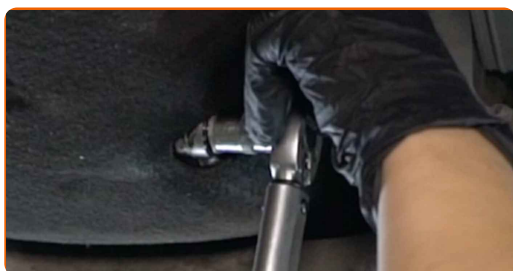


Please note!

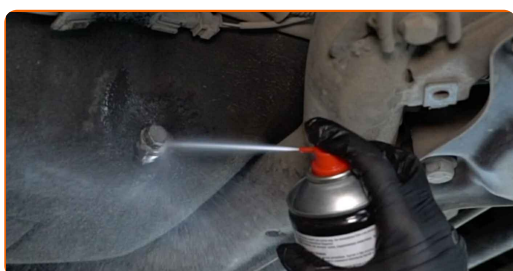
- Make sure to install the filter correctly. Don't mix up the sides of the part.

20 Clean the area of the oil pan drainage hole. Use all-purpose cleaning spray.

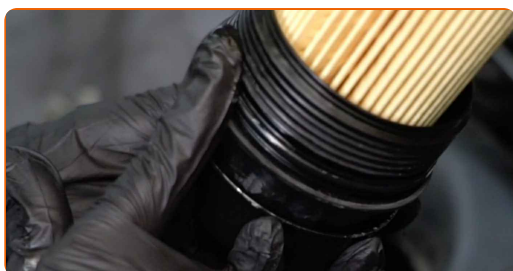
- 21 Screw in the new drainage plug and tighten it. Use a drive socket #13. Use a torque wrench. Tighten it to 30 Nm torque.



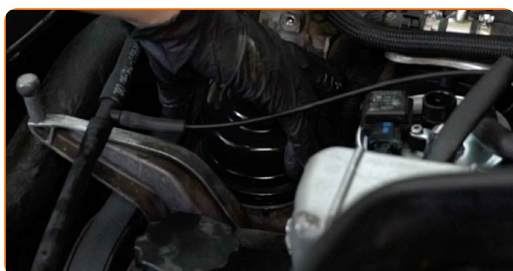
- 22 Clean the area of the oil pan drainage hole. Use all-purpose cleaning spray.



- 23 Lubricate the rubber seal of the new filter with a little amount of fresh oil.

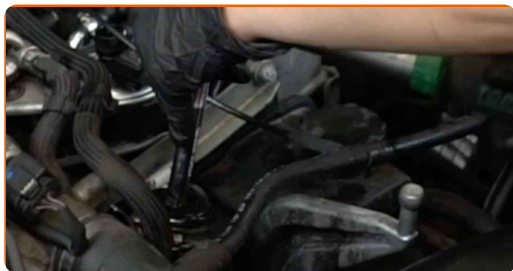


- 24 Install the cover of the oil filter housing and screw it on.



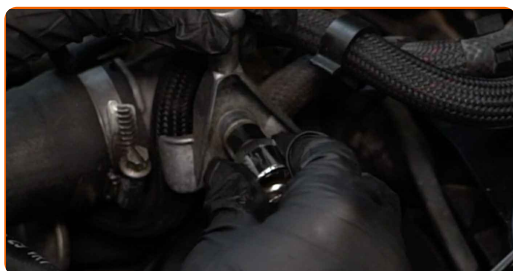
25

Tighten the oil filter cap. Use the 76-14F socket. Use a torque wrench. Tighten it to 25 Nm torque.



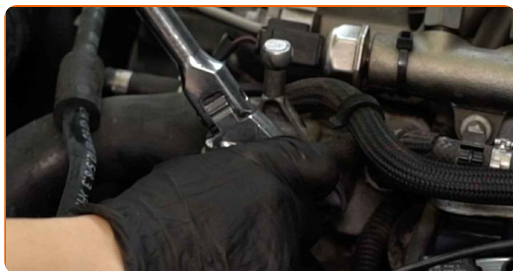
26

Install the bracket.



27

Screw in the bracket fastener. Use Torx E11. Use a ratchet wrench.

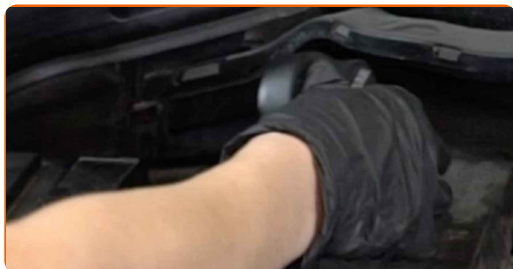


28

Lower the car.

29

Remove the oil filler cap.



30 Insert the funnel.



31 Pour new oil into the engine in the amount recommended by the car manufacturer.



Replacement: engine oil and filter – MERCEDES-BENZ Sprinter Classic 4,6-t Van (W909). Tip from AUTODOC:

- Use the oil recommended by the manufacturer.

32 Check the oil level using the dipstick. Top up oil if necessary.



Please note!

- The oil level should be between the Min and Max marks.

33 Install the oil filler cap.



34 Tighten the oil filler cap.



35 Run the engine for a few minutes.



36 After the oil pressure warning light goes out, stop the engine.

AUTODOC recommends:

- Note that oil pressure warning light, which indicates insufficient pressure in the lubrication system, may be on for a longer time than usual. After a few seconds, the oil will fill all the channels, and the light will go out.

37 Check the oil level 5 minutes after the stop of the engine operation using a dipstick and add oil if necessary.



Please note!

- The oil level should be between the Min and Max marks.
- Make sure that the oil filler cap is properly tightened.
- Check the threaded plug of the drainage hole and the oil filter seal for tightness. If necessary, carefully tighten them up.

38 Install the engine cover and secure it.



AUTODOC recommends:

- Replacement: engine oil and filter – MERCEDES-BENZ Sprinter Classic 4,6-t Van (W909). Do not use excessive force during installation. This may damage the part.

39 Remove the fender protection cover.

40 Close the hood.

Replacement: engine oil and filter – MERCEDES-BENZ Sprinter Classic 4,6-t Van (W909). AUTODOC recommends:

- To protect the environment from pollution, be sure to dispose of the used filters at special collection points.

WELL DONE! 

[VIEW MORE TUTORIALS](#)

AUTODOC – TOP QUALITY AND AFFORDABLE CAR PARTS ONLINE

AUTODOC MOBILE APP: GREAT DEALS AND CONVENIENT SHOPPING



+ AUTODOC

GET IT ON
Google Play

 Download on the
App Store

Download

A GREAT SELECTION OF SPARE PARTS FOR YOUR CAR

OIL FILTER: A WIDE SELECTION

DISCLAIMER:

The document contains only general recommendations that may be useful for you when you perform repair or replacement work. AUTODOC shall not be liable for any loss, injury, damage of property occurring in the repair or replacement process due to incorrect use or misinterpretation of the provided information.

AUTODOC shall not be liable for any possible mistakes and uncertainties in this guide. The information provided is for information purposes only and cannot replace advice from specialists.

AUTODOC shall not be liable for incorrect or hazardous usage of equipment, tools and car parts. AUTODOC strongly recommends to be careful and observe the safety rules when performing repair or replacement works. Remember: usage of low quality auto parts does not guarantee you the appropriate level of road safety.

© Copyright 2022 – All the contents of this website, in particular texts, photographs and graphics, are protected by copyright. All rights, including reproduction, publication, editing and translation rights, are reserved by AUTODOC GmbH.