



How to change engine oil
and filter on **MERCEDES-
BENZ Sprinter 5-T
Platform/Chassis
(W906)** – replacement
guide

SIMILAR VIDEO TUTORIAL



This video shows the replacement procedure of a similar car part on another vehicle

 Important!

This replacement procedure can be used for:

MERCEDES-BENZ Sprinter 5-T Platform/Chassis (W906) 509 CDI 2.2 (906.153, 906.155, 906.253), MERCEDES-BENZ Sprinter 5-T Platform/Chassis (W906) 511 CDI 2.2 (906.153, 906.155, 906.253), MERCEDES-BENZ Sprinter 5-T Platform/Chassis (W906) 515 CDI 2.2 (906.153, 906.155, 906.253), MERCEDES-BENZ Sprinter 5-T Platform/Chassis (W906) 513 CDI 2.1 (906.155, 906.253, 906.255), MERCEDES-BENZ Sprinter 5-T Platform/Chassis (W906) 515 CDI 2.2 4x4 (906.153, 906.155, 906.253), MERCEDES-BENZ Sprinter 5-T Platform/Chassis (W906) 513 CDI 2.2 (906.135, 906.155, 906.253)

The steps may slightly vary depending on the car design.

This tutorial was created based on the replacement procedure for a similar car part on: MERCEDES-BENZ Vito Minibus (W638) 112 CDI 2.2 (638.194)

**REPLACEMENT: ENGINE OIL AND FILTER – MERCEDES-BENZ SPRINTER 5-T PLATFORM/CHASSIS (W906).
TOOLS YOU MIGHT NEED:**



- All-purpose cleaning spray
- Oil filter cup socket 76-14F
- Drive socket # 13
- Combination spanner #13
- Ratchet wrench
- Torque wrench
- Flat Screwdriver
- Funnel
- Oil drain pan
- Microfibre towel
- Fender cover

Buy tools

AUTODOC recommends:

- Replace the oil filter every time when changing motor oil.
- Warning! Shut down the engine before starting any work – MERCEDES-BENZ Sprinter 5-T Platform/Chassis (W906).
- Wear gloves to prevent contact with hot liquid.

CARRY OUT REPLACEMENT IN THE FOLLOWING ORDER:

1 Open the hood.

2 Use a fender protection cover to prevent damaging paintwork and plastic parts of the car.

3 Unscrew the oil filler plug.



4 Clean the area of the oil pan drainage hole. Use all-purpose cleaning spray.

5 Lift the car using a jack or place it over an inspection pit.

Replacement: engine oil and filter – MERCEDES-BENZ Sprinter 5-T Platform/Chassis (W906). Tip from AUTODOC:

- The vehicle must be on even keel, and if it is at an angle, the drain plug must be at the lowest point.

6 Put a waste oil container with at least 8 l capacity under the drainage hole.



7 Unscrew the drain plug. Use a combination spanner #13.



8 Drain the used oil.



Replacement: engine oil and filter – MERCEDES-BENZ Sprinter 5-T Platform/Chassis (W906). Tip from AUTODOC experts:

- Caution! The oil may be hot.

9 Clean the oil filter housing cap. Use all-purpose cleaning spray.



10 Unscrew the oil filter. Use the 76-14F socket. Use a ratchet wrench.



11 Remove the oil filter. Put the old oil filter in the container.

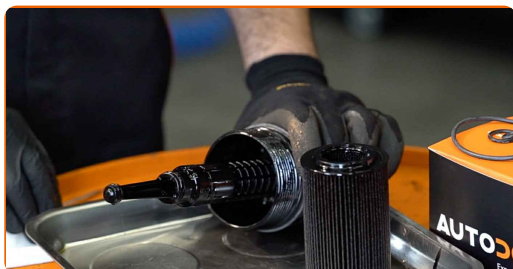


Replacement: engine oil and filter – MERCEDES-BENZ Sprinter 5-T Platform/Chassis (W906). Tip:

- Move up the container. The oil starts to drain out of the drainage hole immediately after you have removed the oil filter.

12 Cover the oil filter housing with a microfibre towel to prevent dirt and foreign objects from getting into the system.

13 Detach the oil filter from the filter cover.



14 Remove old o-rings from the oil filter cover. Use a flat screwdriver.



15 Clean the oil filter housing cap. Use all-purpose cleaning spray.



16 Install new O-rings and a new oil filter to their mounting seats on the filter cover.



Please note!

- Make sure to install the filter correctly. Don't mix up the sides of the part.

17 Remove the microfibre towel from the oil filter housing.

18 Lubricate the rubber seal of the new filter with a little amount of fresh oil.



19 Screw the new filter into its place.



20 Screw the cap. Use the 76-14F socket. Use a torque wrench. Tighten it to 25 Nm torque.



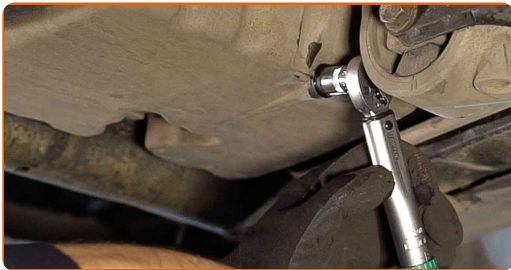
AUTODOC recommends:

- Wait until the oil has completely drained from the drainage hole.

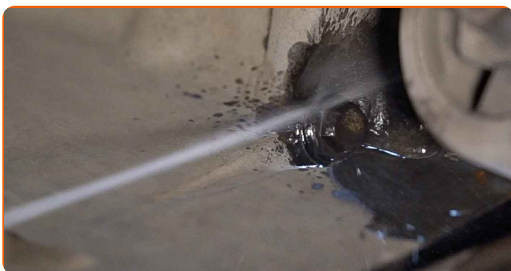
21 Clean the area of the oil pan drainage hole.



- 22 Screw in the new drainage plug and tighten it. Use a drive socket #13. Use a torque wrench. Tighten it to 30 Nm torque.

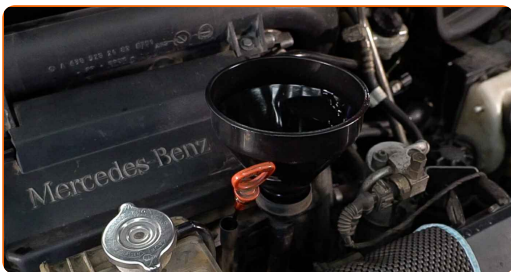


- 23 Clean the area of the oil pan drainage hole. Use all-purpose cleaning spray.



- 24 Lower the car.

- 25 Remove the oil filler cap. Insert the funnel.



- 26 Pour new oil into the engine in the amount recommended by the car manufacturer.



AUTODOC recommends:

- Use the oil recommended by the manufacturer.

27

Check the oil level using the dipstick. Top up oil if necessary.



Please note!

- The oil level should be between the Min and Max marks.

28

Tighten the oil filler cap.



29

Run the engine for a few minutes. After the oil pressure warning light goes out, stop the engine.

30

Check the oil level 5 minutes after the stop of the engine operation using a dipstick and add oil if necessary.



Replacement: engine oil and filter – MERCEDES-BENZ Sprinter 5-T Platform/Chassis (W906). AUTODOC experts recommend:

- The oil level should be between the Min and Max marks.
- Make sure that the oil filler cap is properly tightened.
- Check the threaded plug of the drainage hole and the oil filter seal for tightness. If necessary, carefully tighten them up.

31

Remove the fender protection cover.

32

Close the hood.

Replacement: engine oil and filter – MERCEDES-BENZ Sprinter 5-T Platform/Chassis (W906). Tip:

- Note that oil pressure warning light, which indicates insufficient pressure in the lubrication system, may be on for a longer time than usual. After a few seconds, the oil will fill all the channels, and the light will go out.
- To protect the environment from pollution, be sure to dispose of the used filters at special collection points.

WELL DONE! 

[VIEW MORE TUTORIALS](#)

AUTODOC – TOP QUALITY AND AFFORDABLE CAR PARTS ONLINE

AUTODOC MOBILE APP: GREAT DEALS AND CONVENIENT SHOPPING



AUTODOC

GET IT ON  **Google Play**

Download on the  **App Store**

Download

A GREAT SELECTION OF SPARE PARTS FOR YOUR CAR

OIL FILTER: A WIDE SELECTION

DISCLAIMER:

The document contains only general recommendations that may be useful for you when you perform repair or replacement work. AUTODOC shall not be liable for any loss, injury, damage of property occurring in the repair or replacement process due to incorrect use or misinterpretation of the provided information.

AUTODOC shall not be liable for any possible mistakes and uncertainties in this guide. The information provided is for information purposes only and cannot replace advice from specialists.

AUTODOC shall not be liable for incorrect or hazardous usage of equipment, tools and car parts. AUTODOC strongly recommends to be careful and observe the safety rules when performing repair or replacement works. Remember: usage of low quality auto parts does not guarantee you the appropriate level of road safety.

© Copyright 2022 – All the contents of this website, in particular texts, photographs and graphics, are protected by copyright. All rights, including reproduction, publication, editing and translation rights, are reserved by AUTODOC GmbH.