



How to change air filter
on **MERCEDES-BENZ**
Sprinter 3-T Van (W903)
– replacement guide

SIMILAR VIDEO TUTORIAL



This video shows the replacement procedure of a similar car part on another vehicle

Important!

This replacement procedure can be used for:

MERCEDES-BENZ Sprinter 3-T Van (W903) 308 D 2.3, MERCEDES-BENZ Sprinter 3-T Van (W903) 310 D 2.9, MERCEDES-BENZ Sprinter 3-T Van (W903) 314 2.3, MERCEDES-BENZ Sprinter 3-T Van (W903) 312 D 2.9, MERCEDES-BENZ Sprinter 3-T Van (W903) 308 CDI 2.2, MERCEDES-BENZ Sprinter 3-T Van (W903) 311 CDI 2.2, MERCEDES-BENZ Sprinter 3-T Van (W903) 313 CDI 2.2, MERCEDES-BENZ Sprinter 3-T Van (W903) 316 CDI 2.7, MERCEDES-BENZ Sprinter 3-T Van (W903) 314 NGT 2.3, MERCEDES-BENZ Sprinter 3-T Van (W903) 314 2.3 4x4, MERCEDES-BENZ Sprinter 3-T Van (W903) 311 CDI 2.2 4x4, MERCEDES-BENZ Sprinter 3-T Van (W903) 313 CDI 2.2 4x4, MERCEDES-BENZ Sprinter 3-T Van (W903) 316 CDI 2.7 4x4, MERCEDES-BENZ Sprinter 3-T Van (W903) 312 D 2.9 4x4, MERCEDES-BENZ Sprinter 3-T Van (W903) 310 D 2.9 4x4

The steps may slightly vary depending on the car design.

This tutorial was created based on the replacement procedure for a similar car part on: MERCEDES-BENZ Vito Minibus (W638) 112 CDI 2.2 (638.194)

REPLACEMENT: AIR FILTER – MERCEDES-BENZ
SPRINTER 3-T VAN (W903). TOOLS YOU'LL NEED:



- Drive socket # 7
- Ratchet wrench
- Phillips screwdriver
- Crow bar
- Microfibre towel
- Fender cover

[Buy tools](#)

Replacement: air filter – MERCEDES-BENZ Sprinter 3-T Van (W903). Tip from AUTODOC experts:

- Follow the terms, recommendations and requirements of the part operation provided by the manufacturer.
- Please note: all work on the car – MERCEDES-BENZ Sprinter 3-T Van (W903) – should be done with the engine switched off.

CARRY OUT REPLACEMENT IN THE FOLLOWING ORDER:

1 Open the bonnet.

2 Use a fender protection cover to prevent damaging paintwork and plastic parts of the car.

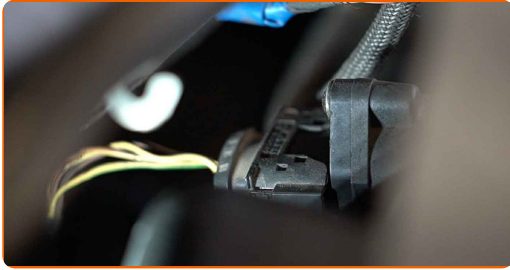
3 Detach the air intake hose clamp. Use a drive socket #7. Use a ratchet wrench.



4 Disconnect the air intake pipe from the air filter housing. Use a crowbar.



5 Unplug the mass air flow sensor connector.



6 Undo the fastening screws of the air filter cover. Use a Phillips screwdriver.



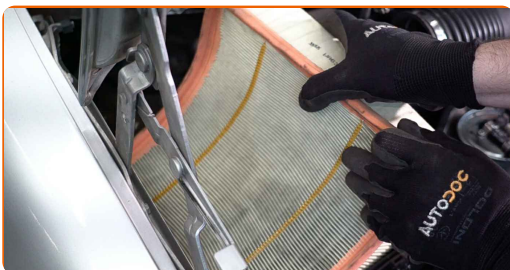
7 Release the air filter cover clips.



8 Take off the filter lid.

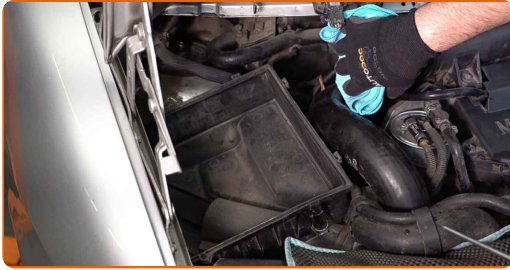


9 Remove the filter element from the filter housing.



10

Cover the air intake hose with a microfibre towel to prevent dust and dirt from getting into the system.



11

Clean the air filter cover and housing.



Replacement: air filter – MERCEDES-BENZ Sprinter 3-T Van (W903).
Professionals recommend:

- Before cleaning the air filter cover and housing, cover the air duct parts, mass airflow sensor (if available), throttle valve with a clean cloth.

12

Insert a new filter element into the filter housing. Make sure that the filter edge fits tight to the housing.

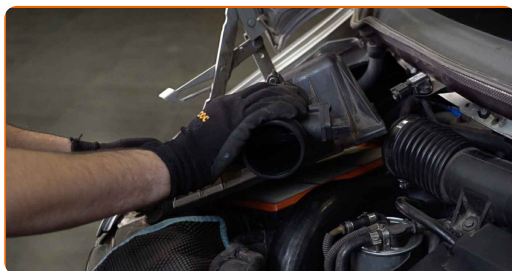


AUTODOC recommends:

- Replacement: air filter – MERCEDES-BENZ Sprinter 3-T Van (W903). Be sure to position the filtering element correctly. Avoid misalignment.
- Take care to only use quality filters.
- During installation, make sure to prevent dust and dirt from getting into the air filter housing.

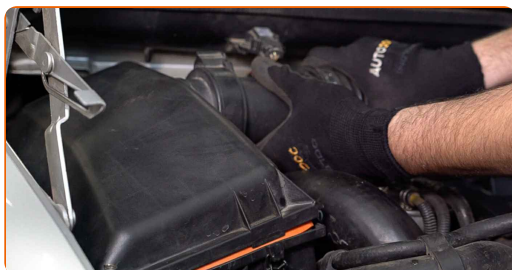
13

Reinstall the air filter cover. Fasten it.



14

Connect the air intake pipe to the air filter housing.



15

Press the air filter cover clips into place.



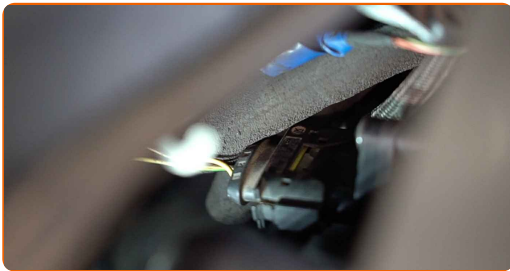
16

Screw in the fastening screws of the air filter cover. Use a Phillips screwdriver.



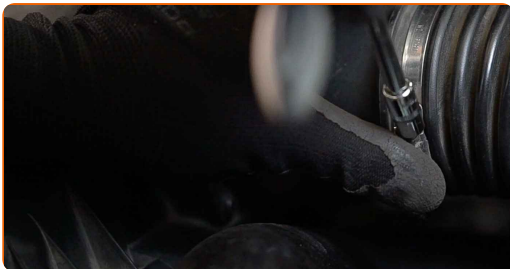
17

Plug in the mass air flow sensor connector.



18

Fasten the clamp on the air intake hose. Use a drive socket #7. Use a ratchet wrench.



19

Remove the fender protection cover.

20

Close the hood.

WELL DONE! 👍

[VIEW MORE TUTORIALS](#)

AUTODOC – TOP QUALITY AND AFFORDABLE CAR PARTS ONLINE

AUTODOC MOBILE APP: GREAT DEALS AND CONVENIENT SHOPPING



AUTODOC

GET IT ON
 **Google Play**

Download on the
 **App Store**

Download

A GREAT SELECTION OF SPARE PARTS FOR YOUR CAR

AIR FILTER: A WIDE SELECTION

DISCLAIMER:

The document contains only general recommendations that may be useful for you when you perform repair or replacement work. AUTODOC shall not be liable for any loss, injury, damage of property occurring in the repair or replacement process due to incorrect use or misinterpretation of the provided information.

AUTODOC shall not be liable for any possible mistakes and uncertainties in this guide. The information provided is for information purposes only and cannot replace advice from specialists.

AUTODOC shall not be liable for incorrect or hazardous usage of equipment, tools and car parts. AUTODOC strongly recommends to be careful and observe the safety rules when performing repair or replacement works. Remember: usage of low quality auto parts does not guarantee you the appropriate level of road safety.

© Copyright 2022 – All the contents of this website, in particular texts, photographs and graphics, are protected by copyright. All rights, including reproduction, publication, editing and translation rights, are reserved by AUTODOC GmbH.