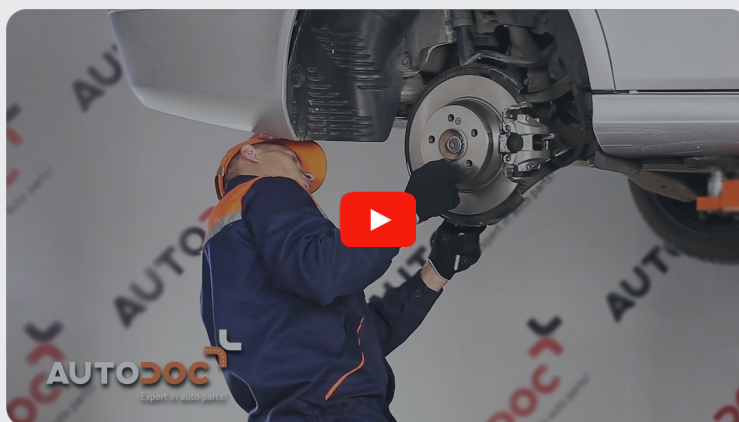




How to change rear anti
roll bar links on
MERCEDES-BENZ SL
(R230) – replacement
guide

SIMILAR VIDEO TUTORIAL



This video shows the replacement procedure of a similar car part on another vehicle

Important!

This replacement procedure can be used for:

MERCEDES-BENZ SL (R230) 500 5.0 (230.475), MERCEDES-BENZ SL (R230) 55 AMG 5.4 (230.474), MERCEDES-BENZ SL (R230) 55 AMG 5.4 Kompressor (230.474), MERCEDES-BENZ SL (R230) 350 3.7 (230.467), MERCEDES-BENZ SL (R230) 600 5.5 (230.476), MERCEDES-BENZ SL (R230) 65 AMG 6.0 (230.479), MERCEDES-BENZ SL (R230) 350 3.5, MERCEDES-BENZ SL (R230) 63 AMG 6.2 (230.470), MERCEDES-BENZ SL (R230) 280 3.0, MERCEDES-BENZ SL (R230) 300 3.0, MERCEDES-BENZ SL (R230) 65 AMG 6.0 Black Series (230.479)

The steps may slightly vary depending on the car design.

This tutorial was created based on the replacement procedure for a similar car part on: MERCEDES-BENZ E-Class Saloon (W211) E 220 CDI (211.006)

REPLACEMENT: ANTI ROLL BAR LINKS – MERCEDES-BENZ SL (R230). LIST OF THE TOOLS YOU'LL NEED:



- Wire brush
- All-purpose cleaning spray
- WD-40 spray
- Brake cleaner
- Copper grease
- Combination spanner #16
- Combination spanner #22
- Drive socket # 16
- Wheel impact socket #17
- Ratchet wrench
- Torque wrench
- Wheel chock

Buy tools

Replacement: anti roll bar links – MERCEDES-BENZ SL (R230). AUTODOC experts recommend:

- Replace the stabiliser links on MERCEDES-BENZ SL (R230) in pairs.
- The replacement procedure is identical for both stabiliser links on the same axle.
- All work should be done with the engine stopped.

REPLACEMENT: ANTI ROLL BAR LINKS – MERCEDES-BENZ SL (R230). TAKE THE FOLLOWING STEPS:

- 1 Secure the wheels with chocks.
- 2 Loosen the wheel mounting bolts. Use wheel impact socket #17.
- 3 Raise the rear of the car and secure on supports.
- 4 Unscrew the wheel bolts.



Replacement: anti roll bar links – MERCEDES-BENZ SL (R230). Tip:

- To avoid injury, hold up the wheel when unscrewing the bolts.

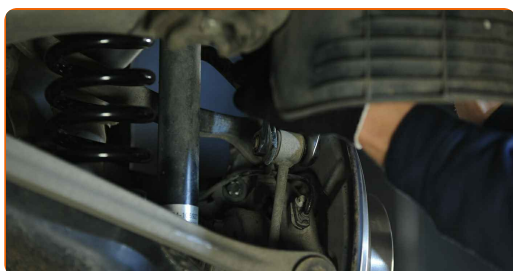
5 Remove the wheel.



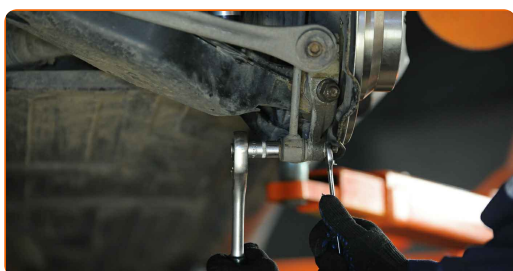
6 Clean the stabiliser link fasteners. Use a wire brush. Use WD-40 spray.



7 Unscrew the fastener connecting the stabilizer link to the stabilizer bar. Use a combination spanner #16. Use a combination spanner #22.

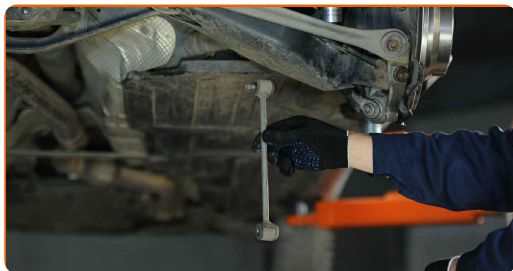


8 Unscrew the fasteners connecting the stabilizer link to the steering knuckle. Use a combination spanner #16. Use a drive socket #16. Use a ratchet wrench.

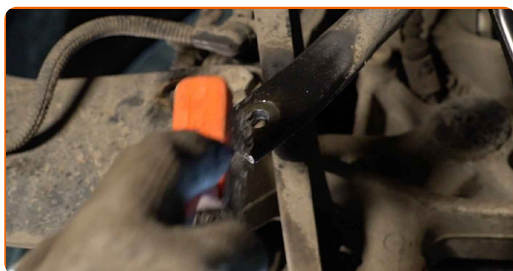


9 Remove the fastening bolt.

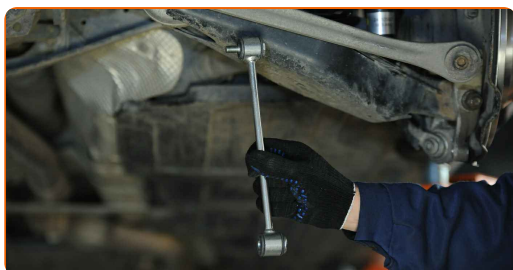
10 Remove the stabilizer rod.



11 Clean the mounting seats of the stabiliser link. Use a wire brush. Use WD-40 spray.

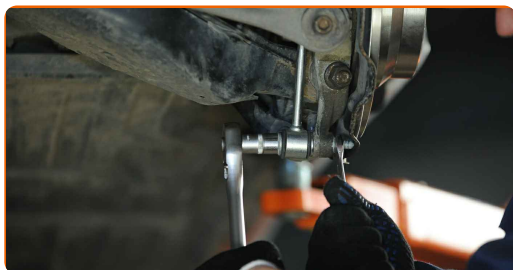


12 Install the transverse stabilizer link.

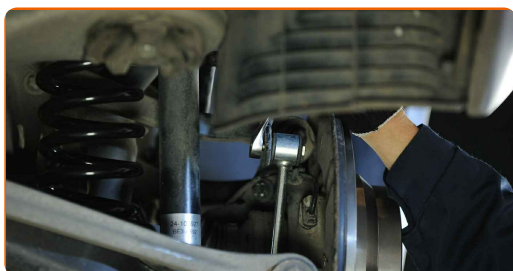


13 Install the fastening bolt.

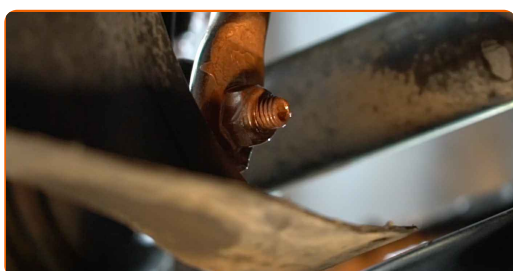
14 Tighten the fasteners connecting the stabilizer link to the steering knuckle. Use a combination spanner #16. Use a drive socket #16. Use a torque wrench. Tighten it to 50 Nm torque.



- 15** Tighten the fastener connecting the stabilizer link to the stabilizer bar. Use a combination spanner #16. Use a combination spanner #22. Use a torque wrench. Tighten it to 50 Nm torque.



- 16** Treat all joints of the stabiliser link. Use copper grease.



- 17** Treat the surface where the brake disc contacts the wheel rim. Use copper grease.



- 18** Clean the brake disk surface. Use a brake cleaner.

Replacement: anti roll bar links – MERCEDES-BENZ SL (R230). AUTODOC recommends:

- After applying the spray, wait a few minutes.

19 Install the wheel.



AUTODOC recommends:

- Important! Hold the wheel while screwing in the fastening bolts. MERCEDES-BENZ SL (R230)

20 Screw in the wheel bolts. Use wheel impact socket #17.

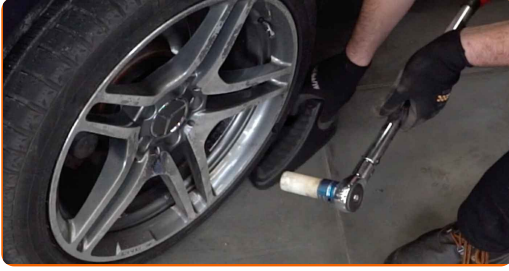


21 Lower the car and working in a cross order, tighten the wheel bolts. Use wheel impact socket #17. Use a torque wrench. Tighten it to 120 nm torque.



22

Remove the jacks and chocks.



WELL DONE! 

VIEW MORE TUTORIALS

AUTODOC – TOP QUALITY AND AFFORDABLE CAR PARTS ONLINE

AUTODOC MOBILE APP: GREAT DEALS AND CONVENIENT SHOPPING



A GREAT SELECTION OF SPARE PARTS FOR YOUR CAR

ANTI ROLL BAR LINKS: A WIDE SELECTION

DISCLAIMER:

The document contains only general recommendations that may be useful for you when you perform repair or replacement work. AUTODOC shall not be liable for any loss, injury, damage of property occurring in the repair or replacement process due to incorrect use or misinterpretation of the provided information.

AUTODOC shall not be liable for any possible mistakes and uncertainties in this guide. The information provided is for information purposes only and cannot replace advice from specialists.

AUTODOC shall not be liable for incorrect or hazardous usage of equipment, tools and car parts. AUTODOC strongly recommends to be careful and observe the safety rules when performing repair or replacement works. Remember: usage of low quality auto parts does not guarantee you the appropriate level of road safety.

© Copyright 2023 – All the contents of this website, in particular texts, photographs and graphics, are protected by copyright. All rights, including reproduction, publication, editing and translation rights, are reserved by AUTODOC GmbH.