



How to change mass air  
flow sensor on

**MERCEDES-BENZ S-  
Class Saloon (W220) –  
replacement guide**

## SIMILAR VIDEO TUTORIAL



This video shows the replacement procedure of a similar car part on another vehicle

### Important!

This replacement procedure can be used for:

MERCEDES-BENZ S-Class Saloon (W220) S 320 (220.065, 220.165), MERCEDES-BENZ S-Class Saloon (W220) S 280 (220.063, 220.163)

The steps may slightly vary depending on the car design.

This tutorial was created based on the replacement procedure for a similar car part on: MERCEDES-BENZ C-Class Saloon (W203) C 240 (203.061)

REPLACEMENT: MASS AIR FLOW SENSOR –  
 MERCEDES-BENZ S-CLASS SALOON (W220). TOOLS  
 YOU NEED:



- Electronic spray
- Crow bar
- Microfibre towel
- Fender cover

**Buy tools**

Replacement: mass air flow sensor – MERCEDES-BENZ S-Class Saloon (W220). AUTODOC experts recommend:

- Clear the trouble codes from the electronic control unit if necessary.
- Make sure that no dust or dirt gets into the air duct components and the throttle body.
- All work should be done with the engine stopped.

**REPLACEMENT: MASS AIR FLOW SENSOR – MERCEDES-BENZ S-CLASS SALOON (W220). TAKE THE FOLLOWING STEPS:**

**1** Open the bonnet.

**2** Use a fender protection cover to prevent damaging paintwork and plastic parts of the car.

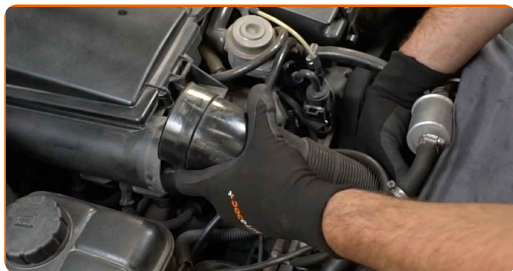
**3** Remove the engine cover.



**AUTODOC recommends:**

- Replacement: mass air flow sensor – MERCEDES-BENZ S-Class Saloon (W220). Do not use excessive force when removing the part as this may damage it.

**4** Remove the air intake hoses.



**5** Clean the air filter cover and housing.



**6** Remove the air filter housing.



**AUTODOC recommends:**

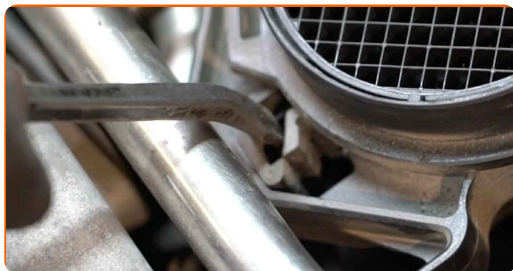
- Replacement: mass air flow sensor – MERCEDES-BENZ S-Class Saloon (W220). Do not use excessive force when removing the part as this may damage it.

**7** Detach the mass air flow sensor connector.



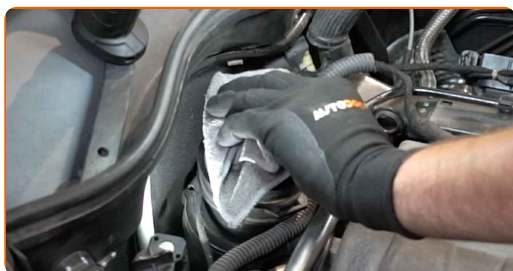
8

Release the mass air flow sensor retaining clips. Use a crowbar.



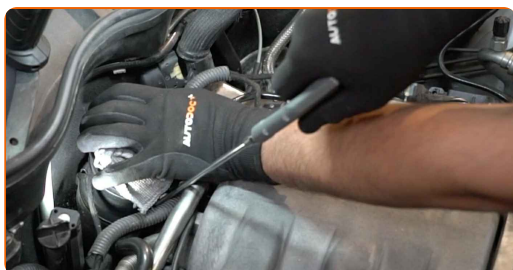
9

Cover the throttle body with a microfibre towel to prevent dust and dirt from getting into the system.



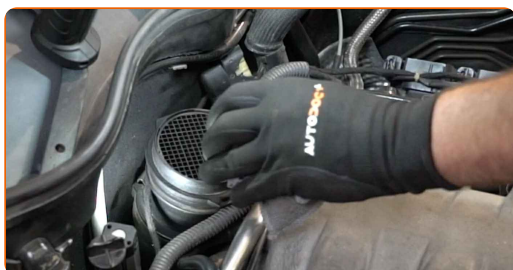
10

Clean the mounting seat of the mass air flow sensor.



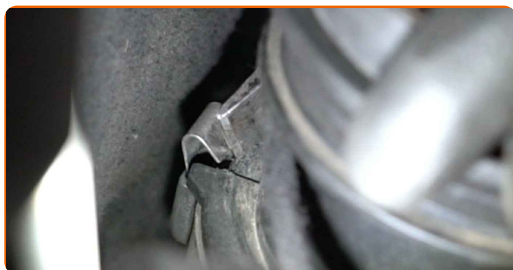
11

Remove the microfibre towel from the throttle body.

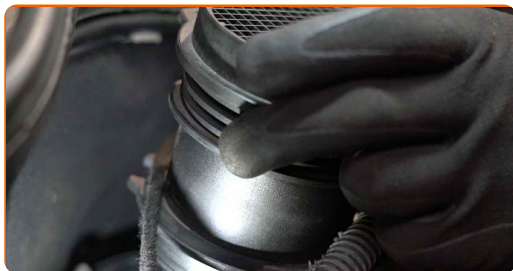


12

Release the mass air flow sensor retaining clips. Use a crowbar.



**13** Remove the mass air flow sensor.



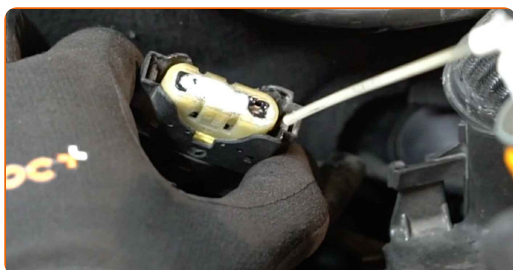
**14** Install a new mass air flow sensor. Make sure you hear a click indicating that it is locked in place.



**15** Lock the mass air flow sensor retaining clips.



**16** Treat the mass air flow sensor connector. Use dielectric grease.





**17** Attach the mass air flow sensor connector.



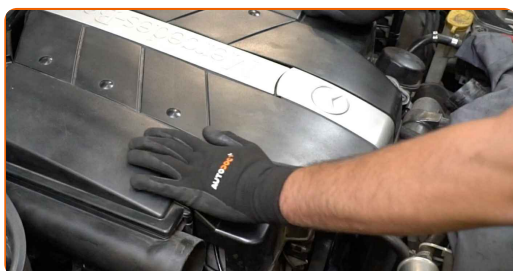
**18** Install the air filter housing.



**AUTODOC recommends:**

- Replacement: mass air flow sensor – MERCEDES-BENZ S-Class Saloon (W220).  
To avoid damaging the part during installation, do not use excessive force.

**19** Install the engine cover and secure it.



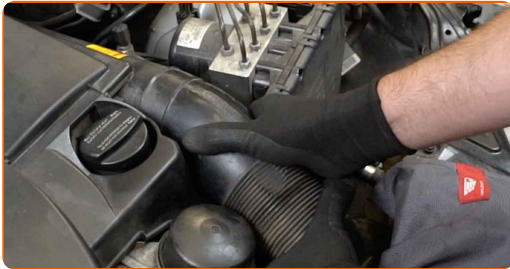


**AUTODOC recommends:**

- Make sure the engine cover is properly seated. It should not be displaced with respect to the guiding fasteners and the throttle body air intake hose.
- Replacement: mass air flow sensor – MERCEDES-BENZ S-Class Saloon (W220). Do not use excessive force during installation. This may damage the part.

**20**

Reinstall the air intake hoses.



**21**

Run the engine for a few minutes. This is necessary in order to make sure that the component operates properly.

**22**

Shut off the engine.

**23**

Remove the fender protection cover.

**24**

Close the hood.

**WELL DONE!** 

**VIEW MORE TUTORIALS**

# AUTODOC – TOP QUALITY AND AFFORDABLE CAR PARTS ONLINE

**AUTODOC MOBILE APP: GREAT DEALS AND CONVENIENT SHOPPING**



**+ AUTODOC**

GET IT ON  
 **Google Play**

 **Download on the App Store**

**Download**

**A GREAT SELECTION OF SPARE PARTS FOR YOUR CAR**

**MASS AIR FLOW SENSOR: A WIDE SELECTION**

## **DISCLAIMER:**

The document contains only general recommendations that may be useful for you when you perform repair or replacement work. AUTODOC shall not be liable for any loss, injury, damage of property occurring in the repair or replacement process due to incorrect use or misinterpretation of the provided information.

AUTODOC shall not be liable for any possible mistakes and uncertainties in this guide. The information provided is for information purposes only and cannot replace advice from specialists.

AUTODOC shall not be liable for incorrect or hazardous usage of equipment, tools and car parts. AUTODOC strongly recommends to be careful and observe the safety rules when performing repair or replacement works. Remember: usage of low quality auto parts does not guarantee you the appropriate level of road safety.

© Copyright 2023 – All the contents of this website, in particular texts, photographs and graphics, are protected by copyright. All rights, including reproduction, publication, editing and translation rights, are reserved by AUTODOC SE.