



How to change front
brake pad wear sensor on
**MERCEDES-BENZ S-
Class Coupe (C216)** –
replacement guide

SIMILAR VIDEO TUTORIAL



This video shows the replacement procedure of a similar car part on another vehicle

i Important!

This replacement procedure can be used for:

MERCEDES-BENZ S-Class Coupe (C216) CL 500 (216.373), MERCEDES-BENZ S-Class Coupe (C216) CL 500 4-matic (216.394), MERCEDES-BENZ S-Class Coupe (C216) CL 500 (216.371), MERCEDES-BENZ S-Class Coupe (C216) CL 600 (216.376), MERCEDES-BENZ S-Class Coupe (C216) CL 500 4-matic (216.386)

The steps may slightly vary depending on the car design.

This tutorial was created based on the replacement procedure for a similar car part on: MERCEDES-BENZ C-Class Saloon (W204) C 220 CDI (204.008)

**REPLACEMENT: BRAKE PAD WEAR SENSOR –
MERCEDES-BENZ S-CLASS COUPE (C216). TOOLS YOU
MIGHT NEED:**



- Wire brush
- Nylon cleaning brush
- WD-40 spray
- Electronic spray
- Brake cleaner
- Anti-squeal paste
- Ceramic grease
- Torque wrench
- Combination spanner #17
- Drive socket # 13
- Wheel impact socket #17
- Ratchet wrench
- Long nose pliers
- Brake caliper wind back tool
- Crow bar
- Wheel chock

Buy tools

Replacement: brake pad wear sensor – MERCEDES-BENZ S-Class Coupe (C216). Tip from AUTODOC:

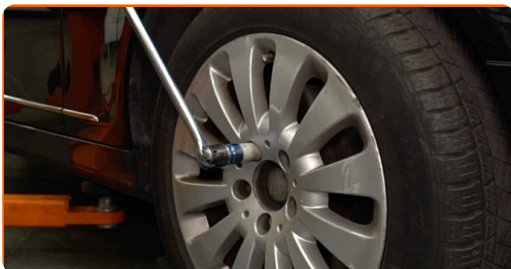
- The replacement procedure is identical for both brake pad wear sensors on the same axle.
- The wear sensors should be replaced together with the brake pads.
- Please note: all work on the car – MERCEDES-BENZ S-Class Coupe (C216) – should be done with the engine switched off.

CARRY OUT REPLACEMENT IN THE FOLLOWING ORDER:

1 Open the bonnet. Unscrew the brake fluid reservoir cap.

2 Secure the wheels with chocks.

3 Loosen the wheel mounting bolts. Use wheel impact socket #17.



4 Raise the car.

Replacement: brake pad wear sensor – MERCEDES-BENZ S-Class Coupe (C216). AUTODOC recommends:

- If you are using a jack, make sure it rests on a flat surface without any unevenness.
- Be sure to additionally secure the car with jack stands.

5

Unscrew the wheel bolts.



AUTODOC recommends:

- Warning! To avoid injury, hold the wheel while unscrewing the fastening bolts. MERCEDES-BENZ S-Class Coupe (C216)

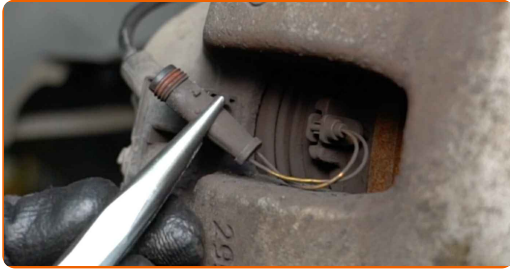
6

Remove the wheel.



7

Detach the connector of the brake pad wear sensor. Use long nose pliers.



8

Spread the brake pads. Use a crowbar.

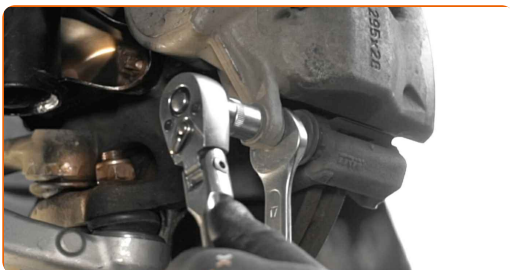


9

Clean the brake caliper fasteners. Use a wire brush. Use WD-40 spray.

10

Unscrew the brake caliper fasteners. Use a combination spanner #17. Use a drive socket #13. Use a ratchet wrench.



11

Remove the fastening bolts.



12

Remove the brake caliper.

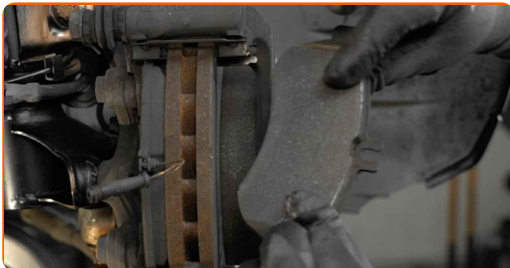


Replacement: brake pad wear sensor – MERCEDES-BENZ S-Class Coupe (C216). Tip:

- Tie the caliper to the suspension or to the body with a wire without disconnecting from the brake hose to prevent depressurization of the brake system.
- Make sure that the brake caliper is not hanging on the brake hose.
- Don't press the brake pedal after the brake caliper has been removed. As a result, the piston can fall out from the brake cylinder, and brake fluid leakage and depressurization of the system may occur.

13

Remove the brake pads.



14

Clean the brake caliper bracket from dirt and dust. Use a wire brush. Use a brake cleaner.

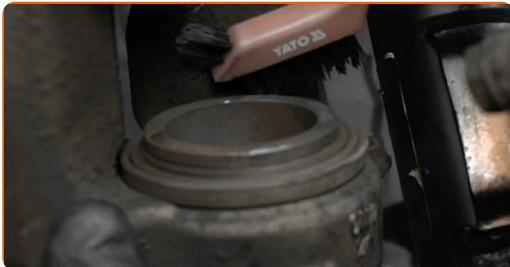


AUTODOC recommends:

- After applying the spray, wait a few minutes.
- Check the brake caliper bracket, brake caliper guide pins and boots. Clean them. Replace, if necessary.

15

Treat the brake caliper piston. Use a nylon cleaning brush. Use a brake cleaner.



AUTODOC recommends:

- Replacement: brake pad wear sensor – MERCEDES-BENZ S-Class Coupe (C216). After applying the spray, wait a few minutes.

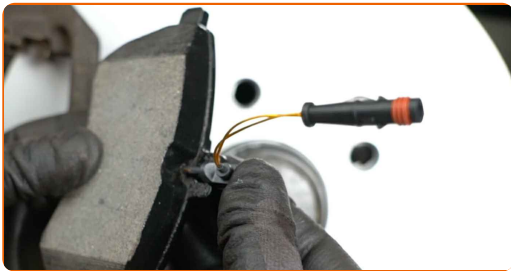
16

Press in the brake caliper piston. Use brake caliper wind back tool.



17

Attach the new wear sensor to the new pad.



18

Treat the brake pads in the area where their surface comes into contact with the brake caliper bracket. Use anti-squeal paste.

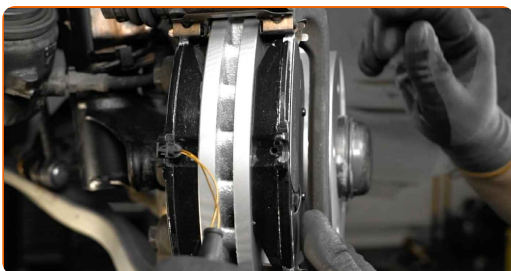


AUTODOC recommends:

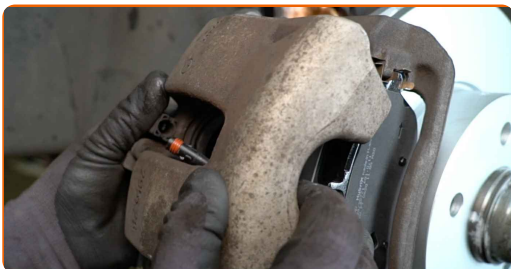
- Make sure the disc surface is clean before installing the pads.

19

Install the brake pads.



20 Install the brake caliper and fix it.



21 Install the fastening bolts.



22 Tighten the brake caliper fasteners. Use a combination spanner #17. Use a drive socket #13. Use a torque wrench. Tighten it to 34 Nm torque.



23 Treat the brake pad wear sensor plug. Use dielectric grease.



24 Attach the connector of the brake pad wear sensor.



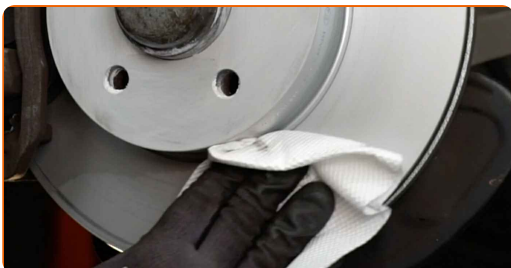
25 Clean the wheel rim mounting seat. Use a wire brush.



26 Treat the surface where the brake disc contacts the wheel rim. Use ceramic grease.



27 Clean the brake disk surface. Use a brake cleaner.



AUTODOC recommends:

- After applying the spray, wait a few minutes.

28 Install the wheel.



AUTODOC recommends:

- Important! Hold the wheel while screwing in the fastening bolts. MERCEDES-BENZ S-Class Coupe (C216)

29

Screw in the wheel bolts. Use wheel impact socket #17.



30

Lower the car and working in a cross order, tighten the wheel bolts. Use wheel impact socket #17. Use a torque wrench. Tighten it to 130 Nm torque.



31

Remove the jacks and chocks.



Replacement: brake pad wear sensor – MERCEDES-BENZ S-Class Coupe (C216). AUTODOC experts recommend:

- Without starting the engine, press the brake pedal several times until you feel significant resistance.
- Check the brake fluid level in the expansion tank and refill if necessary.

32

Tighten the brake fluid reservoir cap. Close the hood.

WELL DONE! 

[VIEW MORE TUTORIALS](#)

AUTODOC – TOP QUALITY AND AFFORDABLE CAR PARTS ONLINE

AUTODOC MOBILE APP: GREAT DEALS AND CONVENIENT SHOPPING



+ AUTODOC

GET IT ON
 **Google Play**

Download on the
 **App Store**

Download

A GREAT SELECTION OF SPARE PARTS FOR YOUR CAR

BRAKE PAD WEAR SENSOR: A WIDE SELECTION

DISCLAIMER:

The document contains only general recommendations that may be useful for you when you perform repair or replacement work. AUTODOC shall not be liable for any loss, injury, damage of property occurring in the repair or replacement process due to incorrect use or misinterpretation of the provided information.

AUTODOC shall not be liable for any possible mistakes and uncertainties in this guide. The information provided is for information purposes only and cannot replace advice from specialists.

AUTODOC shall not be liable for incorrect or hazardous usage of equipment, tools and car parts. AUTODOC strongly recommends to be careful and observe the safety rules when performing repair or replacement works. Remember: usage of low quality auto parts does not guarantee you the appropriate level of road safety.

© Copyright 2022 – All the contents of this website, in particular texts, photographs and graphics, are protected by copyright. All rights, including reproduction, publication, editing and translation rights, are reserved by AUTODOC GmbH.