



How to change rear  
brake discs on **Mercedes**  
**W201** – replacement  
guide

## VIDEO TUTORIAL



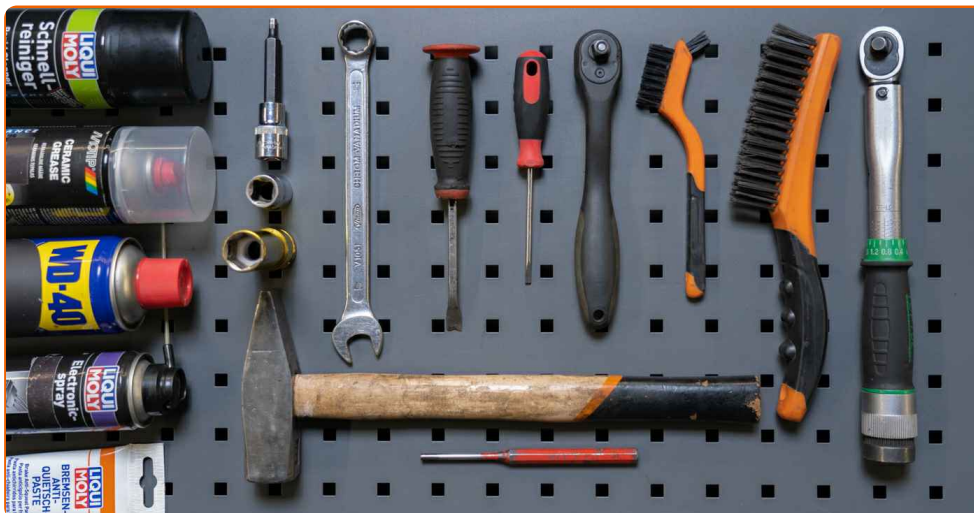
### Important!

This replacement procedure can be used for:

MERCEDES-BENZ 190 (W201) E 1.8 (201.018), MERCEDES-BENZ 190 (W201) 2.0 (201.022), MERCEDES-BENZ 190 (W201) E 2.0 (201.024), MERCEDES-BENZ 190 (W201) 2.0 (201.023), MERCEDES-BENZ 190 (W201) E 2.0, MERCEDES-BENZ 190 (W201) E 2.3, MERCEDES-BENZ 190 (W201) E 2.3 (201.028), MERCEDES-BENZ 190 (W201) E 2.6, MERCEDES-BENZ 190 (W201) D 2.0 (201.122), MERCEDES-BENZ 190 (W201) D 2.5 (201.126), MERCEDES-BENZ 190 (W201) Turbo-D 2.5 (201.128), MERCEDES-BENZ 190 (W201) E 2.6 (201.029), MERCEDES-BENZ 190 (W201) 2.3, MERCEDES-BENZ 190 (W201) 2.3 E, MERCEDES-BENZ 190 (W201) 2.6

The steps may slightly vary depending on the car design.

**REPLACEMENT: BRAKE DISCS – MERCEDES W201.  
LIST OF THE TOOLS YOU'LL NEED:**



- Wire brush
- Nylon cleaning brush
- WD-40 spray
- Brake cleaner
- All-purpose cleaning spray
- Ceramic grease
- Anti-squeal paste
- Torque wrench
- Combination spanner #17
- Drive socket # 17
- HEX bit No.H5
- Wheel impact socket #17
- Ratchet wrench
- Flat Screwdriver
- Pin punch
- Hammer
- Tap wrench
- Crow bar
- Wheel chock

**BUY TOOLS**

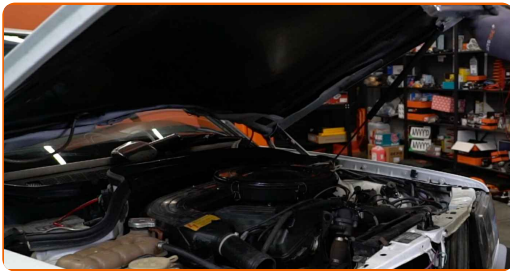
Replacement: brake discs – Mercedes W201. Tip from AUTODOC experts:

- Replace the brake disks on the car Mercedes W201 in complete set for each axis. Regardless of the state of components. This will ensure even braking.
- The replacement procedure is identical for both brake disks on the same axle.
- Please note: all work on the car – Mercedes W201 – should be done with the engine switched off.

**CARRY OUT REPLACEMENT IN THE FOLLOWING ORDER:**

1

Open the bonnet.



2

Unscrew the brake fluid reservoir cap.

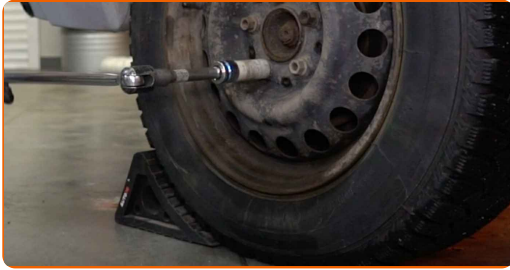


3

Secure the wheels with chocks.

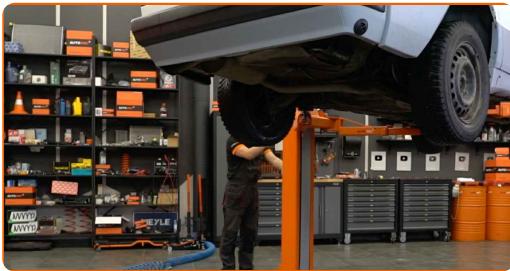
4

Loosen the wheel bolts. Use wheel impact socket #17. Use a tap wrench.



5

Raise the car.

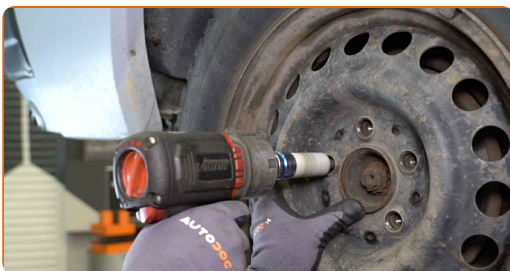


Replacement: brake discs – Mercedes W201. AUTODOC recommends:

- If you are using a jack, make sure it rests on a flat surface without any unevenness.
- Be sure to additionally secure the car with jack stands.

6

Unscrew the wheel bolts.



**AUTODOC recommends:**

- Warning! To avoid injury, hold the wheel while unscrewing the fastening bolts.  
Mercedes W201

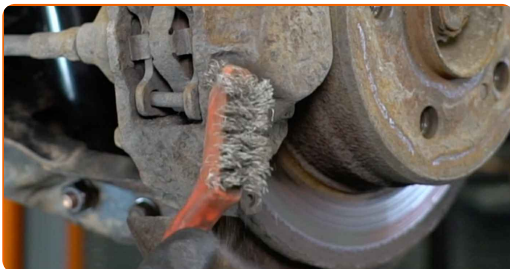
7

Remove the wheel.



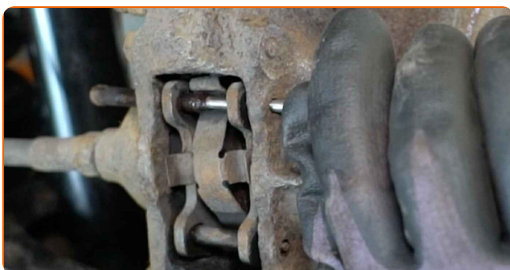
8

Clean the brake pad guide pins. Use a wire brush. Use all-purpose cleaning spray.



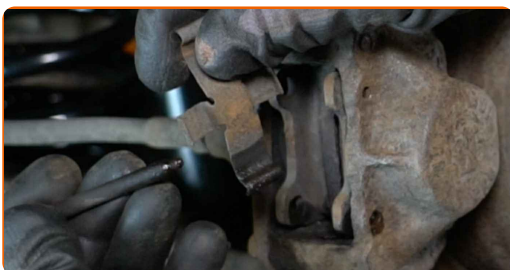
9

Remove the brake pad guide pins. Use a pin punch. Use a hammer.

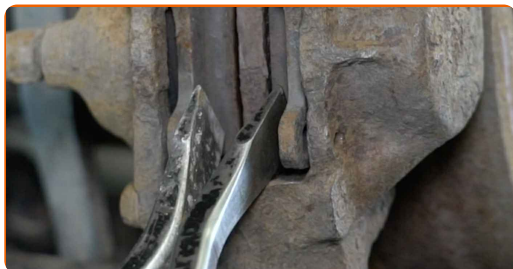


10

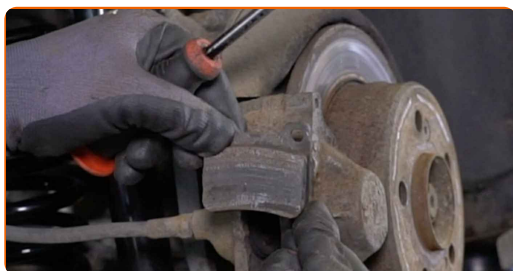
Remove the retaining spring of the brake pads.



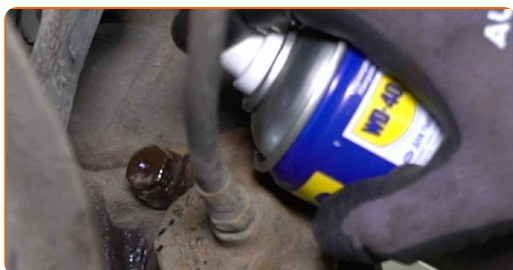
**11** Spread the brake pads. Use a crowbar (2 pieces).



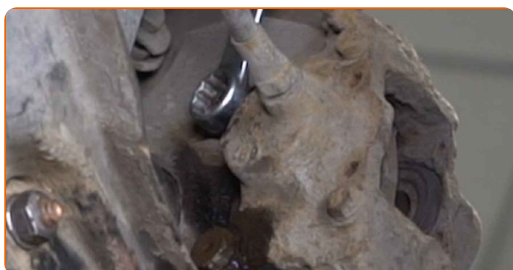
**12** Remove the brake pads.



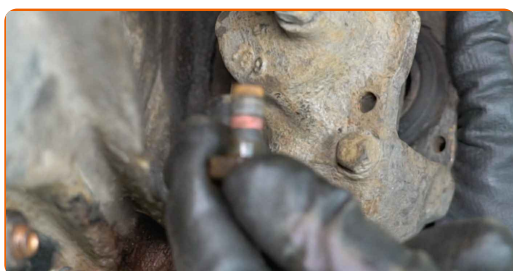
**13** Clean the brake caliper fasteners. Use a wire brush. Use WD-40 spray.



**14** Unscrew the brake caliper fasteners. Use a combination spanner #17.

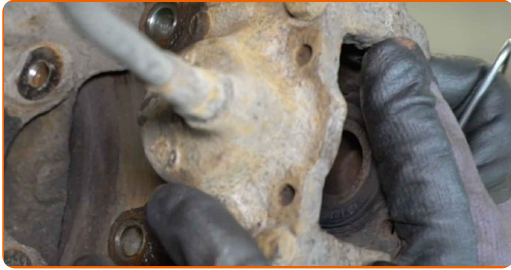


**15** Remove the fastening bolts.



**16**

Remove the brake caliper.



**AUTODOC recommends:**

- Tie the caliper to the suspension or to the body with a wire without disconnecting from the brake hose to prevent depressurization of the brake system.
- Make sure that the brake caliper is not hanging on the brake hose.
- Don't press the brake pedal after the brake caliper has been removed. As a result, the piston can fall out from the brake cylinder, and brake fluid leakage and depressurization of the system may occur.

**17**

Clean the brake disc fastener. Use a wire brush. Use WD-40 spray.





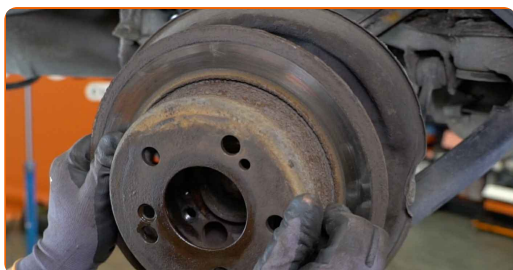
**18** Unscrew the brake disc fasteners. Use HEX No.H5. Use a ratchet wrench.



**19** Remove the fastening bolt.



**20** Remove the brake disc.



**21** Clean the wheel hub. Use a wire brush.



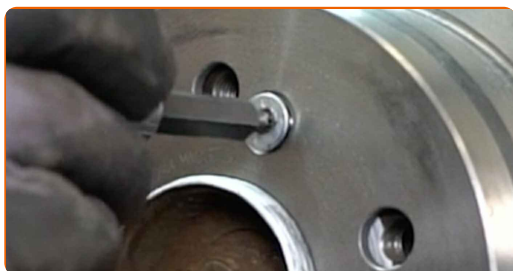
**22** Treat the contacting surface. Use ceramic grease.



**23** Install a new brake disc.



**24** Install the fastening bolt.



**25** Tighten the brake disc fasteners. Use HEX No.H5. Use a torque wrench. Tighten it to 10 Nm torque.



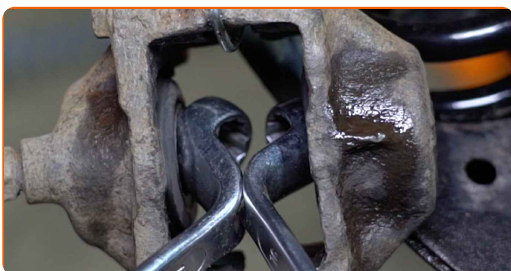
**26** Set the parking brake adjuster in the correct position. Use a flat screwdriver.



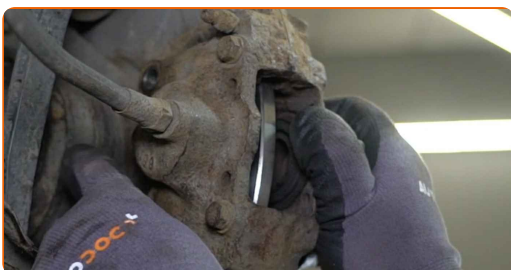
**27** Treat the brake caliper pistons. Use a nylon cleaning brush. Use a brake cleaner.



**28** Wind back the brake caliper pistons.



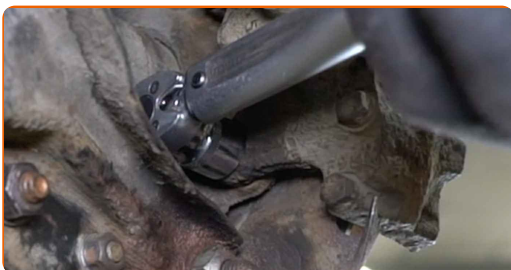
**29** Install the brake caliper and fasten it.



**30** Install the fastening bolts.



**31** Tighten the brake caliper fasteners. Use a drive socket #17. Use a torque wrench. Tighten it to 65 Nm torque.



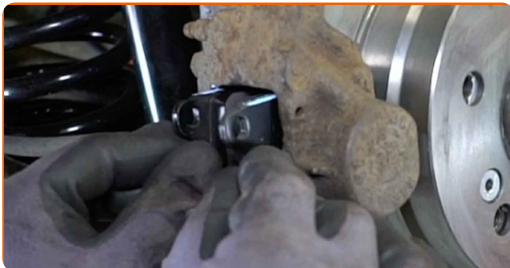
- 32** Treat the brake pads in the area where their surface comes into contact with the brake caliper bracket. Use anti-squeal paste.



Replacement: brake discs – Mercedes W201. Professionals recommend:

- Make sure the disc surface is clean before installing the pads.

- 33** Install the brake pads.



- 34** Install the retaining spring of the brake pads.



**35** Install the brake pad guide pins. Use a pin punch. Use a hammer.



**36** Clean the brake disk surface. Use a brake cleaner.



**37** Treat the surface where the brake disc contacts the wheel rim. Use ceramic grease.



**38** Install the wheel.



Replacement: brake discs – Mercedes W201. AUTODOC experts recommend:

- To avoid injury, hold up the wheel when screwing in the fastening bolts.

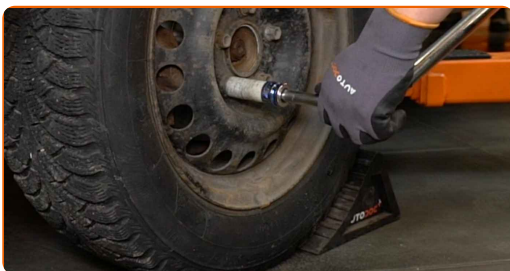
**39**

Screw in the wheel bolts. Use wheel impact socket #17. Use a ratchet wrench.



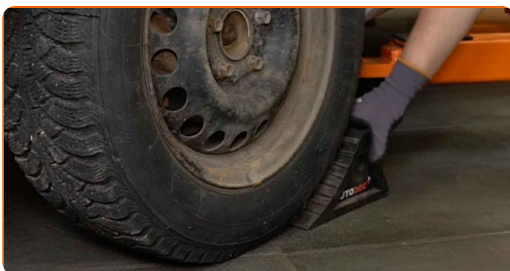
**40**

Lower the car and working in a cross order, tighten the wheel bolts. Use wheel impact socket #17. Use a torque wrench. Tighten it to 110 Nm torque.



**41**

Remove the jacks and chocks.



**Replacement: brake discs – Mercedes W201. Tip from AUTODOC experts:**

- Without starting the engine, press the brake pedal several times until you feel significant resistance.
- Check the brake fluid level in the expansion tank and top up if necessary.

42

Tighten the brake fluid reservoir cap.



43

Close the bonnet.



**WELL DONE!** 

**VIEW MORE TUTORIALS**

# AUTODOC – TOP QUALITY AND AFFORDABLE CAR PARTS ONLINE

**AUTODOC MOBILE APP: GREAT DEALS AND CONVENIENT SHOPPING**



**+ AUTODOC**

GET IT ON  **Google Play**

 **Download on the App Store**

**Download**

**A GREAT SELECTION OF SPARE PARTS FOR YOUR CAR**

**BUY SPARE PARTS FOR MERCEDES**

**BRAKE DISCS: A WIDE SELECTION**



**CHOOSE CAR PARTS FOR MERCEDES W201**

**BRAKE DISCS FOR MERCEDES: BUY NOW**

**BRAKE DISCS FOR MERCEDES W201: THE BEST DEALS & OFFERS**

### **DISCLAIMER:**

The document contains only general recommendations that may be useful for you when you perform repair or replacement work. AUTODOC shall not be liable for any loss, injury, damage of property occurring in the repair or replacement process due to incorrect use or misinterpretation of the provided information.

AUTODOC shall not be liable for any possible mistakes and uncertainties in this guide. The information provided is for information purposes only and cannot replace advice from specialists.

AUTODOC shall not be liable for incorrect or hazardous usage of equipment, tools and car parts. AUTODOC strongly recommends to be careful and observe the safety rules when performing repair or replacement works. Remember: usage of low quality auto parts does not guarantee you the appropriate level of road safety.

© Copyright 2023 – All the contents of this website, in particular texts, photographs and graphics, are protected by copyright. All rights, including reproduction, publication, editing and translation rights, are reserved by AUTODOC SE.