



How to change ignition
coil on **Mercedes W201** –
replacement guide

VIDEO TUTORIAL

** Important!**

This replacement procedure can be used for:

MERCEDES-BENZ 190 (W201) E 1.8 (201.018), MERCEDES-BENZ 190 (W201) E 2.0 (201.024), MERCEDES-BENZ 190 (W201) 2.0 (201.023), MERCEDES-BENZ 190 (W201) E 2.0, MERCEDES-BENZ 190 (W201) E 2.3, MERCEDES-BENZ 190 (W201) E 2.3 (201.028), MERCEDES-BENZ 190 (W201) 2.3, MERCEDES-BENZ 190 (W201) 2.3 E

The steps may slightly vary depending on the car design.

REPLACEMENT: IGNITION COIL – MERCEDES W201.
 TOOLS YOU'LL NEED:



- Wire brush
- High-temperature anti-seize lubricant
- Dielectric grease
- Torque wrench
- Combination spanner #10
- Drive socket # 10
- Spark plug socket # 16
- Ratchet wrench
- Phillips screwdriver
- Crow bar
- Fender cover

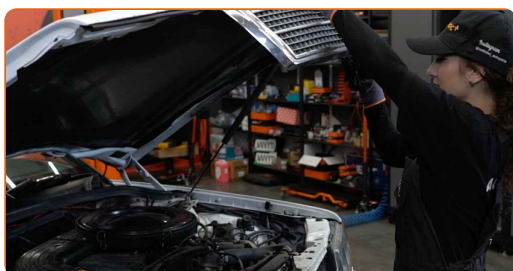
BUY TOOLS

Replacement: ignition coil – Mercedes W201. Tip from AUTODOC:

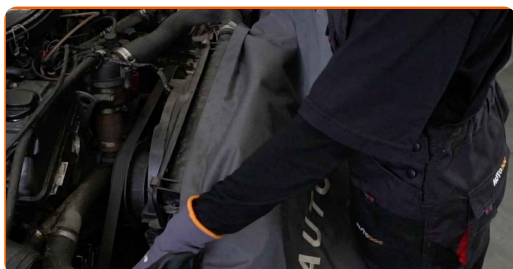
- Warning! Shut down the engine before starting any work – Mercedes W201.

CARRY OUT REPLACEMENT IN THE FOLLOWING ORDER:

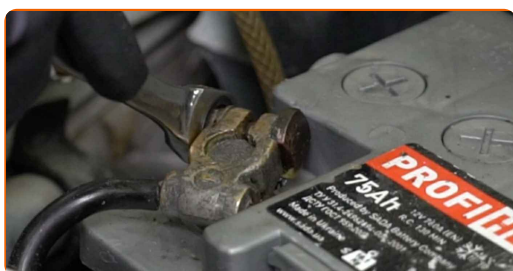
1 Open the bonnet.



2 Use a fender protection cover to prevent damaging paintwork and plastic parts of the car.



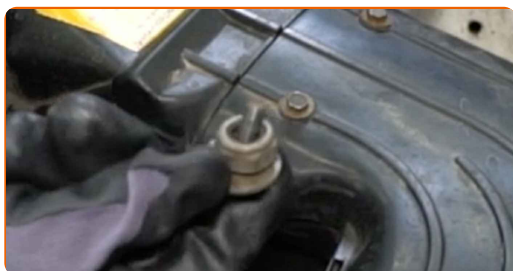
3 Disconnect the earth cable terminal from the battery. Use a combination spanner #10.



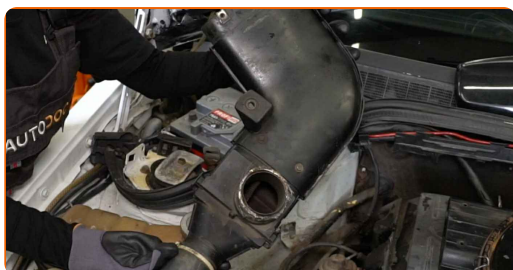
4 Unscrew the inlet pipe fasteners. Use a Phillips screwdriver. Use a drive socket #10. Use a ratchet wrench.



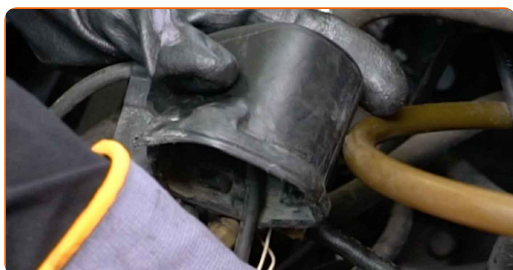
5 Remove the fastening bolts.



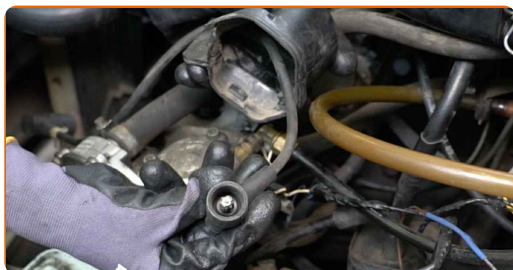
6 Remove the inlet pipe.



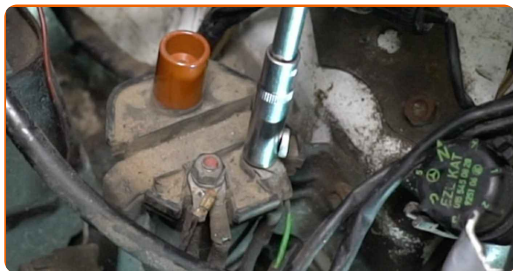
7 Remove the ignition coil cover.



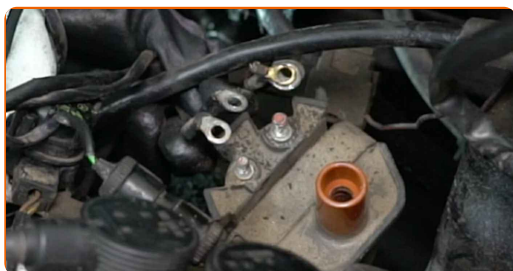
8 Disconnect the high tension cable from the ignition coil.



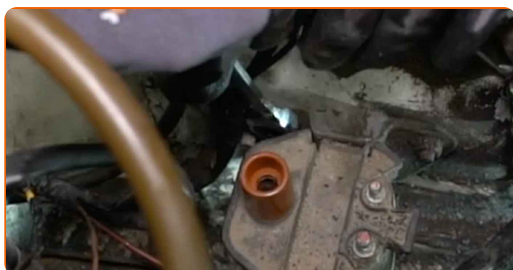
9 Unscrew the fasteners of the ignition coil terminals. Use a drive socket #10. Use a ratchet wrench.



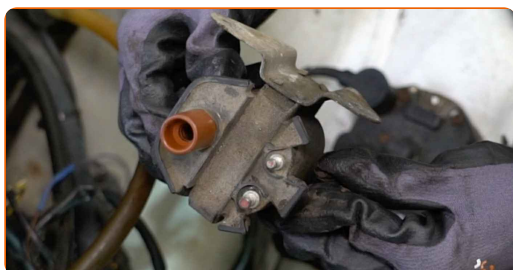
10 Disconnect the terminals from the ignition coil.



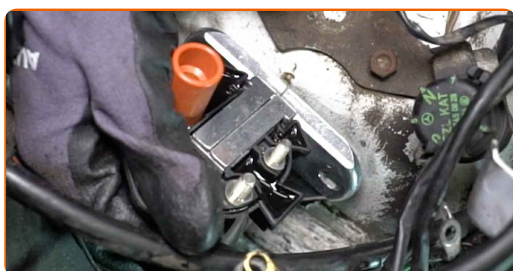
11 Unscrew the ignition coil fasteners. Use a combination spanner #10.



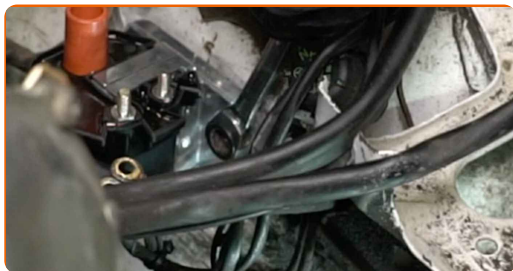
12 Remove the ignition coil.



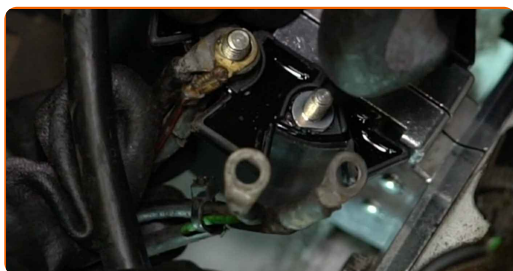
13 Install a new ignition coil.



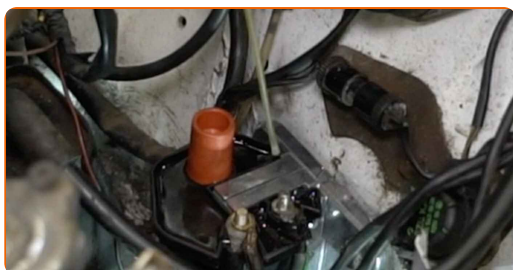
14 Screw in the ignition coil fasteners. Use a combination spanner #10.



15 Connect the terminals to the ignition coil.



16 Treat the ignition coil terminals. Use dielectric grease.



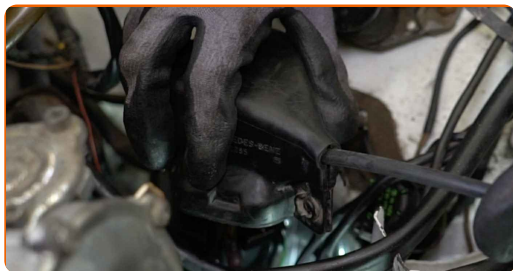
17 Screw in the ignition coil terminals. Use a drive socket #10. Use a ratchet wrench.



18 Connect the high tension cable to the ignition coil.



19 Fit the ignition coil cover.



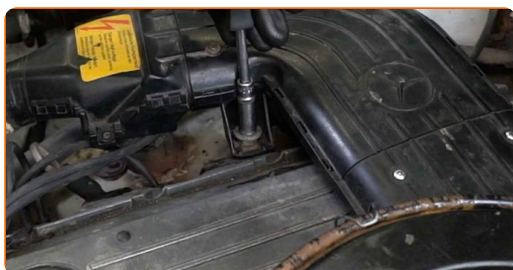
20 Attach the inlet pipe.



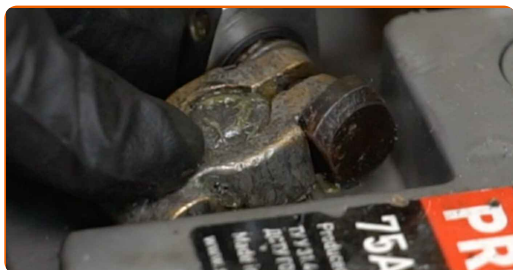
21 Install the fastening bolts.



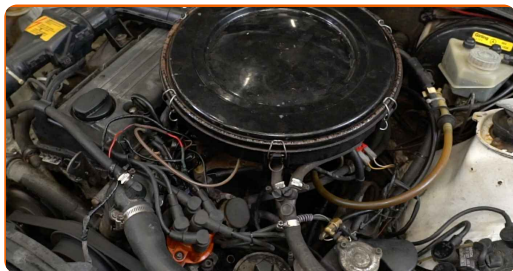
22 Screw in the inlet pipe fasteners. Use a Phillips screwdriver. Use a drive socket #10. Use a ratchet wrench.



23 Connect the earth cable terminal to the battery.

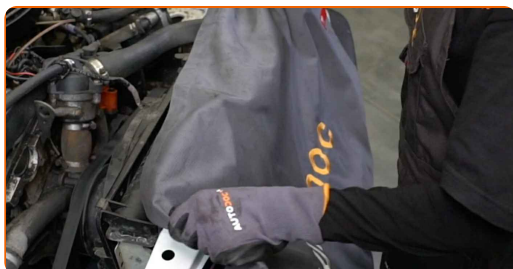


24 Run the engine for a few minutes. This is necessary in order to make sure that the component operates properly.



25 Shut off the engine.

26 Remove the fender protection cover.



27 Close the bonnet.



WELL DONE! 

VIEW MORE TUTORIALS

AUTODOC – TOP QUALITY AND AFFORDABLE CAR PARTS ONLINE

AUTODOC MOBILE APP: GREAT DEALS AND CONVENIENT SHOPPING



+ AUTODOC

GET IT ON  **Google Play**

 **Download on the App Store**

Download

A GREAT SELECTION OF SPARE PARTS FOR YOUR CAR

BUY SPARE PARTS FOR MERCEDES

IGNITION COIL: A WIDE SELECTION

CHOOSE CAR PARTS FOR MERCEDES W201

IGNITION COIL FOR MERCEDES: BUY NOW

IGNITION COIL FOR MERCEDES W201: THE BEST DEALS & OFFERS

DISCLAIMER:

The document contains only general recommendations that may be useful for you when you perform repair or replacement work. AUTODOC shall not be liable for any loss, injury, damage of property occurring in the repair or replacement process due to incorrect use or misinterpretation of the provided information.

AUTODOC shall not be liable for any possible mistakes and uncertainties in this guide. The information provided is for information purposes only and cannot replace advice from specialists.

AUTODOC shall not be liable for incorrect or hazardous usage of equipment, tools and car parts. AUTODOC strongly recommends to be careful and observe the safety rules when performing repair or replacement works. Remember: usage of low quality auto parts does not guarantee you the appropriate level of road safety.

© Copyright 2023 – All the contents of this website, in particular texts, photographs and graphics, are protected by copyright. All rights, including reproduction, publication, editing and translation rights, are reserved by AUTODOC SE.