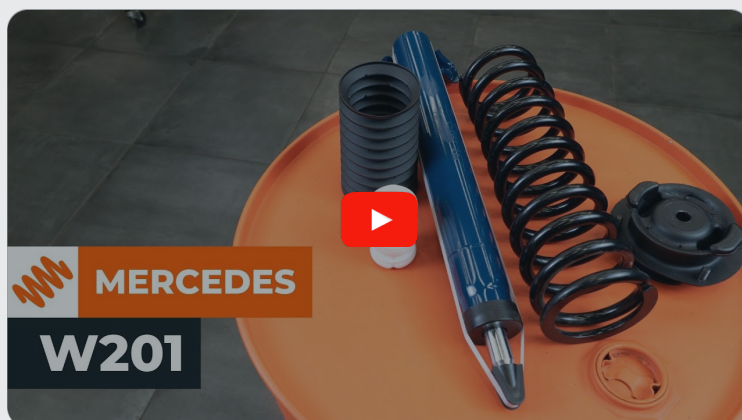




How to change front
suspension strut on
Mercedes W201 –
replacement guide

VIDEO TUTORIAL

** Important!**

This replacement procedure can be used for:

MERCEDES-BENZ 190 (W201) E 1.8 (201.018), MERCEDES-BENZ 190 (W201) 2.0 (201.023), MERCEDES-BENZ 190 (W201) E 2.0 (201.024), MERCEDES-BENZ 190 (W201) D 2.0 (201.122)

The steps may slightly vary depending on the car design.

REPLACEMENT: SUSPENSION STRUT – MERCEDES W201. TOOLS YOU NEED:



- Wire brush
- WD-40 spray
- All-purpose cleaning spray
- Ceramic grease
- Torque wrench
- Combination spanner #13
- Combination spanner #19
- Combination spanner #22
- Drive socket # 13
- Drive socket # 19
- Drive socket # 22
- Shock absorber socket # 19
- Shock absorber socket # 22
- HEX bit no.H6
- HEX bit no.H7
- Wheel impact socket #17
- Ratchet wrench
- Tap wrench
- Crow bar
- Strut spring compressor
- Hydraulic transmission jack
- Fender cover
- Wheel chock

BUY TOOLS

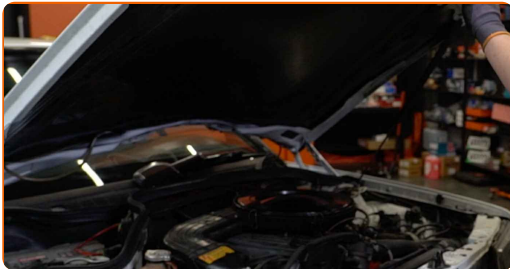
Replacement: suspension strut – Mercedes W201. Tip from AUTODOC experts:

- Both shock struts of the front suspension should be replaced simultaneously.
- The replacement procedure is identical for the left and right shock struts of the front suspension.
- All work should be done with the engine stopped.

REPLACEMENT: SUSPENSION STRUT – MERCEDES W201. RECOMMENDED SEQUENCE OF STEPS:

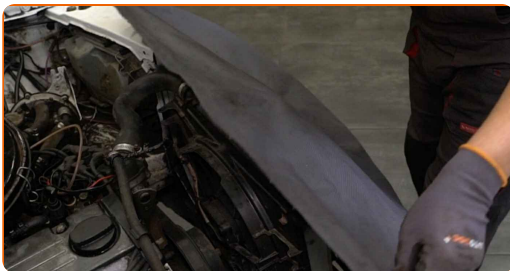
1

Open the bonnet.

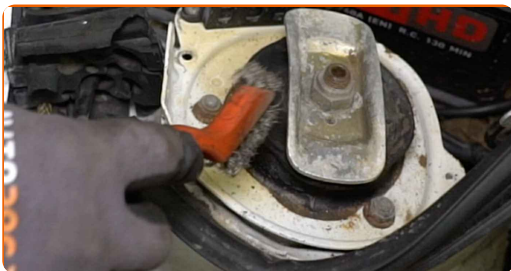


2

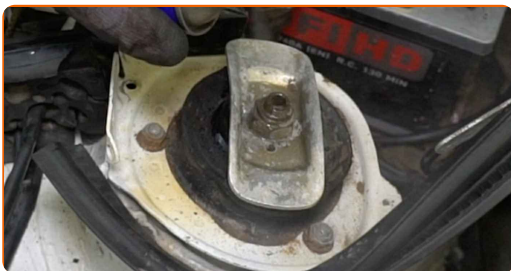
Use a fender protection cover to prevent damaging paintwork and plastic parts of the car.



3 Clean the fasteners of the shock strut upper mount. Use a wire brush. Use WD-40 spray.



4 Clean the fastener of the suspension strut piston rod. Use a wire brush. Use WD-40 spray.



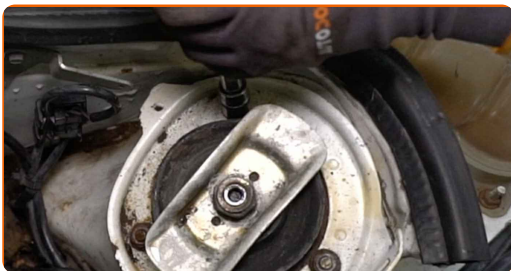
5 Loosen the fastener of the strut piston rod. Use a special drive socket to remove the shock absorber # 22. Use HEX No.H7. Use a ratchet wrench.



AUTODOC recommends:

- Don't unscrew it completely.

6 Loosen the fasteners of the upper strut mount. Use a drive socket #13. Use a ratchet wrench.

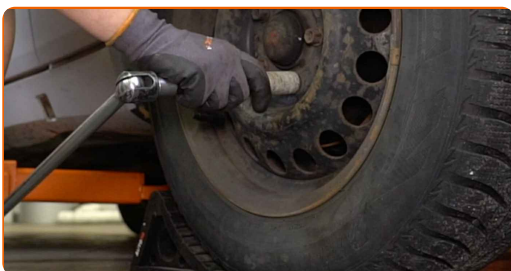


Replacement: suspension strut – Mercedes W201. Tip:

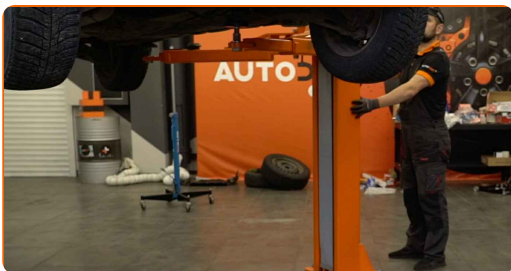
- Don't unscrew it completely.

7 Secure the wheels with chocks.

8 Loosen the wheel bolts. Use wheel impact socket #17. Use a tap wrench.



9 Raise the car.

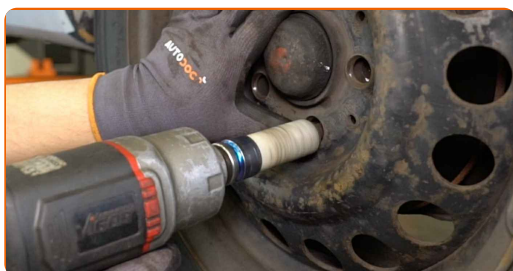


AUTODOC recommends:

- If you are using a jack, make sure it rests on a flat surface without any unevenness.
- Be sure to additionally secure the car with jack stands.

10

Unscrew the wheel bolts.

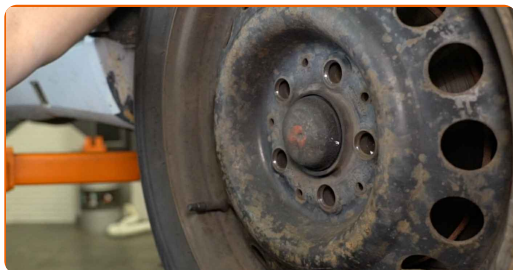


AUTODOC recommends:

- Important! Hold the wheel while unscrewing the fastening bolts. Mercedes W201

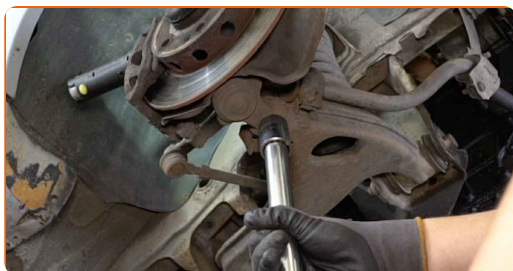
11

Remove the wheel.



12

Support the steering knuckle. Use a hydraulic transmission jack.

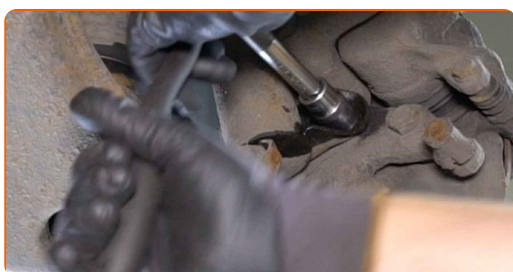


13 Disconnect the wiring from the strut.

14 Clean the fasteners connecting the shock strut to the steering knuckle. Use a wire brush. Use WD-40 spray.

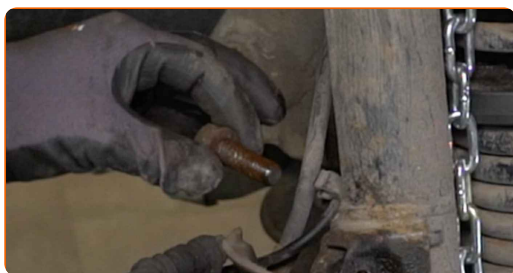


15 Unscrew the lower suspension strut fasteners. Use a combination spanner #19. Use a drive socket #19. Use a ratchet wrench.



16 Unscrew the fastener of the suspension strut piston rod.

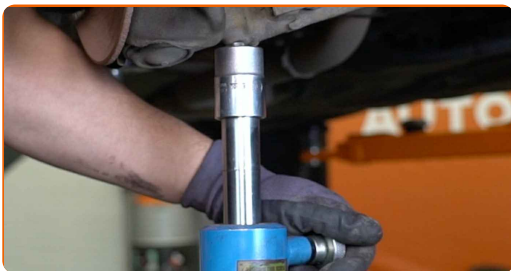
17 Remove the fastening bolts.



18 Detach the strut from the steering knuckle. Use a crowbar.



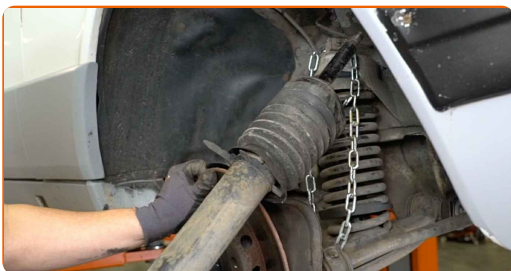
19 Lower the hydraulic transmission jack by 10-15 cm.



AUTODOC recommends:

- Lower the hydraulic transmission jack smoothly, without jerks, to avoid damaging assemblies and mechanisms.

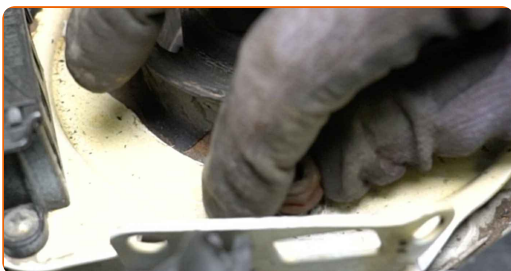
20 Remove the suspension strut.



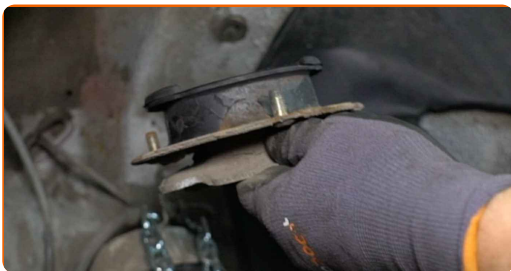
Replacement: suspension strut – Mercedes W201. AUTODOC experts recommend:

- Do not allow the steering knuckle to hang on the brake hose or wiring harness.

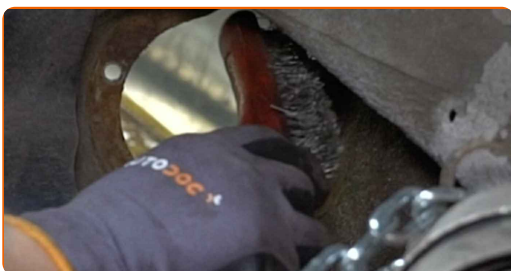
21 Unscrew the fasteners of the upper strut mount.



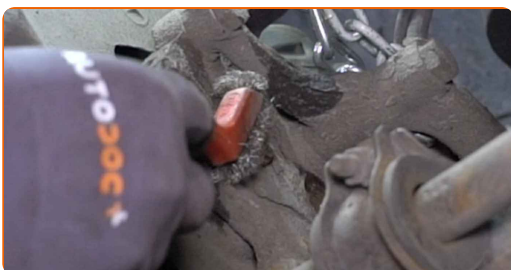
22 Remove the strut mount.



23 Clean the mounting seat of the suspension strut mount. Use a wire brush. Use all-purpose cleaning spray.



24 Clean the mounting seats of the shock strut. Use a wire brush. Use all-purpose cleaning spray.



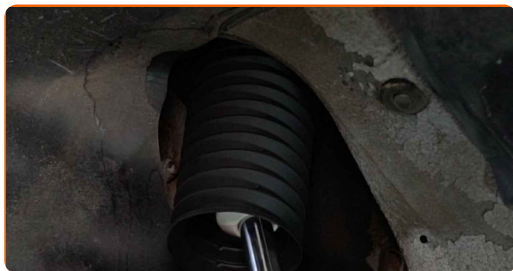
25 Install the top suspension strut mount.



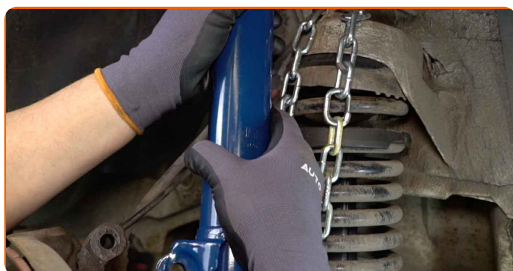
26 Screw on the fasteners of the upper strut mount.



27 Install the dust boot and the bump stop.



28 Install a new suspension strut.



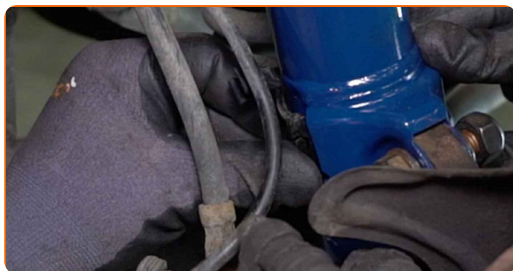
Replacement: suspension strut – Mercedes W201. Tip from AUTODOC:

- Before installing a new shock absorber you should pump it 3–5 times by hand.

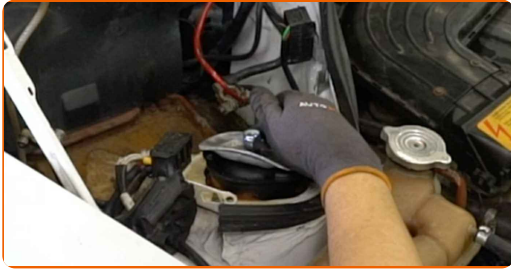
29 Install the fastening bolts.



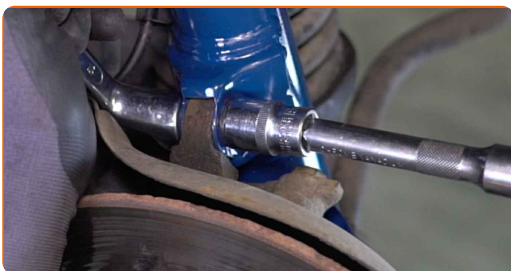
30 Secure the wiring to the strut.



31 Screw on the fastener of the strut piston rod.



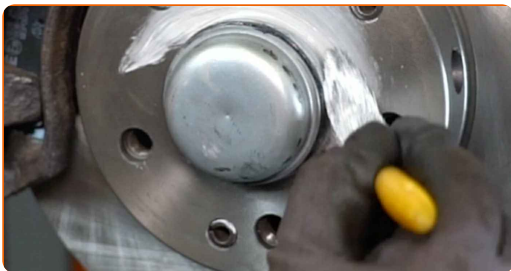
32 Tighten the lower fasteners connecting the shock strut to the steering knuckle. Use a combination spanner #19. Use a drive socket #19. Use a torque wrench. Tighten it to 110 Nm torque.



33 Clean the wheel rim mounting seat. Use a wire brush. Use all-purpose cleaning spray.



34 Treat the surface where the brake disc contacts the wheel rim. Use ceramic grease.



35 Install the wheel.



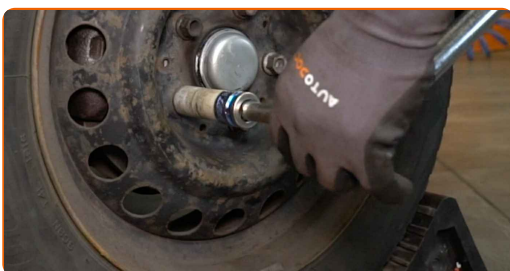
AUTODOC recommends:

- To avoid injury, hold up the wheel when screwing in the fastening bolts.

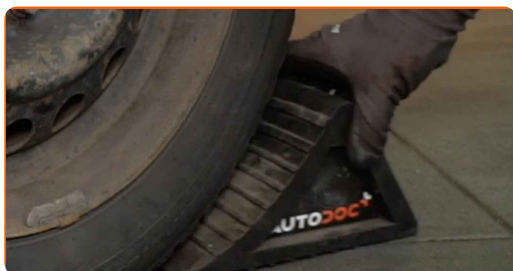
36 Screw in the wheel bolts. Use wheel impact socket #17. Use a ratchet wrench.



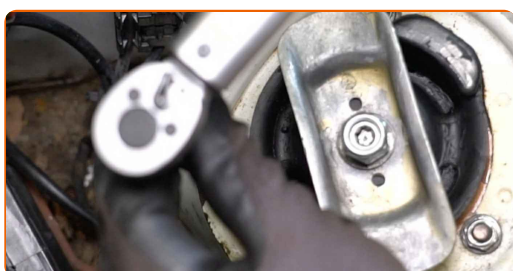
37 Lower the car and working in a cross order, tighten the wheel bolts. Use wheel impact socket #17. Use a torque wrench. Tighten it to 110 Nm torque.



38 Remove the jacks and chocks.



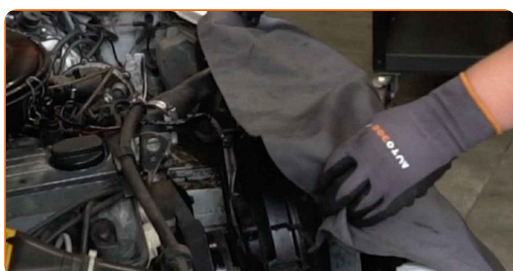
39 Tighten the fasteners of the upper strut mount. Use a drive socket #13. Use a torque wrench. Tighten it to 20 Nm torque.



40 Tighten the fastener of the suspension strut piston rod. Use a special drive socket to remove the shock absorber # 19. Use HEX No.H6. Use a torque wrench. Tighten it to 60 Nm torque.



41 Remove the fender protection cover.



42

Close the bonnet.



WELL DONE! 

VIEW MORE TUTORIALS

AUTODOC – TOP QUALITY AND AFFORDABLE CAR PARTS ONLINE

AUTODOC MOBILE APP: GREAT DEALS AND CONVENIENT SHOPPING



+ AUTODOC

GET IT ON
Google Play

Download on the
App Store

Download

A GREAT SELECTION OF SPARE PARTS FOR YOUR CAR

BUY SPARE PARTS FOR MERCEDES

SHOCK ABSORBERS: A WIDE SELECTION

CHOOSE CAR PARTS FOR MERCEDES W201

SHOCK ABSORBERS FOR MERCEDES: BUY NOW

**SHOCK ABSORBERS FOR MERCEDES W201: THE BEST
DEALS & OFFERS**

DISCLAIMER:

The document contains only general recommendations that may be useful for you when you perform repair or replacement work. AUTODOC shall not be liable for any loss, injury, damage of property occurring in the repair or replacement process due to incorrect use or misinterpretation of the provided information.

AUTODOC shall not be liable for any possible mistakes and uncertainties in this guide. The information provided is for information purposes only and cannot replace advice from specialists.

AUTODOC shall not be liable for incorrect or hazardous usage of equipment, tools and car parts. AUTODOC strongly recommends to be careful and observe the safety rules when performing repair or replacement works. Remember: usage of low quality auto parts does not guarantee you the appropriate level of road safety.

© Copyright 2023 – All the contents of this website, in particular texts, photographs and graphics, are protected by copyright. All rights, including reproduction, publication, editing and translation rights, are reserved by AUTODOC SE.