



How to change  
serpentine belt on  
**MERCEDES-BENZ G-  
Class Off-Road (W461)** –  
replacement guide

## SIMILAR VIDEO TUTORIAL



This video shows the replacement procedure of a similar car part on another vehicle

### Important!

This replacement procedure can be used for:  
MERCEDES-BENZ G-Class Off-Road (W461) G 270 CDI

The steps may slightly vary depending on the car design.

This tutorial was created based on the replacement procedure for a similar car part on: MERCEDES-BENZ E-Class Saloon (W210) E 270 CDI (210.016)

REPLACEMENT: SERPENTINE BELT – MERCEDES-BENZ  
G-CLASS OFF-ROAD (W461). TOOLS YOU'LL NEED:



- 12-point socket # 17
- Drive socket # 27
- Ratchet wrench

**Buy tools**

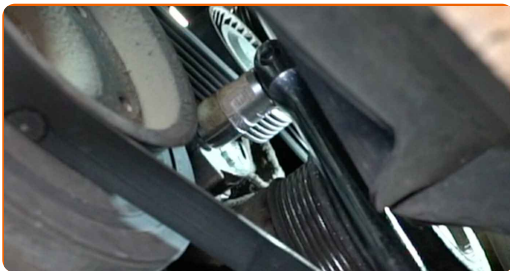
Replacement: serpentine belt – MERCEDES-BENZ G-Class Off-Road (W461).  
Tip from AUTODOC experts:

- All work should be done with the engine stopped.

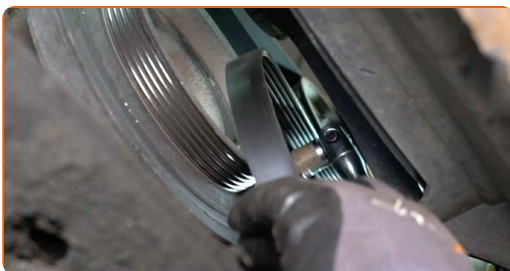
## REPLACEMENT: SERPENTINE BELT – MERCEDES-BENZ G-CLASS OFF-ROAD (W461). RECOMMENDED SEQUENCE OF STEPS:

**1** Lift the car using a jack or place it over an inspection pit.

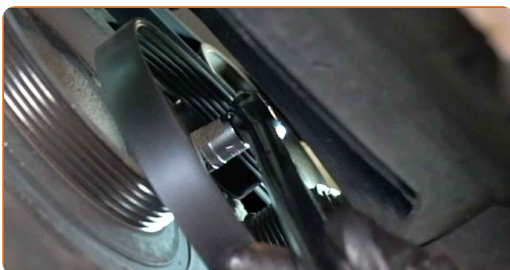
**2** Pull aside the V-ribbed belt tensioner pulley. Use 12-point socket No.17. Use a ratchet wrench.



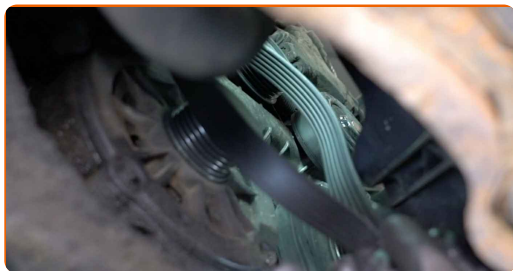
**3** Remove the V-ribbed belt from the pulley.



**4** Return the tensioner pulley to its initial position.



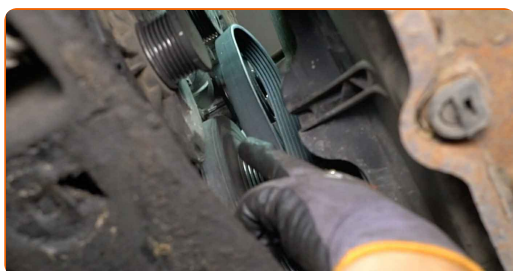
**5** Remove the V-ribbed belt.



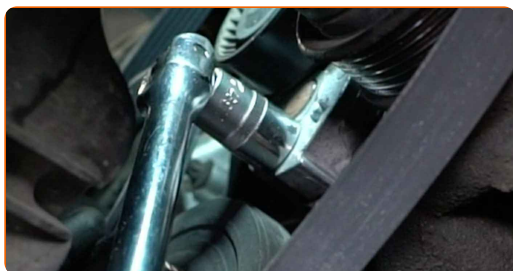
Replacement: serpentine belt – MERCEDES-BENZ G-Class Off-Road (W461).  
AUTODOC recommends:

- Check the condition of the tensioner pulley and idler pulley. Replace them if necessary.

**6** Install the V-ribbed belt.



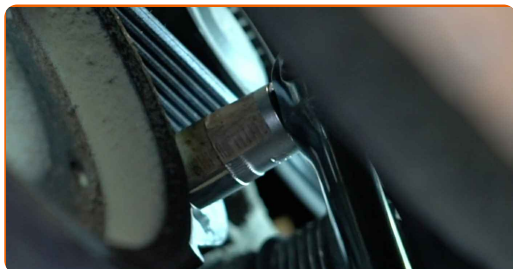
**7** Pull aside the V-ribbed belt tensioner pulley. Use 12-point socket No.17. Use a ratchet wrench.



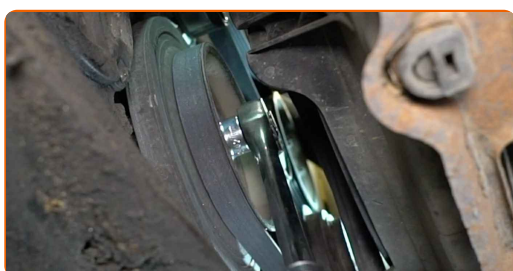
**8** Place the V-ribbed belt on the tensioner pulley.



**9** Return the tensioner pulley to its initial position.



**10** Rotate the crankshaft several times to check whether the new V-ribbed belt is working correctly. Use a drive socket #27. Use a ratchet wrench.

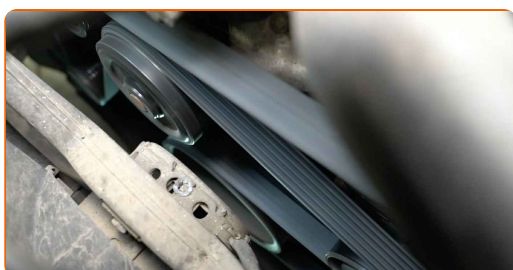


**AUTODOC recommends:**

- Make sure that the V-ribbed belt fits all pulleys snugly.
- Make sure that the V-ribbed belt is properly tensioned.

**11** Lower the car.

**12** Run the engine for a few minutes.



Replacement: serpentine belt – MERCEDES-BENZ G-Class Off-Road (W461).

Tip:

- This is necessary in order to make sure that the component operates properly.

13

Shut off the engine.

**WELL DONE!** 

[VIEW MORE TUTORIALS](#)

# AUTODOC – TOP QUALITY AND AFFORDABLE CAR PARTS ONLINE

**AUTODOC MOBILE APP: GREAT DEALS AND CONVENIENT SHOPPING**



**A GREAT SELECTION OF SPARE PARTS FOR YOUR CAR**

**SERPENTINE BELT: A WIDE SELECTION**

## **DISCLAIMER:**

The document contains only general recommendations that may be useful for you when you perform repair or replacement work. AUTODOC shall not be liable for any loss, injury, damage of property occurring in the repair or replacement process due to incorrect use or misinterpretation of the provided information.

AUTODOC shall not be liable for any possible mistakes and uncertainties in this guide. The information provided is for information purposes only and cannot replace advice from specialists.

AUTODOC shall not be liable for incorrect or hazardous usage of equipment, tools and car parts. AUTODOC strongly recommends to be careful and observe the safety rules when performing repair or replacement works. Remember: usage of low quality auto parts does not guarantee you the appropriate level of road safety.

© Copyright 2022 – All the contents of this website, in particular texts, photographs and graphics, are protected by copyright. All rights, including reproduction, publication, editing and translation rights, are reserved by AUTODOC GmbH.