



How to change ignition
leads on **MERCEDES-
BENZ G-Class Off-Road
(W460)** – replacement
guide

SIMILAR VIDEO TUTORIAL



This video shows the replacement procedure of a similar car part on another vehicle

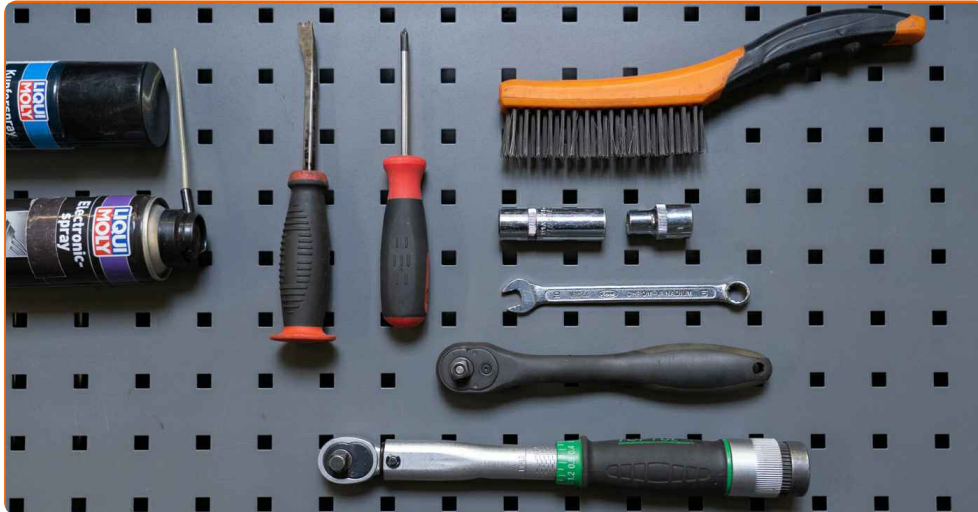
Important!

This replacement procedure can be used for:
MERCEDES-BENZ G-Class Off-Road (W460) 230 GE 2.3

The steps may slightly vary depending on the car design.

This tutorial was created based on the replacement procedure for a similar car part on: MERCEDES-BENZ 190 (W201) 2.0 (201.023)

REPLACEMENT: IGNITION LEADS – MERCEDES-BENZ G-CLASS OFF-ROAD (W460). TOOLS YOU MIGHT NEED:



- Wire brush
- High-temperature anti-seize lubricant
- Dielectric grease
- Torque wrench
- Combination spanner #10
- Drive socket # 10
- Spark plug socket # 16
- Ratchet wrench
- Phillips screwdriver
- Crow bar
- Fender cover

Buy tools

Replacement: ignition leads – MERCEDES-BENZ G-Class Off-Road (W460).
AUTODOC recommends:

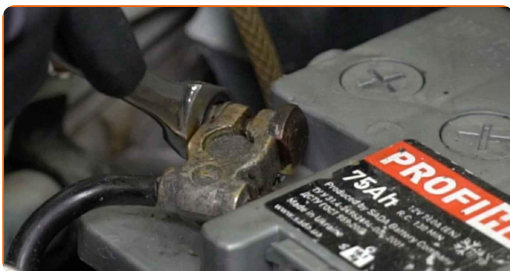
- Warning! Shut down the engine before starting any work – MERCEDES-BENZ G-Class Off-Road (W460).

CARRY OUT REPLACEMENT IN THE FOLLOWING ORDER:

1 Open the bonnet.

2 Use a fender protection cover to prevent damaging paintwork and plastic parts of the car.

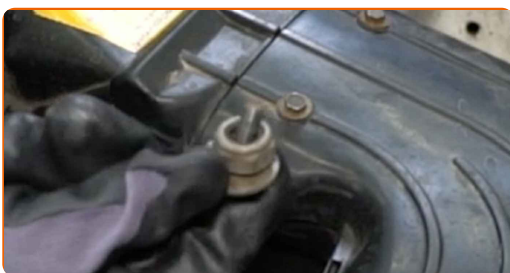
3 Disconnect the earth cable terminal from the battery. Use a combination spanner #10.



4 Unscrew the inlet pipe fasteners. Use a Phillips screwdriver. Use a drive socket #10. Use a ratchet wrench.



5 Remove the fastening bolts.



6 Remove the inlet pipe.



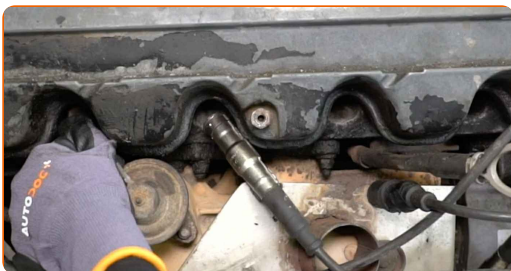
7 Remove the high tension cable bracket.



8 Make marks to indicate the order of installation of the spark plug wires.



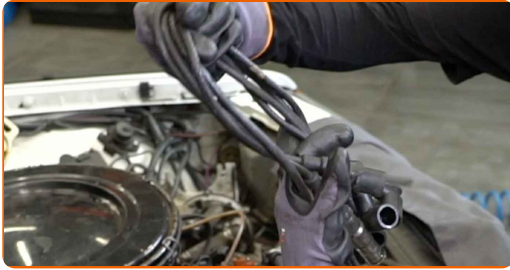
9 Disconnect the spark plug wires from the spark plugs.



10 Disconnect the high tension cables from the ignition distributor.



11 Remove the high tension cables.



12 Treat the ignition distributor terminals. Use a wire brush. Use dielectric grease.



13 Fit new high tension cables.

14 Connect the high tension cables to the ignition distributor.



Replacement: ignition leads – MERCEDES-BENZ G-Class Off-Road (W460). Tip from AUTODOC experts:

- Follow the installation sequence.

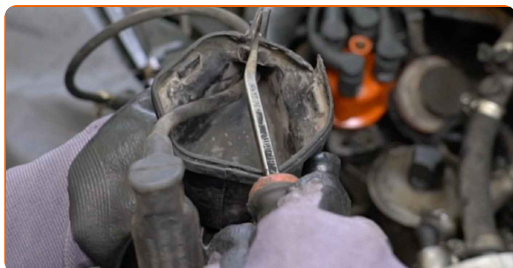
15 Remove the ignition coil cover.



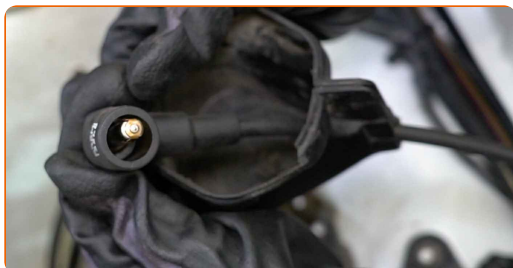
16 Disconnect the high tension cable from the ignition coil.



17 Remove the high tension cable from the ignition coil cover. Use a crowbar.



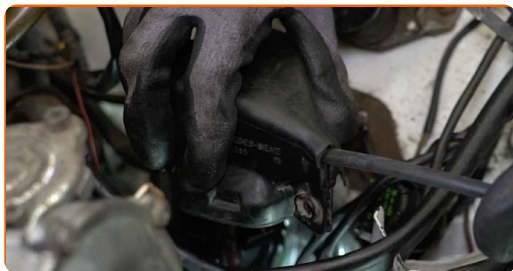
18 Insert the new high tension cable in the ignition coil cover.



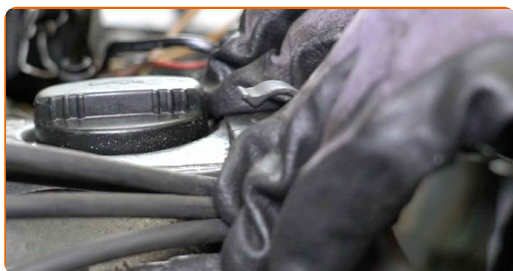
19 Connect the high tension cable to the ignition coil.



20 Fit the ignition coil cover.



21 Install the high tension cable bracket.



22 Connect the spark plug wires to the spark plugs.



AUTODOC recommends:

- Replacement: ignition leads – MERCEDES-BENZ G-Class Off-Road (W460).
Follow the installation steps.

23 Attach the inlet pipe.



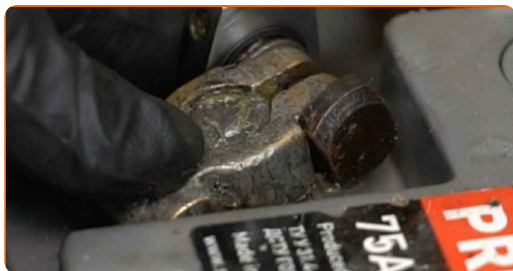
24 Install the fastening bolts.



25 Screw in the inlet pipe fasteners. Use a Phillips screwdriver. Use a drive socket #10. Use a ratchet wrench.



26 Connect the earth cable terminal to the battery.



27 Run the engine for a few minutes. This is necessary in order to make sure that the component operates properly.

28 Shut off the engine.

29 Remove the fender protection cover.

30 Close the bonnet.

WELL DONE! 

VIEW MORE TUTORIALS

AUTODOC – TOP QUALITY AND AFFORDABLE CAR PARTS ONLINE

AUTODOC MOBILE APP: GREAT DEALS AND CONVENIENT SHOPPING



+ AUTODOC

GET IT ON
Google Play

 Download on the
App Store

Download

A GREAT SELECTION OF SPARE PARTS FOR YOUR CAR

IGNITION LEADS: A WIDE SELECTION

DISCLAIMER:

The document contains only general recommendations that may be useful for you when you perform repair or replacement work. AUTODOC shall not be liable for any loss, injury, damage of property occurring in the repair or replacement process due to incorrect use or misinterpretation of the provided information.

AUTODOC shall not be liable for any possible mistakes and uncertainties in this guide. The information provided is for information purposes only and cannot replace advice from specialists.

AUTODOC shall not be liable for incorrect or hazardous usage of equipment, tools and car parts. AUTODOC strongly recommends to be careful and observe the safety rules when performing repair or replacement works. Remember: usage of low quality auto parts does not guarantee you the appropriate level of road safety.

© Copyright 2023 – All the contents of this website, in particular texts, photographs and graphics, are protected by copyright. All rights, including reproduction, publication, editing and translation rights, are reserved by AUTODOC SE.