



How to change rear  
window regulator on  
**MERCEDES-BENZ E-  
Class T-modell (S210)** –  
replacement guide

## SIMILAR VIDEO TUTORIAL



This video shows the replacement procedure of a similar car part on another vehicle

### **Important!**

This replacement procedure can be used for:

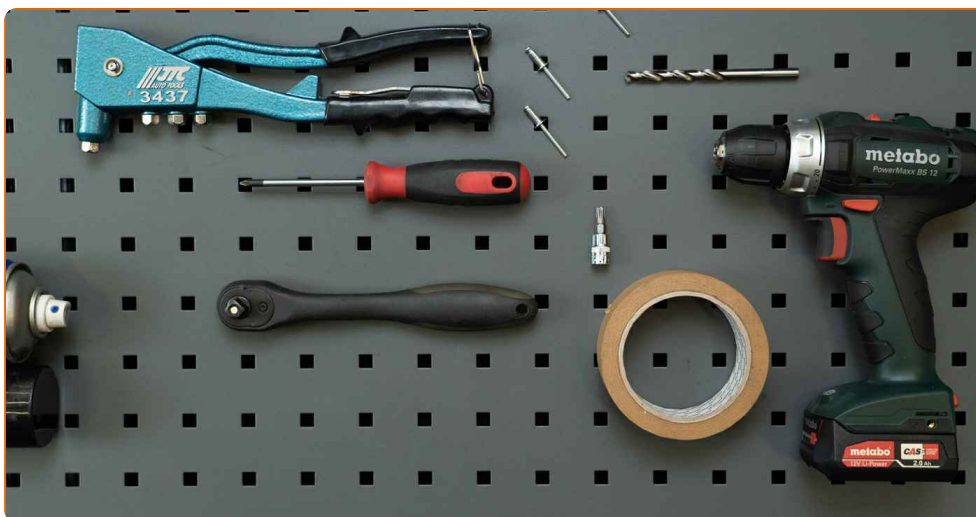
MERCEDES-BENZ E-Class T-modell (S210) E 200 T (210.235), MERCEDES-BENZ E-Class T-modell (S210) E 230 T (210.237), MERCEDES-BENZ E-Class T-modell (S210) E 420 T (210.272), MERCEDES-BENZ E-Class T-modell (S210) E 290 T Turbo-D (210.217), MERCEDES-BENZ E-Class T-modell (S210) E 250 T D (210.210), MERCEDES-BENZ E-Class T-modell (S210) E 270 T CDI, MERCEDES-BENZ E-Class T-modell (S210) E 280 T 4-matic (210.281), MERCEDES-BENZ E-Class T-modell (S210) E 320 T (210.265), MERCEDES-BENZ E-Class T-modell (S210) E 300 T Turbo-D (210.225), MERCEDES-BENZ E-Class T-modell (S210) E 320 T 4-matic (210.282), MERCEDES-BENZ E-Class T-modell (S210) E 250 T Turbo-D (210.215), MERCEDES-BENZ E-Class T-modell (S210) E 280 T (210.263), MERCEDES-BENZ E-Class T-modell (S210) E 240 T (210.261), MERCEDES-BENZ E-Class T-modell (S210) E 430 T (210.270), MERCEDES-BENZ E-Class T-modell (S210) E 200 T Kompressor (210.245), (+ 7)

The steps may slightly vary depending on the car design.

Please note that this tutorial was created based on the replacement procedure for this car part on a car with a similar design.

This tutorial was created based on the replacement procedure for a similar car part on: MERCEDES-BENZ E-Class Saloon (W210) E 270 CDI (210.016)

REPLACEMENT: WINDOW REGULATOR – MERCEDES-BENZ E-CLASS T-MODELL (S210). LIST OF THE TOOLS YOU'LL NEED:



- Torx bit T30
- Ratchet wrench
- Phillips screwdriver
- Plastic trim tool
- Drill
- 7 mm drill bit
- Riveter
- 4.8 mm rivets
- Painter's tape

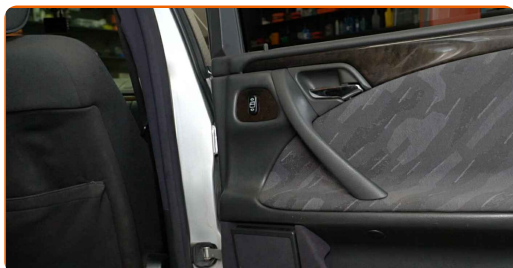
**Buy tools**

Replacement: window regulator – MERCEDES-BENZ E-Class T-modell (S210).  
AUTODOC experts recommend:

- All work should be done with the engine stopped.

## REPLACEMENT: WINDOW REGULATOR – MERCEDES-BENZ E-CLASS T-MODELL (S210). USE THE FOLLOWING PROCEDURE:

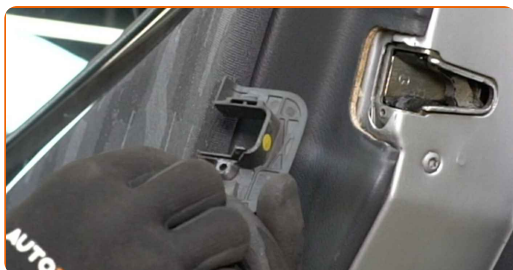
**1** Open the rear door.



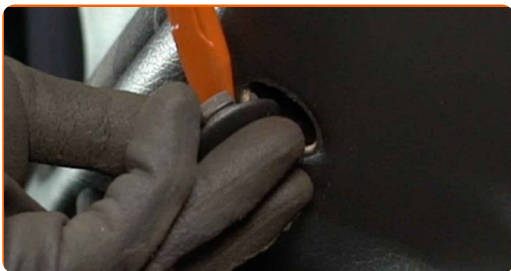
**2** Unscrew the door lock cover fastener. Use a Phillips screwdriver.



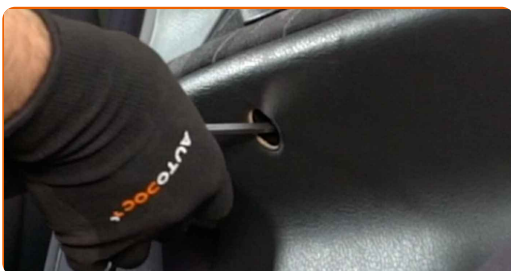
**3** Remove the door lock cover.



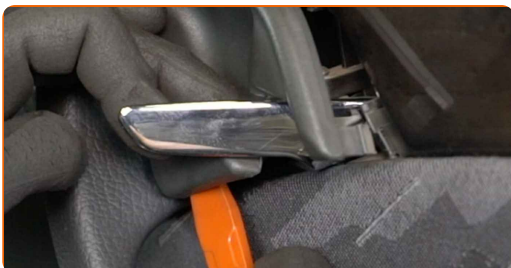
**4** Remove the door card fastener cover. Use a plastic trim tool.



**5** Unscrew the door card fastener. Use a Phillips screwdriver.



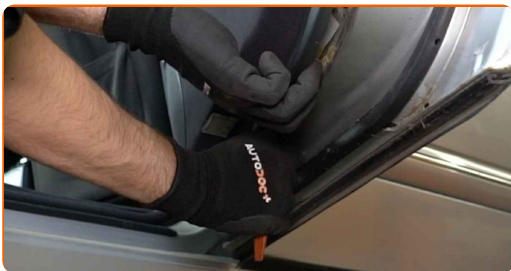
**6** Detach the door handle trim panel. Use a plastic trim tool.



**7** Unscrew the door card fastener. Use a Phillips screwdriver.



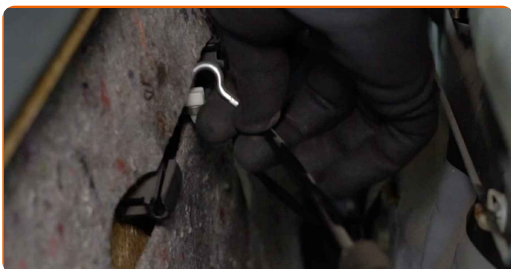
**8** Detach the door card. Use a plastic trim tool.



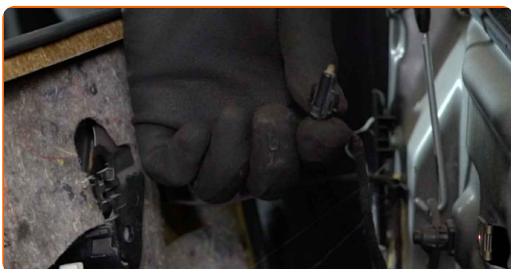
**AUTODOC recommends:**

- Replacement: window regulator – MERCEDES-BENZ E-Class T-modell (S210). Do not use excessive force when removing the part as this may damage it.

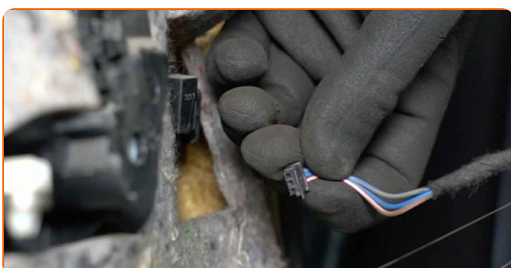
**9** Detach the door lock actuator cable.



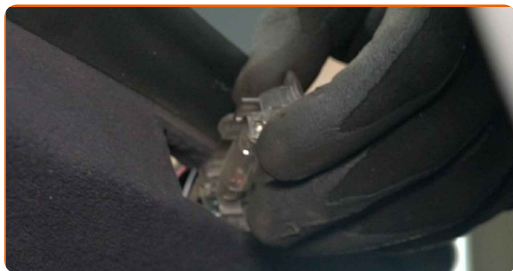
**10** Detach the door handle illumination module.



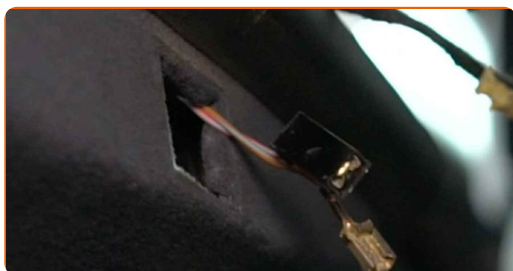
**11** Detach the connector for the power window switch module.



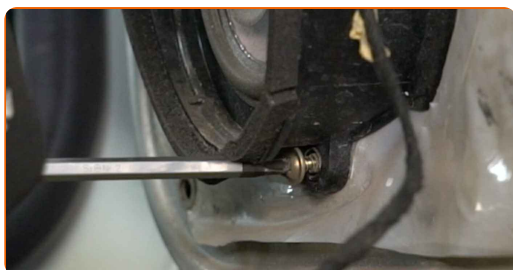
**12** Remove the light. Use a plastic trim tool.



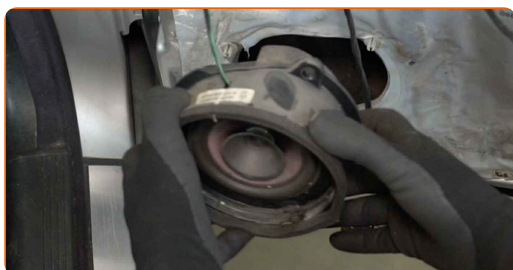
**13** Detach the bulb connector.



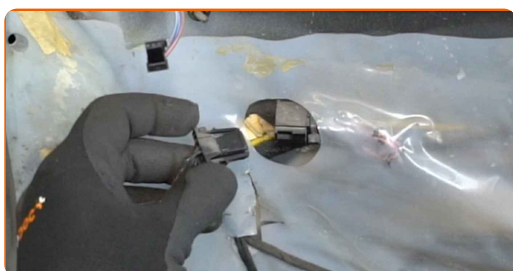
**14** Unscrew the speaker's fasteners. Use a Phillips screwdriver.



**15** Remove the speaker.



**16** Detach the speaker connector.



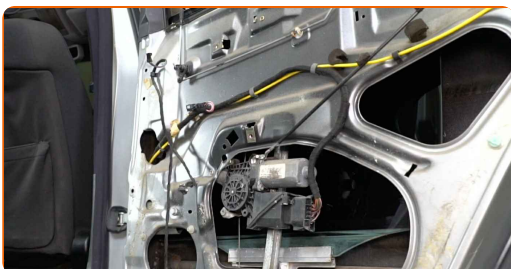


**17** Detach the door panel sound insulation.



**18** Switch on the ignition.

**19** Lower the window glass.



Replacement: window regulator – MERCEDES-BENZ E-Class T-modell (S210).  
Tip:

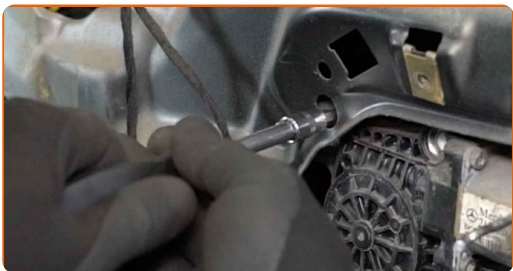
- Continue lowering the window glass until its fasteners become visible.

**20** Switch off the ignition.

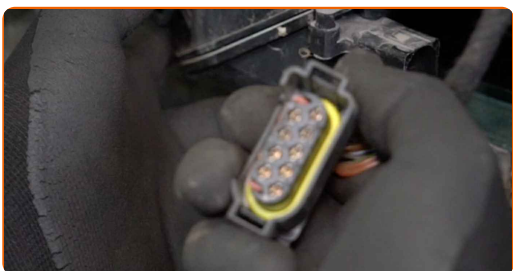
**21** Detach the glass fastener clip. Use a plastic trim tool.



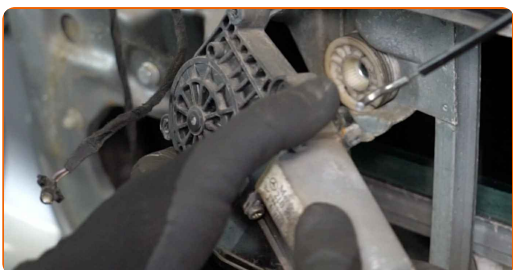
**22** Unscrew the power window motor fasteners. Use Torx T30. Use a ratchet wrench.



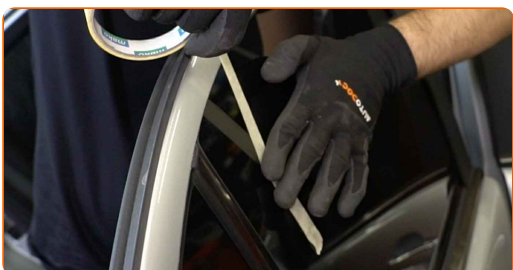
**23** Detach the connector from the power window motor.



**24** Remove the power window motor.



**25** Raise the window glass all the way up and secure it on the door frame with masking tape.

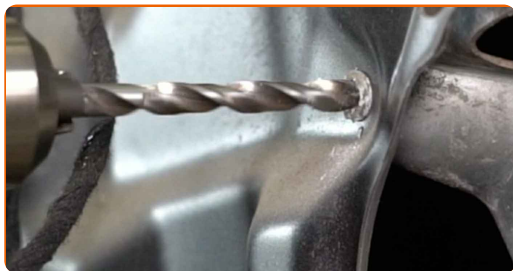


**AUTODOC recommends:**

- To avoid injury, hold the glass when raising it.

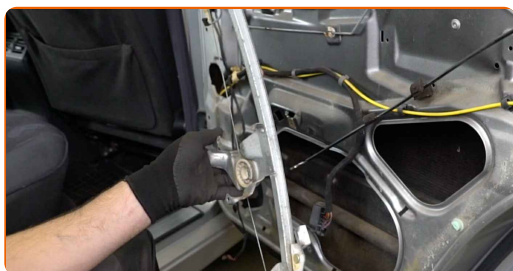
26

Drill out the rivets of the window regulator linkage. Use a drill. Use a 7 mm drill bit.



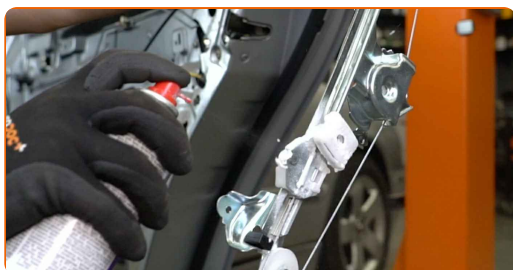
27

Remove the window regulator mechanism.



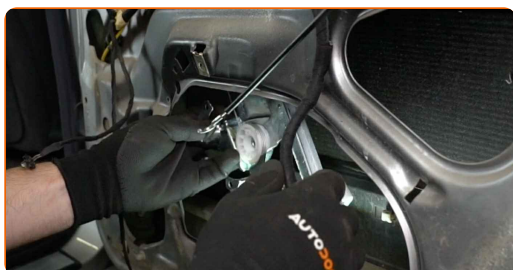
28

Treat the window regulator mechanism. Use a multi-purpose lithium grease.

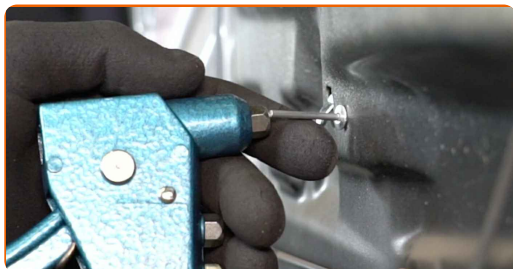


29

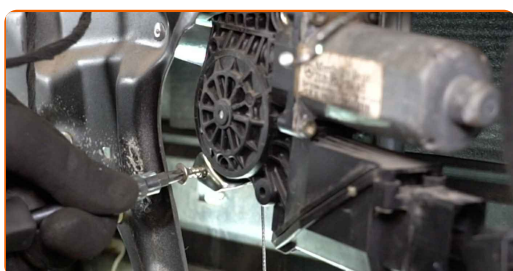
Install the new window regulator mechanism.



**30** Install the rivets of the window regulator mechanism. Use a riveter. Use 4.8 mm rivets.



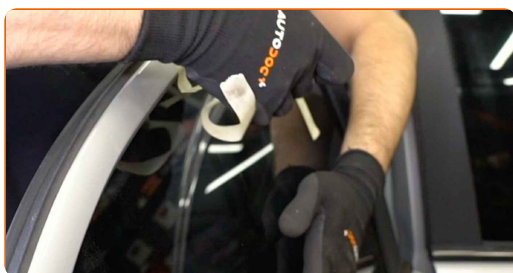
**31** Install and screw in the motor fasteners on the new window regulator mechanism. Use Torx T30. Use a ratchet wrench.



**32** Attach the connector to the power window motor.

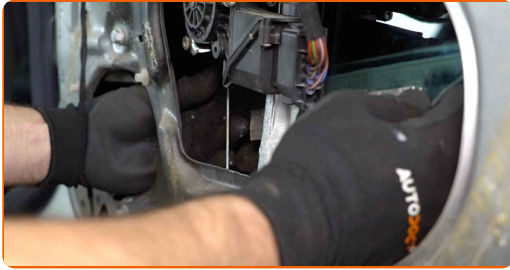


**33** Remove the painter's tape.



34

Lower the window glass and install it to its mounting seat in the window raiser mechanism.



Replacement: window regulator – MERCEDES-BENZ E-Class T-modell (S210).  
AUTODOC experts recommend:

- To avoid injury, hold the glass when lowering it.

35

Reinstall the glass fastener clip.

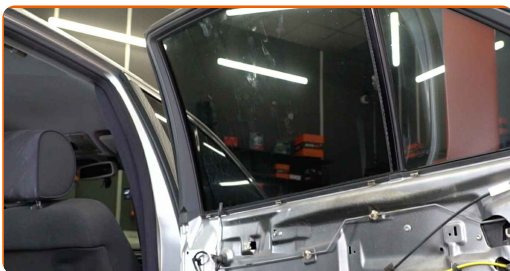


36

Switch on the ignition.

37

Check if the window regulator functions correctly.



38

Switch off the ignition.

**39** Attach the door panel sound insulation.



**40** Install the speaker.



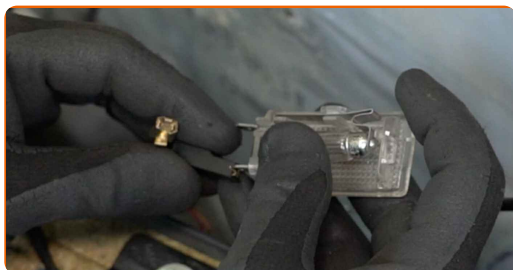
**41** Screw in the speaker's fasteners. Use a Phillips screwdriver.



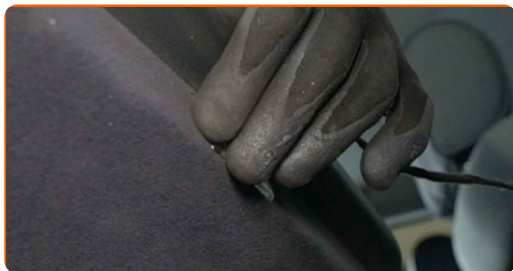
**42** Attach the speaker connector.



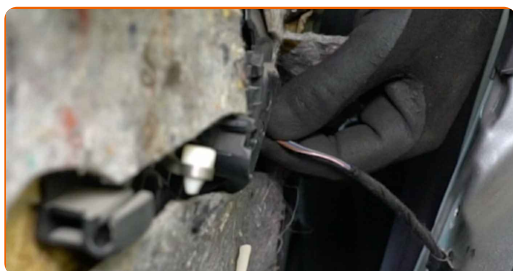
**43** Attach the bulb connector.



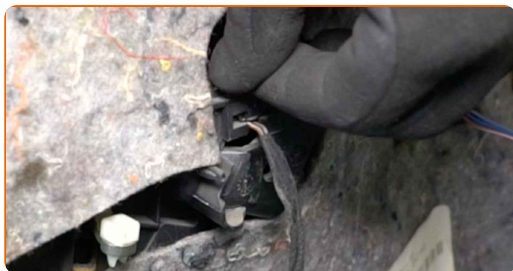
**44** Reinstall the light.



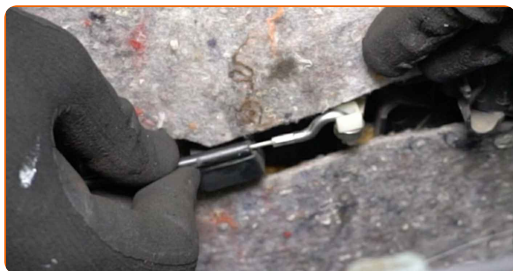
**45** Attach the connector for the power window switch module.



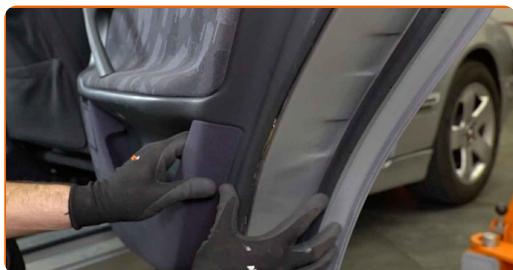
**46** Reattach the door handle illumination module.



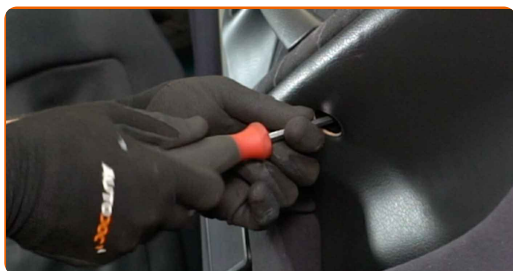
**47** Attach the door lock actuator cable.



**48** Reinstall the door card.



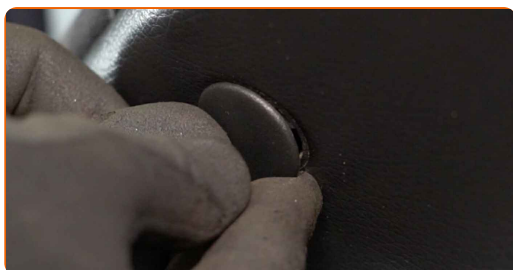
**49** Screw in the door card fasteners. Use a Phillips screwdriver.



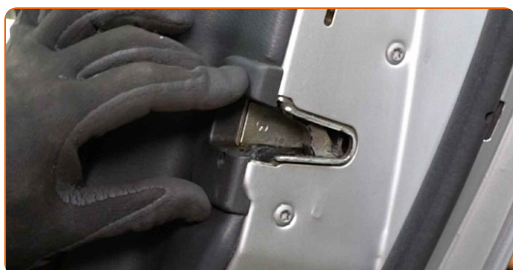
**50** Attach the door handle trim panel.



**51** Reinstall the door card fastener cover.



**52** Reinstall the door lock cover.



**53** Screw in the door lock cover fastener. Use a Phillips screwdriver.





54

Close the rear door.

**WELL DONE!** 

**VIEW MORE TUTORIALS**

# AUTODOC – TOP QUALITY AND AFFORDABLE CAR PARTS ONLINE

**AUTODOC MOBILE APP: GREAT DEALS AND CONVENIENT SHOPPING**



**+ AUTODOC**

GET IT ON  
 **Google Play**

Download on the  
 **App Store**

**Download**

**A GREAT SELECTION OF SPARE PARTS FOR YOUR CAR**

**WINDOW REGULATOR: A WIDE SELECTION**

## **DISCLAIMER:**

The document contains only general recommendations that may be useful for you when you perform repair or replacement work. AUTODOC shall not be liable for any loss, injury, damage of property occurring in the repair or replacement process due to incorrect use or misinterpretation of the provided information.

AUTODOC shall not be liable for any possible mistakes and uncertainties in this guide. The information provided is for information purposes only and cannot replace advice from specialists.

AUTODOC shall not be liable for incorrect or hazardous usage of equipment, tools and car parts. AUTODOC strongly recommends to be careful and observe the safety rules when performing repair or replacement works. Remember: usage of low quality auto parts does not guarantee you the appropriate level of road safety.

© Copyright 2022 – All the contents of this website, in particular texts, photographs and graphics, are protected by copyright. All rights, including reproduction, publication, editing and translation rights, are reserved by AUTODOC GmbH.