



How to change pollen  
filter on **MERCEDES-  
BENZ E-Class  
Convertible (A207)** –  
replacement guide

### SIMILAR VIDEO TUTORIAL



This video shows the replacement procedure of a similar car part on another vehicle

### Important!

This replacement procedure can be used for:

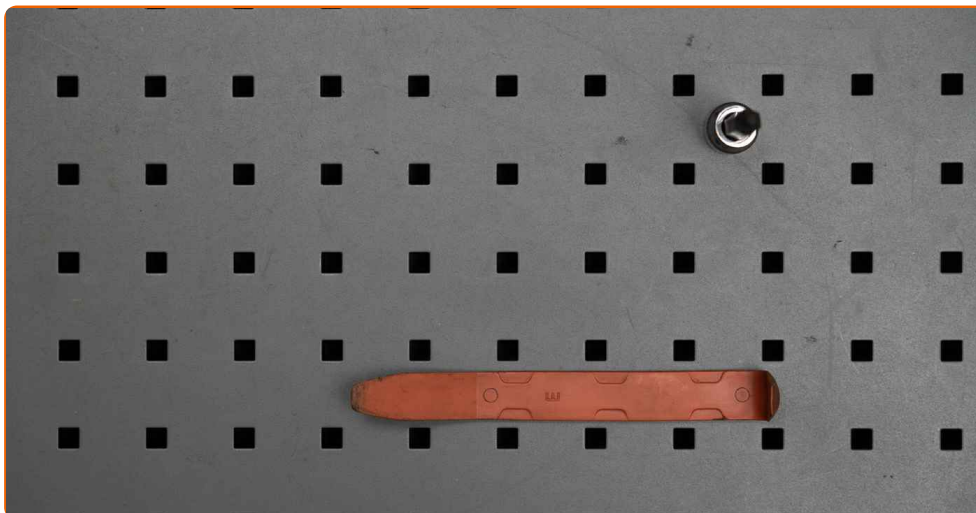
MERCEDES-BENZ E-Class Convertible (A207) E 350 CDI, MERCEDES-BENZ E-Class Convertible (A207) E 300 (207.455), MERCEDES-BENZ E-Class Convertible (A207) E 350 (207.459), MERCEDES-BENZ E-Class Convertible (A207) E 500 (207.473), MERCEDES-BENZ E-Class Convertible (A207) E 350 (207.356), MERCEDES-BENZ E-Class Convertible (A207) E 220 CDI / BlueTEC / d (207.402, 207.401), MERCEDES-BENZ E-Class Convertible (A207) E 250 CDI / BlueTEC / d (207.403, 207.404), MERCEDES-BENZ E-Class Convertible (A207) E 350 CDI (207.422), MERCEDES-BENZ E-Class Convertible (A207) E 200 CGI (207.448), MERCEDES-BENZ E-Class Convertible (A207) E 250 CGI (207.447), MERCEDES-BENZ E-Class Convertible (A207) E 350 CGI (207.457), MERCEDES-BENZ E-Class Convertible (A207) E 500 (207.472), MERCEDES-BENZ E-Class Convertible (A207) E 220 CDI (207.402), MERCEDES-BENZ E-Class Convertible (A207) E 350 BlueTEC (207.426), MERCEDES-BENZ E-Class Convertible (A207) E 200 (207.434), (+ 6)

The steps may slightly vary depending on the car design.

Please note that this tutorial was created based on the replacement procedure for this car part on a car with a similar design.

This tutorial was created based on the replacement procedure for a similar car part on: MERCEDES-BENZ C-Class Saloon (W204) C 220 CDI (204.008)

REPLACEMENT: POLLEN FILTER – MERCEDES-BENZ E-  
CLASS CONVERTIBLE (A207). TOOLS YOU NEED:



• Torx bit T20

• Plastic trim tool

**Buy tools**

Replacement: pollen filter – MERCEDES-BENZ E-Class Convertible (A207). Tip from AUTODOC experts:

- Replace the cabin filter at least once every six months, in early spring and autumn seasons.
- Follow the terms, recommendations and requirements of the part operation provided by the manufacturer.
- If the air flow into the cabin has sharply reduced, replace the filter before a scheduled maintenance.
- Please note: all work on the car – MERCEDES-BENZ E-Class Convertible (A207) – should be done with the engine switched off.

**CARRY OUT REPLACEMENT IN THE FOLLOWING ORDER:**

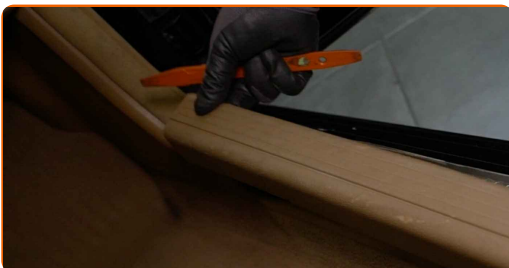
1

Remove the floor mat from the passenger side.

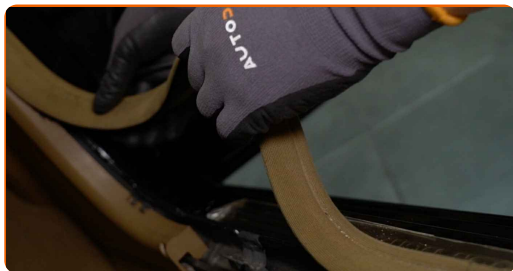


2

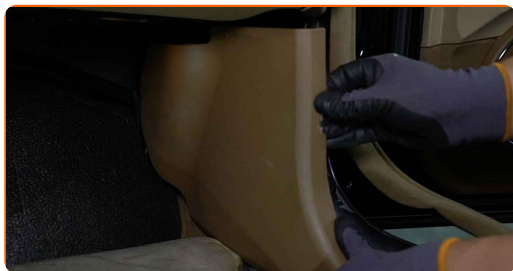
Remove the inner door sill cover. Use a plastic trim tool.



**3** Remove the door opening weatherstrip.



**4** Remove the side panel on the passenger side.



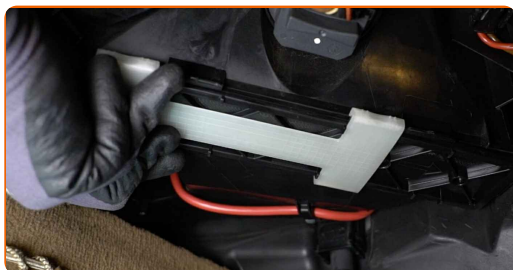
**5** Unscrew the fasteners of the passenger side kick panel. Use Torx T20.



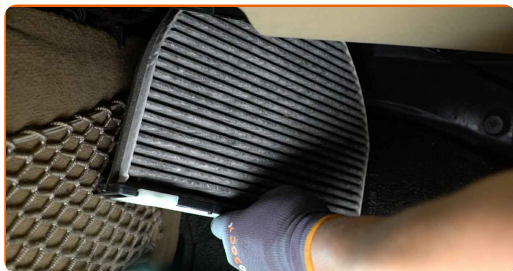
**6** Move the lower glove box cover aside.



**7** Slide the cabin filter retainer to release it.



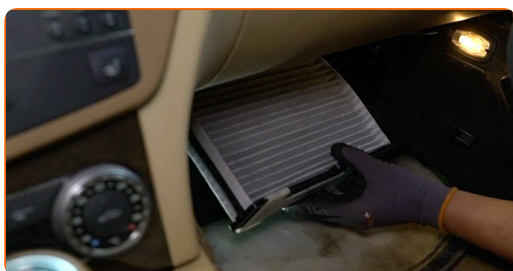
**8** Remove the cabin filter.



Replacement: pollen filter – MERCEDES-BENZ E-Class Convertible (A207). Tip from AUTODOC experts:

- Do not attempt to clean and reuse the filter - it will affect the quality of air cleaning inside the car.

**9** Install the cabin filter to its mounting seat.



AUTODOC recommends:

- Follow the air flow direction arrow on the filter.
- Attention! Use quality filters – MERCEDES-BENZ E-Class Convertible (A207).

**10** Slide the retainer back to secure the filter.



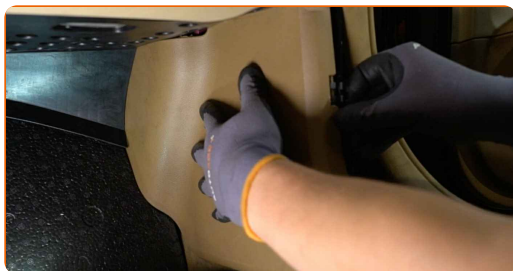
**11** Install and secure the cover under the glove box.



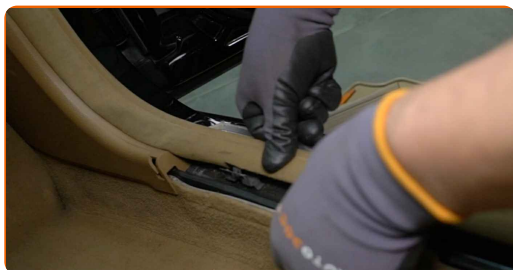
**12** Screw in the fasteners of the passenger side kick panel. Use Torx T20.



**13** Install the side panel on the passenger side.

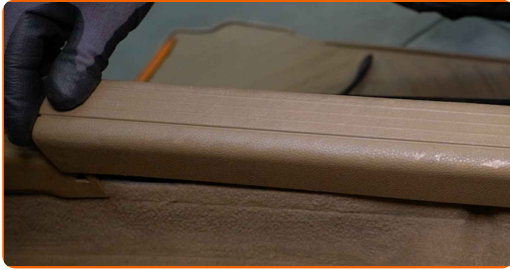


**14** Install the door opening weatherstrip.





**15** Install the inner door sill cover.



**16** Return the floor mat to the original position.



**17** Switch on the ignition.

**18** Switch on the air conditioning system. This is necessary in order to make sure that the component operates properly.

**19** Switch off the ignition.

**WELL DONE!** 

**VIEW MORE TUTORIALS**

# AUTODOC – TOP QUALITY AND AFFORDABLE CAR PARTS ONLINE

**AUTODOC MOBILE APP: GREAT DEALS AND CONVENIENT SHOPPING**



**+ AUTODOC**

GET IT ON  
**Google Play**

Download on the  
**App Store**

**Download**

**A GREAT SELECTION OF SPARE PARTS FOR YOUR CAR**

**POLLEN FILTER: A WIDE SELECTION**

## **DISCLAIMER:**

The document contains only general recommendations that may be useful for you when you perform repair or replacement work. AUTODOC shall not be liable for any loss, injury, damage of property occurring in the repair or replacement process due to incorrect use or misinterpretation of the provided information.

AUTODOC shall not be liable for any possible mistakes and uncertainties in this guide. The information provided is for information purposes only and cannot replace advice from specialists.

AUTODOC shall not be liable for incorrect or hazardous usage of equipment, tools and car parts. AUTODOC strongly recommends to be careful and observe the safety rules when performing repair or replacement works. Remember: usage of low quality auto parts does not guarantee you the appropriate level of road safety.

© Copyright 2022 – All the contents of this website, in particular texts, photographs and graphics, are protected by copyright. All rights, including reproduction, publication, editing and translation rights, are reserved by AUTODOC GmbH.