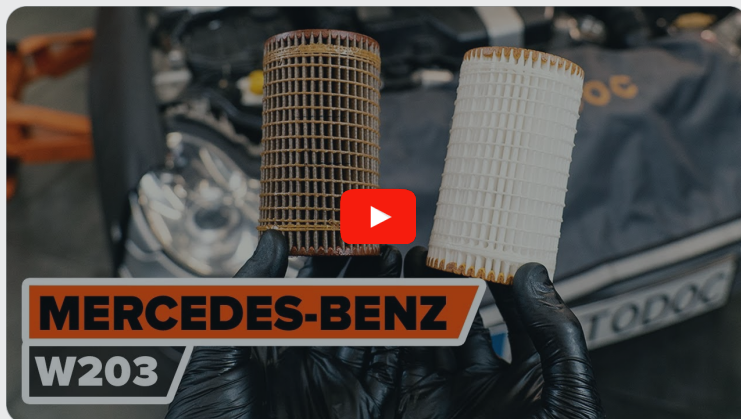




How to change engine oil  
and filter on **MERCEDES-  
BENZ E-Class**  
**Convertible (A207) V6** –  
replacement guide

## SIMILAR VIDEO TUTORIAL



This video shows the replacement procedure of a similar car part on another vehicle

### Important!

This replacement procedure can be used for:

MERCEDES-BENZ E-Class Convertible (A207) E 350 CGI (207.457), MERCEDES-BENZ E-Class Convertible (A207) E 500 (207.472)

The steps may slightly vary depending on the car design.

This tutorial was created based on the replacement procedure for a similar car part on: MERCEDES-BENZ C-Class Saloon (W203) C 240 (203.061)

**REPLACEMENT: ENGINE OIL AND FILTER – MERCEDES-BENZ E-CLASS CONVERTIBLE (A207) V6. TOOLS YOU NEED:**



- Wire brush
- All-purpose cleaning spray
- Torque wrench
- Combination spanner #13
- Drive socket # 8
- Drive socket # 13
- Oil filter cup socket 74/15F
- Ratchet wrench
- Oil drain pan
- Funnel
- Flat Screwdriver
- Microfibre towel
- Fender cover

**Buy tools**

Replacement: engine oil and filter – MERCEDES-BENZ E-Class Convertible (A207) V6. Tip from AUTODOC:

- Replace the oil filter every time when changing motor oil.
- Use only new O-rings during installation.
- Wear gloves to prevent contact with hot liquid.
- Please note: all work on the car – MERCEDES-BENZ E-Class Convertible (A207) V6 – should be done with the engine switched off.

**CARRY OUT REPLACEMENT IN THE FOLLOWING ORDER:**

**1** Open the hood.

**2** Use a fender protection cover to prevent damaging paintwork and plastic parts of the car.

**3** Unscrew the oil filler plug.



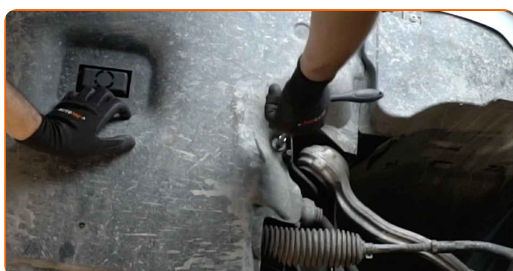
**4** Lift the car using a jack or place it over an inspection pit.

Replacement: engine oil and filter – MERCEDES-BENZ E-Class Convertible (A207) V6. Professionals recommend:

- The vehicle must be on even keel, and if it is at an angle, the drain plug must be at the lowest point.

5

Undo the fasteners of the oil pan lower cover. Use a drive socket #8. Use a ratchet wrench.



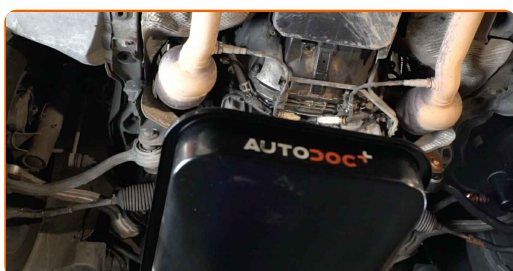
6

Remove the oil pan cover.



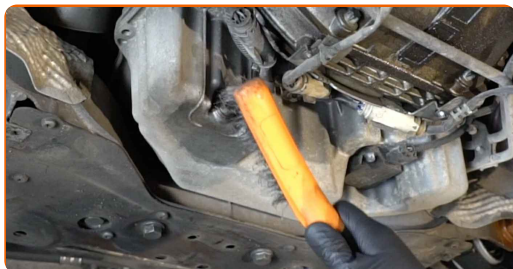
7

Put a waste oil container with at least 9 l capacity under the drainage hole.



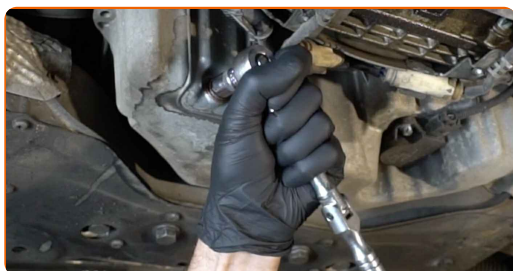
8

Clean the area of the oil pan drainage hole. Use a wire brush. Use all-purpose cleaning spray.



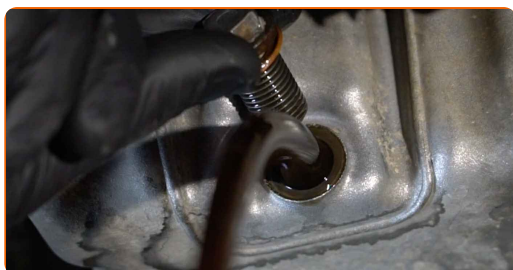
9

Unscrew the drain plug. Use a combination spanner #13. Use a drive socket #13. Use a ratchet wrench.



10

Drain the used oil.



Replacement: engine oil and filter – MERCEDES-BENZ E-Class Convertible (A207) V6. Tip from AUTODOC:

- Caution! The oil may be hot.
- Wait until the oil has completely drained from the drainage hole.

**11**

Clean the oil filter housing cap.



**12**

Unscrew the filter housing cap together with the old filter element. Use the 74/15F socket. Use a ratchet wrench.



**13**

Prepare a container for the old oil filter.

**14**

Put the old oil filter in the container.



**Replacement: engine oil and filter – MERCEDES-BENZ E-Class Convertible (A207) V6. AUTODOC recommends:**

- Move up the container. The oil starts to drain out of the drainage hole immediately after you have removed the oil filter.

**15**

Cover the oil filter housing with a microfibre towel to prevent dirt and foreign objects from getting into the system.



**16** Detach the oil filter from the filter cover.



**17** Remove old o-rings from the oil filter cover. Use a flat screwdriver.



**18** Clean the oil filter housing cap. Use all-purpose cleaning spray.



**19** Install new O-rings and a new oil filter to their mounting seats on the filter cover.



**Please note!**

- Make sure to install the filter correctly. Don't mix up the sides of the part.



**20** Lubricate the rubber seal of the new filter with a little amount of fresh oil.

**21** Remove the microfibre towel from the oil filter housing.

**22** Install a new oil filter housing cover and tighten it. Use the 74/15F socket. Use a torque wrench. Tighten it to 25 Nm torque.



**23** Clean the area of the oil pan drainage hole.



**24** Screw in the new drainage plug and tighten it. Use a drive socket #13. Use a torque wrench. Tighten it to 30 Nm torque.



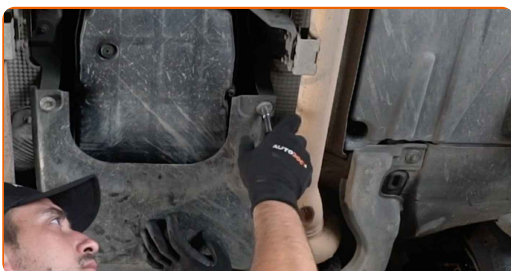
**25** Clean the area of the oil pan drainage hole. Use all-purpose cleaning spray.



**26** Reinstall the oil pan lower cover.

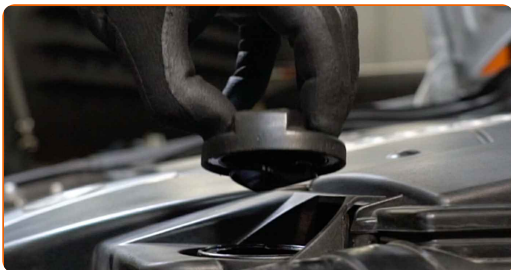


**27** Tighten the fasteners of the oil pan lower cover. Use a drive socket #8. Use a ratchet wrench.

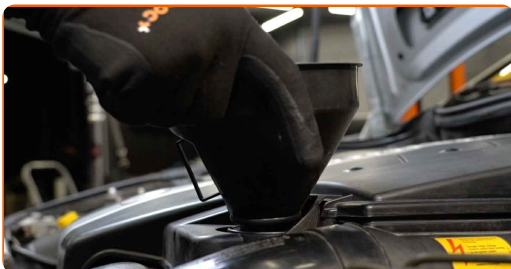


**28** Lower the car.

**29** Remove the oil filler cap.



**30** Insert the funnel.



**31** Pour oil into the engine through the filler. Required amount of oil: 8 L.



Replacement: engine oil and filter – MERCEDES-BENZ E-Class Convertible (A207) V6. Tip:

- Use the oil recommended by the manufacturer.

**32** Install the oil filler cap.



**33** Tighten the oil filler cap.



**34** Switch on the ignition.

**35** Check the oil level using the on-board computer. Top up oil if necessary.

- 36 Run the engine for a few minutes. After the oil pressure warning light goes out, stop the engine. Switch off the ignition.



Replacement: engine oil and filter – MERCEDES-BENZ E-Class Convertible (A207) V6. AUTODOC experts recommend:

- Make sure that the oil filler cap is properly tightened.
- Check the threaded plug of the drainage hole and the oil filter seal for tightness. If necessary, carefully tighten them up.

- 37 Remove the fender protection cover.

- 38 Close the hood.

## Replacement: engine oil and filter – MERCEDES-BENZ E-Class Convertible (A207) V6. Tip from AUTODOC:

- Note that oil pressure warning light, which indicates insufficient pressure in the lubrication system, may be on for a longer time than usual. After a few seconds, the oil will fill all the channels, and the light will go out.
- To protect the environment from pollution, be sure to dispose of the used filters at special collection points.

**WELL DONE!** 

[VIEW MORE TUTORIALS](#)

# AUTODOC – TOP QUALITY AND AFFORDABLE CAR PARTS ONLINE

**AUTODOC MOBILE APP: GREAT DEALS AND CONVENIENT SHOPPING**



**+ AUTODOC**

GET IT ON  
**Google Play**

Download on the  
**App Store**

**Download**

**A GREAT SELECTION OF SPARE PARTS FOR YOUR CAR**

**OIL FILTERS: A WIDE SELECTION**

## **DISCLAIMER:**

The document contains only general recommendations that may be useful for you when you perform repair or replacement work. AUTODOC shall not be liable for any loss, injury, damage of property occurring in the repair or replacement process due to incorrect use or misinterpretation of the provided information.

AUTODOC shall not be liable for any possible mistakes and uncertainties in this guide. The information provided is for information purposes only and cannot replace advice from specialists.

AUTODOC shall not be liable for incorrect or hazardous usage of equipment, tools and car parts. AUTODOC strongly recommends to be careful and observe the safety rules when performing repair or replacement works. Remember: usage of low quality auto parts does not guarantee you the appropriate level of road safety.

© Copyright 2022 – All the contents of this website, in particular texts, photographs and graphics, are protected by copyright. All rights, including reproduction, publication, editing and translation rights, are reserved by AUTODOC GmbH.