



How to change front
strut mount on
MERCEDES-BENZ CLK
Convertible (A209) –
replacement guide

SIMILAR VIDEO TUTORIAL



This video shows the replacement procedure of a similar car part on another vehicle

Important!

This replacement procedure can be used for:

MERCEDES-BENZ CLK Convertible (A209) CLK 200 Kompressor (209.442),
 MERCEDES-BENZ CLK Convertible (A209) CLK 240 (209.461), MERCEDES-BENZ CLK
 Convertible (A209) CLK 320 (209.465), MERCEDES-BENZ CLK Convertible (A209) CLK
 500 (209.475), MERCEDES-BENZ CLK Convertible (A209) CLK 55 AMG (209.476),
 MERCEDES-BENZ CLK Convertible (A209) CLK 350 (209.456), MERCEDES-BENZ CLK
 Convertible (A209) CLK 280 (209.454), MERCEDES-BENZ CLK Convertible (A209) CLK
 63 AMG (209.477), MERCEDES-BENZ CLK Convertible (A209) CLK 320 CDI (209.420),
 MERCEDES-BENZ CLK Convertible (A209) CLK 200 Kompressor (209.441),
 MERCEDES-BENZ CLK Convertible (A209) CLK 500 (209.472)

The steps may slightly vary depending on the car design.

This tutorial was created based on the replacement procedure for a similar car part
 on: MERCEDES-BENZ C-Class Saloon (W203) C 240 (203.061)

REPLACEMENT: STRUT MOUNT – MERCEDES-BENZ CLK CONVERTIBLE (A209). TOOLS YOU NEED:



- Wire brush
- WD-40 spray
- Brake cleaner
- Copper grease
- Torque wrench
- Combination spanner #21
- HEX bit No.H6.
- HEX bit No.H7.
- HEX bit No.H12.
- Drive socket # 16
- Drive socket # 19
- Drive socket # 21
- 14X2.5-mm strut nut socket
- Wheel impact socket #17
- Ratchet wrench
- Tap wrench
- Crow bar
- Nippers
- Hydraulic strut spring compressor
- Hydraulic transmission jack
- Fender cover
- Wheel chock

Buy tools

Replacement: strut mount – MERCEDES-BENZ CLK Convertible (A209). Tip from AUTODOC:

- The replacement procedure is identical for the mounts of the left and right shock struts of the front suspension.
- All mounts of the front shock struts should be replaced simultaneously.
- All work should be done with the engine stopped.

REPLACEMENT: STRUT MOUNT – MERCEDES-BENZ CLK CONVERTIBLE (A209). USE THE FOLLOWING PROCEDURE:

1 Open the bonnet.

2 Use a fender protection cover to prevent damaging paintwork and plastic parts of the car.

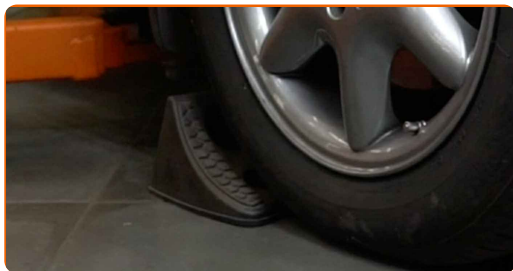
3 Clean the fasteners of the shock strut upper mount. Use a wire brush. Use WD-40 spray.



4 Loosen the upper fastener of the shock strut mount. Use a combination spanner #21. Use HEX No.H7. Use a ratchet wrench.



5 Secure the wheels with chocks.

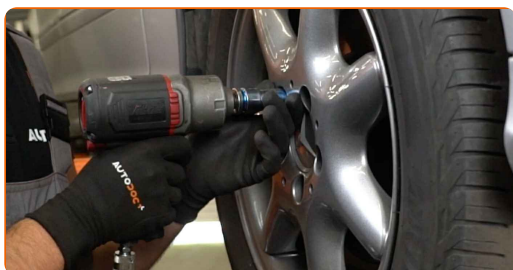


6 Loosen the wheel mounting bolts. Use wheel impact socket #17.



7 Raise the front of the car and secure on supports.

8 Unscrew the wheel bolts.



AUTODOC recommends:

- Warning! To avoid injury, hold the wheel while unscrewing the fastening bolts.
MERCEDES-BENZ CLK Convertible (A209)

9 Remove the wheel.



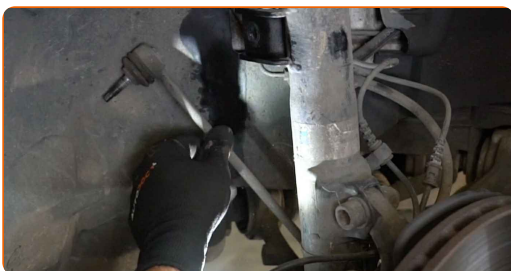
10 Clean the stabiliser link fasteners. Use a wire brush. Use WD-40 spray.



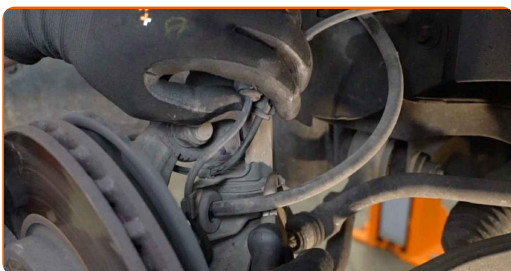
11 Unscrew the fastener connecting the stabilizer link to the shock strut. Use a drive socket #16. Use a ratchet wrench.



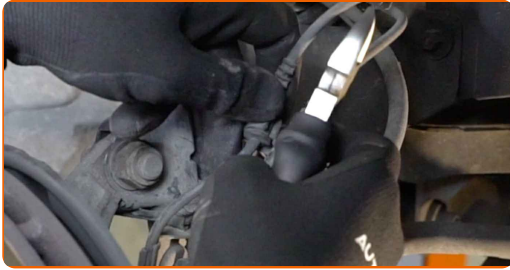
12 Remove the stabilizer rod.



13 Disconnect the brake hose bracket. Use nippers.



14 Disconnect the ABS sensor wiring.



15 Disconnect the brake pad wear sensor wire.



16 Clean the fasteners connecting the shock strut to the steering knuckle. Use a wire brush. Use WD-40 spray.



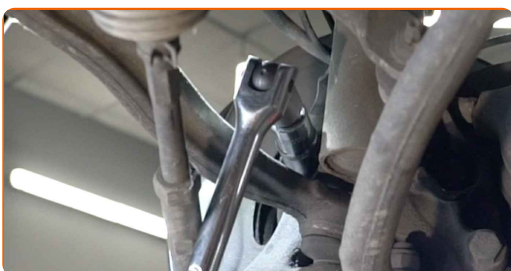
17 Unscrew the upper fastener connecting the shock strut to the steering knuckle. Use HEX No.H12. Use a drive socket #21. Use a ratchet wrench. Use a tap wrench.



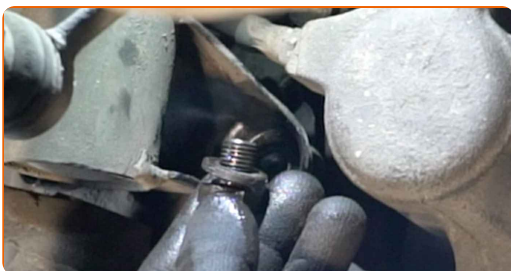
18 Clean the fasteners connecting the shock strut to the steering knuckle. Use a wire brush. Use WD-40 spray.



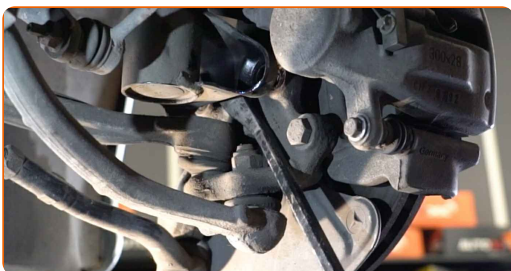
19 Unscrew the fasteners connecting the suspension strut to the steering knuckle. Use a drive socket #19. Use a tap wrench.



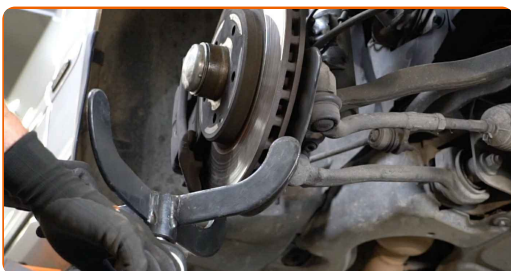
20 Remove the fastening bolts.



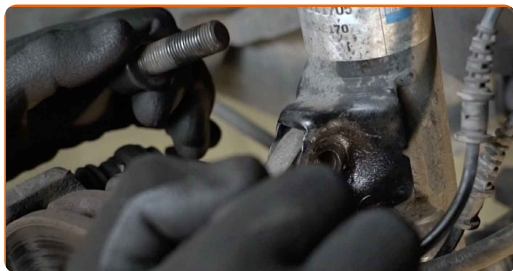
21 Disconnect the steering knuckle from the shock absorber strut. Use a crowbar.



22 Prop up the steering knuckle. Use a hydraulic transmission jack.



23 Remove the fastening bolt.



24 Disconnect the steering knuckle from the shock absorber strut. Use a crowbar.



25 Unscrew the top fastening of the shock strut mount.



AUTODOC recommends:

- Important! Hold the suspension strut while unscrewing the fastening bolts.
MERCEDES-BENZ CLK Convertible (A209)

26 Remove the suspension strut.



27

Set the shock absorber strut on the spring compressor tool.



**Replacement: strut mount – MERCEDES-BENZ CLK Convertible (A209).
Professionals recommend:**

- Note that when using a spring compressor, spring coils need to be securely gripped, compressing the spring on the opposite sides.
- Ensure the correct position of the spring in the retainer.
- Make sure that the spring coils tightly entered the lock handles.

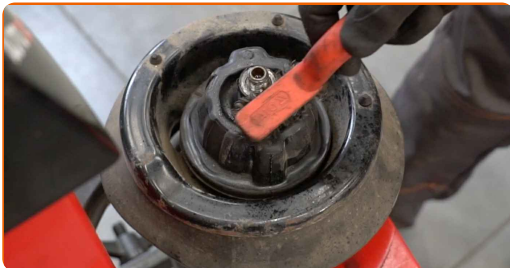
28

Compress the spring.



29

Treat the shock strut rod. Use a wire brush. Use WD-40 spray.



- 30** Remove the strut piston rod nut. Use a 14X2.5-mm strut nut socket. Use a drive socket #21. Use HEX No.H7. Use a ratchet wrench.



- 31** Remove the top strut mount.



AUTODOC recommends:

- Replacement: strut mount – MERCEDES-BENZ CLK Convertible (A209). Carefully inspect the mount, the boot, and the bump stop of the shock absorber. Replace if necessary.

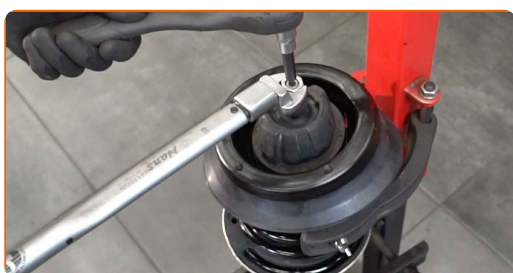
- 32** Treat the upper shock strut mount. Use WD-40 spray.



33 Install a new top shock strut mount.



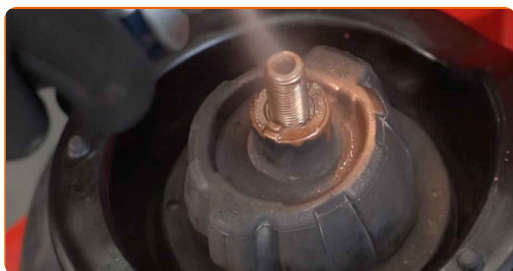
34 Tighten the shock strut piston rod nut. Use a 14X2.5-mm strut nut socket. Use a drive socket #21. Use HEX No.H6. Use a torque wrench. Tighten it to 20 Nm torque.



AUTODOC recommends:

- Replacement: strut mount – MERCEDES-BENZ CLK Convertible (A209). Be sure to position the filtering element correctly. Avoid misalignment.

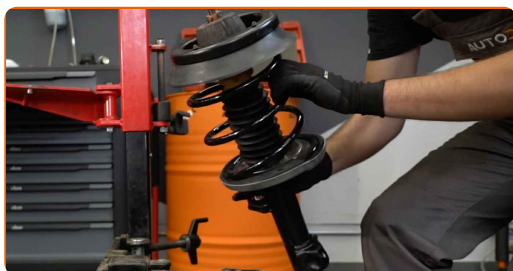
35 Treat the shock strut rod. Use copper grease.



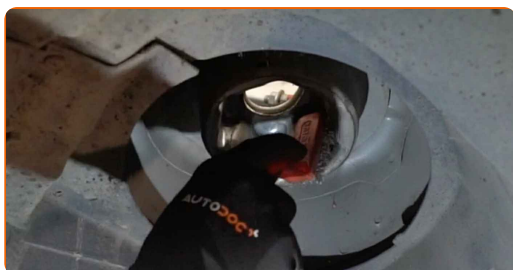
36 Decompress the spring.



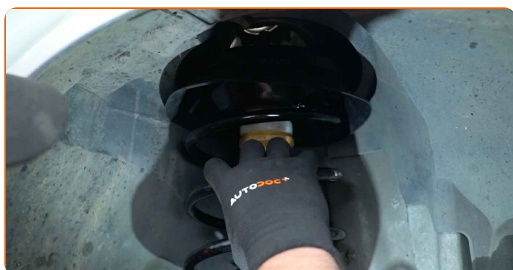
37 Remove the assembled shock strut.



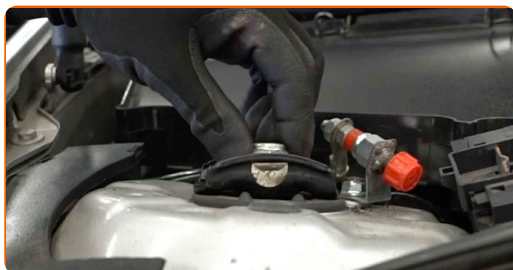
38 Treat the mounting seats of the shock strut. Use a wire brush. Use WD-40 spray.



39 Install the shock strut into the wheel arch.



40 Screw the top fastening of the shock strut mount. Do not tighten it.



AUTODOC recommends:

- MERCEDES-BENZ CLK Convertible (A209) – To avoid injury, hold the suspension strut while screwing in the fastening bolts.

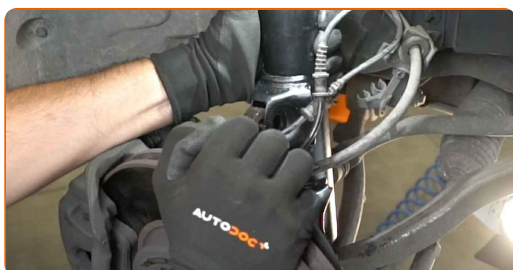
41

Treat the mounting seats of the shock strut. Use a wire brush. Use WD-40 spray.



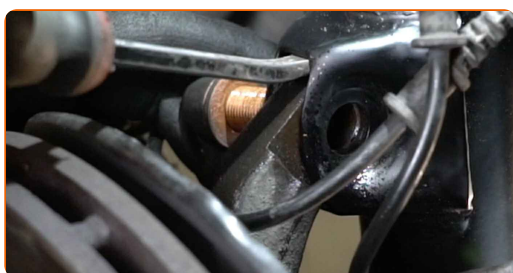
42

Fix the shock absorber strut on the steering knuckle. Use a crowbar.



43

Install the fastening bolt.

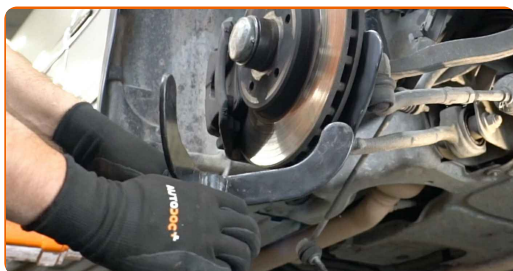


44

Screw in the upper fastener connecting the shock strut to the steering knuckle. Use a drive socket #21. Use HEX No.H12. Use a ratchet wrench.



45 Remove the support from under the steering knuckle.

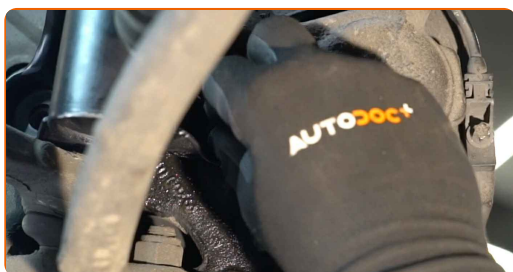


AUTODOC recommends:

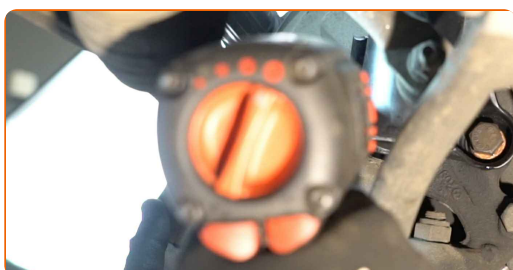
- Replacement: strut mount – MERCEDES-BENZ CLK Convertible (A209). Lower the transmission jack smoothly, without jerks, to avoid damaging components and mechanisms.

46 Fix the shock absorber strut on the steering knuckle. Use a crowbar.

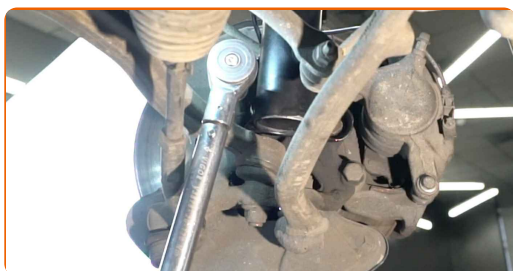
47 Install the fastening bolts.



48 Screw in the fasteners connecting the suspension strut to the steering knuckle. Use a drive socket #19. Use a ratchet wrench.



- 49 Tighten the lower fasteners connecting the shock strut to the steering knuckle. Use a drive socket #19. Use a torque wrench. Tighten it to 110 Nm torque.



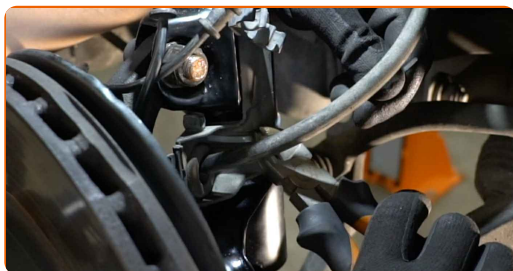
- 50 Tighten the upper fastener connecting the shock strut to the steering knuckle. Use a drive socket #21. Use HEX No.H12. Use a torque wrench. Tighten it to 100 Nm torque.+90°



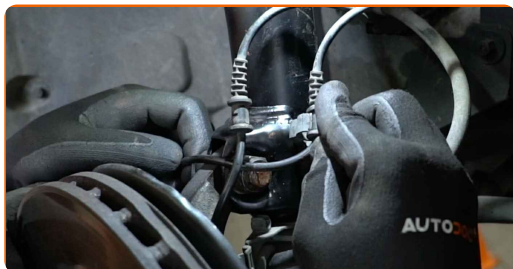
AUTODOC recommends:

- Important! Be sure to use new fasteners.

- 51 Secure the brake hose bracket. Use nippers.



52 Connect the ABS sensor wiring.

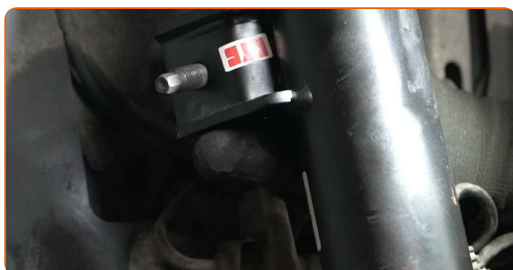


53 Connect the brake pad wear sensor wire.



54 Clean the mounting seats of the stabiliser link. Use a wire brush. Use WD-40 spray.

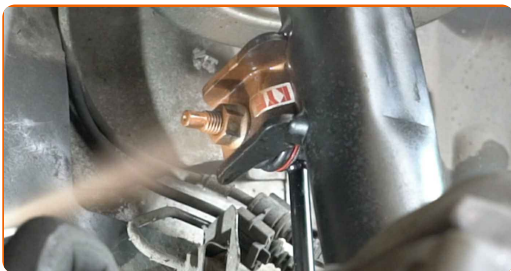
55 Install the transverse stabilizer link.



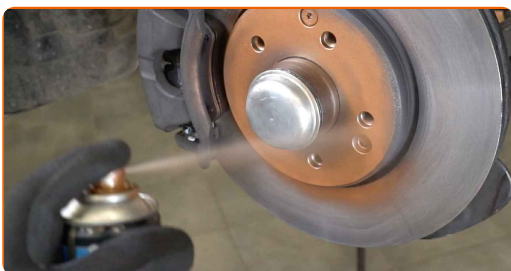
56 Tighten the fastener connecting the stabilizer link to the shock strut. Use a drive socket #16. Use a torque wrench. Tighten it to 60 Nm torque.



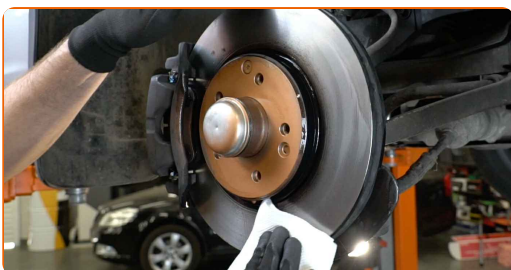
57 Treat all joints of the stabiliser link. Treat the shock strut fasteners. Use copper grease.



58 Treat the surface where the brake disc contacts the wheel rim. Use copper grease.



59 Clean the brake disk surface. Use a brake cleaner.



AUTODOC recommends:

- Replacement: strut mount – MERCEDES-BENZ CLK Convertible (A209). After applying the spray, wait a few minutes.

60 Install the wheel.



AUTODOC recommends:

- Warning! To avoid injury, hold the wheel while screwing in the fastening bolts on the car. MERCEDES-BENZ CLK Convertible (A209)

61

Screw in the wheel bolts. Use wheel impact socket #17.



62

Lower the car and working in a cross order, tighten the wheel bolts. Use wheel impact socket #17. Use a torque wrench. Tighten it to 110 Nm torque.



63

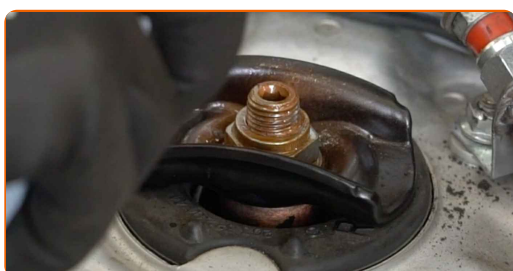
Remove the jacks and chocks.



- 64 Tighten the upper fastener of the shock absorber strut mount. Use a combination spanner #21. Use HEX No.H6. Use a torque wrench. Tighten it to 60 Nm torque.



- 65 Treat the fasteners of the shock strut mount. Use copper grease.



- 66 Remove the fender protection cover.

- 67 Close the hood.

WELL DONE! 

VIEW MORE TUTORIALS

AUTODOC – TOP QUALITY AND AFFORDABLE CAR PARTS ONLINE

AUTODOC MOBILE APP: GREAT DEALS AND CONVENIENT SHOPPING



+ AUTODOC

GET IT ON
Google Play

 Download on the
App Store

Download

A GREAT SELECTION OF SPARE PARTS FOR YOUR CAR

STRUT MOUNT: A WIDE SELECTION

DISCLAIMER:

The document contains only general recommendations that may be useful for you when you perform repair or replacement work. AUTODOC shall not be liable for any loss, injury, damage of property occurring in the repair or replacement process due to incorrect use or misinterpretation of the provided information.

AUTODOC shall not be liable for any possible mistakes and uncertainties in this guide. The information provided is for information purposes only and cannot replace advice from specialists.

AUTODOC shall not be liable for incorrect or hazardous usage of equipment, tools and car parts. AUTODOC strongly recommends to be careful and observe the safety rules when performing repair or replacement works. Remember: usage of low quality auto parts does not guarantee you the appropriate level of road safety.

© Copyright 2022 – All the contents of this website, in particular texts, photographs and graphics, are protected by copyright. All rights, including reproduction, publication, editing and translation rights, are reserved by AUTODOC GmbH.