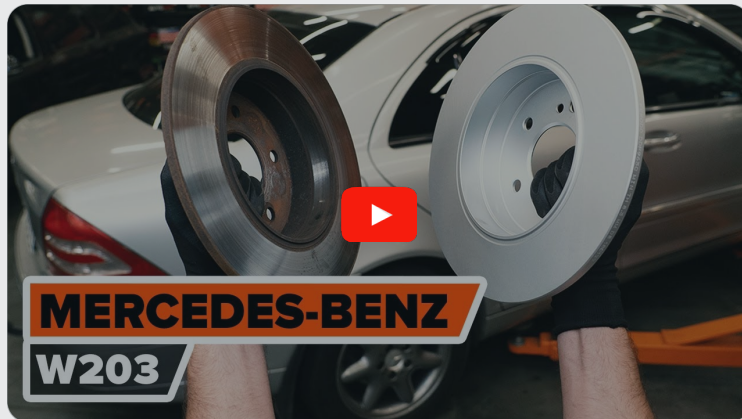




How to change rear
brake discs on
MERCEDES-BENZ CLK
Convertible (A209) –
replacement guide

SIMILAR VIDEO TUTORIAL



This video shows the replacement procedure of a similar car part on another vehicle

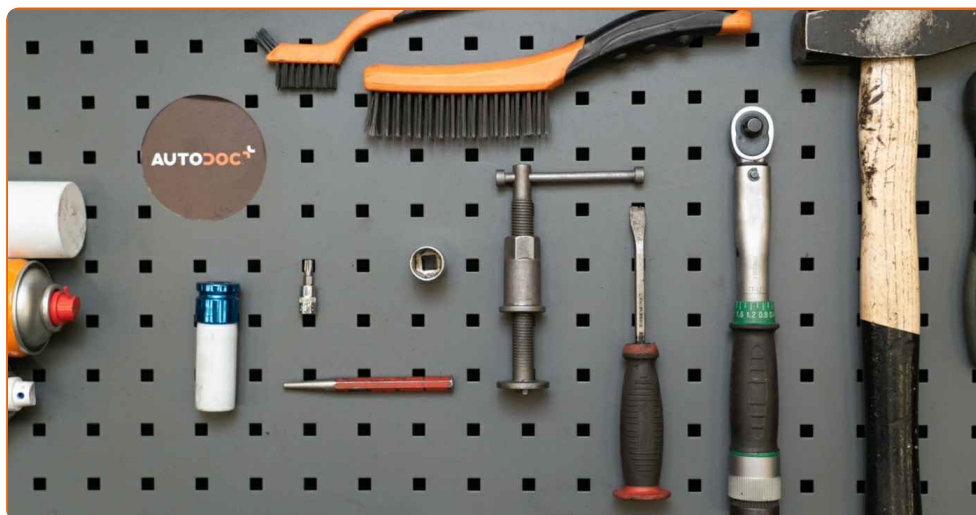
i Important!

This replacement procedure can be used for:
 MERCEDES-BENZ CLK Convertible (A209) CLK 200 Kompressor (209.442),
 MERCEDES-BENZ CLK Convertible (A209) CLK 350 (209.456), MERCEDES-BENZ CLK
 Convertible (A209) CLK 280 (209.454), MERCEDES-BENZ CLK Convertible (A209) CLK
 320 CDI (209.420), MERCEDES-BENZ CLK Convertible (A209) CLK 200 Kompressor
 (209.441)

The steps may slightly vary depending on the car design.

This tutorial was created based on the replacement procedure for a similar car part
 on: MERCEDES-BENZ C-Class Saloon (W203) C 240 (203.061)

REPLACEMENT: BRAKE DISCS – MERCEDES-BENZ CLK CONVERTIBLE (A209). TOOLS YOU'LL NEED:



- Wire brush
- Nylon cleaning brush
- WD-40 spray
- All-purpose cleaning spray
- Brake cleaner
- Copper grease
- Torque wrench
- Drive socket # 18
- Torx bit T30
- Wheel impact socket #17
- Ratchet wrench
- Hammer
- Pin punch
- Impact screwdriver
- Crow bar
- Wheel chock

Buy tools

**Replacement: brake discs – MERCEDES-BENZ CLK Convertible (A209).
Professionals recommend:**

- Replace the brake disks on the car MERCEDES-BENZ CLK Convertible (A209) in complete set for each axis. Regardless of the state of components. This will ensure even braking.
- The replacement procedure is identical for both brake disks on the same axle.
- When changing the brake discs, always replace the brake pads.
- Please note: all work on the car – MERCEDES-BENZ CLK Convertible (A209) – should be done with the engine switched off.

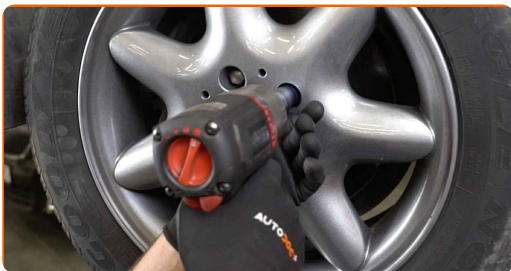
CARRY OUT REPLACEMENT IN THE FOLLOWING ORDER:

- 1 Open the bonnet. Unscrew the brake fluid reservoir cap.
- 2 Secure the wheels with chocks.
- 3 Loosen the wheel mounting bolts. Use wheel impact socket #17.



- 4 Raise the rear of the car and secure on supports.

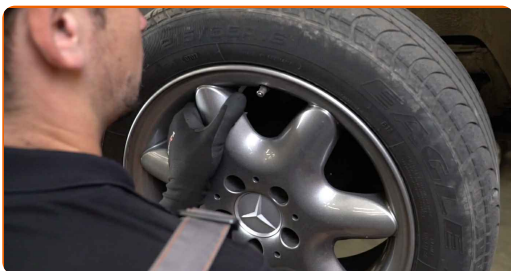
5 Unscrew the wheel bolts.



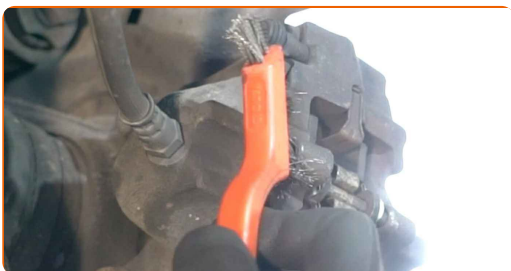
AUTODOC recommends:

- Warning! To avoid injury, hold the wheel while unscrewing the fastening bolts.
MERCEDES-BENZ CLK Convertible (A209)

6 Remove the wheel.



7 Clean the brake pads fasteners. Use a wire brush. Use all-purpose cleaning spray.

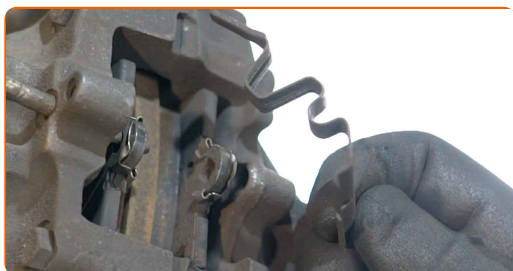


8

Remove the brake pad retaining pin. Use a pin punch. Use a hammer.

**9**

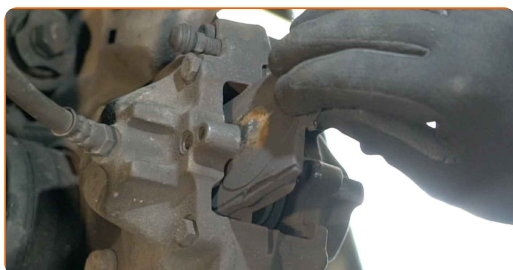
Remove the retaining spring of the brake pads.

**10**

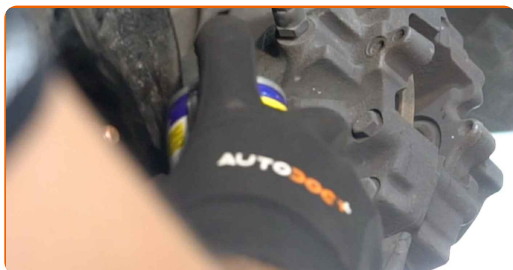
Spread the brake pads. Use a crowbar.

**11**

Remove the brake pads.

**12**

Clean the brake caliper fasteners. Use a wire brush. Use WD-40 spray.



13

Unscrew the brake caliper fastening. Use a drive socket #18. Use a ratchet wrench.



14

Remove the brake caliper.



**Replacement: brake discs – MERCEDES-BENZ CLK Convertible (A209).
Professionals recommend:**

- Tie the caliper to the suspension or to the body with a wire without disconnecting from the brake hose to prevent depressurization of the brake system.
- Make sure that the brake caliper is not hanging on the brake hose.
- Don't press the brake pedal after the brake caliper has been removed. As a result, the piston can fall out from the brake cylinder, and brake fluid leakage and depressurization of the system may occur.

15 Clean the brake disc fasteners. Use a wire brush. Use WD-40 spray.



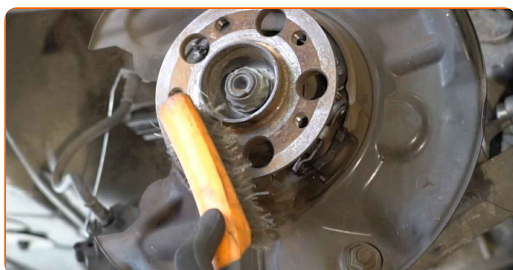
16 Unscrew the brake disc fastening. Use Torx T30. Use an impact screwdriver.



17 Remove the brake disc.



18 Clean the hub. Use a wire brush. Treat the contacting surface. Use copper grease.



19 Install the brake disc.



20 Tighten the brake disc fastening. Use Torx T30. Use a torque wrench. Tighten it to 9 Nm torque.



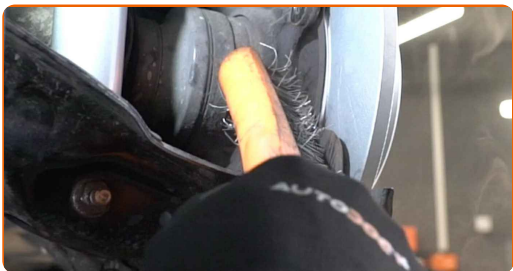
21 Treat the brake caliper piston. Use a nylon cleaning brush. Use a brake cleaner.



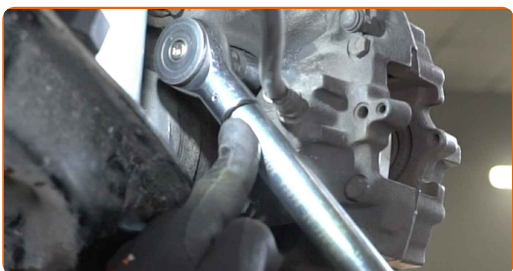
AUTODOC recommends:

- Replacement: brake discs – MERCEDES-BENZ CLK Convertible (A209). After applying the spray, wait a few minutes.

22 Clean the mounting seat of the brake caliper. Use a wire brush. Use WD-40 spray.



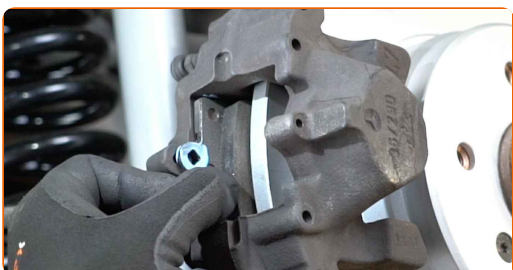
23 Install the brake caliper and fix it. Use a drive socket #18. Use a torque wrench. Tighten it to 55 Nm torque.



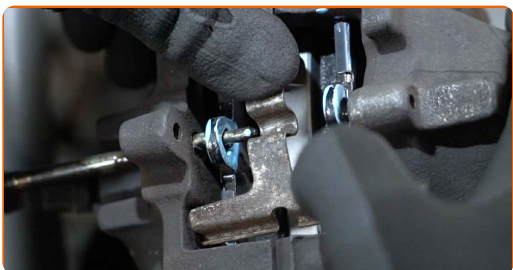
24 Press in the brake caliper piston. Use a crowbar (2 pieces).



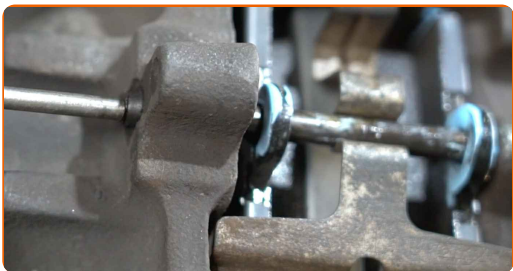
25 Install the brake pads.



26 Install the retaining spring of the brake pads.



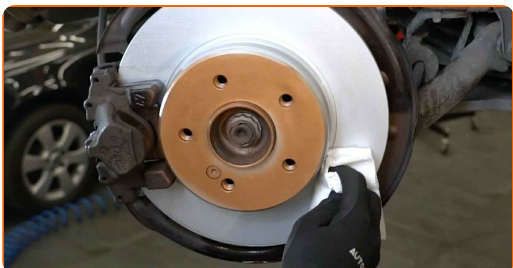
27 Install the brake pad retaining pin. Use a pin punch. Use a hammer.



28 Treat the surface where the brake disc contacts the wheel rim. Use copper grease.



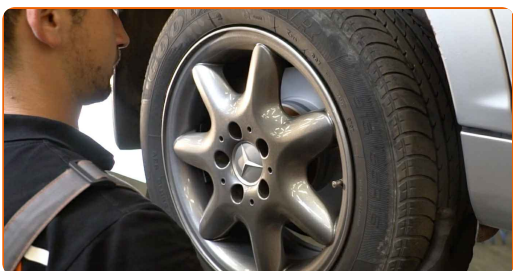
29 Clean the brake disk surface. Use a brake cleaner.



Replacement: brake discs – MERCEDES-BENZ CLK Convertible (A209). Tip:

- After applying the spray, wait a few minutes.

30 Install the wheel.



AUTODOC recommends:

- Important! Hold the wheel while screwing in the fastening bolts. MERCEDES-BENZ CLK Convertible (A209)

31

Screw in the wheel bolts. Use wheel impact socket #17.



32

Lower the car and working in a cross order, tighten the wheel bolts. Use wheel impact socket #17. Use a torque wrench. Tighten it to 110 nm torque.



33

Remove the jacks and chocks.



**Replacement: brake discs – MERCEDES-BENZ CLK Convertible (A209).
AUTODOC experts recommend:**

- Check the brake fluid level in the expansion tank and refill if necessary.

34 Tighten the brake fluid reservoir cap. Close the hood.

AUTODOC recommends:

- MERCEDES-BENZ CLK Convertible (A209) – Press the brake pedal several times with the engine shut down until you feel the resistance built up.

WELL DONE! 

[VIEW MORE TUTORIALS](#)

AUTODOC – TOP QUALITY AND AFFORDABLE CAR PARTS ONLINE

AUTODOC MOBILE APP: GREAT DEALS AND CONVENIENT SHOPPING



A GREAT SELECTION OF SPARE PARTS FOR YOUR CAR

BRAKE DISCS: A WIDE SELECTION

DISCLAIMER:

The document contains only general recommendations that may be useful for you when you perform repair or replacement work. AUTODOC shall not be liable for any loss, injury, damage of property occurring in the repair or replacement process due to incorrect use or misinterpretation of the provided information.

AUTODOC shall not be liable for any possible mistakes and uncertainties in this guide. The information provided is for information purposes only and cannot replace advice from specialists.

AUTODOC shall not be liable for incorrect or hazardous usage of equipment, tools and car parts. AUTODOC strongly recommends to be careful and observe the safety rules when performing repair or replacement works. Remember: usage of low quality auto parts does not guarantee you the appropriate level of road safety.

© Copyright 2022 – All the contents of this website, in particular texts, photographs and graphics, are protected by copyright. All rights, including reproduction, publication, editing and translation rights, are reserved by AUTODOC GmbH.