



How to change auxiliary  
indicator on **MERCEDES-  
BENZ C-Class T-modell  
(S204)** – replacement  
guide

### SIMILAR VIDEO TUTORIAL



This video shows the replacement procedure of a similar car part on another vehicle

### **i Important!**

This replacement procedure can be used for:

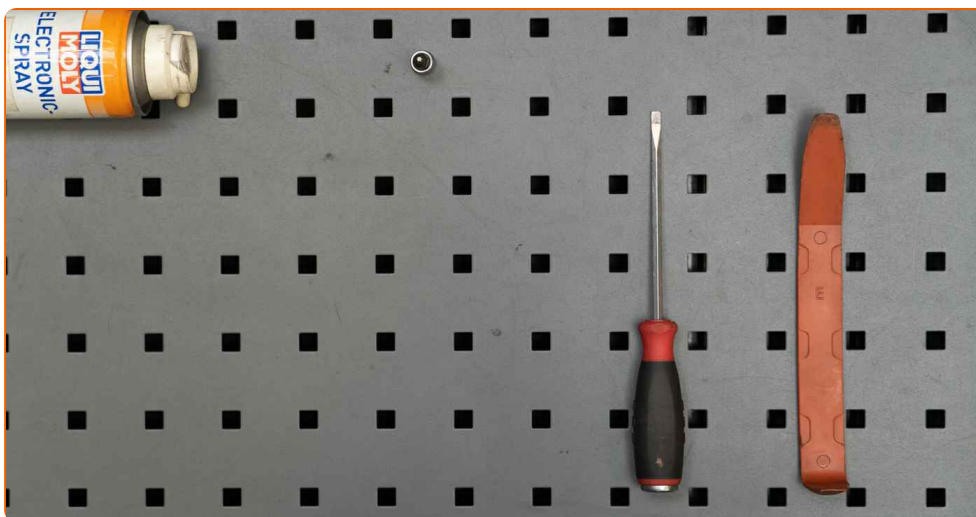
MERCEDES-BENZ C-Class T-modell (S204) C 180 Kompressor (204.246), MERCEDES-BENZ C-Class T-modell (S204) C 200 Kompressor (204.241), MERCEDES-BENZ C-Class T-modell (S204) C 230 (204.252), MERCEDES-BENZ C-Class T-modell (S204) C 280 (204.254), MERCEDES-BENZ C-Class T-modell (S204) C 350 (204.256), MERCEDES-BENZ C-Class T-modell (S204) C 200 CDI (204.207), MERCEDES-BENZ C-Class T-modell (S204) C 220 CDI (204.208), MERCEDES-BENZ C-Class T-modell (S204) C 320 CDI (204.222), MERCEDES-BENZ C-Class T-modell (S204) C 320 CDI 4-matic (204.289), MERCEDES-BENZ C-Class T-modell (S204) C 180 Kompressor (204.245), MERCEDES-BENZ C-Class T-modell (S204) C 220 CDI (204.202), MERCEDES-BENZ C-Class T-modell (S204) C 250 CDI (204.203), MERCEDES-BENZ C-Class T-modell (S204) C 300 (204.254), MERCEDES-BENZ C-Class T-modell (S204) C 350 CDI, MERCEDES-BENZ C-Class T-modell (S204) C 200 CGI (204.248), (+ 2)

The steps may slightly vary depending on the car design.

Please note that this tutorial was created based on the replacement procedure for this car part on a car with a similar design.

This tutorial was created based on the replacement procedure for a similar car part on: MERCEDES-BENZ C-Class Saloon (W204) C 220 CDI (204.008)

REPLACEMENT: AUXILIARY INDICATOR – MERCEDES-BENZ C-CLASS T-MODELL (S204). TOOLS YOU MIGHT NEED:



- Electronic spray
- Torx bit T10
- Flat screwdriver
- Plastic trim tool
- Fender cover

**Buy tools**

Replacement: auxiliary indicator – MERCEDES-BENZ C-Class T-modell (S204).  
Tip from AUTODOC:

- Replace both turn signal repeater lights at the same time.
- The procedure for replacing the right and left turn signal repeater lights is the same.
- Please note: all work on the car – MERCEDES-BENZ C-Class T-modell (S204) – should be done with the engine switched off.

**CARRY OUT REPLACEMENT IN THE FOLLOWING ORDER:**

**1** Switch on the ignition.

**2** Turn the mirror glass all the way inward.

**3** Switch off the ignition.

**4** Use a fender protection cover to prevent damaging paintwork and plastic parts of the car.



**5** Carefully release the mirror glass from its attachment. Use a plastic trim tool.

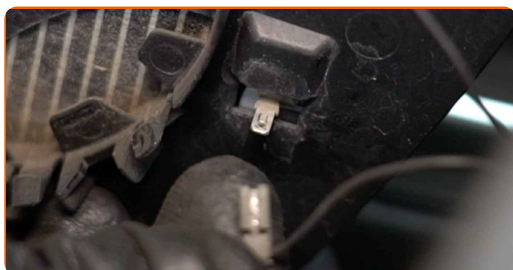


**6** Remove the mirror glass.

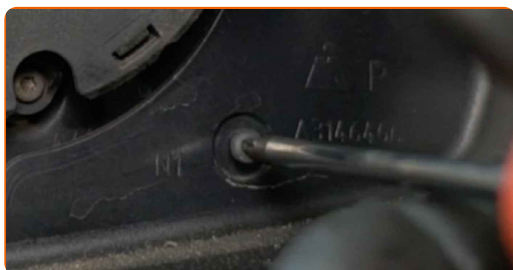
**AUTODOC recommends:**

- Replacement: auxiliary indicator – MERCEDES-BENZ C-Class T-modell (S204). Do not use excessive force when removing the part as this may damage it.

**7** Detach the mirror heating connectors.



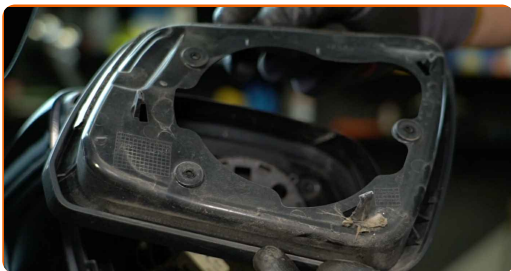
**8** Unscrew the mirror cover frame fasteners. Use Torx T10.



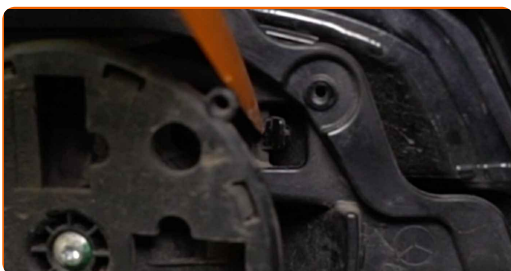
**9** Release the mirror cover frame tabs. Use a flat screwdriver.



**10** Remove the mirror cover frame.



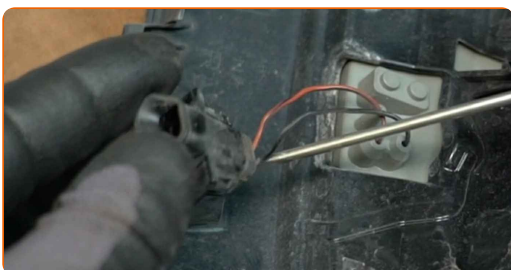
**11** Release the mirror cover frame tabs. Use a plastic trim tool.



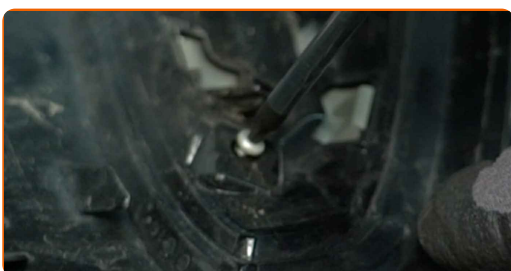
**12** Remove the wing mirror cover.



**13** Detach the connector of the turn signal repeater light. Use a flat screwdriver.



**14** Unscrew the fasteners of the turn signal repeater light from the mirror cover. Use Torx T10.



**15** Release the tabs of the turn signal repeater light from the mirror cover.



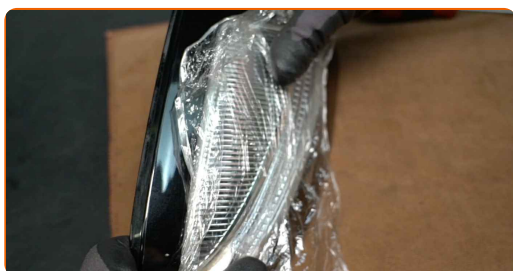
**16** Remove the turn signal repeater light.



**AUTODOC recommends:**

- Replacement: auxiliary indicator – MERCEDES-BENZ C-Class T-modell (S204). To avoid damaging the part when removing it, do not use excessive force.

**17** Install a new turn signal repeater light.



**AUTODOC recommends:**

- When installing, do not use excessive force to avoid damage to the part.



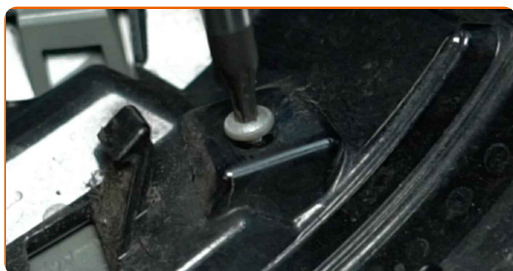
- 18** Snap the tabs of the turn signal repeater light back on the mirror cover. Make sure you hear a click indicating that it is locked in place.



**AUTODOC recommends:**

- Replacement: auxiliary indicator – MERCEDES-BENZ C-Class T-modell (S204). Do not use excessive force during installation. This may damage the part.

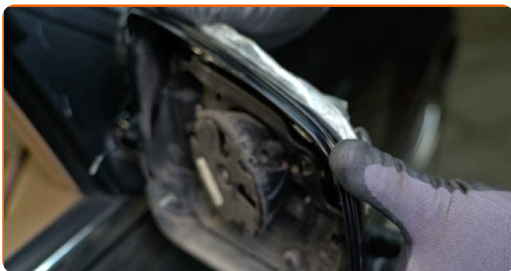
- 19** Screw in the fasteners connecting the turn signal repeater light to the mirror cover. Use Torx T10.



- 20** Attach the connector of the turn signal repeater light.



**21** Install the wing mirror housing.



**22** Snap the tabs of the turn signal repeater light back on the mirror cover. Make sure you hear a click indicating that it is locked in place.

**AUTODOC recommends:**

- When installing, do not use excessive force to avoid damage to the part.

**23** Install the mirror cover frame.



**24** Snap the mirror cover frame tabs back into place. Make sure you hear a click indicating that it is locked in place.

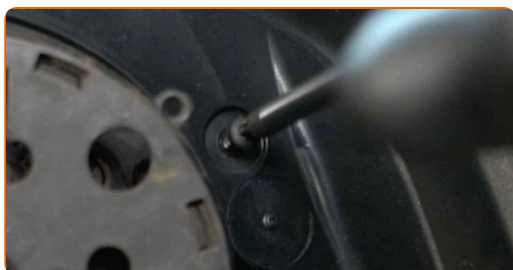


Replacement: auxiliary indicator – MERCEDES-BENZ C-Class T-modell (S204).  
Tip from AUTODOC experts:

- When installing, do not use excessive force to avoid damage to the part.

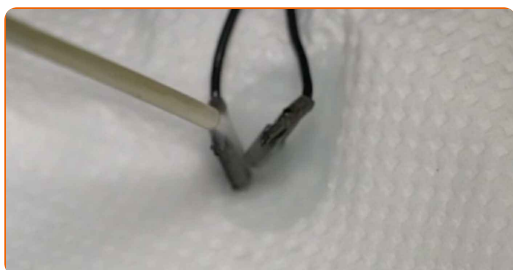
25

Screw in the mirror cover frame fasteners. Use Torx T10.



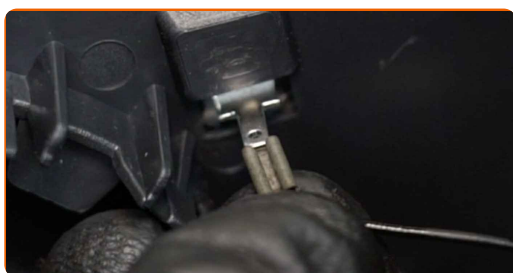
26

Treat the mirror heating connectors. Use dielectric grease.



27

Attach the mirror heating connectors.



28

Fit the mirror glass into position. Make sure you hear a click indicating that it is locked in place.



Replacement: auxiliary indicator – MERCEDES-BENZ C-Class T-modell (S204).  
AUTODOC recommends:

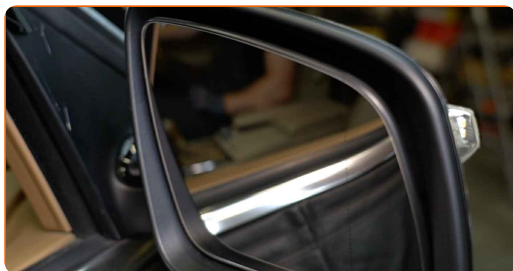
- When installing, do not use excessive force to avoid damage to the part.
- Make sure the mirror glass is positioned correctly. It should be aligned with the locking tabs on the housing.

29

Switch on the ignition.

30

Adjust the mirror glass.



31

Check the operation of the turn signal repeater light.



32

Switch off the ignition.

**WELL DONE!** 

[VIEW MORE TUTORIALS](#)

# AUTODOC – TOP QUALITY AND AFFORDABLE CAR PARTS ONLINE

**AUTODOC MOBILE APP: GREAT DEALS AND CONVENIENT SHOPPING**



**+ AUTODOC**

GET IT ON  
**Google Play**

 Download on the  
**App Store**

**Download**

**A GREAT SELECTION OF SPARE PARTS FOR YOUR CAR**

**AUXILIARY INDICATOR: A WIDE SELECTION**

## **DISCLAIMER:**

The document contains only general recommendations that may be useful for you when you perform repair or replacement work. AUTODOC shall not be liable for any loss, injury, damage of property occurring in the repair or replacement process due to incorrect use or misinterpretation of the provided information.

AUTODOC shall not be liable for any possible mistakes and uncertainties in this guide. The information provided is for information purposes only and cannot replace advice from specialists.

AUTODOC shall not be liable for incorrect or hazardous usage of equipment, tools and car parts. AUTODOC strongly recommends to be careful and observe the safety rules when performing repair or replacement works. Remember: usage of low quality auto parts does not guarantee you the appropriate level of road safety.

© Copyright 2022 – All the contents of this website, in particular texts, photographs and graphics, are protected by copyright. All rights, including reproduction, publication, editing and translation rights, are reserved by AUTODOC GmbH.