



How to change rear
lower arm on
**MERCEDES-BENZ C-
Class T-modell (S204)** –
replacement guide

SIMILAR VIDEO TUTORIAL



This video shows the replacement procedure of a similar car part on another vehicle

Important!

This replacement procedure can be used for:

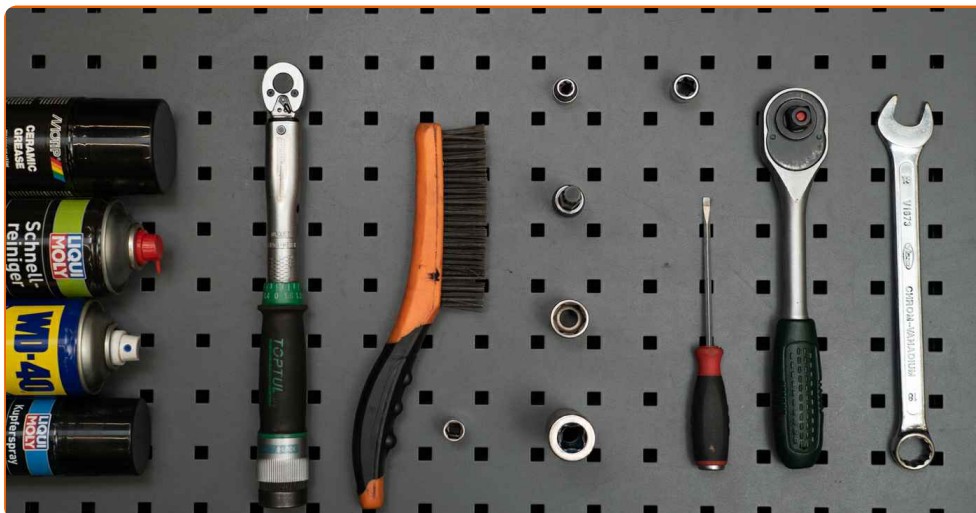
MERCEDES-BENZ C-Class T-modell (S204) C 250 CGI (204.247), MERCEDES-BENZ C-Class T-modell (S204) C 200 CDI (204.201), MERCEDES-BENZ C-Class T-modell (S204) C 180 CGI (204.249), MERCEDES-BENZ C-Class T-modell (S204) C 250 CDI 4-matic (204.282), MERCEDES-BENZ C-Class T-modell (S204) C 180 CDI (204.200), MERCEDES-BENZ C-Class T-modell (S204) C 350 CDI (204.223), MERCEDES-BENZ C-Class T-modell (S204) C 350 CGI (204.257), MERCEDES-BENZ C-Class T-modell (S204) C 63 AMG (204.277), MERCEDES-BENZ C-Class T-modell (S204) C 180 Kompressor (204.246), MERCEDES-BENZ C-Class T-modell (S204) C 200 Kompressor (204.241), MERCEDES-BENZ C-Class T-modell (S204) C 230 (204.252), MERCEDES-BENZ C-Class T-modell (S204) C 280 (204.254), MERCEDES-BENZ C-Class T-modell (S204) C 350 (204.256), MERCEDES-BENZ C-Class T-modell (S204) C 200 CDI (204.207), MERCEDES-BENZ C-Class T-modell (S204) C 220 CDI (204.208), (+ 15)

The steps may slightly vary depending on the car design.

Please note that this tutorial was created based on the replacement procedure for this car part on a car with a similar design.

This tutorial was created based on the replacement procedure for a similar car part on: MERCEDES-BENZ C-Class Saloon (W204) C 220 CDI (204.008)

REPLACEMENT: REAR LOWER ARM – MERCEDES-BENZ C-CLASS T-MODELL (S204). TOOLS YOU MIGHT NEED:



- Wire brush
- WD-40 spray
- Brake cleaner
- Ceramic grease
- Copper grease
- Torque wrench
- Combination spanner #18
- Drive socket # 10
- Drive socket # 18
- Torx bit E10
- Torx bit E14
- XZN socket bit # 12
- Wheel impact socket #17
- Ratchet wrench
- Flat screwdriver
- Hydraulic transmission jack
- Wheel chock

Buy tools

Replacement: rear lower arm – MERCEDES-BENZ C-Class T-modell (S204). Tip from AUTODOC:

- The replacement procedure is identical for the left and right lower control arms.
- Please note: all work on the car – MERCEDES-BENZ C-Class T-modell (S204) – should be done with the engine switched off.

CARRY OUT REPLACEMENT IN THE FOLLOWING ORDER:

1 Secure the wheels with chocks.

2 Loosen the wheel mounting bolts. Use wheel impact socket #17.



3 Raise the car.

Replacement: rear lower arm – MERCEDES-BENZ C-Class T-modell (S204). AUTODOC experts recommend:

- If you are using a jack, make sure it rests on a flat surface without any unevenness.
- Be sure to additionally secure the car with jack stands.

4

Unscrew the wheel bolts.



AUTODOC recommends:

- Warning! To avoid injury, hold the wheel while unscrewing the fastening bolts.
MERCEDES-BENZ C-Class T-modell (S204)

5

Remove the wheel.

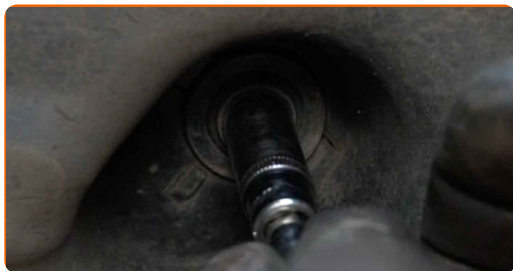


6

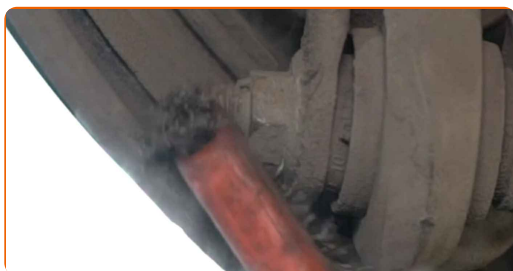
Unclip the fasteners and remove the suspension arm plastic cover. Use a flat screwdriver.



7 Unscrew the fasteners of the underbody plastic cover. Use a drive socket #10. Use a ratchet wrench.



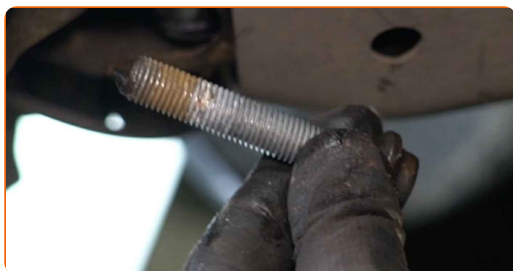
8 Clean all joints of the arm. Use a wire brush. Use WD-40 spray.



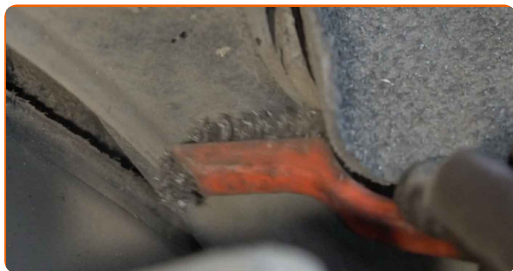
9 Unscrew the fastener that connects the suspension arm to the stub axle. Use a combination spanner #18. Use XZN #12. Use a ratchet wrench.



10 Remove the fastening bolt.



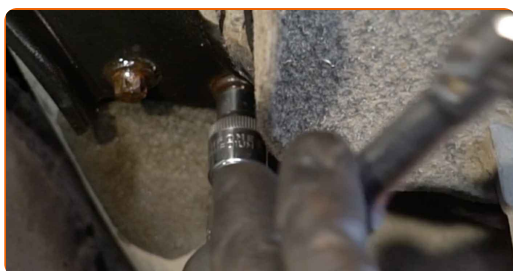
11 Clean the subframe bracket fasteners. Use a wire brush. Use WD-40 spray.



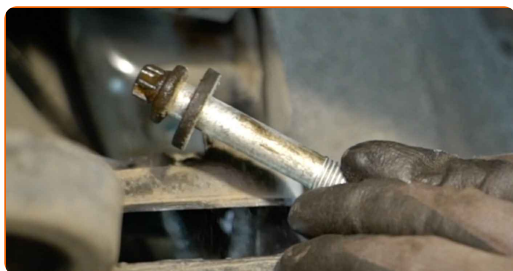
12 Support the subframe. Use a hydraulic transmission jack.



13 Unscrew the subframe bracket fasteners. This is necessary to access the upper fastening bolt of the suspension arm. Use Torx E10. Use Torx E14. Use a ratchet wrench.



14 Remove the fastening bolts.



15 Remove the subframe bracket.



16 Unscrew the fastener connecting the control arm to the subframe. Use a combination spanner #18. Use XZN #12. Use a ratchet wrench.



17 Remove the fastening bolt.



18 Remove the arm.



19

Clean the suspension arm mounting seats. Use a wire brush. Use WD-40 spray.



20

Clean the subframe bracket mounting seats. Use a wire brush. Use WD-40 spray.



21

Install a new arm.



Replacement: rear lower arm – MERCEDES-BENZ C-Class T-modell (S204).
Professionals recommend:

- During the installation process, use only new bolts and nuts.

22 Install the fastening bolts.



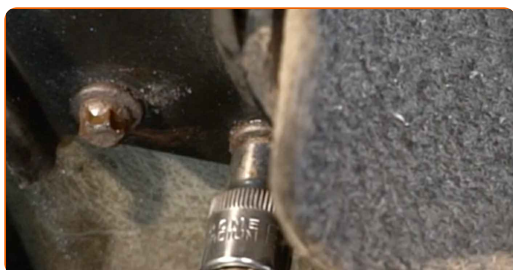
23 Install the subframe bracket.



24 Install the fastening bolts.



25 Tighten the subframe bracket fasteners. Use Torx E10. Use a torque wrench. Tighten it to 28 Nm torque.

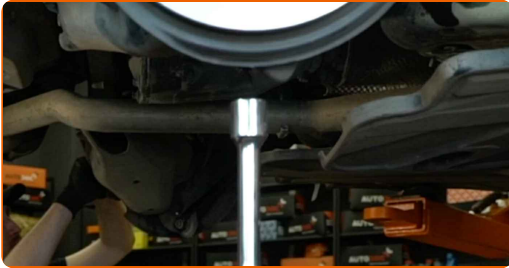


26 Tighten the subframe bracket fasteners. Use Torx E14. Use a torque wrench. Tighten it to 80 Nm torque.+90°



27

Remove the support from under the subframe.



AUTODOC recommends:

- Replacement: rear lower arm – MERCEDES-BENZ C-Class T-modell (S204). Tip:

28

Support the rear knuckle. Use a hydraulic transmission jack.

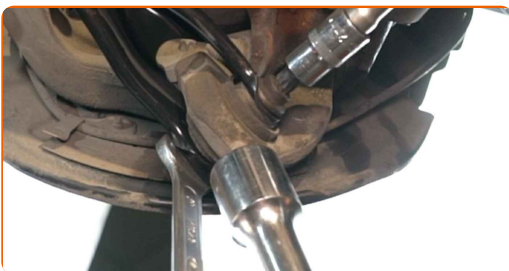


AUTODOC recommends:

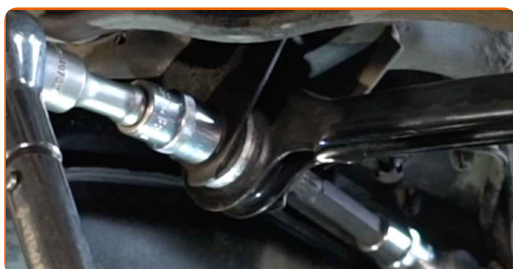
- For tightening the fasteners correctly, you have to jack up the suspension components to their working position.

29

Tighten the fastener that connects the suspension arm to the stub axle. Use a combination spanner #18. Use XZN #12. Use a torque wrench. Tighten it to 50 Nm torque.+90°



- 30** Tighten the fastener connecting the control arm to the subframe. Use a drive socket #18. Use XZN #12. Use a torque wrench. Tighten it to 50 Nm torque.+90°



- 31** Remove the support from under the rear knuckle.



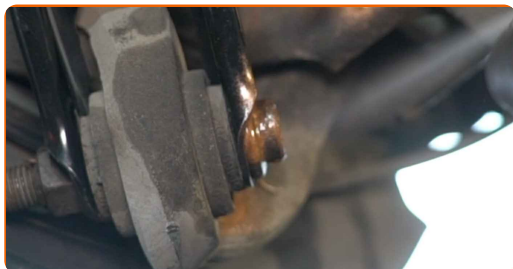
AUTODOC recommends:

- MERCEDES-BENZ C-Class T-modell (S204) – Do not lower the transmission jack sharply to avoid damaging components and mechanisms of the car.

- 32** Treat the subframe bracket fasteners. Use copper grease.



33 Treat all joints of the arm. Use copper grease.

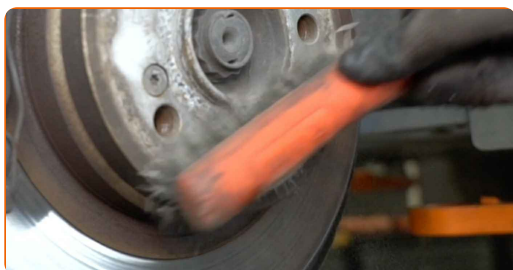


34 Screw in the fasteners of the underbody plastic cover. Use a drive socket #10. Use a ratchet wrench.



35 Install the suspension arm plastic cover.

36 Clean the wheel rim mounting seat. Use a wire brush.



37 Treat the surface where the brake disc contacts the wheel rim. Use ceramic grease.



38

Clean the brake disk surface. Use a brake cleaner.



AUTODOC recommends:

- Replacement: rear lower arm – MERCEDES-BENZ C-Class T-modell (S204). After applying the spray, wait a few minutes.

39

Install the wheel.



AUTODOC recommends:

- Warning! To avoid injury, hold the wheel while screwing in the fastening bolts on the car. MERCEDES-BENZ C-Class T-modell (S204)

40

Screw in the wheel bolts. Use wheel impact socket #17.



- 41** Lower the car and working in a cross order, tighten the wheel bolts. Use wheel impact socket #17. Use a torque wrench. Tighten it to 130 Nm torque.



- 42** Remove the jacks and chocks.



WELL DONE! 

VIEW MORE TUTORIALS

AUTODOC – TOP QUALITY AND AFFORDABLE CAR PARTS ONLINE

AUTODOC MOBILE APP: GREAT DEALS AND CONVENIENT SHOPPING



+ AUTODOC

GET IT ON
Google Play

Download on the
App Store

Download

A GREAT SELECTION OF SPARE PARTS FOR YOUR CAR

CONTROL ARM: A WIDE SELECTION

(i) DISCLAIMER:

The document contains only general recommendations that may be useful for you when you perform repair or replacement work. AUTODOC shall not be liable for any loss, injury, damage of property occurring in the repair or replacement process due to incorrect use or misinterpretation of the provided information.

AUTODOC shall not be liable for any possible mistakes and uncertainties in this guide. The information provided is for information purposes only and cannot replace advice from specialists.

AUTODOC shall not be liable for incorrect or hazardous usage of equipment, tools and car parts. AUTODOC strongly recommends to be careful and observe the safety rules when performing repair or replacement works. Remember: usage of low quality auto parts does not guarantee you the appropriate level of road safety.

© Copyright 2022 – All the contents of this website, in particular texts, photographs and graphics, are protected by copyright. All rights, including reproduction, publication, editing and translation rights, are reserved by AUTODOC GmbH.