



How to change cabin
recirculated air filter on
**MERCEDES-BENZ C-
Class Saloon (W202)** –
replacement guide

SIMILAR VIDEO TUTORIAL



This video shows the replacement procedure of a similar car part on another vehicle

Important!

This replacement procedure can be used for:

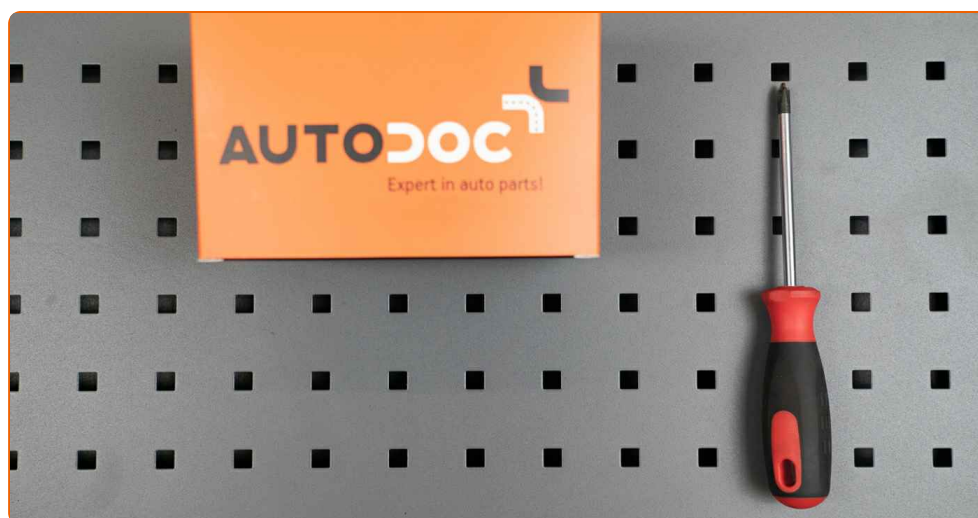
MERCEDES-BENZ C-Class Saloon (W202) C 200 D (202.120), MERCEDES-BENZ C-Class Saloon (W202) C 220 D (202.121), MERCEDES-BENZ C-Class Saloon (W202) C 250 D (202.125), MERCEDES-BENZ C-Class Saloon (W202) C 180 (202.018), MERCEDES-BENZ C-Class Saloon (W202) C 220 (202.022), MERCEDES-BENZ C-Class Saloon (W202) C 280 (202.028), MERCEDES-BENZ C-Class Saloon (W202) C 200 (202.020), MERCEDES-BENZ C-Class Saloon (W202) C 36 AMG (202.028), MERCEDES-BENZ C-Class Saloon (W202) C 230 Kompressor (202.024), MERCEDES-BENZ C-Class Saloon (W202) C 200 Kompressor (202.025), MERCEDES-BENZ C-Class Saloon (W202) C 250 Turbo-D (202.128), MERCEDES-BENZ C-Class Saloon (W202) C 230 (202.023), MERCEDES-BENZ C-Class Saloon (W202) C 200 D (202.122), MERCEDES-BENZ C-Class Saloon (W202) C 240 (202.026), MERCEDES-BENZ C-Class Saloon (W202) C 280 (202.029), (+ 4)

The steps may slightly vary depending on the car design.

Please note that this tutorial was created based on the replacement procedure for this car part on a car with a similar design.

This tutorial was created based on the replacement procedure for a similar car part on: MERCEDES-BENZ E-Class Saloon (W210) E 430 (210.070)

REPLACEMENT: CABIN RECIRCULATED AIR FILTER –
MERCEDES-BENZ C-CLASS SALOON (W202). TOOLS
YOU'LL NEED:



- Phillips screwdriver

[Buy tools](#)

Replacement: cabin recirculated air filter – MERCEDES-BENZ C-Class Saloon (W202). AUTODOC experts recommend:

- Follow the terms, recommendations and requirements of the part operation provided by the manufacturer.
- If the air flow into the cabin has sharply reduced, replace the filter before a scheduled maintenance.
- Replace the cabin recirculated air filters as a kit.
- All work should be done with the engine stopped.

REPLACEMENT: CABIN RECIRCULATED AIR FILTER – MERCEDES-BENZ C-CLASS SALOON (W202). TAKE THE FOLLOWING STEPS:

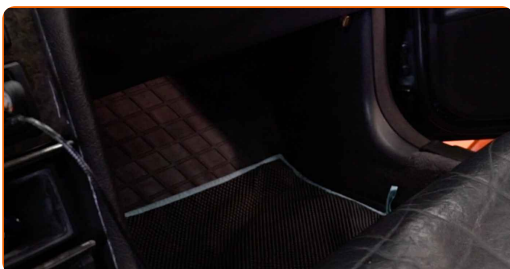
1

Move the passenger seat fully backwards.



2

Spread a cloth under the cabin filter cover to protect the interior upholstery from getting dirty.



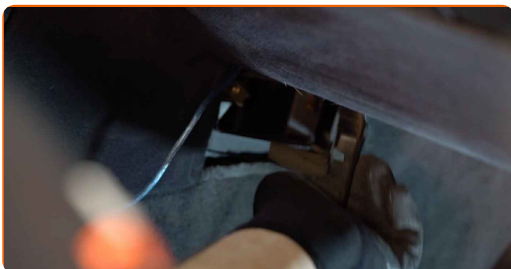
3

Unscrew the fasteners of the side trim panel on the passenger side. Use a Phillips screwdriver.



4

Pry up, carefully release from the fasteners and remove the side trim panel on the passenger side.



5

Remove the fasteners of the cabin recirculated air filters.



6

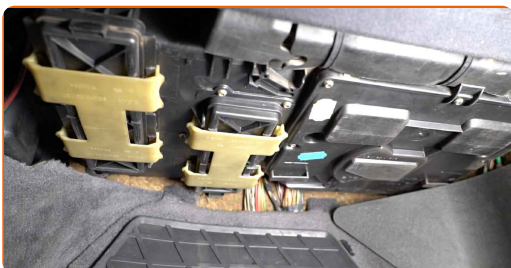
Remove the cabin recirculated air filters from the climate control unit housing.

7

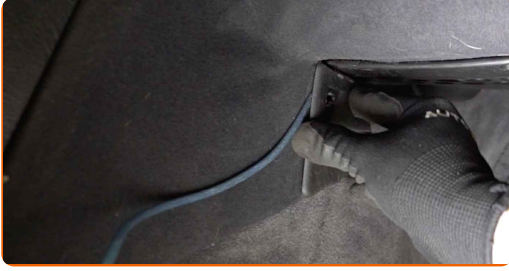
Install the cabin recirculated air filters in their mounting seats.

8

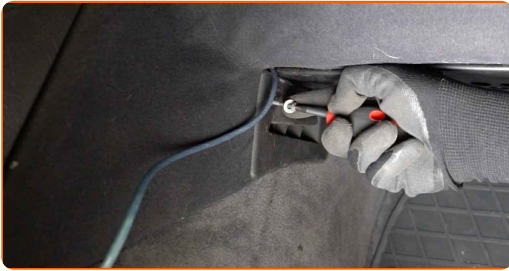
Lock the fasteners of the cabin recirculated air filters.



9 Install the side trim panel. Position the part using the guides and lock the fasteners.



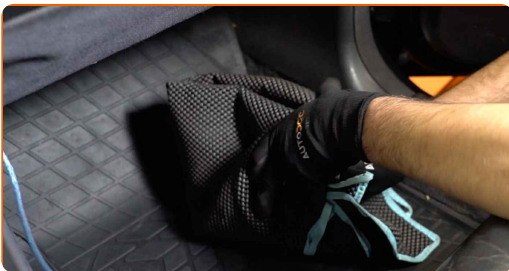
10 Screw in the fasteners of the side trim panel. Use a Phillips screwdriver.



AUTODOC recommends:

- Warning! To avoid damaging the fasteners of the car during installation, do not use excessive force. MERCEDES-BENZ C-Class Saloon (W202)

11 Remove the cloth.



12

Return the passenger seat to its initial position.



13

Switch on the ignition.

14

Switch on the air conditioning system. This is necessary in order to make sure that the component operates properly.

15

Switch off the ignition.

WELL DONE! 👍

[VIEW MORE TUTORIALS](#)

AUTODOC – TOP QUALITY AND AFFORDABLE CAR PARTS ONLINE

AUTODOC MOBILE APP: GREAT DEALS AND CONVENIENT SHOPPING

AUTODOC

GET IT ON
Google Play

Download on the
App Store

Download

A GREAT SELECTION OF SPARE PARTS FOR YOUR CAR

POLLEN FILTER: A WIDE SELECTION

(i) DISCLAIMER:

The document contains only general recommendations that may be useful for you when you perform repair or replacement work. AUTODOC shall not be liable for any loss, injury, damage of property occurring in the repair or replacement process due to incorrect use or misinterpretation of the provided information.

AUTODOC shall not be liable for any possible mistakes and uncertainties in this guide. The information provided is for information purposes only and cannot replace advice from specialists.

AUTODOC shall not be liable for incorrect or hazardous usage of equipment, tools and car parts. AUTODOC strongly recommends to be careful and observe the safety rules when performing repair or replacement works. Remember: usage of low quality auto parts does not guarantee you the appropriate level of road safety.

© Copyright 2021 – All the contents of this website, in particular texts, photographs and graphics, are protected by copyright. All rights, including reproduction, publication, editing and translation rights, are reserved by AUTODOC GmbH.