



How to change rear  
shock absorbers on  
**MERCEDES-BENZ C-  
Class Coupe (CL203)** –  
replacement guide

### SIMILAR VIDEO TUTORIAL



This video shows the replacement procedure of a similar car part on another vehicle

### **Important!**

This replacement procedure can be used for:

MERCEDES-BENZ C-Class Coupe (CL203) C 180 (203.735), MERCEDES-BENZ C-Class Coupe (CL203) C 200 Kompressor (203.745), MERCEDES-BENZ C-Class Coupe (CL203) C 220 CDI (203.706), MERCEDES-BENZ C-Class Coupe (CL203) C 230 Kompressor (203.747), MERCEDES-BENZ C-Class Coupe (CL203) C 180 Kompressor (203.746), MERCEDES-BENZ C-Class Coupe (CL203) C 200 Kompressor (203.742), MERCEDES-BENZ C-Class Coupe (CL203) C 230 Kompressor (203.740), MERCEDES-BENZ C-Class Coupe (CL203) C 320 (203.764), MERCEDES-BENZ C-Class Coupe (CL203) C 200 CGI Kompressor (203.743), MERCEDES-BENZ C-Class Coupe (CL203) C 200 CDI (203.707), MERCEDES-BENZ C-Class Coupe (CL203) C 220 CDI (203.708), MERCEDES-BENZ C-Class Coupe (CL203) C 350 (203.756), MERCEDES-BENZ C-Class Coupe (CL203) C 230 (203.752), MERCEDES-BENZ C-Class Coupe (CL203) C 160 Kompressor (203.730), MERCEDES-BENZ C-Class Coupe (CL203) C 220, (+ 1)

The steps may slightly vary depending on the car design.

Please note that this tutorial was created based on the replacement procedure for this car part on a car with a similar design.

This tutorial was created based on the replacement procedure for a similar car part on: MERCEDES-BENZ C-Class Saloon (W203) C 240 (203.061)

**REPLACEMENT: SHOCK ABSORBERS – MERCEDES-BENZ C-CLASS COUPE (CL203). TOOLS YOU NEED:**



- Wire brush
- WD-40 spray
- All-purpose cleaning spray
- Copper grease
- Torque wrench
- Combination spanner #16
- Combination spanner #17
- Drive socket # 10
- Drive socket # 16
- Torx bit T40
- Wheel impact socket #17
- Ratchet wrench
- Shock absorber socket #DD6
- Clip removal tool
- Hydraulic transmission jack
- Wheel chock

**Buy tools**

Replacement: shock absorbers – MERCEDES-BENZ C-Class Coupe (CL203).  
AUTODOC experts recommend:

- Both shock absorbers of the rear suspension should be replaced simultaneously.
- The replacement procedure is identical for the left and right shock absorbers of the rear suspension.
- Warning! Shut down the engine before starting any work – MERCEDES-BENZ C-Class Coupe (CL203).

**CARRY OUT REPLACEMENT IN THE FOLLOWING ORDER:**

**1** Open the boot lid.

**2** Raise the lower lining of the boot.



**3** Fold down the backrests of the rear seats.



**4**

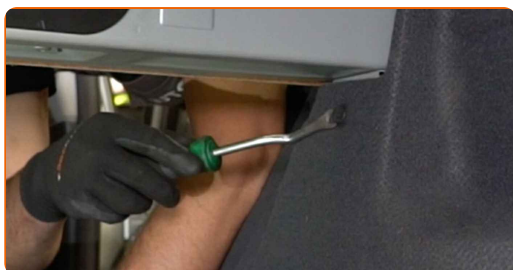
Unscrew the fastener of the central protective plastic panel. Use Torx T40. Use a ratchet wrench.

**5**

Remove the central protective plastic panel.

**6**

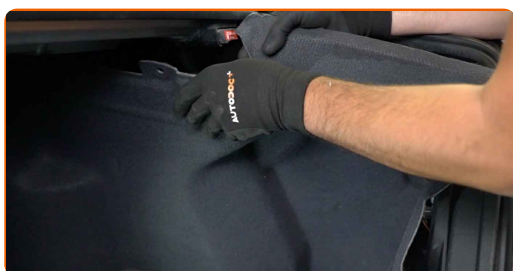
Remove the clips of the boot side lining. Use a clip removal tool.

**7**

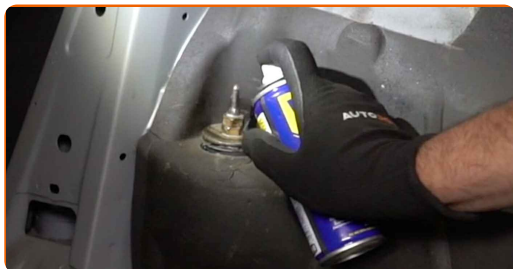
Remove the headlight rear cover.

**8**

Remove the boot side lining.



**9** Clean the shock absorber fasteners. Use a wire brush. Use WD-40 spray.



**10** Unscrew the upper fastener of the shock absorber. Use a combination spanner #17. Use a shock absorber socket #DD6. Use a ratchet wrench.



**11** Secure the wheels with chocks.

**12** Loosen the wheel mounting bolts. Use wheel impact socket #17.



**13** Raise the rear of the car and secure on supports.

**14** Unscrew the wheel bolts.

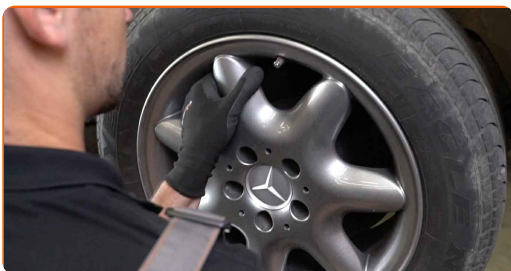


AUTODOC recommends:

- Warning! To avoid injury, hold the wheel while unscrewing the fastening bolts.  
MERCEDES-BENZ C-Class Coupe (CL203)

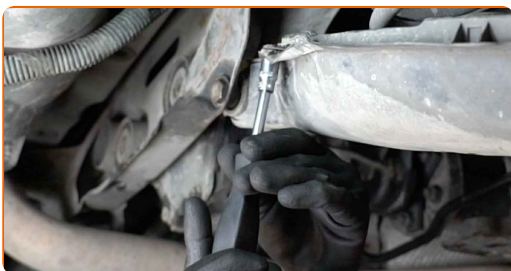
15

Remove the wheel.



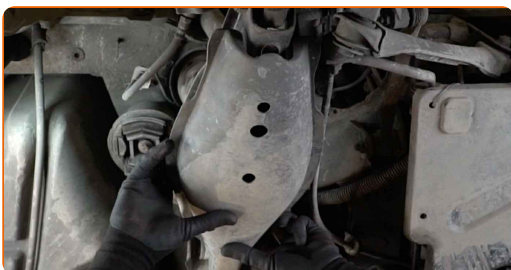
16

Unscrew the fasteners of the control arm plastic cover. Use a drive socket #10. Use a ratchet wrench.



17

Remove the control arm plastic cover.





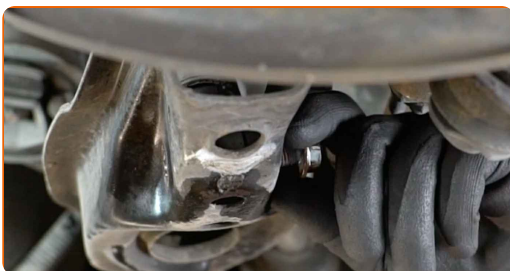
**18** Clean the shock absorber fasteners. Use a wire brush. Use WD-40 spray.



**19** Unscrew the lower fastener of the shock absorber. Use a combination spanner #16. Use a drive socket #16. Use a ratchet wrench.



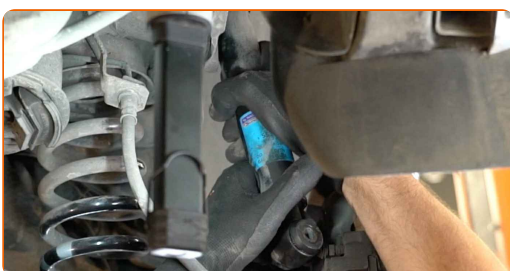
**20** Remove the fastening bolt.



**AUTODOC recommends:**

- Important! Hold the shock absorber while unscrewing the fastening bolts.  
MERCEDES-BENZ C-Class Coupe (CL203)

**21** Remove the shock absorber.



**AUTODOC recommends:**

- Replacement: shock absorbers – MERCEDES-BENZ C-Class Coupe (CL203). Carefully inspect the mount, the boot, and the bump stop of the shock absorber. Replace if necessary.

**22**

Clean the shock absorber mounting seats. Use a wire brush. Use WD-40 spray.

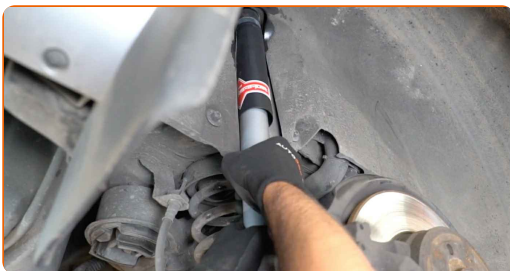


**Replacement: shock absorbers – MERCEDES-BENZ C-Class Coupe (CL203).  
Tip from AUTODOC:**

- Before installing a new shock absorber you should pump it manually 3-5 times.

**23**

Place the shock absorber in the wheel arch and secure it.



**AUTODOC recommends:**

- Important! Hold the shock absorber while screwing in the fastening bolts. MERCEDES-BENZ C-Class Coupe (CL203)

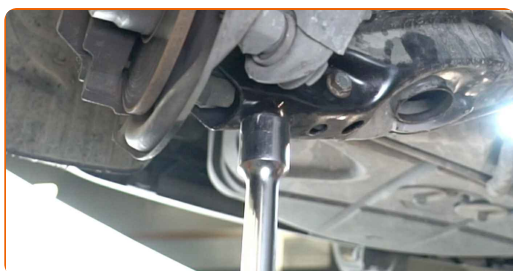
**24** Install the fastening bolt.



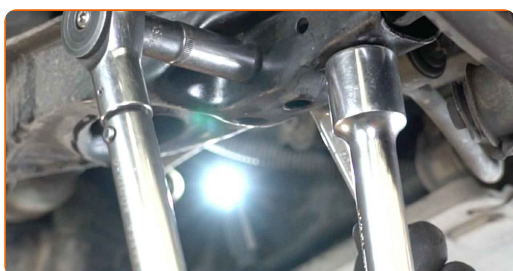
**25** Screw in the lower fastener of the shock absorber. Use a combination spanner #16. Use a drive socket #16. Use a ratchet wrench.



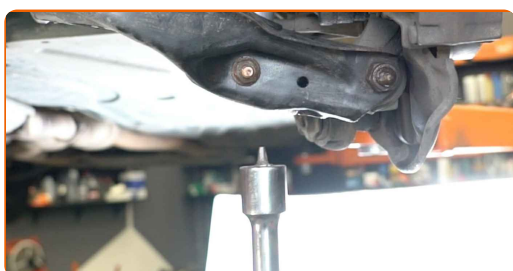
**26** Support the control arm. Use a hydraulic transmission jack.



**27** Tighten the lower fastener of the shock absorber. Use a combination spanner #16. Use a drive socket #16. Use a torque wrench. Tighten it to 55 Nm torque.



**28** Remove the support from under the control arm.



**AUTODOC recommends:**

- Replacement: shock absorbers – MERCEDES-BENZ C-Class Coupe (CL203). Lower the transmission jack smoothly, without jerks, to avoid damaging components and mechanisms.

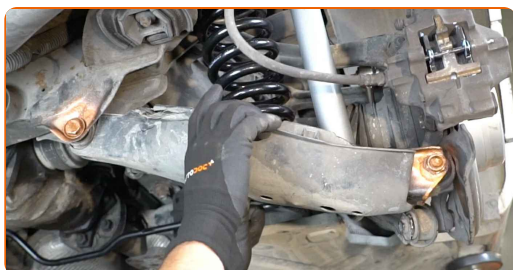
**29**

Treat the shock absorber fasteners. Use copper grease.



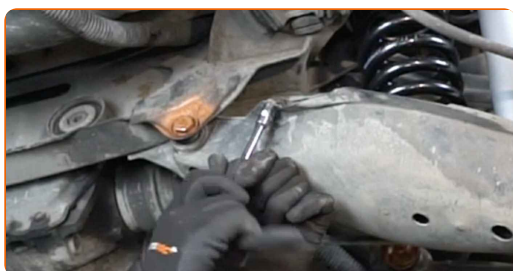
**30**

Install the control arm plastic cover.



**31**

Screw the fasteners of the control arm plastic cover. Use a drive socket #10. Use a ratchet wrench.



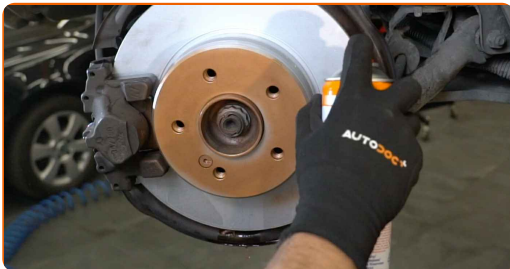
**32**

Treat the surface where the brake disc contacts the wheel rim. Use copper grease.



**33**

Clean the brake disk surface. Use a brake cleaner.



**AUTODOC recommends:**

- Replacement: shock absorbers – MERCEDES-BENZ C-Class Coupe (CL203). After applying the spray, wait a few minutes.

**34**

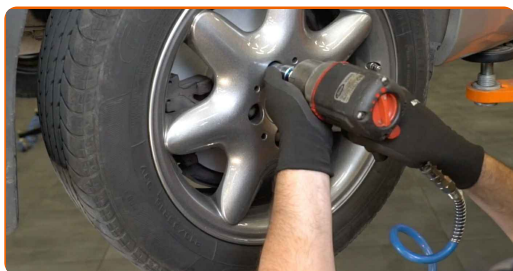
Install the wheel.



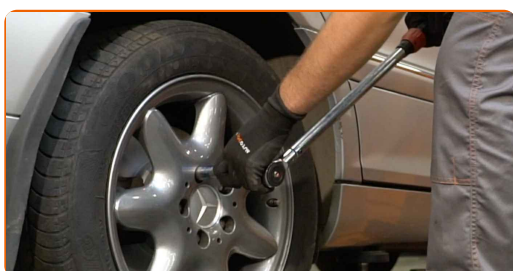
**AUTODOC recommends:**

- Warning! To avoid injury, hold the wheel while screwing in the fastening bolts on the car. MERCEDES-BENZ C-Class Coupe (CL203)

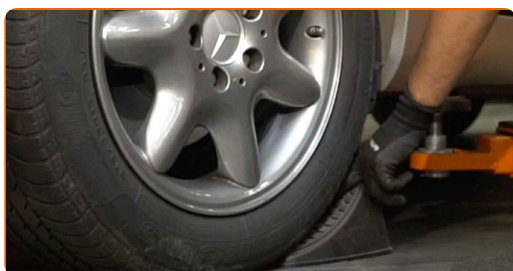
**35** Screw in the wheel bolts. Use wheel impact socket #17.



**36** Lower the car and working in a cross order, tighten the wheel bolts. Use wheel impact socket #17. Use a torque wrench. Tighten it to 110 Nm torque.



**37** Remove the jacks and chocks.



**38** Treat the shock absorber fasteners. Use copper grease.

**39** Tighten the top shock absorber fastening. Use a combination spanner #17. Use a shock absorber socket DDN#6. Use a torque wrench. Tighten it to 30 Nm torque.



40 Treat the shock absorber fasteners. Use copper grease.



41 Attach the side lining of the boot.



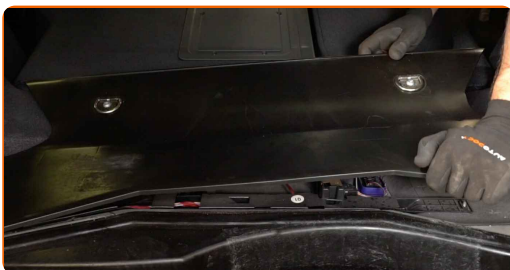
42 Install the clips of the boot side lining.



43 Install and secure the headlight rear cover.



44 Install the central protective plastic panel.



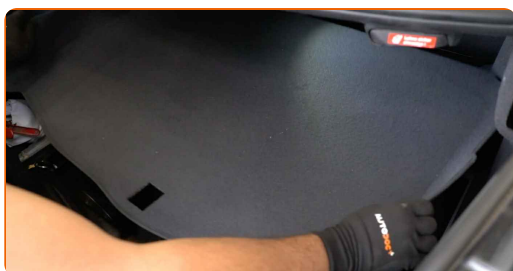
- 45 Screw in the fastener of the central protective plastic panel. Use Torx T40. Use a torque wrench. Tighten it to 11 Nm torque.



- 46 Return the seat to its original position.



- 47 Put down the lower lining of the boot.



- 48 Close the lid of the luggage compartment.

**WELL DONE!** 

**VIEW MORE TUTORIALS**



# AUTODOC – TOP QUALITY AND AFFORDABLE CAR PARTS ONLINE

**AUTODOC MOBILE APP: GREAT DEALS AND CONVENIENT SHOPPING**



**+ AUTODOC**

GET IT ON  
**Google Play**

 Download on the  
**App Store**

**Download**

**A GREAT SELECTION OF SPARE PARTS FOR YOUR CAR**

**SHOCK ABSORBERS: A WIDE SELECTION**

## **DISCLAIMER:**

The document contains only general recommendations that may be useful for you when you perform repair or replacement work. AUTODOC shall not be liable for any loss, injury, damage of property occurring in the repair or replacement process due to incorrect use or misinterpretation of the provided information.

AUTODOC shall not be liable for any possible mistakes and uncertainties in this guide. The information provided is for information purposes only and cannot replace advice from specialists.

AUTODOC shall not be liable for incorrect or hazardous usage of equipment, tools and car parts. AUTODOC strongly recommends to be careful and observe the safety rules when performing repair or replacement works. Remember: usage of low quality auto parts does not guarantee you the appropriate level of road safety.

© Copyright 2023 – All the contents of this website, in particular texts, photographs and graphics, are protected by copyright. All rights, including reproduction, publication, editing and translation rights, are reserved by AUTODOC SE.