



How to change front
window regulator on
MERCEDES-BENZ 190
(W201) – replacement
guide

SIMILAR VIDEO TUTORIAL



This video shows the replacement procedure of a similar car part on another vehicle

Important!

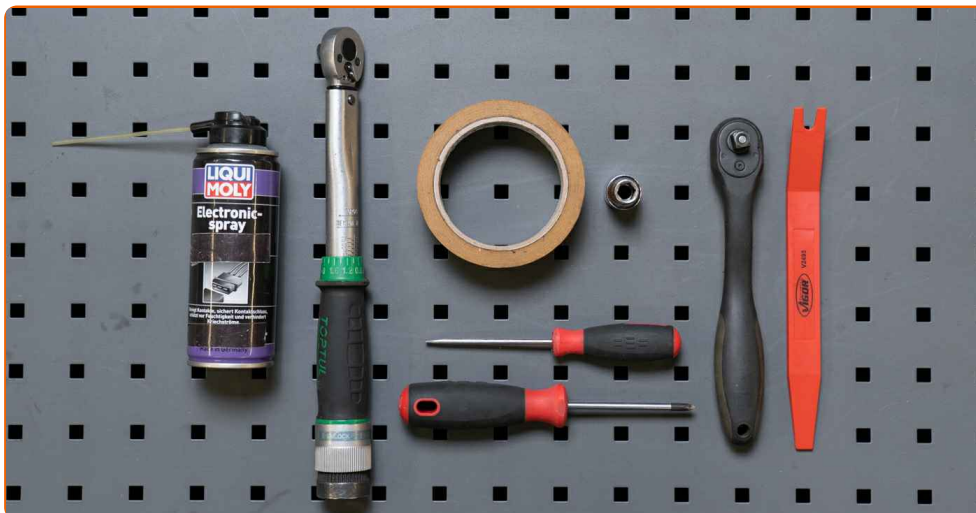
This replacement procedure can be used for:

MERCEDES-BENZ 190 (W201) E 1.8 (201.018), MERCEDES-BENZ 190 (W201) 2.0 (201.022), MERCEDES-BENZ 190 (W201) E 2.0 (201.024), MERCEDES-BENZ 190 (W201) 2.0 (201.023), MERCEDES-BENZ 190 (W201) E 2.0, MERCEDES-BENZ 190 (W201) E 2.3-16, MERCEDES-BENZ 190 (W201) E 2.3-16 (201.034), MERCEDES-BENZ 190 (W201) E 2.3, MERCEDES-BENZ 190 (W201) E 2.3 (201.028), MERCEDES-BENZ 190 (W201) E 2.5-16, MERCEDES-BENZ 190 (W201) E 2.6, MERCEDES-BENZ 190 (W201) D 2.0 (201.122), MERCEDES-BENZ 190 (W201) D 2.5 (201.126), MERCEDES-BENZ 190 (W201) Turbo-D 2.5 (201.128), MERCEDES-BENZ 190 (W201) E 2.6 (201.029), (+ 3)

The steps may slightly vary depending on the car design.

This tutorial was created based on the replacement procedure for a similar car part on: MERCEDES-BENZ E-Class Saloon (W124) E 250 D (124.126, 124.129)

REPLACEMENT: WINDOW REGULATOR – MERCEDES-BENZ 190 (W201). LIST OF THE TOOLS YOU'LL NEED:



- Dielectric grease
- Painter's tape
- Torque wrench
- Drive socket # 10
- Ratchet wrench
- Flat screwdriver
- Phillips screwdriver
- Plastic trim tool

Buy tools

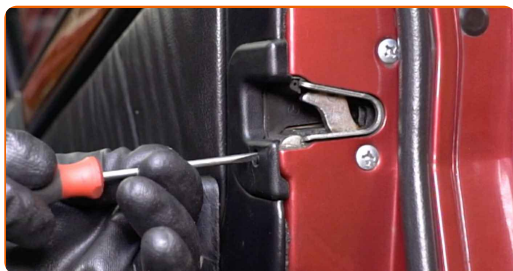
Replacement: window regulator – MERCEDES-BENZ 190 (W201). AUTODOC recommends:

- All work should be done with the engine stopped.

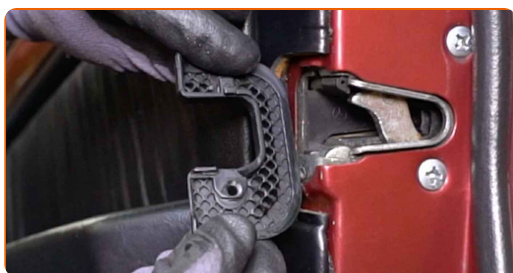
REPLACEMENT: WINDOW REGULATOR – MERCEDES-BENZ 190 (W201). USE THE FOLLOWING PROCEDURE:

1 Open the car door.

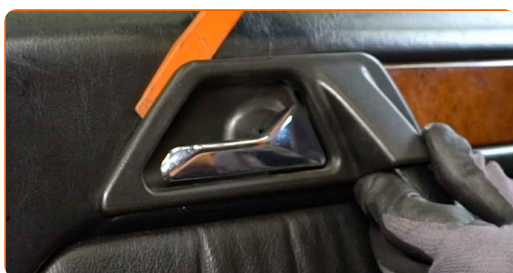
2 Unscrew the door lock cover fastener. Use a flat screwdriver.



3 Remove the door lock cover.



4 Detach the door handle trim panel. Use a plastic trim tool.



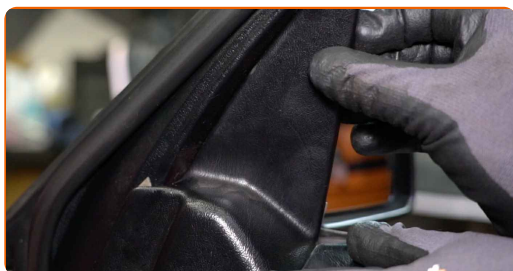
5

Unscrew the door card fastener. Use a drive socket #10. Use a ratchet wrench.



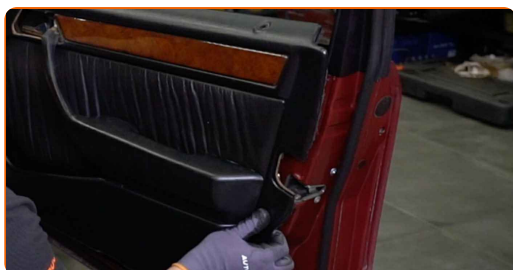
6

Remove the trim cover that hides the wing mirror fasteners.



7

Detach the door card.



8

Switch on the ignition.

9

Lower the window glass.



10

Switch off the ignition.

11 Unscrew the glass fastener. Use a drive socket #10. Use a ratchet wrench.



12 Raise the glass a little and release it from the window regulator.



Replacement: window regulator – MERCEDES-BENZ 190 (W201). Tip:

- When removing the glass, hold it firmly to avoid injury.

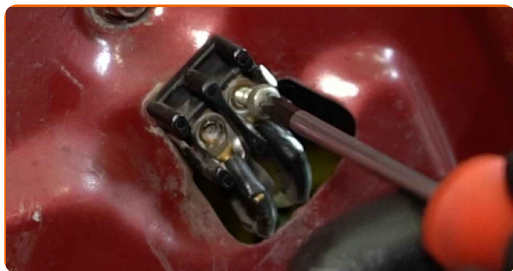
13 Lift the glass up fully and secure it. Use the masking tape.



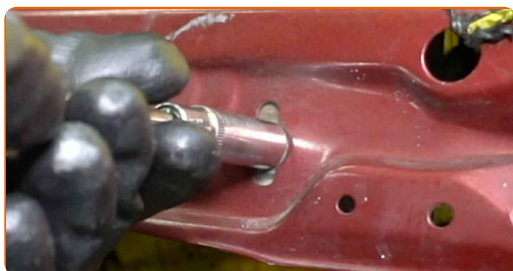
AUTODOC recommends:

- To avoid injury, hold the glass when raising it.

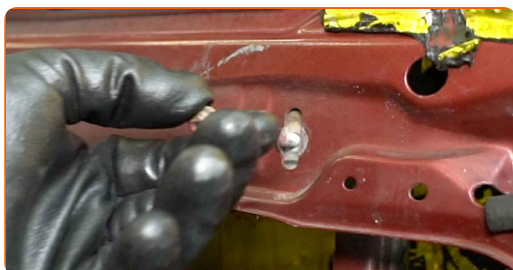
14 Unscrew the terminals of the window regulator mechanism. Use a Phillips screwdriver.



15 Unscrew the fasteners of the window regulator assembly. Use a drive socket #10. Use a ratchet wrench.



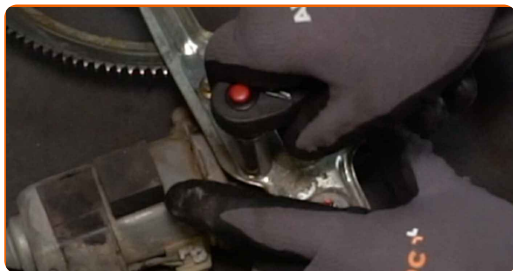
16 Remove the fastening bolts.



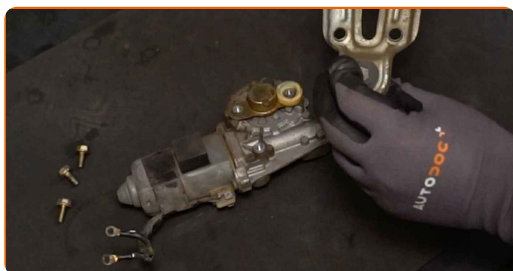
17 Remove the window regulator mechanism.



18 Unscrew the power window motor fasteners. Use a drive socket #10. Use a ratchet wrench.



19 Remove the power window motor.



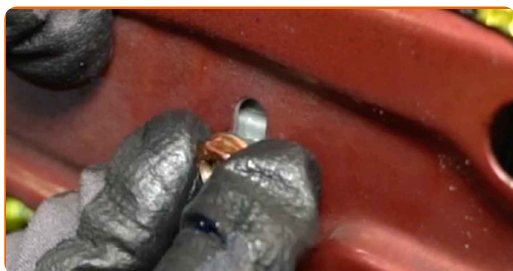
20 Install and screw in the motor fasteners on the new window regulator mechanism. Use a drive socket #10. Use a torque wrench. Tighten it to 8 Nm torque.



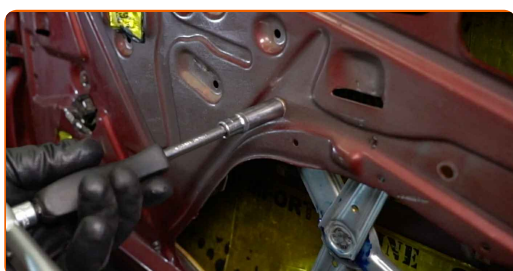
21 Install the new window regulator mechanism.



22 Install the fastening bolts.



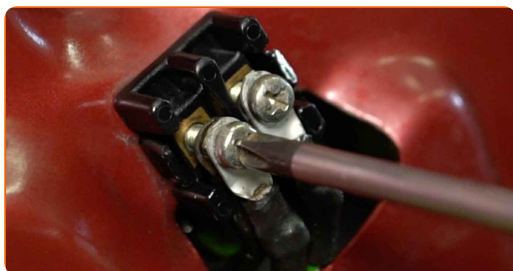
23 Tighten the fasteners of the window regulator assembly. Use a drive socket #10. Use a torque wrench. Tighten it to 8 Nm torque.



24 Treat the terminals of the window regulator mechanism. Use dielectric grease.



25 Screw in the terminals of the window regulator mechanism. Use a Phillips screwdriver.



26

Remove the painter's tape.



27

Lower the window glass and install it to its mounting seat in the window raiser mechanism.

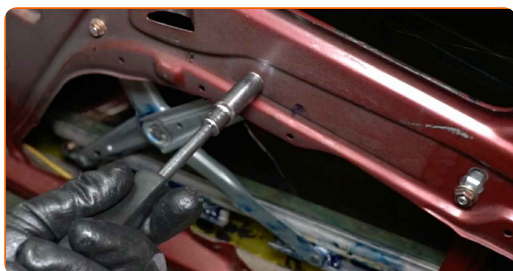


Replacement: window regulator – MERCEDES-BENZ 190 (W201). AUTODOC experts recommend:

- To avoid injury, hold the glass when lowering it.

28

Tighten the glass fastener. Use a drive socket #10. Use a torque wrench. Tighten it to 6 Nm torque.

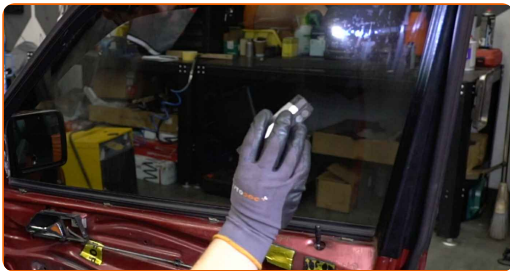


Replacement: window regulator – MERCEDES-BENZ 190 (W201).
Professionals recommend:

- Do not overtighten the glass fastener to avoid damaging the glass.

29 Switch on the ignition.

30 Check that the window regulator works correctly.

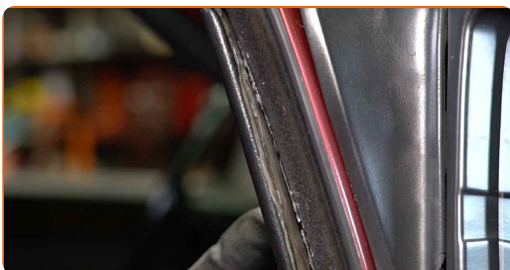


31 Switch off the ignition.

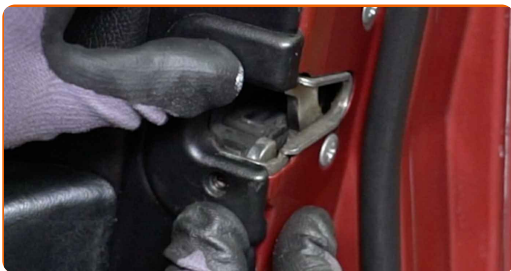
32 Reinstall the door card.



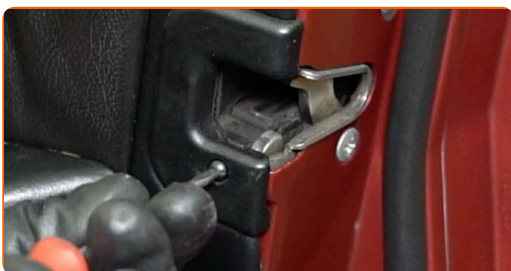
33 Install the wing mirror trim cover.



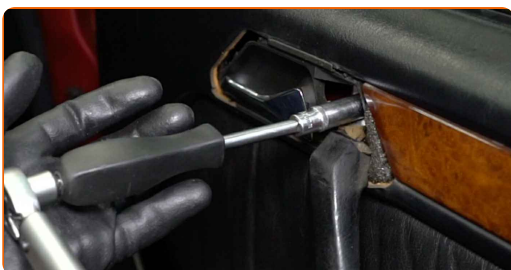
34 Reinstall the door lock cover.



35 Screw in the door lock cover fastener. Use a flat screwdriver.



36 Tighten the door card fastener. Use a drive socket #10. Use a torque wrench. Tighten it to 8 Nm torque.

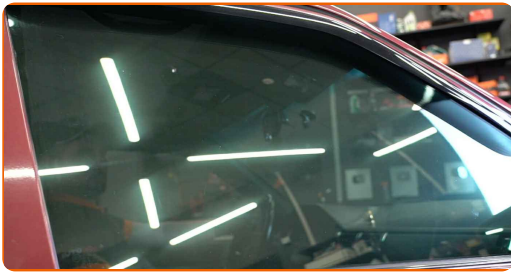


37 Attach the door handle trim panel.



38

Close the car door.



WELL DONE! 

VIEW MORE TUTORIALS

AUTODOC – TOP QUALITY AND AFFORDABLE CAR PARTS ONLINE

AUTODOC MOBILE APP: GREAT DEALS AND CONVENIENT SHOPPING



+ AUTODOC

GET IT ON
Google Play

Download on the
App Store

Download

A GREAT SELECTION OF SPARE PARTS FOR YOUR CAR

WINDOW REGULATOR: A WIDE SELECTION

DISCLAIMER:

The document contains only general recommendations that may be useful for you when you perform repair or replacement work. AUTODOC shall not be liable for any loss, injury, damage of property occurring in the repair or replacement process due to incorrect use or misinterpretation of the provided information.

AUTODOC shall not be liable for any possible mistakes and uncertainties in this guide. The information provided is for information purposes only and cannot replace advice from specialists.

AUTODOC shall not be liable for incorrect or hazardous usage of equipment, tools and car parts. AUTODOC strongly recommends to be careful and observe the safety rules when performing repair or replacement works. Remember: usage of low quality auto parts does not guarantee you the appropriate level of road safety.

© Copyright 2023 – All the contents of this website, in particular texts, photographs and graphics, are protected by copyright. All rights, including reproduction, publication, editing and translation rights, are reserved by AUTODOC SE.