



How to change rear
wheel bearing on **VW**
Lupo 6X1 – replacement
guide

VIDEO TUTORIAL

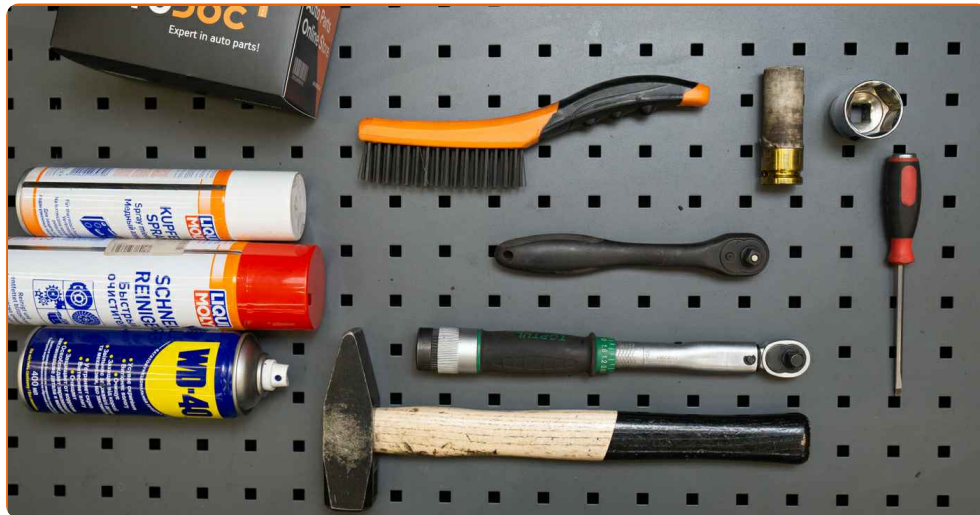
** Important!**

This replacement procedure can be used for:

VW Polo Hatchback (6N1) 1.6, VW Polo Hatchback (6N1) 1.9 D, VW Polo Hatchback (6N1) 1.4, VW Polo Hatchback (6N1) 1.4 16V, VW Polo Classic (6V2) 1.6, VW Polo Classic (6V2) 1.4, VW Polo Hatchback (6N1) 1.0, VW Polo Classic (6V2) 1.9 TDI, VW Polo Hatchback (6N1) 1.7 SDI, VW Polo Classic (6V2) 1.8, VW Polo Variant (6V5) 1.8, VW Lupo (6X1, 6E1) 1.0, VW Lupo (6X1, 6E1) 1.4 16V, VW Lupo (6X1, 6E1) 1.7 SDI, VW Polo Variant (6V5) 1.4, (+ 21)

The steps may slightly vary depending on the car design.

REPLACEMENT: WHEEL BEARING – VW LUPO 6X1.
TOOLS YOU'LL NEED:



- Wire brush
- WD-40 spray
- Copper grease
- Drive socket # 30
- Wheel impact socket #17
- Ratchet wrench
- Torque wrench
- Flat chisel
- Hammer
- Rubber mallet
- Phillips screwdriver
- Wheel chock

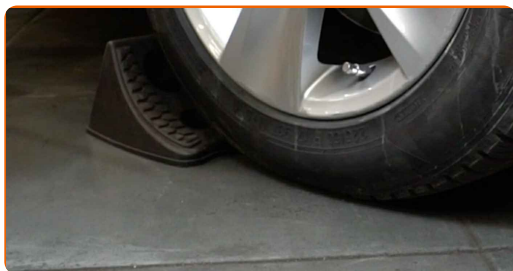
BUY TOOLS

Replacement: wheel bearing – VW Lupo 6X1. AUTODOC recommends:

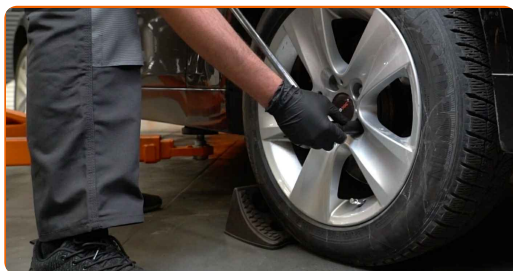
- Do not re-use the bearing assembly of your VW Lupo 6X1 car.
- The wheel hub bearing replacement procedure is identical for both wheels on the same axle.
- Warning! Shut down the engine before starting any work – VW Lupo 6X1.

CARRY OUT REPLACEMENT IN THE FOLLOWING ORDER:

1 Secure the wheels with chocks.



2 Loosen the wheel mounting bolts. Use wheel impact socket #17.



3 Raise the rear of the car and secure on supports.



4

Unscrew the wheel bolts.



Replacement: wheel bearing – VW Lupo 6X1. Professionals recommend:

- To avoid injury, hold up the wheel when unscrewing the bolts.

5

Remove the wheel.



6

Clean the brake drum fasteners. Use a wire brush. Use WD-40 spray.



7 Unscrew the brake drum fastening. Use a Phillips screwdriver.



8 Remove the brake drum.



Replacement: wheel bearing – VW Lupo 6X1. AUTODOC experts recommend:

- Examine the brake drum. Replace it if necessary.

9 Remove the hub bearing protection cap. Use a flat metal-working chisel. Use a hammer.



10 Clean the fastener of the driveshaft. Use a wire brush. Use WD-40 spray.

11 Unscrew the wheel hub axle nut. Use a drive socket #30. Use a ratchet wrench.



12 Remove the hub and the bearing together, since they are a sealed unit.



13 Clean the hub bearing mounting seat.

14 Apply special grease to the bearing assembly mounting seat. Use copper grease.

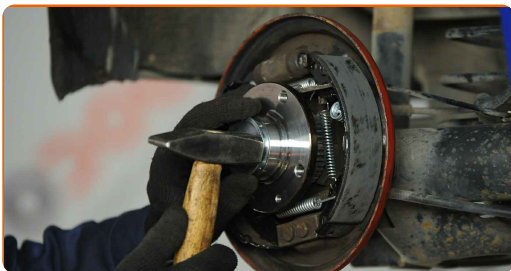
15 Install the new wheel hub with a bearing.



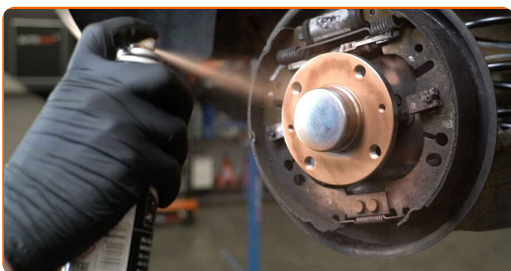
16 Tighten the hub. Use a drive socket #30. Use a torque wrench. Tighten it to 175 Nm torque.



17 Install the hub bearing protection cap. Use a rubber mallet.



18 Clean the hub. Use a wire brush. Treat the contacting surface. Use copper grease.



19 Install a brake drum.



20 Tighten the brake drum fasteners. Use a Phillips screwdriver. Use a torque wrench. Tighten it to 4 Nm torque.



21 Clean the wheel rim mounting seat. Use a wire brush.

22

Treat the surface where the wheel rim contacts the brake drum. Use copper grease.



23

Install the wheel.



AUTODOC recommends:

- Important! Hold the wheel while screwing in the fastening bolts. VW Lupo 6X1

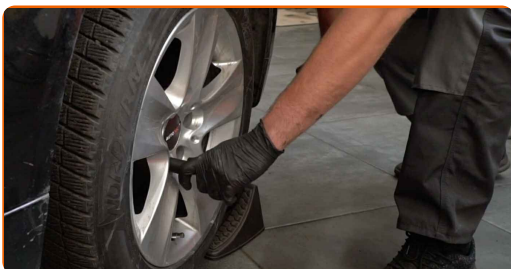
24

Screw in the wheel bolts. Use wheel impact socket #17.

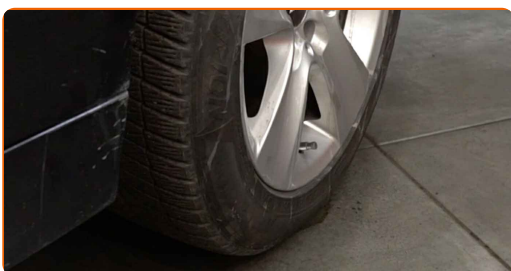


25

Lower the car and working in a cross order, tighten the wheel bolts. Use wheel impact socket #17. Use a torque wrench. Tighten it to 110 nm torque.

**26**

Remove the jacks and chocks.



WELL DONE! 

VIEW MORE TUTORIALS

AUTODOC – TOP QUALITY AND AFFORDABLE CAR PARTS ONLINE

AUTODOC MOBILE APP: GREAT DEALS AND CONVENIENT SHOPPING



+ AUTODOC

GET IT ON
Google Play

Download on the
App Store

Download

A GREAT SELECTION OF SPARE PARTS FOR YOUR CAR

BUY SPARE PARTS FOR VW

WHEEL BEARING: A WIDE SELECTION

CHOOSE CAR PARTS FOR VW LUPO 6X1

WHEEL BEARING FOR VW: BUY NOW

WHEEL BEARING FOR VW LUPO 6X1: THE BEST DEALS & OFFERS

DISCLAIMER:

The document contains only general recommendations that may be useful for you when you perform repair or replacement work. AutoDoc shall not be liable for any loss, injury, damage of property occurring in the repair or replacement process due to incorrect use or misinterpretation of the provided information.

AutoDoc shall not be liable for any possible mistakes and uncertainties in this guide. The information provided is for information purposes only and cannot replace advice from specialists.

AutoDoc shall not be liable for incorrect or hazardous usage of equipment, tools and car parts. AutoDoc strongly recommends to be careful and observe the safety rules when performing repair or replacement works. Remember: usage of low quality auto parts does not guarantee you the appropriate level of road safety.

© Copyright 2022 – All the contents of this website, in particular texts, photographs and graphics, are protected by copyright. All rights, including reproduction, publication, editing and translation rights, are reserved by Autodoc GmbH.