



How to change rear
shock absorbers on **VW**
Lupo 6X1 – replacement
guide

VIDEO TUTORIAL



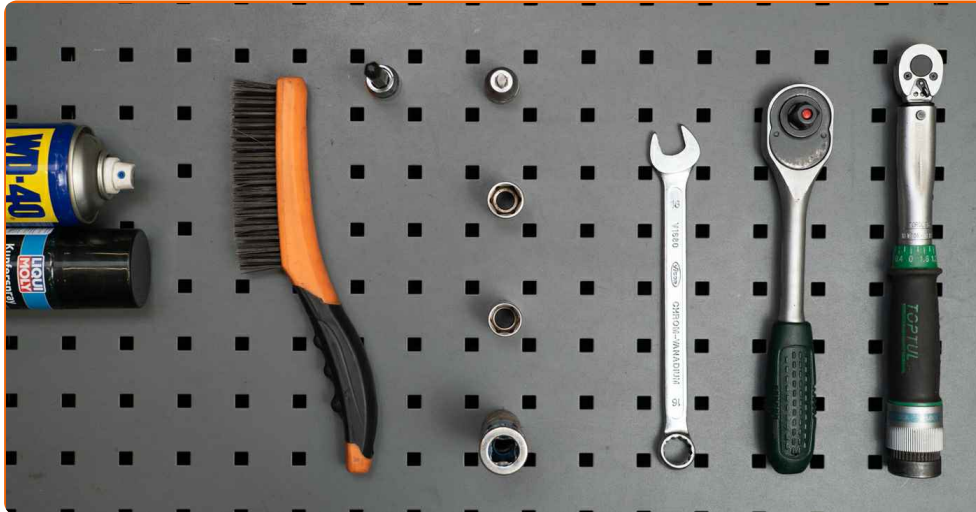
Important!

This replacement procedure can be used for:

VW Lupo / Lupo 3L (6X1, 6E1) 1.0, VW Lupo / Lupo 3L (6X1, 6E1) 1.4 16V, VW Lupo / Lupo 3L (6X1, 6E1) 1.7 SDI, VW Lupo / Lupo 3L (6X1, 6E1) 1.2 TDI 3L, VW Lupo / Lupo 3L (6X1, 6E1) 1.4 TDI, VW Lupo / Lupo 3L (6X1, 6E1) 1.6 GTI, VW Lupo / Lupo 3L (6X1, 6E1) 1.4 FSI, VW Lupo / Lupo 3L (6X1, 6E1) 1.4

The steps may slightly vary depending on the car design.

REPLACEMENT: SHOCK ABSORBERS – VW LUPO 6X1.
LIST OF THE TOOLS YOU'LL NEED:



- Wire brush
- WD-40 spray
- Copper grease
- Torque wrench
- Combination spanner #16
- Drive socket # 16
- Drive socket # 17
- Torx bit T25
- Shock absorber socket #DD6
- Wheel impact socket #17
- Ratchet wrench
- Hydraulic transmission jack
- Wheel chock

BUY TOOLS

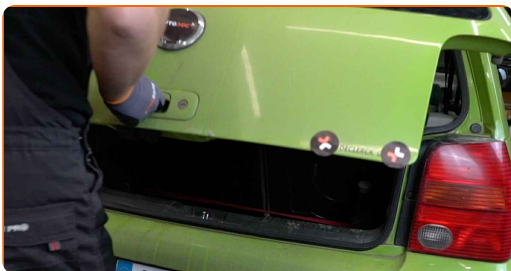
Replacement: shock absorbers – VW Lupo 6X1. AUTODOC experts recommend:

- Both shock absorbers of the rear suspension should be replaced simultaneously.
- The replacement procedure is identical for the left and right shock absorbers of the rear suspension.
- Please note: all work on the car – VW Lupo 6X1 – should be done with the engine switched off.

CARRY OUT REPLACEMENT IN THE FOLLOWING ORDER:

1

Open the boot lid.



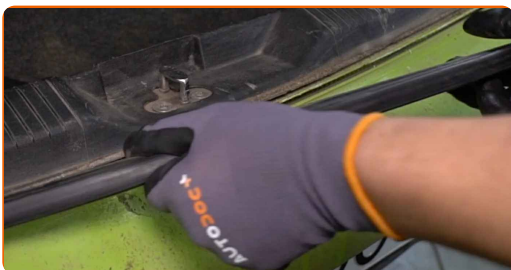
2

Detach the parcel shelf.

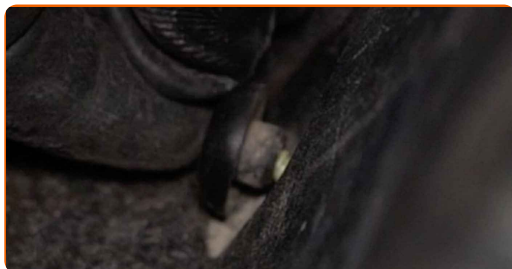


3

Remove the rubber strip.



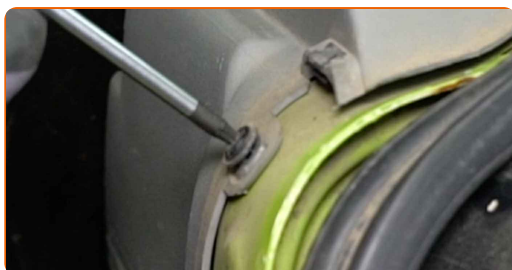
4 Unscrew the fasteners of the boot sill panel.



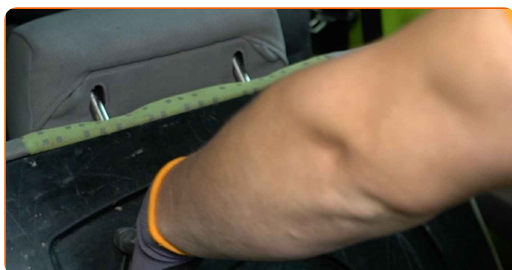
5 Detach the boot sill panel.



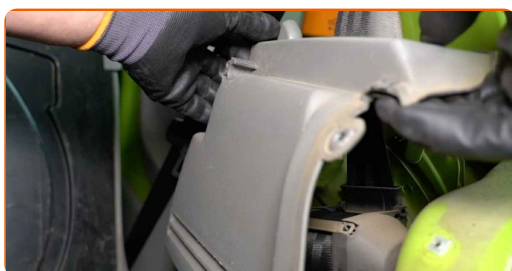
6 Unscrew the fasteners of the boot side panel. Use Torx T25.



7 Fold down the backrests of the rear seats.



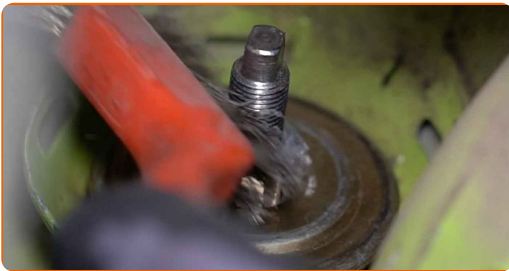
8 Detach the boot side lining.



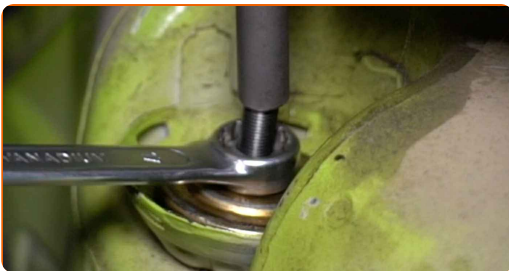
9 Remove the protective cap of the shock absorber mount.



10 Clean the shock absorber fasteners. Use a wire brush. Use WD-40 spray.



11 Loosen the upper fastener of the shock absorber. Use a drive socket #17. Use a shock absorber socket DDN⁰⁶. Use a ratchet wrench.



Replacement: shock absorbers – VW Lupo 6X1. Professionals recommend:

- Do not completely unscrew the upper fasteners as they may hold also other suspension components.

12 Secure the wheels with chocks.

13 Loosen the wheel mounting bolts. Use wheel impact socket #17.



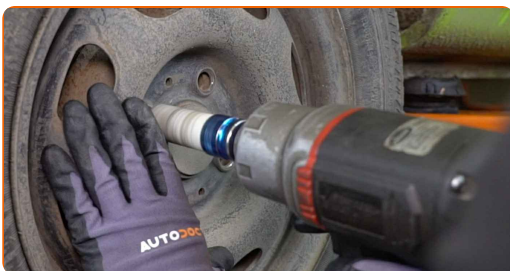
14 Raise the car.



Replacement: shock absorbers – VW Lupo 6X1. AUTODOC recommends:

- If you are using a jack, make sure it rests on a flat surface without any unevenness.
- Be sure to additionally secure the car with jack stands.

15 Unscrew the wheel bolts.



AUTODOC recommends:

- Warning! To avoid injury, hold the wheel while unscrewing the fastening bolts. VW Lupo 6X1

16

Remove the wheel.



17

Support the rear suspension beam. Use a hydraulic transmission jack.



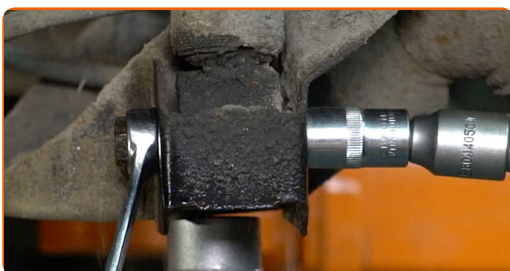
18

Clean the shock absorber fasteners. Use a wire brush. Use WD-40 spray.



19

Unscrew the lower fastener of the shock absorber. Use a combination spanner #16. Use a drive socket #16. Use a ratchet wrench.



AUTODOC recommends:

- Important! Hold the shock absorber while unscrewing the fastening bolts. VW Lupo 6X1

20

Unscrew the upper fastener of the shock absorber.

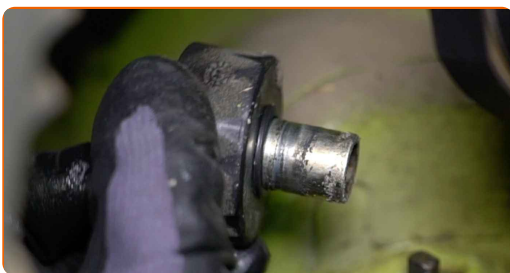


AUTODOC recommends:

- VW Lupo 6X1 – To avoid injury, hold the shock absorber while unscrewing the fastening bolts.

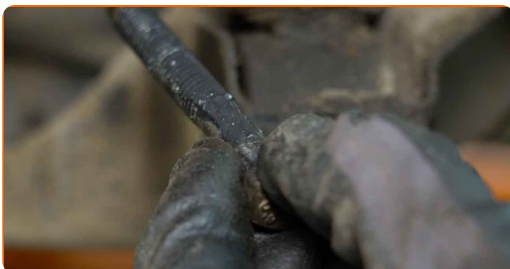
21

Remove the shock absorber upper mount.



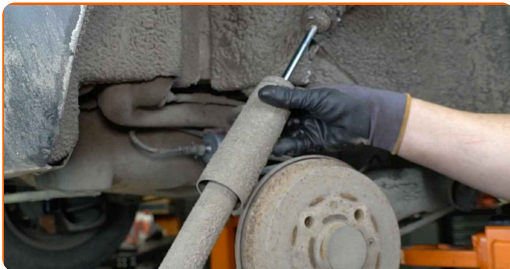
22

Remove the fastening bolt.



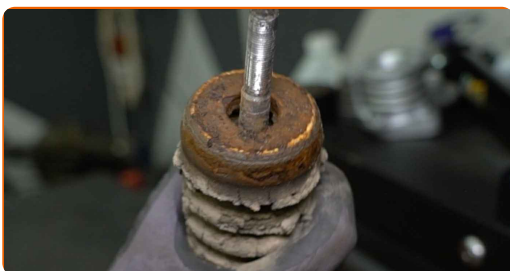
23

Remove the shock absorber.



24

Remove the shock absorber dust cap and the bump stop.

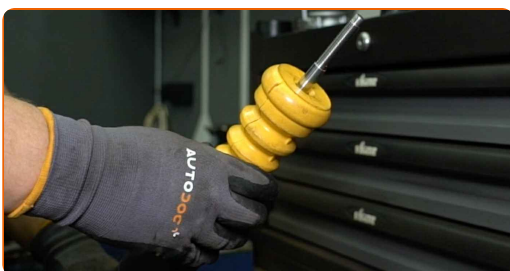


AUTODOC recommends:

- Replacement: shock absorbers – VW Lupo 6X1. Carefully inspect the mount, the boot, and the bump stop of the shock absorber. Replace if necessary.
- Before installing a new shock absorber you should pump it manually 3-5 times.

25

Install the dust sleeve and the bump stop on the new shock absorber.



26 Clean the shock absorber mounting seats. Use a wire brush. Use WD-40 spray.



27 Place the shock absorber in the wheel arch and fasten it.



28 Install the fastening bolt.

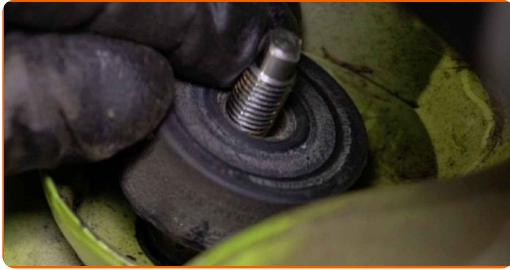


29 Screw in the lower fastener of the shock absorber. Use a combination spanner #16. Use a drive socket #16. Use a ratchet wrench.

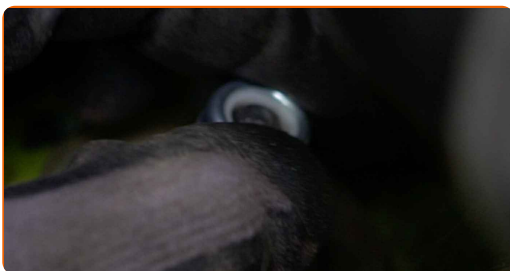
AUTODOC recommends:

- VW Lupo 6X1 – To avoid injury, hold the shock absorber while screwing in the fastening bolts.

30 Install the shock absorber upper mount.



31 Screw the upper fastener of the shock absorber. Use a drive socket #16. Use a shock absorber socket DDN⁰⁶ Use a ratchet wrench.



AUTODOC recommends:

- Important! Hold the shock absorber while screwing in the fastening bolts. VW Lupo 6X1

32 Tighten the lower fastener of the shock absorber. Use a combination spanner #16. Use a drive socket #16. Use a torque wrench. Tighten it to 90 Nm torque. +90°



Replacement: shock absorbers – VW Lupo 6X1. Tip from AUTODOC experts:

- To tighten the fasteners correctly, you have to jack up the suspension components to their working position.

33 Treat the shock absorber fasteners. Use copper grease.



34 Remove the support from under the rear axle beam.



AUTODOC recommends:

- Replacement: shock absorbers – VW Lupo 6X1. Lower the transmission jack smoothly, without jerks, to avoid damaging components and mechanisms.

35 Treat the shock absorber fasteners. Use copper grease.

36 Treat the surface where the wheel rim contacts the brake drum. Use copper grease.



37 Install the wheel.



AUTODOC recommends:

- Important! Hold the wheel while screwing in the fastening bolts. VW Lupo 6X1

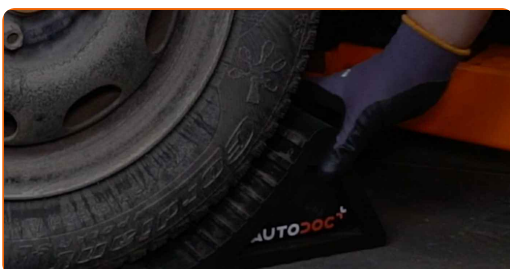
38 Screw in the wheel bolts. Use wheel impact socket #17.



39 Lower the car and working in a cross order, tighten the wheel bolts. Use wheel impact socket #17. Use a torque wrench. Tighten it to 110 Nm torque.



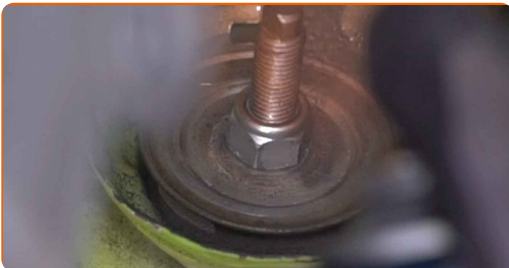
40 Remove the jacks and chocks.



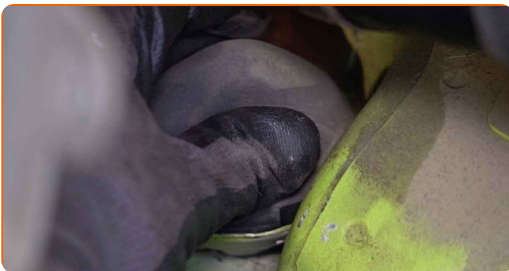
- 41** Tighten the top shock absorber fastening. Use a drive socket #17. Use a shock absorber socket DDN#6 Use a torque wrench. Tighten it to 20 Nm torque.



- 42** Treat the shock absorber mounting seats. Use copper grease.



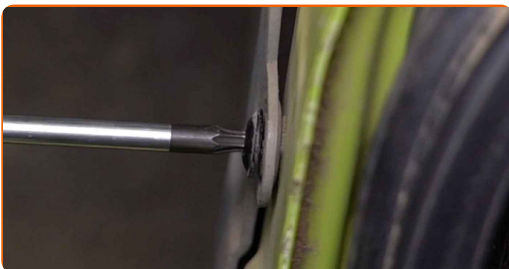
- 43** Install the protective cap of the shock absorber mount.



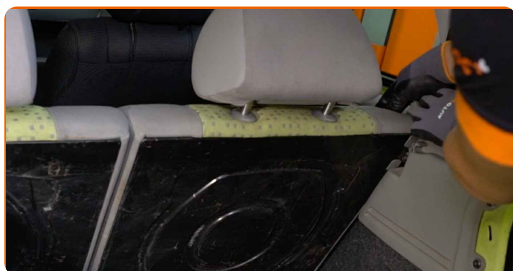
- 44** Attach the side lining of the boot.



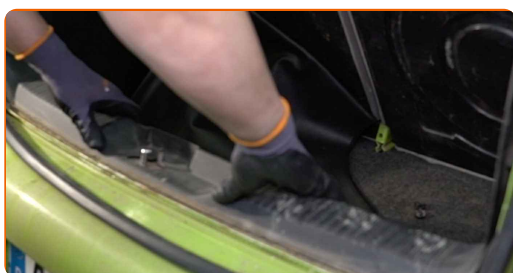
- 45** Screw in the fasteners of the boot side panel. Use Torx T25.



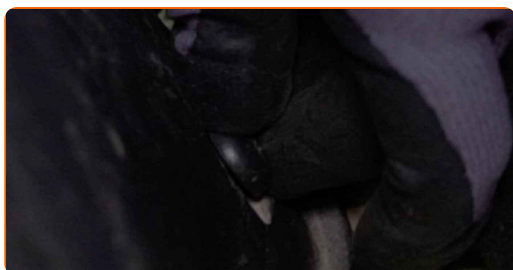
46 Return the seat to its original position.



47 Attach the boot sill panel.



48 Screw in the fasteners of the boot sill panel.



49 Install the rubber strip.



50 Reinstall the parcel shelf.



51

Close the lid of the luggage compartment.

**WELL DONE!** 👍[VIEW MORE TUTORIALS](#)

AUTODOC – TOP QUALITY AND AFFORDABLE CAR PARTS ONLINE

AUTODOC MOBILE APP: GREAT DEALS AND CONVENIENT SHOPPING



AUTODOC

GET IT ON
 **Google Play**

Download on the
 **App Store**

Download

A GREAT SELECTION OF SPARE PARTS FOR YOUR CAR

BUY SPARE PARTS FOR VW

SHOCK ABSORBERS: A WIDE SELECTION

CHOOSE CAR PARTS FOR VW LUPO 6X1

SHOCK ABSORBERS FOR VW: BUY NOW

SHOCK ABSORBERS FOR VW LUPO 6X1: THE BEST DEALS & OFFERS

DISCLAIMER:

The document contains only general recommendations that may be useful for you when you perform repair or replacement work. AUTODOC shall not be liable for any loss, injury, damage of property occurring in the repair or replacement process due to incorrect use or misinterpretation of the provided information.

AUTODOC shall not be liable for any possible mistakes and uncertainties in this guide. The information provided is for information purposes only and cannot replace advice from specialists.

AUTODOC shall not be liable for incorrect or hazardous usage of equipment, tools and car parts. AUTODOC strongly recommends to be careful and observe the safety rules when performing repair or replacement works. Remember: usage of low quality auto parts does not guarantee you the appropriate level of road safety.

© Copyright 2022 – All the contents of this website, in particular texts, photographs and graphics, are protected by copyright. All rights, including reproduction, publication, editing and translation rights, are reserved by AUTODOC GmbH.