



How to change front
window regulator on **VW**
Lupo 6X1 – replacement
guide

VIDEO TUTORIAL

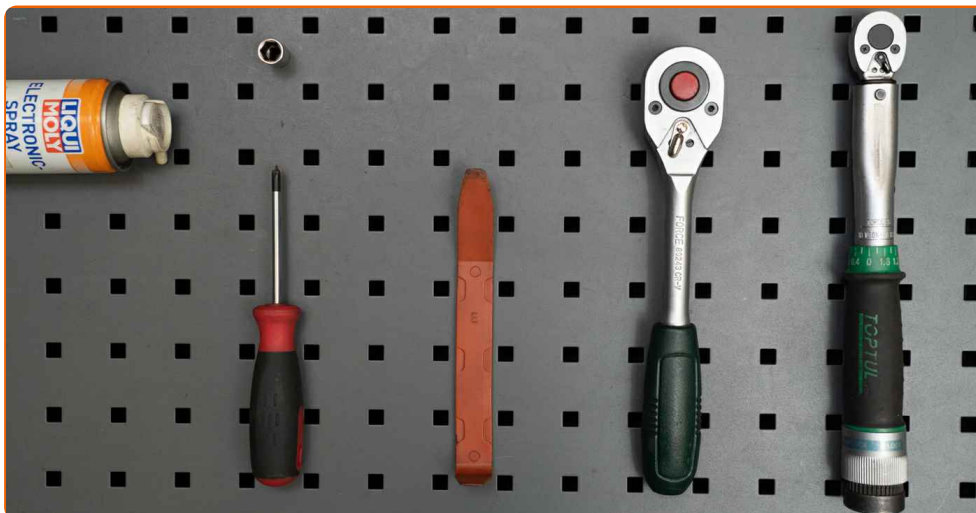
** Important!**

This replacement procedure can be used for:

VW Lupo (6X1, 6E1) 1.0, VW Lupo (6X1, 6E1) 1.4 16V, VW Lupo (6X1, 6E1) 1.7 SDI,
VW Lupo (6X1, 6E1) 1.4 TDI, VW Lupo (6X1, 6E1) 1.4 FSI, VW Lupo (6X1, 6E1) 1.4

The steps may slightly vary depending on the car design.

REPLACEMENT: WINDOW REGULATOR – VW LUPO 6X1.
LIST OF THE TOOLS YOU'LL NEED:



- Electronic spray
- Torque wrench
- Drive socket # 10
- Ratchet wrench
- Phillips Screwdriver
- Plastic trim tool

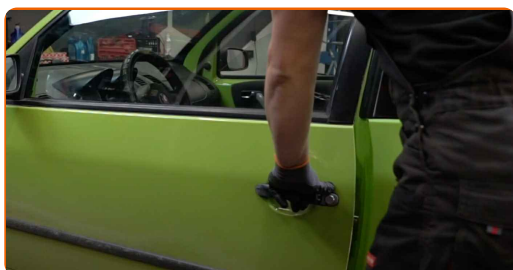
BUY TOOLS

Replacement: window regulator – VW Lupo 6X1. AUTODOC experts recommend:

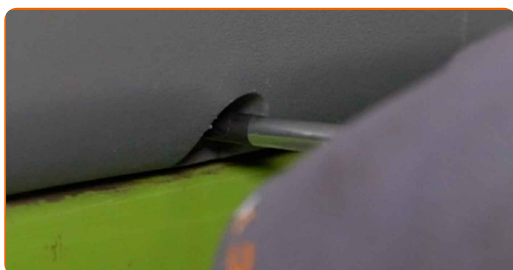
- All work should be done with the engine stopped.

REPLACEMENT: WINDOW REGULATOR – VW LUPO 6X1. USE THE FOLLOWING PROCEDURE:

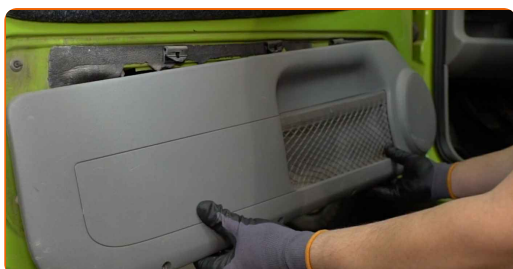
1 Open the car door.



2 Unscrew the fasteners of the lower door card. Use a Phillips screwdriver.



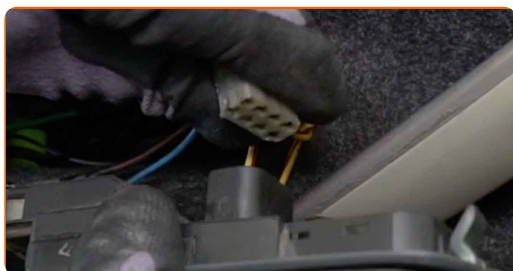
3 Detach the lower door card.



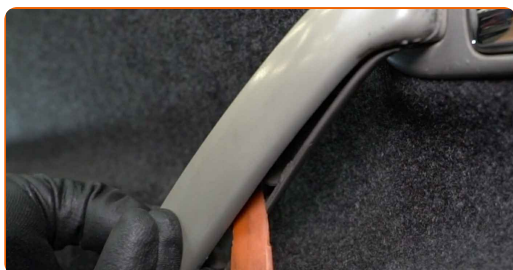
4 Remove the power window switch module. Use a plastic trim tool.



5 Detach the power window connectors from the control unit.



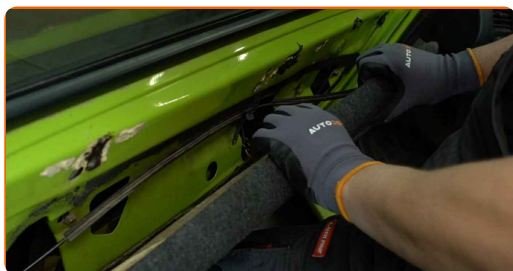
6 Detach the door handle trim panel. Use a plastic trim tool.



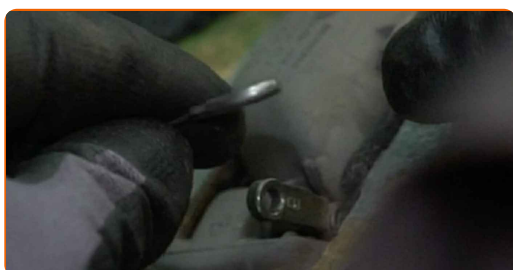
7 Unscrew the door handle fastener. Use a Phillips screwdriver.



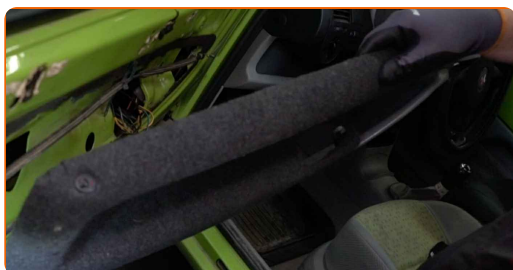
8 Detach the door card.



9 Remove the handle-to-lock cable.



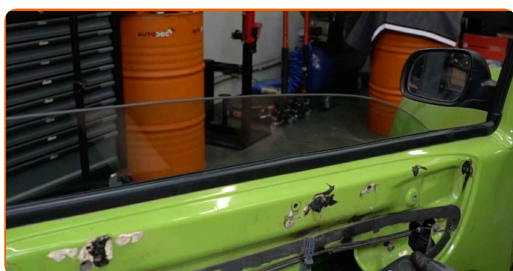
10 Remove the door card.



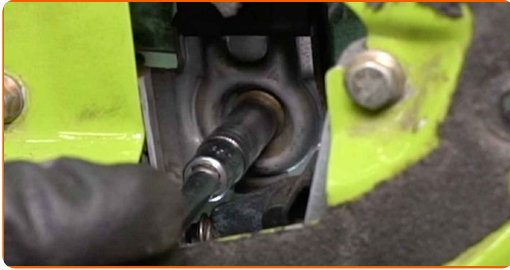
11 Attach the power window connectors to the control unit.



12 Lower the glass so that you can see the fasteners that connect it to the window regulator mechanism.



13 Unscrew the window glass fasteners. Use a drive socket #10. Use a ratchet wrench.



14 Disconnect the glass from the window regulator mechanism.

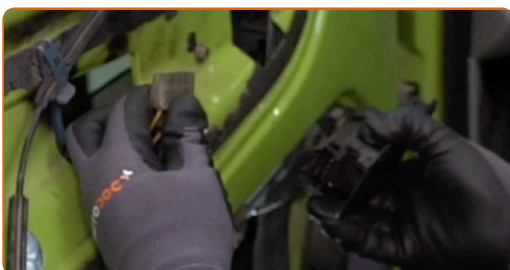
15 Lift the glass up fully and secure it.



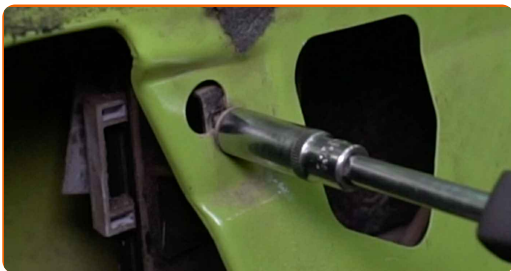
Replacement: window regulator – VW Lupo 6X1. AUTODOC experts recommend:

- To avoid injury, hold the glass when raising it.

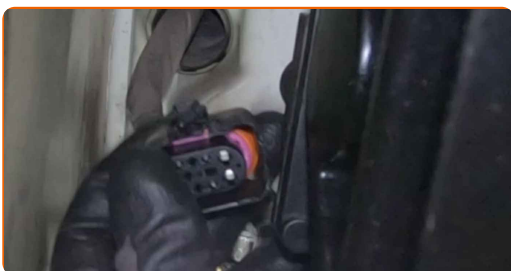
16 Detach the power window connectors from the control unit.



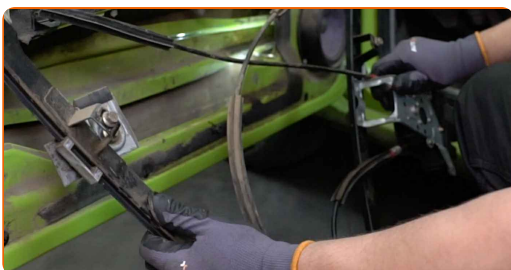
17 Unscrew the fasteners of the window regulator assembly. Use a drive socket #10. Use a ratchet wrench.



18 Detach the connector from the power window motor.



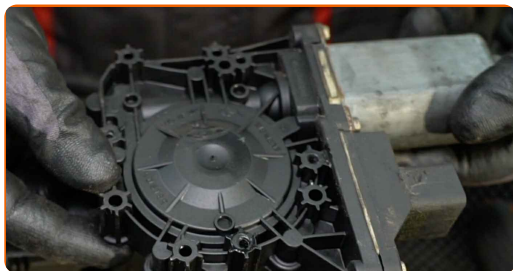
19 Remove the window regulator mechanism.



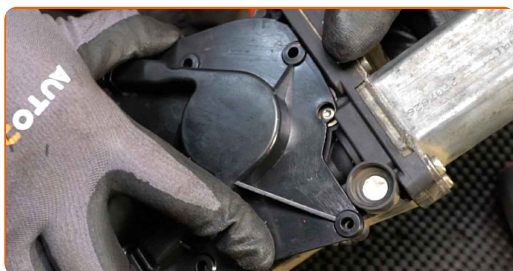
20 Unscrew the power window motor fasteners. Use a Phillips screwdriver.



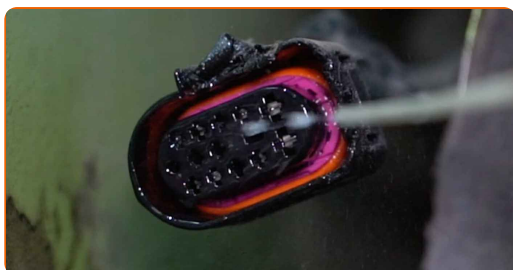
21 Remove the power window motor.



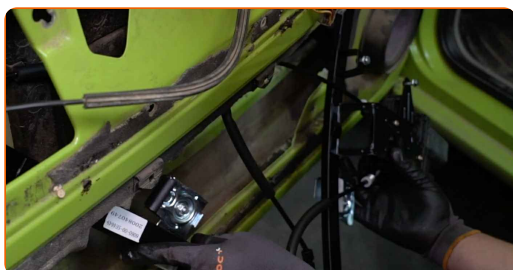
22 Install and screw in the motor fasteners on the new window regulator mechanism. Use a Phillips screwdriver.



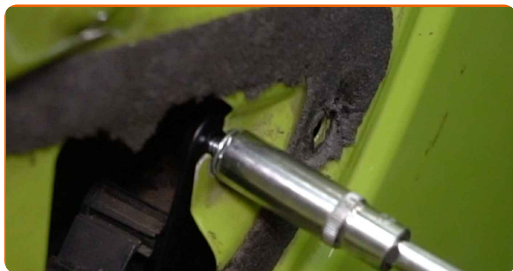
23 Treat the power window motor connector. Use dielectric grease.



24 Install the new window regulator mechanism.



25 Screw in the fasteners of the window regulator mechanism. Use a drive socket #10. Use a ratchet wrench.

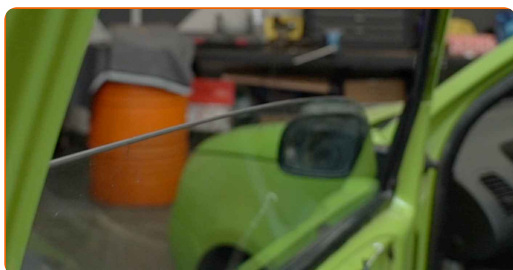


26 Attach the connector to the power window motor.

27 Attach the power window connectors to the control unit.



28 Lower the window glass and install it to its mounting seat in the window raiser mechanism.



Replacement: window regulator – VW Lupo 6X1. Tip from AUTODOC experts:

- To avoid injury, hold the glass when lowering it.
- When installing, do not use excessive force to avoid damage to the part.

29

Screw in the window glass fasteners. Use a drive socket #10. Use a ratchet wrench.



Replacement: window regulator – VW Lupo 6X1. Tip:

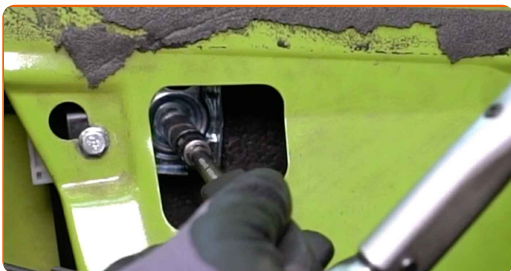
- To avoid injury, hold the glass when screwing in the fasteners.

30

Check that the window regulator works correctly.

31

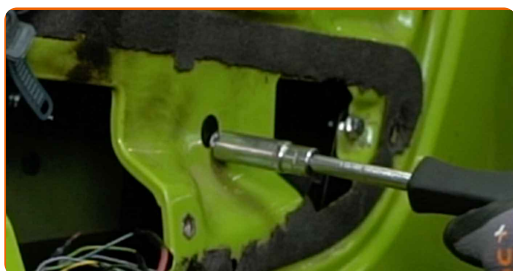
Tighten the window glass fasteners. Use a drive socket #10. Use a torque wrench. Tighten it to 5 Nm torque.



Replacement: window regulator – VW Lupo 6X1. AUTODOC recommends:

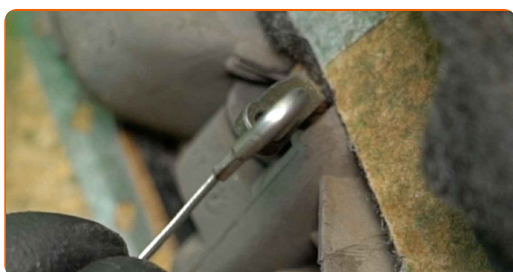
- Do not apply too much force when tightening the fasteners. Overtightening may damage the glass.

- 32 Tighten the fasteners of the window regulator assembly. Use a drive socket #10. Use a torque wrench. Tighten it to 8 Nm torque.



- 33 Detach the power window connectors from the control unit.

- 34 Install the handle-to-lock cable.



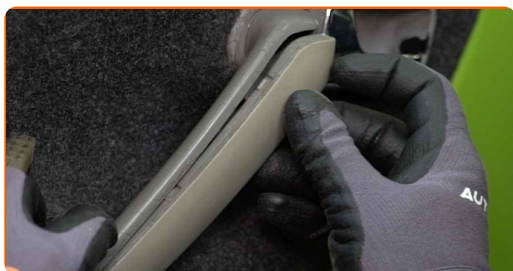
- 35 Reinstall the door card.



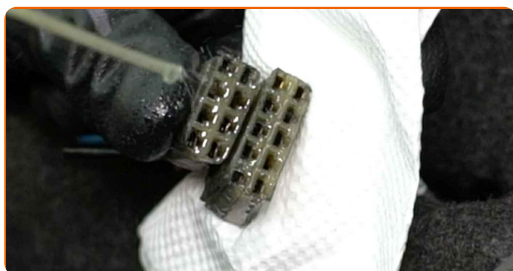
- 36 Tighten the door handle fastener. Use a Phillips screwdriver.



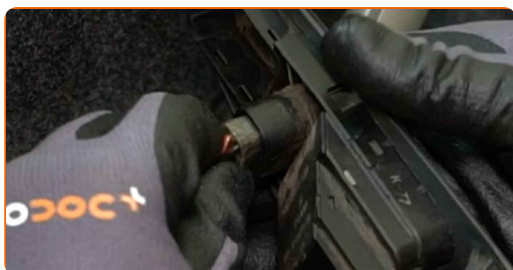
37 Attach the door handle trim panel.



38 Treat the window regulator connectors. Use dielectric grease.



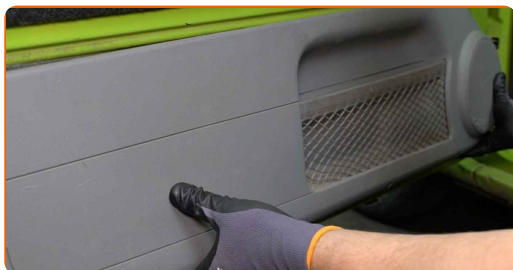
39 Attach the power window connectors to the control unit.



40 Install the power window switch module.

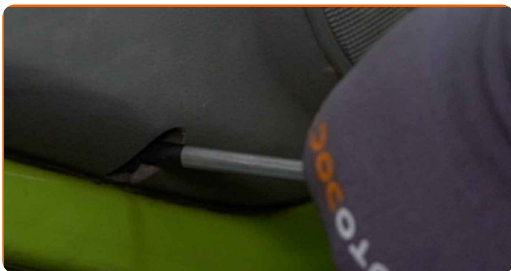


41 Attach the lower door card.



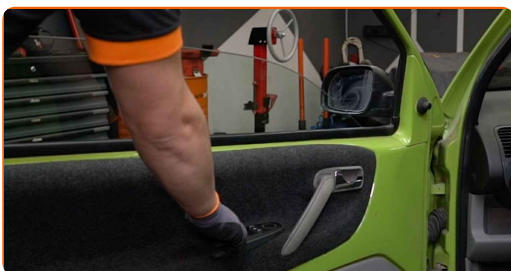
42

Screw in the fasteners of the lower door card. Use a Phillips screwdriver.



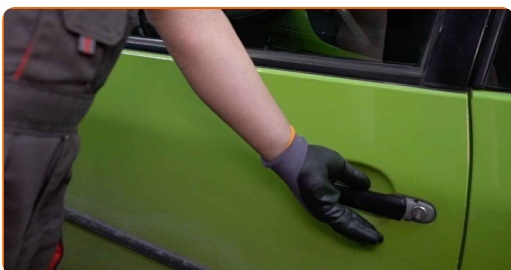
43

Check that the window regulator works correctly.



44

Close the car door.



WELL DONE! 

[VIEW MORE TUTORIALS](#)

AUTODOC – TOP QUALITY AND AFFORDABLE CAR PARTS ONLINE

AUTODOC MOBILE APP: GREAT DEALS AND CONVENIENT SHOPPING



+ AUTODOC

GET IT ON **Google Play**

Download on the **App Store**

Download

A GREAT SELECTION OF SPARE PARTS FOR YOUR CAR

BUY SPARE PARTS FOR VW

WINDOW REGULATOR: A WIDE SELECTION

CHOOSE CAR PARTS FOR VW LUPO 6X1

WINDOW REGULATOR FOR VW: BUY NOW

**WINDOW REGULATOR FOR VW LUPO 6X1: THE BEST
DEALS & OFFERS**

DISCLAIMER:

The document contains only general recommendations that may be useful for you when you perform repair or replacement work. AUTODOC shall not be liable for any loss, injury, damage of property occurring in the repair or replacement process due to incorrect use or misinterpretation of the provided information.

AUTODOC shall not be liable for any possible mistakes and uncertainties in this guide. The information provided is for information purposes only and cannot replace advice from specialists.

AUTODOC shall not be liable for incorrect or hazardous usage of equipment, tools and car parts. AUTODOC strongly recommends to be careful and observe the safety rules when performing repair or replacement works. Remember: usage of low quality auto parts does not guarantee you the appropriate level of road safety.

© Copyright 2023 – All the contents of this website, in particular texts, photographs and graphics, are protected by copyright. All rights, including reproduction, publication, editing and translation rights, are reserved by AUTODOC SE.