



How to change brake  
drum on **VW Lupo 6X1** –  
replacement guide

## VIDEO TUTORIAL

** Important!**

This replacement procedure can be used for:

VW Polo Classic (6V2) 1.6, VW Polo Classic (6V2) 1.4, VW Polo Classic (6V2) 1.9 TDI, VW Polo Classic (6V2) 1.8, VW Lupo (6X1, 6E1) 1.0, VW Lupo (6X1, 6E1) 1.4 16V, VW Lupo (6X1, 6E1) 1.7 SDI, VW Polo Variant (6V5) 1.4, VW Polo Variant (6V5) 1.6, VW Polo Variant (6V5) 1.9 TDI, VW Lupo (6X1, 6E1) 1.2 TDI 3L, VW up! Hatchback (121, 122, BL1, BL2) 1.0, VW POLO (6N2) 1.4 16V, VW POLO (6N2) 1.6 16V GTI, VW POLO (6N2) 1.4 TDI, (+ 21)

---

The steps may slightly vary depending on the car design.

REPLACEMENT: BRAKE DRUM – VW LUPO 6X1. TOOLS YOU'LL NEED:



- Wire brush
- WD-40 spray
- Copper grease
- Wheel impact socket #17
- Ratchet wrench
- Torque wrench
- Phillips screwdriver
- Wheel chock

**BUY TOOLS**

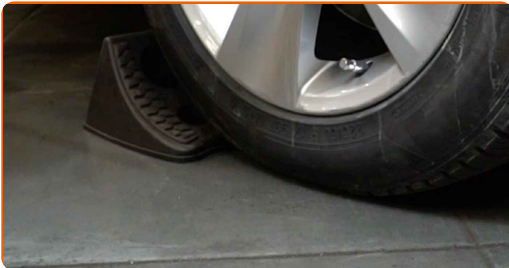
Replacement: brake drum – VW Lupo 6X1. Tip from AUTODOC experts:

- Replace the brake drums on VW Lupo 6X1 in pair for the rear axle. Disregarding the parts state. It ensures even braking.
- The replacement procedure is identical for the right and left brake drums on the same axle.
- When replacing the brake drums, be sure to also change the brake shoes.
- All work should be done with the engine stopped.

**REPLACEMENT: BRAKE DRUM – VW LUPO 6X1. RECOMMENDED SEQUENCE OF STEPS:**

1

Secure the wheels with chocks.



2

Loosen the wheel mounting bolts. Use wheel impact socket #17.



**3** Raise the rear of the car and secure on supports.



**4** Unscrew the wheel bolts.



**AUTODOC recommends:**

- Important! Hold the wheel while unscrewing the fastening bolts. VW Lupo 6X1

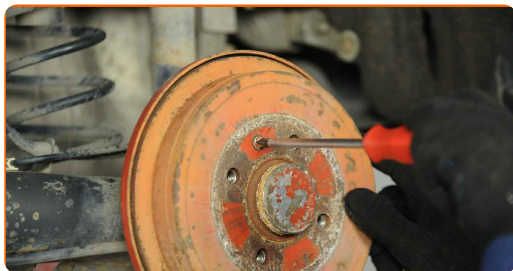
**5** Remove the wheel.



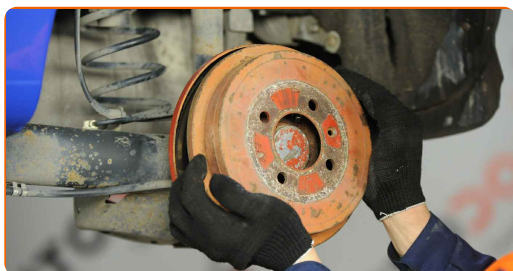
**6** Clean the brake drum fasteners. Use a wire brush. Use WD-40 spray.



**7** Unscrew the brake drum fastening. Use a Phillips screwdriver.



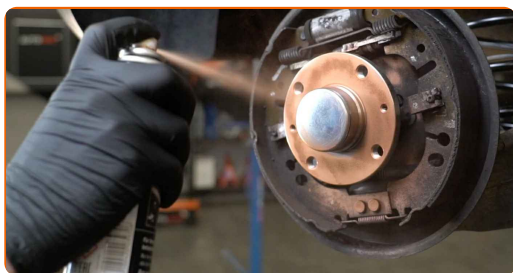
**8** Remove the brake drum.



**Replacement: brake drum – VW Lupo 6X1. Tip:**

- Examine the brake shoes. Replace them if needed.

**9** Clean the hub. Use a wire brush. Treat the contacting surface. Use copper grease.



**10** Install a brake drum.



**11**

Tighten the brake drum fasteners. Use a Phillips screwdriver. Use a torque wrench. Tighten it to 4 Nm torque.



**12**

Clean the wheel rim mounting seat. Use a wire brush.

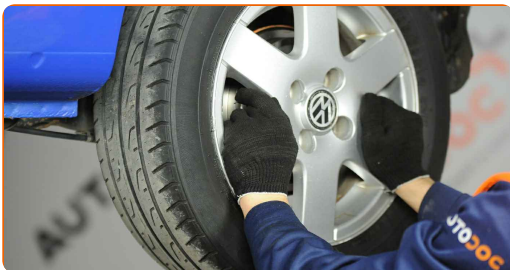
**13**

Treat the surface where the wheel rim contacts the brake drum. Use copper grease.



**14**

Install the wheel.



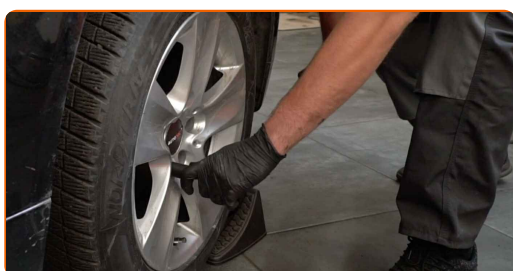
Replacement: brake drum – VW Lupo 6X1. AUTODOC experts recommend:

- To avoid injury, hold up the wheel when screwing in the fastening bolts.

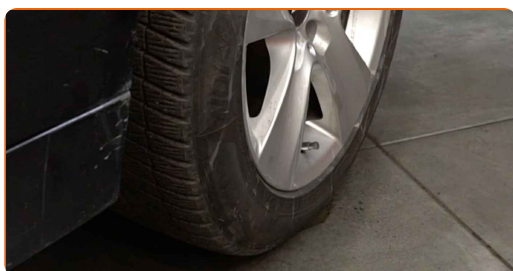
**15** Screw in the wheel bolts. Use wheel impact socket #17.



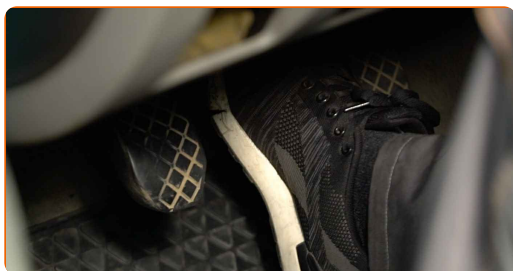
**16** Lower the car and working in a cross order, tighten the wheel bolts. Use wheel impact socket #17. Use a torque wrench. Tighten it to 110 nm torque.



**17** Remove the jacks and chocks.



**18** Adjust the gap between the brake shoes and the drum on VW Lupo 6X1, pressing the brake pedal 10-15 times.



**WELL DONE!** 

**VIEW MORE TUTORIALS**



# AUTODOC – TOP QUALITY AND AFFORDABLE CAR PARTS ONLINE

**AUTODOC MOBILE APP: GREAT DEALS AND CONVENIENT SHOPPING**



**+ AUTODOC**

GET IT ON  **Google Play**

 **Download on the App Store**

**Download**

**A GREAT SELECTION OF SPARE PARTS FOR YOUR CAR**

**BUY SPARE PARTS FOR VW**

**BRAKE DRUM: A WIDE SELECTION**

**CHOOSE CAR PARTS FOR VW LUPO 6X1**

**BRAKE DRUM FOR VW: BUY NOW**

**BRAKE DRUM FOR VW LUPO 6X1: THE BEST DEALS & OFFERS**

### **DISCLAIMER:**

The document contains only general recommendations that may be useful for you when you perform repair or replacement work. AutoDoc shall not be liable for any loss, injury, damage of property occurring in the repair or replacement process due to incorrect use or misinterpretation of the provided information.

AutoDoc shall not be liable for any possible mistakes and uncertainties in this guide. The information provided is for information purposes only and cannot replace advice from specialists.

AutoDoc shall not be liable for incorrect or hazardous usage of equipment, tools and car parts. AutoDoc strongly recommends to be careful and observe the safety rules when performing repair or replacement works. Remember: usage of low quality auto parts does not guarantee you the appropriate level of road safety.

© Copyright 2022 – All the contents of this website, in particular texts, photographs and graphics, are protected by copyright. All rights, including reproduction, publication, editing and translation rights, are reserved by Autodoc GmbH.