



How to change
serpentine belt on **Seat**
Leon 1P1 – replacement
guide

VIDEO TUTORIAL

** Important!**

This replacement procedure can be used for:

SEAT Ibiza II (6K1) 1.4 i, SEAT Cordoba Saloon (6K1, 6K2) 1.9 TDI, SEAT Ibiza II (6K1) 1.9 TDI, SEAT Inca (6K9) 1.9 SDI, SEAT Cordoba Vario (6K5) 1.9 TDI, SEAT Toledo II Saloon (1M2) 1.9 TDI, SEAT Cordoba Saloon (6K1, 6K2) 1.9 SDI, SEAT Cordoba Vario (6K5) 1.9 SDI, SEAT Leon Hatchback (1M1) 1.9 TDI, SEAT Ibiza II (6K1) 1.9 SDI, SEAT Leon Hatchback (1M1) 1.9 SDI, SEAT Leon Hatchback (1M1) 1.9 TDI Syncro, SEAT Altea (5P1) 1.6, SEAT Altea (5P1) 2.0 FSI, SEAT Toledo III (5P2) 1.6, (+ 13)

The steps may slightly vary depending on the car design.

REPLACEMENT: SERPENTINE BELT – SEAT LEON 1P1.
 TOOLS YOU MIGHT NEED:



- Combination spanner #16
- Torx bit T25
- Fender cover

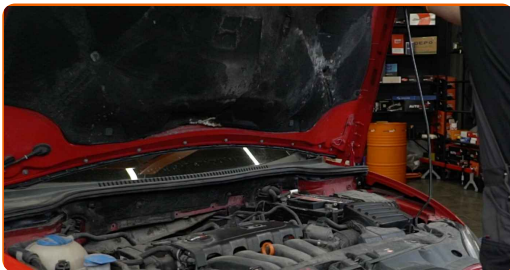
BUY TOOLS

Replacement: serpentine belt – Seat Leon 1P1. AUTODOC experts recommend:

- All work should be done with the engine stopped.

REPLACEMENT: SERPENTINE BELT – SEAT LEON 1P1. USE THE FOLLOWING PROCEDURE:

1 Open the hood.

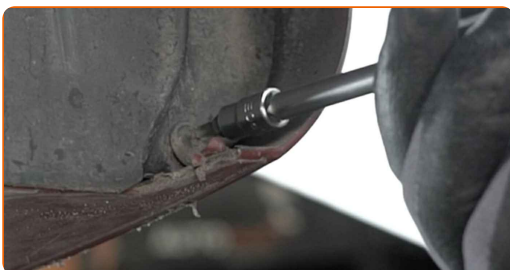


2 Use a fender protection cover to prevent damaging paintwork and plastic parts of the car.

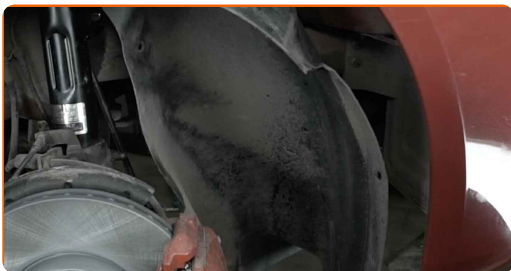


3 Lift the car using a jack or place it over an inspection pit.

4 Unscrew and remove the wheel arch cover fasteners. Use Torx T25.



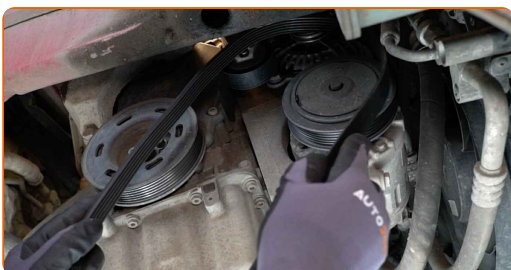
5 Remove the wheel arch cover.



6 Pull aside the V-ribbed belt tensioner pulley. Use a combination spanner #16.



7 Remove the V-ribbed belt.



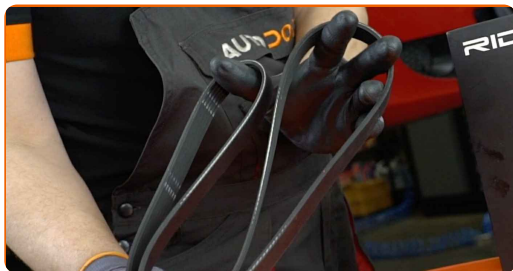
AUTODOC recommends:

- Check the condition of the tensioner pulley and idler pulley. Replace them if necessary.

8 Return the tensioner pulley to its initial position.



9 Install the V-ribbed belt.



Replacement: serpentine belt – Seat Leon 1P1. Professionals recommend:

- Make sure that the V-ribbed belt fits all pulleys snugly.
- Make sure that the V-ribbed belt is properly tensioned.

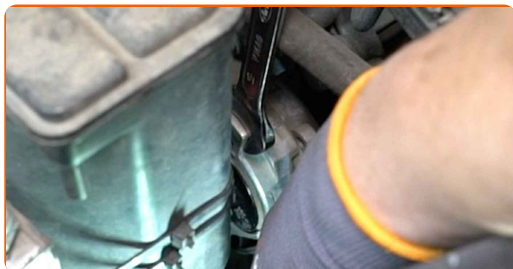
10 Pull aside the V-ribbed belt tensioner pulley. Use a combination spanner #16.



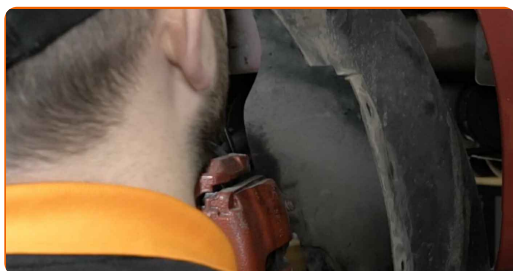
11 Place the V-ribbed belt on the tensioner pulley.



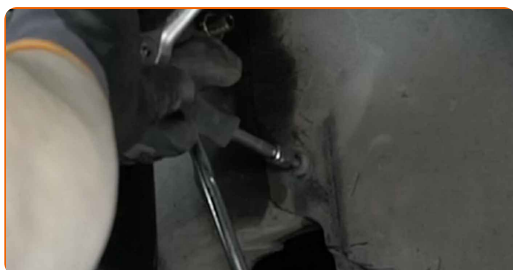
12 Return the tensioner pulley to its initial position.



13 Install the wheel arch cover to its mounting seat.



14 Install and tighten the wheel arch cover fasteners. Use Torx T25.



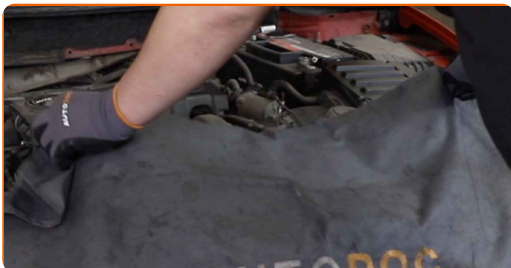
15 Lower the car.

16 Run the engine for a few minutes. This is necessary in order to make sure that the component operates properly.

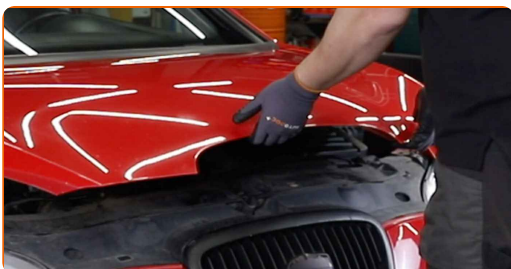


17 Shut off the engine.

18 Remove the fender protection cover.



19 Close the hood.



WELL DONE! 

VIEW MORE TUTORIALS

AUTODOC – TOP QUALITY AND AFFORDABLE CAR PARTS ONLINE

AUTODOC MOBILE APP: GREAT DEALS AND CONVENIENT SHOPPING



+ AUTODOC

GET IT ON  **Google Play**

 **Download on the App Store**

Download

A GREAT SELECTION OF SPARE PARTS FOR YOUR CAR

BUY SPARE PARTS FOR SEAT

SERPENTINE BELT: A WIDE SELECTION

CHOOSE CAR PARTS FOR SEAT LEON 1P1

SERPENTINE BELT FOR SEAT: BUY NOW

SERPENTINE BELT FOR SEAT LEON 1P1: THE BEST DEALS & OFFERS

DISCLAIMER:

The document contains only general recommendations that may be useful for you when you perform repair or replacement work. AUTODOC shall not be liable for any loss, injury, damage of property occurring in the repair or replacement process due to incorrect use or misinterpretation of the provided information.

AUTODOC shall not be liable for any possible mistakes and uncertainties in this guide. The information provided is for information purposes only and cannot replace advice from specialists.

AUTODOC shall not be liable for incorrect or hazardous usage of equipment, tools and car parts. AUTODOC strongly recommends to be careful and observe the safety rules when performing repair or replacement works. Remember: usage of low quality auto parts does not guarantee you the appropriate level of road safety.

© Copyright 2023 – All the contents of this website, in particular texts, photographs and graphics, are protected by copyright. All rights, including reproduction, publication, editing and translation rights, are reserved by AUTODOC SE.