



How to change rear
wheel bearing on **Seat**
Leon 1P1 – replacement
guide

VIDEO TUTORIAL



Important!

This replacement procedure can be used for:

SEAT Leon Hatchback (1P1) 1.6 TDI, SEAT Altea (5P1) 1.6, SEAT Altea (5P1) 2.0 FSI, SEAT Altea (5P1) 1.9 TDI, SEAT Altea (5P1) 2.0 TDI 16V, SEAT Altea (5P1) 2.0 TDI, SEAT Leon Hatchback (1P1) 1.6, SEAT Leon Hatchback (1P1) 2.0 FSI, SEAT Leon Hatchback (1P1) 2.0 TFSI, SEAT Leon Hatchback (1P1) 1.9 TDI, SEAT Leon Hatchback (1P1) 2.0 TDI 16V, SEAT Leon Hatchback (1P1) 2.0 TDI, SEAT Altea (5P1) 2.0 TFSI, SEAT Altea XL (5P5, 5P8) 1.6, SEAT Altea XL (5P5, 5P8) 2.0 FSI, (+ 24)

The steps may slightly vary depending on the car design.

**REPLACEMENT: WHEEL BEARING – SEAT LEON 1P1.
LIST OF THE TOOLS YOU'LL NEED:**



- Wire brush
- Nylon cleaning brush
- WD-40 spray
- Brake cleaner
- All-purpose cleaning spray
- Anti-squeal paste
- Ceramic grease
- Torque wrench
- Combination spanner #13
- Combination spanner #15
- XZN socket bit #14
- XZN socket bit #18
- Torx bit T30
- Wheel impact socket #17
- Ratchet wrench
- Tap wrench
- Impact screwdriver
- Rubber mallet
- Brake caliper wind back tool
- Crow bar
- Hydraulic transmission jack
- Wheel chock

BUY TOOLS

AUTODOC recommends:

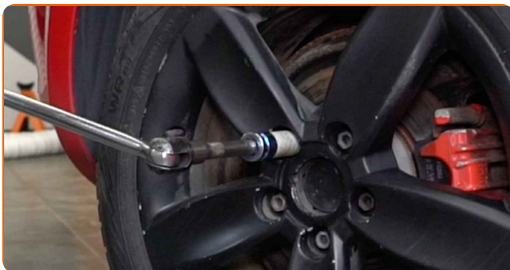
- Do not re-use the bearing assembly of your Seat Leon 1P1 car.
- The wheel hub bearing replacement procedure is identical for both wheels on the same axle.
- Please note: all work on the car – Seat Leon 1P1 – should be done with the engine switched off.

CARRY OUT REPLACEMENT IN THE FOLLOWING ORDER:

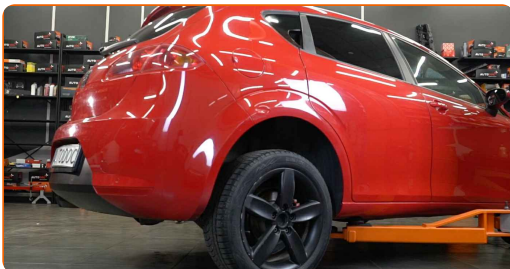
1 Open the bonnet. Unscrew the brake fluid reservoir cap.

2 Secure the wheels with chocks.

3 Loosen the wheel mounting bolts. Use wheel impact socket #17.



4 Raise the car.



Replacement: wheel bearing – Seat Leon 1P1. AUTODOC experts recommend:

- If you are using a jack, make sure it rests on a flat surface without any unevenness.
- Be sure to additionally secure the car with jack stands.

5

Unscrew the wheel bolts.



AUTODOC recommends:

- Warning! To avoid injury, hold the wheel while unscrewing the fastening bolts.
Seat Leon 1P1

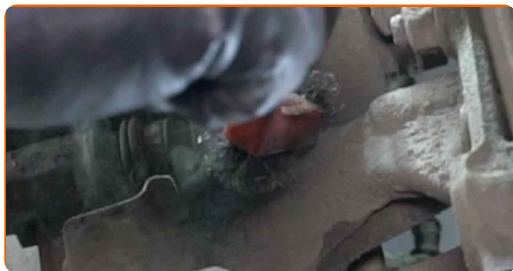
6

Remove the wheel.



7

Clean the brake caliper fasteners. Use a wire brush. Use WD-40 spray.



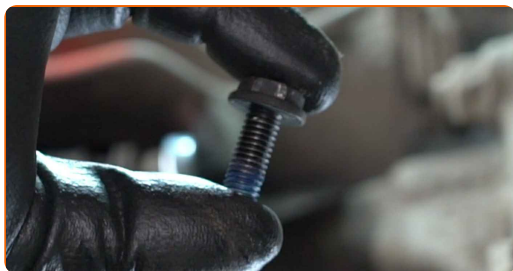
8

Unscrew the brake caliper fasteners. Use a combination spanner #13. Use a combination spanner #15.



9

Remove the fastening bolts.



10

Remove the brake caliper. Use a crowbar.

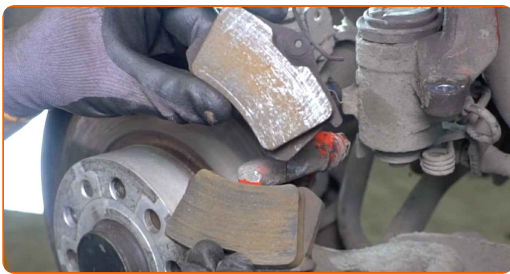


Replacement: wheel bearing – Seat Leon 1P1. Tip from AUTODOC experts:

- Tie the caliper to the suspension or to the body with a wire without disconnecting from the brake hose to prevent depressurization of the brake system.
- Make sure that the brake caliper is not hanging on the brake hose.
- Don't press the brake pedal after the brake caliper has been removed. As a result, the piston can fall out from the brake cylinder, and brake fluid leakage and depressurization of the system may occur.

11

Remove the brake pads.

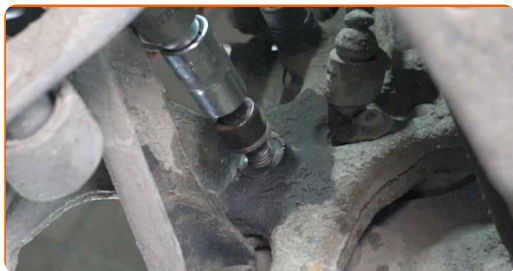


12

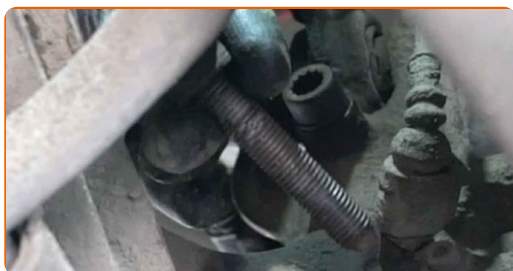
Clean the brake caliper bracket fasteners. Use a wire brush. Use WD-40 spray.



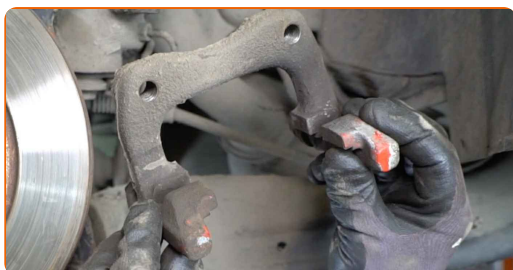
13 Unscrew the brake caliper bracket fasteners. Use XZN #14. Use a ratchet wrench.



14 Remove the fastening bolts.



15 Remove the caliper bracket.



16 Clean the brake disc fasteners. Use a wire brush. Use WD-40 spray.



17

Unscrew the brake disc fastening. Use Torx T30. Use an impact screwdriver.



18

Remove the brake disc.



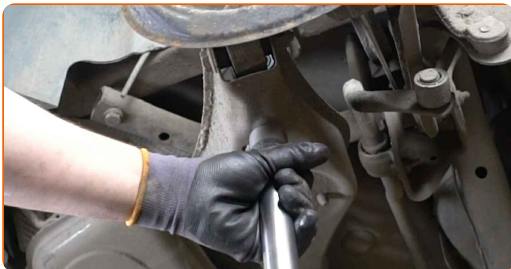
19

Remove the hub bearing protection cap. Use a crowbar. Use a rubber mallet.



20

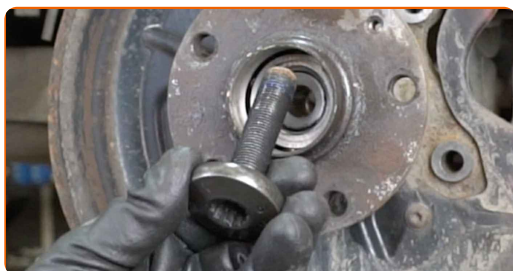
Support the control arm. Use a hydraulic transmission jack.



21 Unscrew the wheel hub axle nut. Use XZN #18. Use a tap wrench.



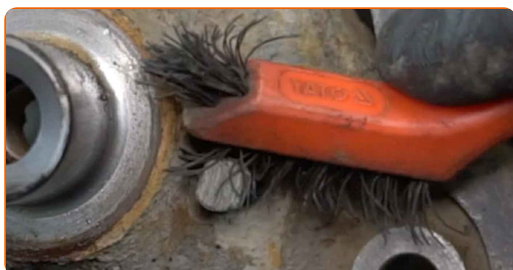
22 Remove the fastening bolt.



23 Remove the hub and the bearing together, since they are a sealed unit.



24 Clean the hub bearing mounting seat. Use a wire brush. Use all-purpose cleaning spray.



25 Install the new wheel hub with a bearing.



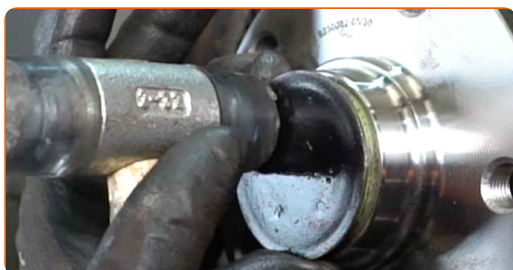
26 Install the fastening bolt.



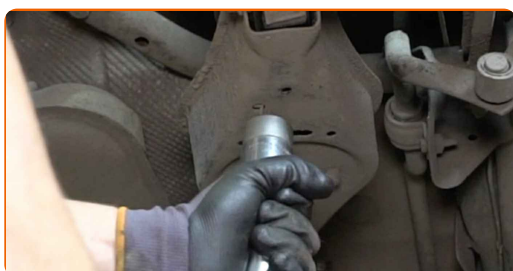
27 Tighten the hub. Use XZN #18. Use a torque wrench. Tighten it to 180 nm torque.



28 Install the hub bearing protection cap. Use a rubber mallet.



29 Remove the support from under the control arm.



AUTODOC recommends:

- Seat Leon 1P1 – Do not lower the transmission jack sharply to avoid damaging components and mechanisms of the car.

30

Treat the hub where it contacts the brake disk. Use ceramic grease.



31

Install the brake disc.



32

Tighten the brake disc fastening. Use Torx T30. Use a torque wrench. Tighten it to 4 Nm torque.



33

Clean the brake caliper bracket from dirt and dust. Use a wire brush. Use a brake cleaner.



AUTODOC recommends:

- Replacement: wheel bearing – Seat Leon 1P1. After applying the spray, wait a few minutes.
- Check the brake caliper bracket, brake caliper guide pins and boots. Clean them. Replace, if necessary.

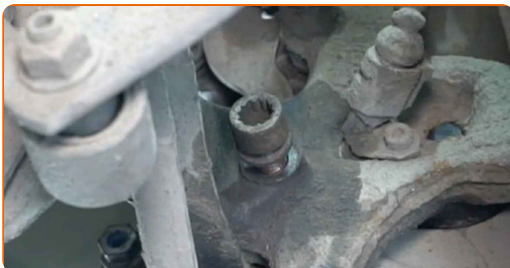
34

Install the brake caliper bracket.

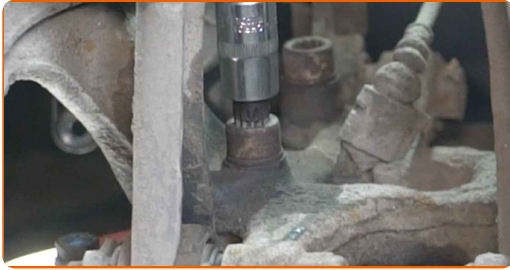


35

Install the fastening bolts.



36 Tighten the brake caliper bracket fasteners. Use XZN #14. Use a torque wrench. Tighten it to 90 Nm torque.



37 Treat the brake caliper piston. Use a nylon cleaning brush. Use a brake cleaner.



AUTODOC recommends:

- After applying the spray, wait a few minutes.

38 Press in the brake caliper piston. Use brake caliper wind back tool.



- 39** Treat the brake pads in the area where their surface comes into contact with the brake caliper bracket. Use anti-squeal paste.



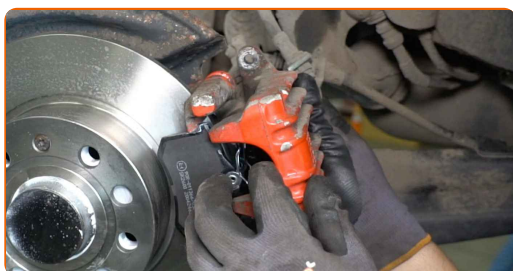
Replacement: wheel bearing – Seat Leon 1P1. AUTODOC experts recommend:

- Make sure the disc surface is clean before installing the pads.

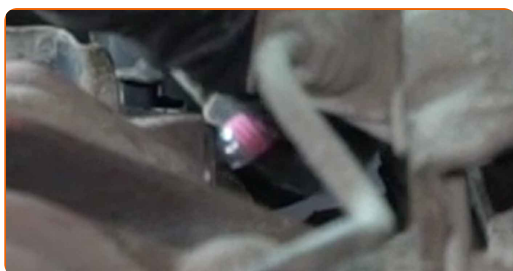
- 40** Install the brake pads.



- 41** Install the brake caliper and fix it.



- 42** Install the fastening bolts.



43

Tighten the brake caliper fasteners. Use a combination spanner #13. Use a combination spanner #15. Use a torque wrench. Tighten it to 35 nm torque.



44

Clean the wheel rim mounting seat. Use a wire brush.



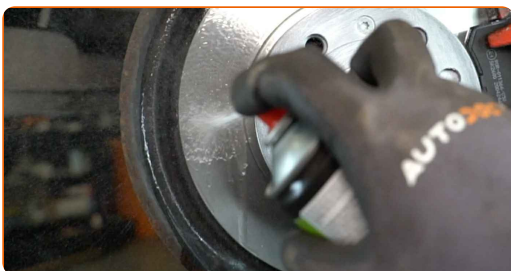
45

Treat the surface where the brake disc contacts the wheel rim. Use ceramic grease.



46

Clean the brake disk surface. Use a brake cleaner.



AUTODOC recommends:

- Replacement: wheel bearing – Seat Leon 1P1. After applying the spray, wait a few minutes.

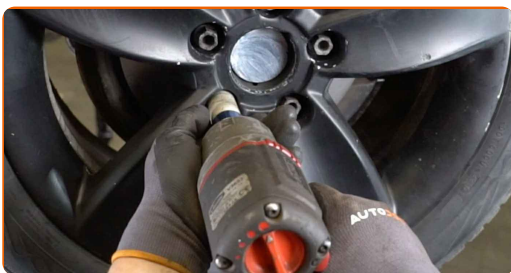
47 Install the wheel.



AUTODOC recommends:

- Important! Hold the wheel while screwing in the fastening bolts. Seat Leon 1P1

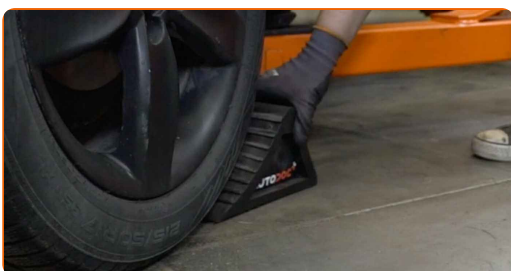
48 Screw in the wheel bolts. Use wheel impact socket #17.



49 Lower the car and working in a cross order, tighten the wheel bolts. Use wheel impact socket #17. Use a torque wrench. Tighten it to 120 Nm torque.



50 Remove the jacks and chocks.



Replacement: wheel bearing – Seat Leon 1P1. AUTODOC experts recommend:

- Without starting the engine, press the brake pedal several times until you feel significant resistance.
- Check the brake fluid level in the expansion tank and refill if necessary.

51

Tighten the brake fluid reservoir cap. Close the hood.

WELL DONE! 

[VIEW MORE TUTORIALS](#)

AUTODOC – TOP QUALITY AND AFFORDABLE CAR PARTS ONLINE

AUTODOC MOBILE APP: GREAT DEALS AND CONVENIENT SHOPPING



+ AUTODOC

GET IT ON  **Google Play**

 **Download on the App Store**

Download

A GREAT SELECTION OF SPARE PARTS FOR YOUR CAR

BUY SPARE PARTS FOR SEAT

WHEEL BEARING: A WIDE SELECTION

CHOOSE CAR PARTS FOR SEAT LEON 1P1

WHEEL BEARING FOR SEAT: BUY NOW

WHEEL BEARING FOR SEAT LEON 1P1: THE BEST DEALS & OFFERS

DISCLAIMER:

The document contains only general recommendations that may be useful for you when you perform repair or replacement work. AUTODOC shall not be liable for any loss, injury, damage of property occurring in the repair or replacement process due to incorrect use or misinterpretation of the provided information.

AUTODOC shall not be liable for any possible mistakes and uncertainties in this guide. The information provided is for information purposes only and cannot replace advice from specialists.

AUTODOC shall not be liable for incorrect or hazardous usage of equipment, tools and car parts. AUTODOC strongly recommends to be careful and observe the safety rules when performing repair or replacement works. Remember: usage of low quality auto parts does not guarantee you the appropriate level of road safety.

© Copyright 2023 – All the contents of this website, in particular texts, photographs and graphics, are protected by copyright. All rights, including reproduction, publication, editing and translation rights, are reserved by AUTODOC SE.