



How to change rear
brake pads on **Seat Leon**
1P1 – replacement guide

VIDEO TUTORIAL

** Important!**

This replacement procedure can be used for:

SEAT Ibiza IV Hatchback (6J5, 6P1) 1.2, SEAT Ibiza IV Sportcoupe (6J, 6P) 1.2 TDI, SEAT Leon Hatchback (1P1) 1.6 TDI, SEAT TOLEDO I (1L) 2.0 i, SEAT Ibiza II (6K1) 1.9 SDI, SEAT Ibiza II (6K1) 1.9 TD, SEAT Ibiza II (6K1) 1.0, SEAT Ibiza II (6K1) 1.3 i, SEAT Ibiza II (6K1) 1.6 i, SEAT Ibiza II (6K1) 1.8 i, SEAT Ibiza II (6K1) 2.0 i, SEAT Cordoba Saloon (6K1, 6K2) 1.4 i, SEAT Cordoba Saloon (6K1, 6K2) 1.6 i, SEAT Ibiza II (6K1) 1.4 i, SEAT Ibiza II (6K1) 1.8 i 16V, (+ 152)

The steps may slightly vary depending on the car design.

REPLACEMENT: BRAKE PADS – SEAT LEON 1P1. LIST OF THE TOOLS YOU'LL NEED:



- Wire brush
- Nylon cleaning brush
- WD-40 spray
- Brake cleaner
- Anti-squeal paste
- Ceramic grease
- Torque wrench
- Combination spanner #13
- Combination spanner #15
- Drive socket # 13
- Wheel impact socket #17
- Brake caliper wind back tool
- Crow bar
- Wheel chock

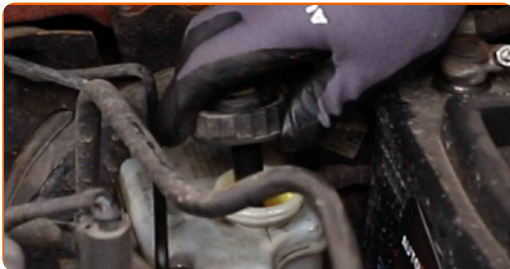
BUY TOOLS

Replacement: brake pads – Seat Leon 1P1. Tip from AUTODOC:

- Perform the replacement of brake pads in complete set for each axis. This provides effective braking.
- The replacement procedure is identical for all brake pads on the same axle.
- Please note: all work on the car – Seat Leon 1P1 – should be done with the engine switched off.

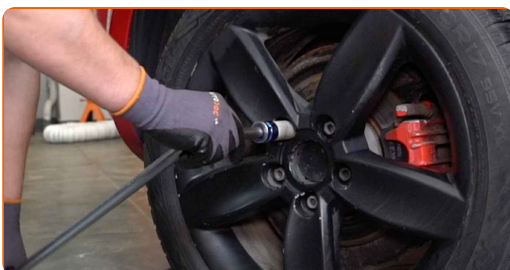
CARRY OUT REPLACEMENT IN THE FOLLOWING ORDER:

1 Open the bonnet. Unscrew the brake fluid reservoir cap.



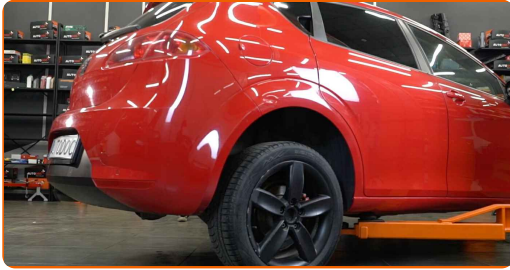
2 Secure the wheels with chocks.

3 Loosen the wheel mounting bolts. Use wheel impact socket #17.



4

Raise the car.



Replacement: brake pads – Seat Leon 1P1. Tip:

- If you are using a jack, make sure it rests on a flat surface without any unevenness.
- Be sure to additionally secure the car with jack stands.

5

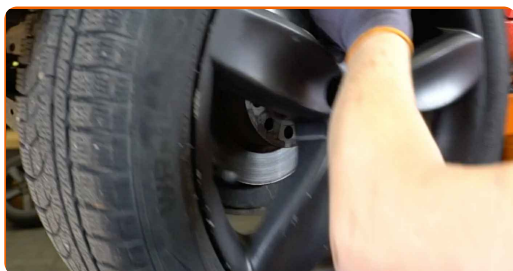
Unscrew the wheel bolts.



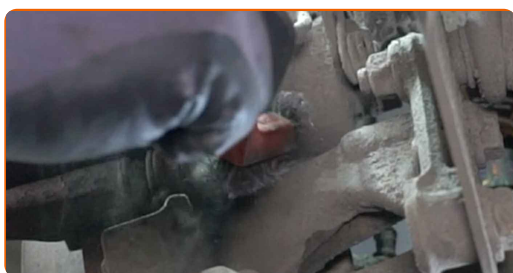
AUTODOC recommends:

- Warning! To avoid injury, hold the wheel while unscrewing the fastening bolts.
Seat Leon 1P1

6 Remove the wheel.



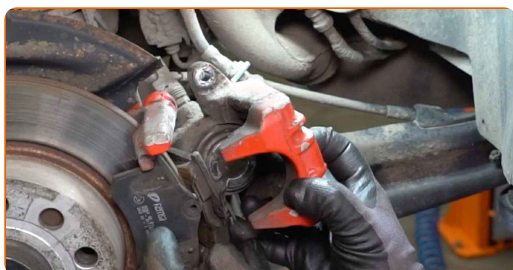
7 Clean the brake caliper fasteners. Use a wire brush. Use WD-40 spray.



8 Unscrew the brake caliper fasteners. Use a combination spanner #13. Use a combination spanner #15.



9 Remove the brake caliper. Use a crowbar.

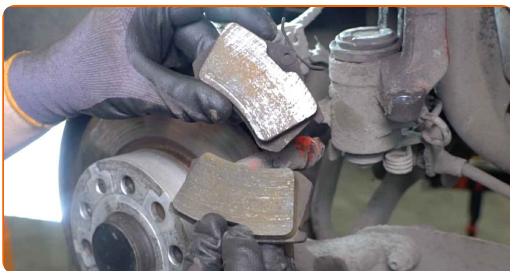


Replacement: brake pads – Seat Leon 1P1. Tip from AUTODOC experts:

- Tie the caliper to the suspension or to the body with a wire without disconnecting from the brake hose to prevent depressurization of the brake system.
- Make sure that the brake caliper is not hanging on the brake hose.
- Don't press the brake pedal after the brake caliper has been removed. As a result, the piston can fall out from the brake cylinder, and brake fluid leakage and depressurization of the system may occur.

10

Remove the brake pads.

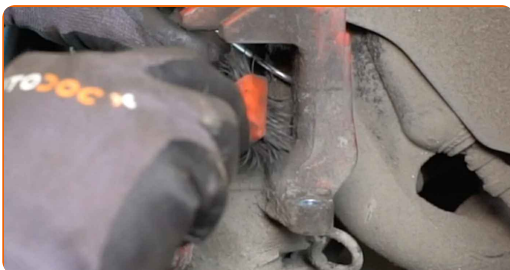


AUTODOC recommends:

- Measure the brake disc thickness. Upon reaching the wear limit the part must be replaced.

11

Treat the brake caliper piston. Use a nylon cleaning brush. Use a brake cleaner.



AUTODOC recommends:

- After applying the spray, wait a few minutes.

12

Press in the brake caliper piston. Use brake caliper wind back tool.



13

Clean the brake caliper bracket from dirt and dust. Use a wire brush. Use a brake cleaner.



AUTODOC recommends:

- Replacement: brake pads – Seat Leon 1P1. After applying the spray, wait a few minutes.
- Check the brake caliper bracket, brake caliper guide pins and boots. Clean them. Replace, if necessary.

- 14** Treat the brake pads in the area where their surface comes into contact with the brake caliper bracket. Use anti-squeal paste.



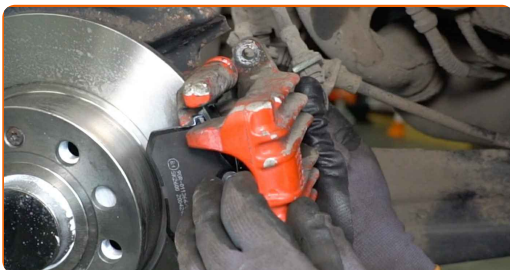
Replacement: brake pads – Seat Leon 1P1. Tip from AUTODOC:

- Make sure the disc surface is clean before installing the pads.

- 15** Install new brake pads.



- 16** Install the brake caliper and fix it. Use a combination spanner #13. Use a combination spanner #15.



- 17** Tighten the brake caliper fasteners. Use a combination spanner #15. Use a drive socket #13. Use a torque wrench. Tighten it to 35 nm torque.



- 18** Clean the wheel rim mounting seat. Use a wire brush.



- 19** Treat the surface where the brake disc contacts the wheel rim. Use ceramic grease.



- 20** Clean the brake disk surface. Use a brake cleaner.



AUTODOC recommends:

- After applying the spray, wait a few minutes.

21 Install the wheel.



AUTODOC recommends:

- Warning! To avoid injury, hold the wheel while screwing in the fastening bolts on the car. Seat Leon 1P1

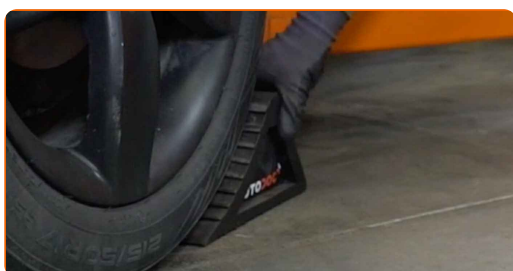
22 Screw in the wheel bolts. Use wheel impact socket #17.



23 Lower the car and working in a cross order, tighten the wheel bolts. Use wheel impact socket #17. Use a torque wrench. Tighten it to 120 Nm torque.



24 Remove the jacks and chocks.

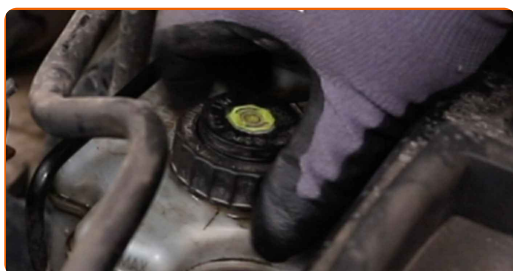


Replacement: brake pads – Seat Leon 1P1. AUTODOC experts recommend:

- Without starting the engine, press the brake pedal several times until you feel significant resistance.
- Check the brake fluid level in the expansion tank and refill if necessary.

25

Tighten the brake fluid reservoir cap. Close the hood.



Replacement: brake pads – Seat Leon 1P1. Tip from AUTODOC:

- Slow down smoothly for first 150-200 km after the brake pads replacement. Avoid unnecessary and sharp braking to a stop.

WELL DONE! 

[VIEW MORE TUTORIALS](#)

AUTODOC – TOP QUALITY AND AFFORDABLE CAR PARTS ONLINE

AUTODOC MOBILE APP: GREAT DEALS AND CONVENIENT SHOPPING



+ AUTODOC

GET IT ON  **Google Play**

 **Download on the App Store**

Download

A GREAT SELECTION OF SPARE PARTS FOR YOUR CAR

BUY SPARE PARTS FOR SEAT

BRAKE PADS: A WIDE SELECTION

CHOOSE CAR PARTS FOR SEAT LEON 1P1

BRAKE PADS FOR SEAT: BUY NOW

BRAKE PADS FOR SEAT LEON 1P1: THE BEST DEALS & OFFERS

DISCLAIMER:

The document contains only general recommendations that may be useful for you when you perform repair or replacement work. AUTODOC shall not be liable for any loss, injury, damage of property occurring in the repair or replacement process due to incorrect use or misinterpretation of the provided information.

AUTODOC shall not be liable for any possible mistakes and uncertainties in this guide. The information provided is for information purposes only and cannot replace advice from specialists.

AUTODOC shall not be liable for incorrect or hazardous usage of equipment, tools and car parts. AUTODOC strongly recommends to be careful and observe the safety rules when performing repair or replacement works. Remember: usage of low quality auto parts does not guarantee you the appropriate level of road safety.

© Copyright 2023 – All the contents of this website, in particular texts, photographs and graphics, are protected by copyright. All rights, including reproduction, publication, editing and translation rights, are reserved by AUTODOC SE.