



How to change track rod
end on **Seat Leon 1M1** –
replacement guide

VIDEO TUTORIAL



Important!

This replacement procedure can be used for:

SEAT Toledo II Saloon (1M2) 1.6, SEAT Toledo II Saloon (1M2) 1.8 20V, SEAT Toledo II Saloon (1M2) 2.3 V5, SEAT Toledo II Saloon (1M2) 1.9 TDI, SEAT Leon Hatchback (1M1) 1.6, SEAT Leon Hatchback (1M1) 1.8 20V, SEAT Leon Hatchback (1M1) 1.9 TDI, SEAT Leon Hatchback (1M1) 1.4 16V, SEAT Leon Hatchback (1M1) 1.8 20V T, SEAT Leon Hatchback (1M1) 1.9 SDI, SEAT Leon Hatchback (1M1) 1.8 20V T 4, SEAT Toledo II Saloon (1M2) 1.4 16V, SEAT Leon Hatchback (1M1) 1.6 16 V, SEAT Leon Hatchback (1M1) 2.8 Cupra 4, SEAT Toledo II Saloon (1M2) 1.6 16V, (+ 4)

The steps may slightly vary depending on the car design.

REPLACEMENT: TRACK ROD END – SEAT LEON 1M1.
LIST OF THE TOOLS YOU'LL NEED:



- Wire brush
- WD-40 spray
- Brake cleaner
- Ceramic grease
- Torque wrench
- Combination spanner #19
- Combination spanner #22
- Drive socket # 18
- Drive socket # 19
- Wheel impact socket #17
- Ball joint puller
- Ratchet wrench
- Tap wrench
- Vernier caliper
- Wheel chock

BUY TOOLS

Replacement: track rod end – Seat Leon 1M1. AUTODOC recommends:

- Replace tie rod ends in pairs.
- The replacement procedure is identical for the right and left tie rod ends.
- Warning! Shut down the engine before starting any work – Seat Leon 1M1.

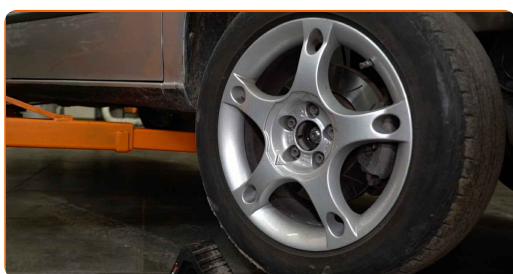
CARRY OUT REPLACEMENT IN THE FOLLOWING ORDER:

1 Secure the wheels with chocks.

2 Loosen the wheel bolts. Use wheel impact socket #17. Use a tap wrench.



3 Raise the car.



Replacement: track rod end – Seat Leon 1M1. Tip:

- If you are using a jack, make sure it rests on a flat surface without any unevenness.
- Be sure to additionally secure the car with jack stands.

4

Unscrew the wheel bolts.



AUTODOC recommends:

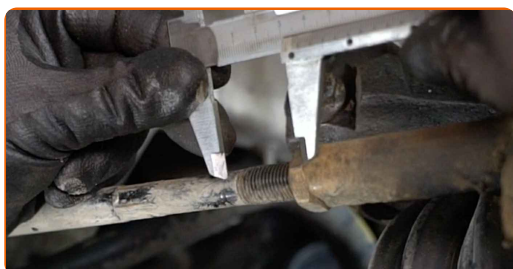
- Warning! To avoid injury, hold the wheel while unscrewing the fastening bolts.
Seat Leon 1M1

5

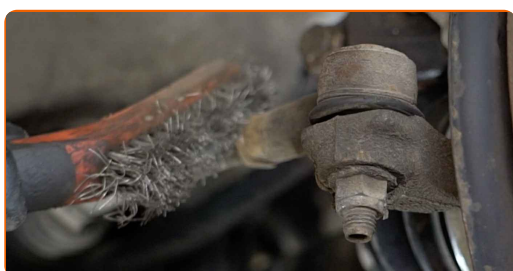
Remove the wheel.



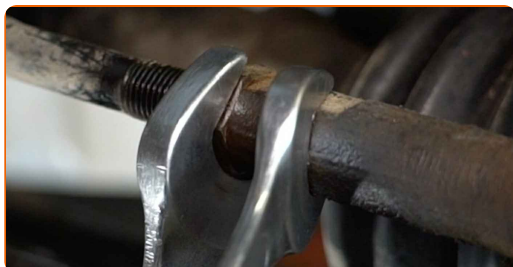
- 6 When deinstalling, mark or measure the precise position of the ball joint on the track rod, or count the number of turns in order to prevent misalignment afterward. Use a vernier caliper.



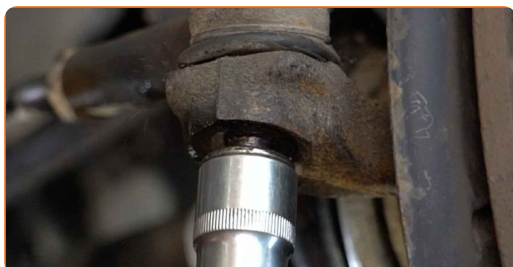
- 7 Clean all tie rod end connections. Use a wire brush. Use WD-40 spray.



- 8 Loosen the lock nut securing the tie rod end to the tie rod. Use a combination spanner #19. Use a combination spanner #22.



- 9 Unscrew the fastening nut connecting the tie rod end to the steering knuckle. Use a drive socket #18. Use a ratchet wrench.



10

Disconnect the tie rod end from the steering knuckle. Use a ball joint puller.



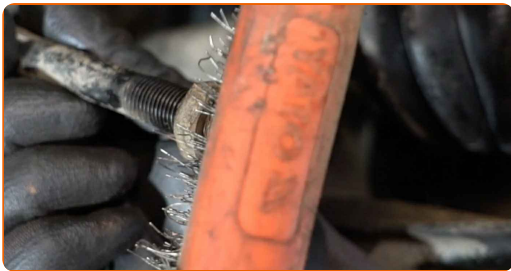
11

Unscrew the tie rod end from the tie rod.



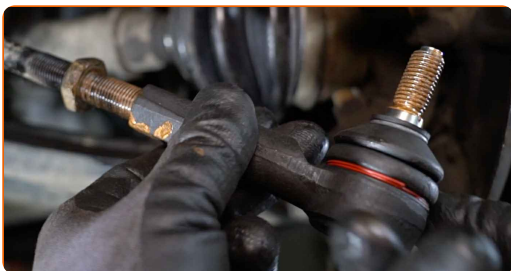
12

Clean the mounting seats of the tie rod end. Use a wire brush. Use WD-40 spray.



13

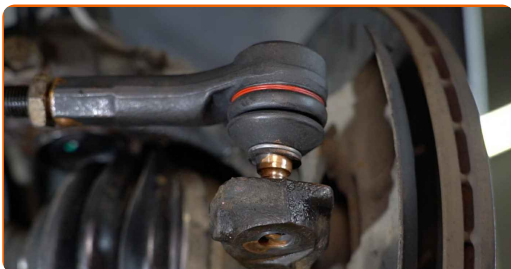
Screw on a new tie rod end.



Replacement: track rod end – Seat Leon 1M1. Tip from AUTODOC:

- While installing the steering rod end remember to make the same number of turns or to leave the same length of thread showing as per your measurements.

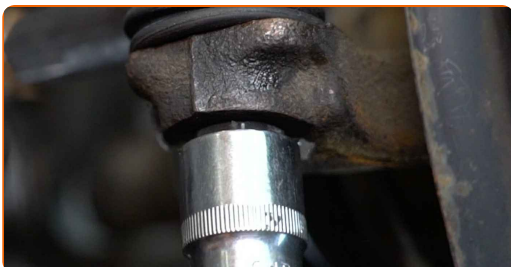
14 Connect the tie rod end to the steering knuckle.



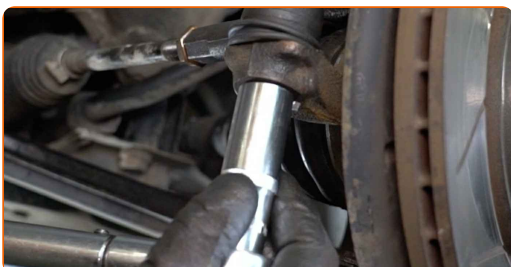
15 Set the tie rod end to the correct position and secure it with the lock nut. Use a vernier caliper. Use a combination spanner #19. Use a combination spanner #22.



16 Screw on the fastening nut that connects the tie rod end to the steering knuckle. Use a drive socket #19. Use a ratchet wrench.



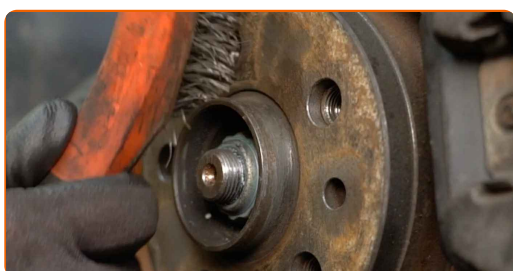
17 Tighten the fastening nut connecting the tie rod end to the steering knuckle. Use a drive socket #19. Use a torque wrench. Tighten it to 45 Nm torque.



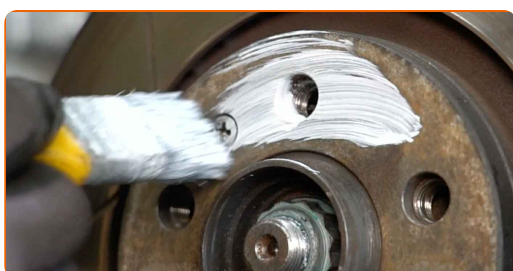
- 18 Tighten the tie rod end locknut. Use a combination spanner #19. Use a combination spanner #22. Use a torque wrench. Tighten it to 50 Nm torque.



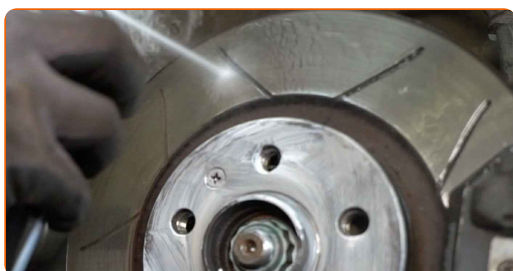
- 19 Clean the wheel rim mounting seat. Use a wire brush.



- 20 Treat the surface where the brake disc contacts the wheel rim. Use ceramic grease.



- 21 Clean the brake disc surface. Use a brake cleaner.



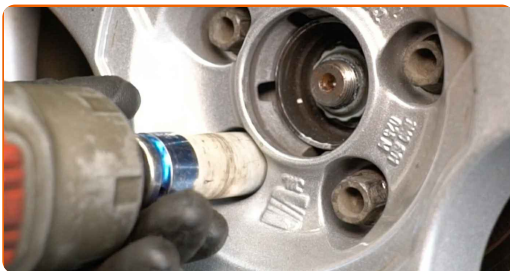
22 Install the wheel.



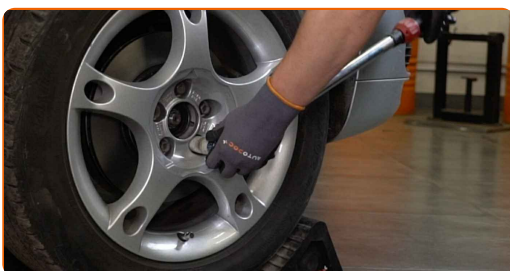
AUTODOC recommends:

- To avoid injury, hold up the wheel when screwing in the fastening bolts.

23 Screw in the wheel bolts. Use wheel impact socket #17. Use a ratchet wrench.



24 Lower the car and working in a cross order, tighten the wheel bolts. Use wheel impact socket #17. Use a torque wrench. Tighten it to 120 Nm torque.



25

Remove the jacks and chocks.



Replacement: track rod end – Seat Leon 1M1. Professionals recommend:

- After replacing the component, it is advisable to realign the wheels using a wheel aligner.

WELL DONE! 

[VIEW MORE TUTORIALS](#)

AUTODOC – TOP QUALITY AND AFFORDABLE CAR PARTS ONLINE

AUTODOC MOBILE APP: GREAT DEALS AND CONVENIENT SHOPPING



+ AUTODOC

GET IT ON
Google Play

Download on the
App Store

Download

A GREAT SELECTION OF SPARE PARTS FOR YOUR CAR

BUY SPARE PARTS FOR SEAT

TRACK ROD END: A WIDE SELECTION

CHOOSE CAR PARTS FOR SEAT LEON 1M1

TRACK ROD END FOR SEAT: BUY NOW

TRACK ROD END FOR SEAT LEON 1M1: THE BEST DEALS & OFFERS

DISCLAIMER:

The document contains only general recommendations that may be useful for you when you perform repair or replacement work. AUTODOC shall not be liable for any loss, injury, damage of property occurring in the repair or replacement process due to incorrect use or misinterpretation of the provided information.

AUTODOC shall not be liable for any possible mistakes and uncertainties in this guide. The information provided is for information purposes only and cannot replace advice from specialists.

AUTODOC shall not be liable for incorrect or hazardous usage of equipment, tools and car parts. AUTODOC strongly recommends to be careful and observe the safety rules when performing repair or replacement works. Remember: usage of low quality auto parts does not guarantee you the appropriate level of road safety.

© Copyright 2023 – All the contents of this website, in particular texts, photographs and graphics, are protected by copyright. All rights, including reproduction, publication, editing and translation rights, are reserved by AUTODOC SE.