



How to change tailgate
struts on **Seat Leon 1M1** –
replacement guide

VIDEO TUTORIAL



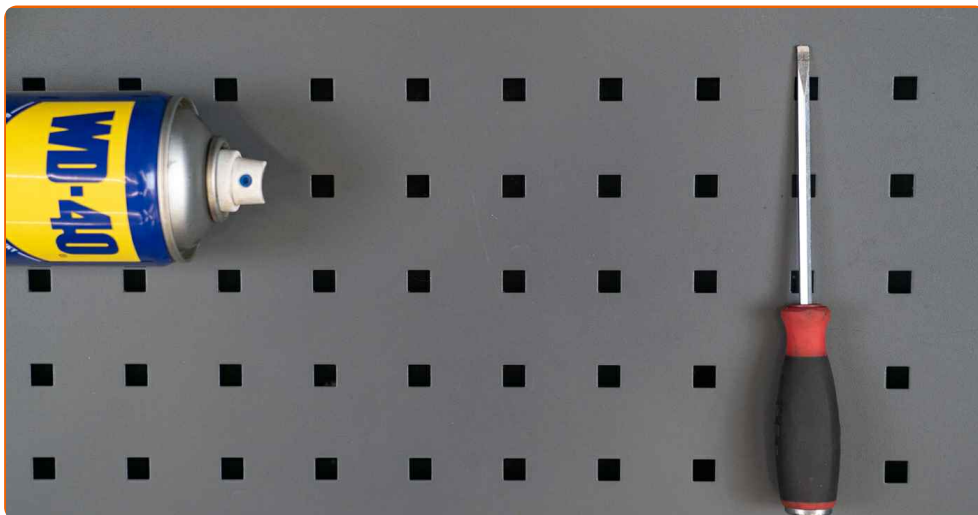
Important!

This replacement procedure can be used for:

SEAT Leon Hatchback (1M1) 1.6, SEAT Leon Hatchback (1M1) 1.9 TDI, SEAT Leon Hatchback (1M1) 1.4 16V, SEAT Leon Hatchback (1M1) 1.8 20V T, SEAT Leon Hatchback (1M1) 1.9 SDI, SEAT Leon Hatchback (1M1) 1.8 20V T 4, SEAT Leon Hatchback (1M1) 1.6 16 V, SEAT Leon Hatchback (1M1) 2.8 Cupra 4, SEAT Leon Hatchback (1M1) 1.8 T Cupra R, SEAT Leon Hatchback (1M1) 1.9 TDI Syncro

The steps may slightly vary depending on the car design.

REPLACEMENT: TAILGATE STRUTS – SEAT LEON 1M1.
LIST OF THE TOOLS YOU'LL NEED:



- WD-40 spray
- Flat screwdriver
- Hydraulic transmission jack

[BUY TOOLS](#)

Replacement: tailgate struts – Seat Leon 1M1. Tip from AUTODOC:

- Right and left gas struts of the boot lid should be replaced simultaneously.
- The replacement procedure is identical for the right and left gas struts of the boot lid.
- All work should be done with the engine stopped.

REPLACEMENT: TAILGATE STRUTS – SEAT LEON 1M1. TAKE THE FOLLOWING STEPS:

1

Open the boot lid.



2

Support the boot lid. Use a hydraulic transmission jack.



3

Release the circlip connecting the gas strut to the boot lid. Use a flat screwdriver.

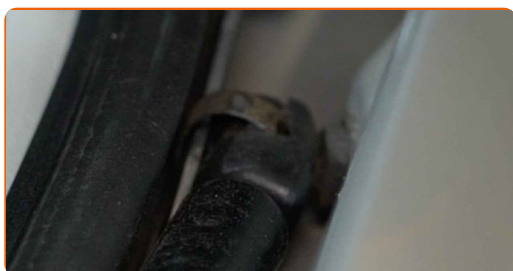


Replacement: tailgate struts – Seat Leon 1M1. AUTODOC recommends:

- To avoid any injuries, be sure to hold the boot lid while demounting the gas struts.

4

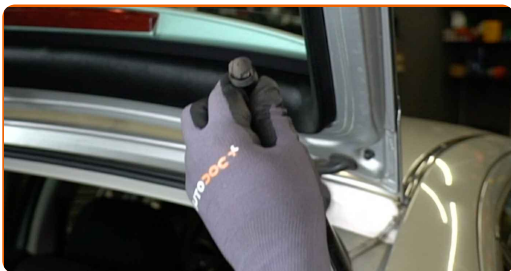
Release the circlip connecting the gas strut to the car body. Use a flat screwdriver.



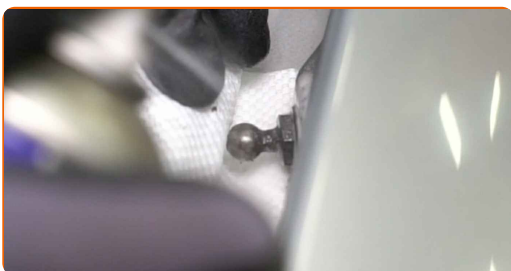
AUTODOC recommends:

- To avoid any injuries, be sure to hold the boot lid while demounting the gas struts.

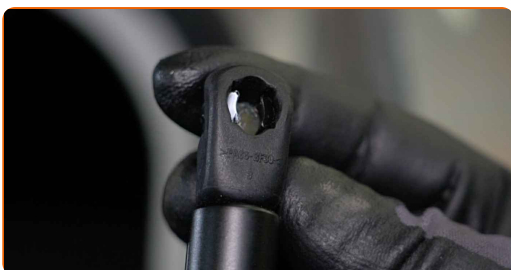
5 Remove the boot lid gas strut.



6 Treat the fasteners of the boot lid gas strut. Use WD-40 spray.



7 Install the new boot lid gas strut.



Replacement: tailgate struts – Seat Leon 1M1. Tip:

- To avoid any injuries, be sure to hold the boot lid while installing the gas strut.

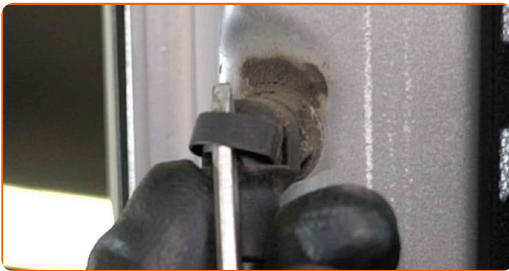
8 Snap on the circlip connecting the gas strut to the car body.



9 Snap on the circlip connecting the gas strut to the boot lid.



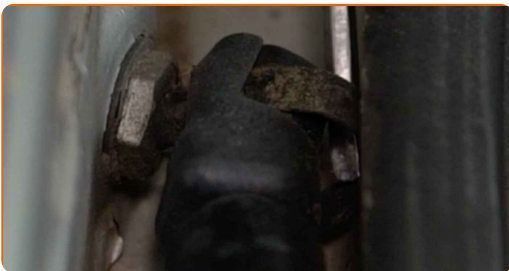
10 Release the circlip connecting the gas strut to the boot lid. Use a flat screwdriver.



AUTODOC recommends:

- To avoid any injuries, be sure to hold the boot lid while demounting the gas struts.

11 Release the circlip connecting the gas strut to the car body. Use a flat screwdriver.

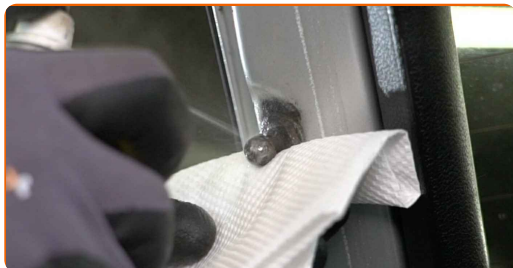


Replacement: tailgate struts – Seat Leon 1M1. AUTODOC experts recommend:

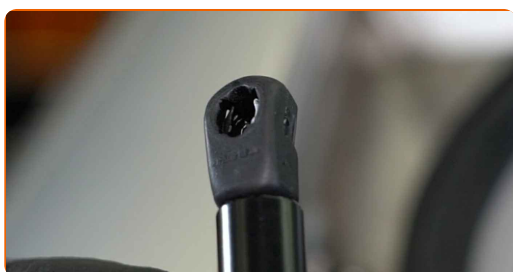
- To avoid any injuries, be sure to hold the boot lid while demounting the gas struts.

12 Remove the boot lid gas strut.

13 Treat the fasteners of the boot lid gas strut. Use WD-40 spray.



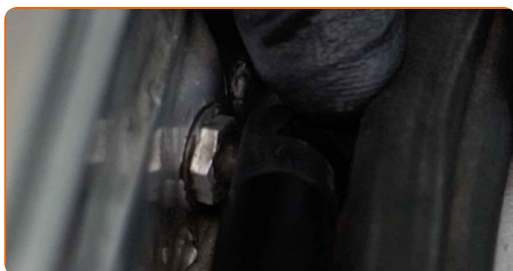
14 Install the new boot lid gas strut.



AUTODOC recommends:

- To avoid any injuries, be sure to hold the boot lid while installing the gas strut.

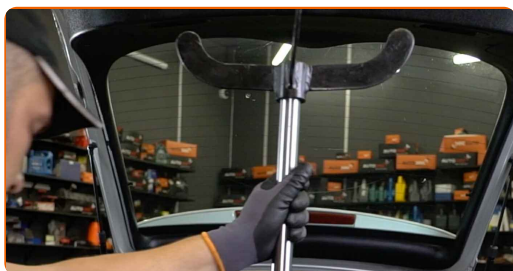
15 Snap on the circlip connecting the gas strut to the car body.



16 Snap on the circlip connecting the gas strut to the boot lid.



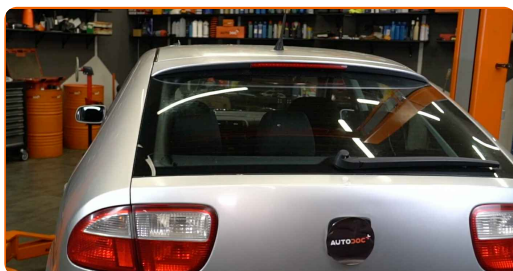
17 Remove the hydraulic transmission jack.



Replacement: tailgate struts – Seat Leon 1M1. Professionals recommend:

- Check the working condition of the boot lid gas springs after they are installed.

18 Close the boot lid.



WELL DONE! 

VIEW MORE TUTORIALS

AUTODOC – TOP QUALITY AND AFFORDABLE CAR PARTS ONLINE

AUTODOC MOBILE APP: GREAT DEALS AND CONVENIENT SHOPPING



+ AUTODOC

GET IT ON  **Google Play**

 **Download on the App Store**

Download

A GREAT SELECTION OF SPARE PARTS FOR YOUR CAR

BUY SPARE PARTS FOR SEAT

TAILGATE STRUTS: A WIDE SELECTION

CHOOSE CAR PARTS FOR SEAT LEON 1M1

TAILGATE STRUTS FOR SEAT: BUY NOW

TAILGATE STRUTS FOR SEAT LEON 1M1: THE BEST DEALS & OFFERS

DISCLAIMER:

The document contains only general recommendations that may be useful for you when you perform repair or replacement work. AUTODOC shall not be liable for any loss, injury, damage of property occurring in the repair or replacement process due to incorrect use or misinterpretation of the provided information.

AUTODOC shall not be liable for any possible mistakes and uncertainties in this guide. The information provided is for information purposes only and cannot replace advice from specialists.

AUTODOC shall not be liable for incorrect or hazardous usage of equipment, tools and car parts. AUTODOC strongly recommends to be careful and observe the safety rules when performing repair or replacement works. Remember: usage of low quality auto parts does not guarantee you the appropriate level of road safety.

© Copyright 2022 – All the contents of this website, in particular texts, photographs and graphics, are protected by copyright. All rights, including reproduction, publication, editing and translation rights, are reserved by AUTODOC GmbH.