



How to change pollen
filter on **Seat Leon 1M1** –
replacement guide

VIDEO TUTORIAL



Important!

This replacement procedure can be used for:

SEAT Ibiza II (6K1) 1.9 SDI, SEAT Ibiza II (6K1) 1.9 TD, SEAT Ibiza II (6K1) 1.0, SEAT Ibiza II (6K1) 1.3 i, SEAT Ibiza II (6K1) 1.6 i, SEAT Ibiza II (6K1) 1.8 i, SEAT Cordoba Saloon (6K1, 6K2) 1.4 i, SEAT Cordoba Saloon (6K1, 6K2) 1.6 i, SEAT Cordoba Saloon (6K1, 6K2) 2.0 i, SEAT Cordoba Saloon (6K1, 6K2) 1.9 D, SEAT Cordoba Saloon (6K1, 6K2) 1.9 TD, SEAT Cordoba Saloon (6K1, 6K2) 1.8 i 16V, SEAT Ibiza II (6K1) 1.8 i 16V, SEAT Inca (6K9) 1.4 i, SEAT Inca (6K9) 1.6 i, (+ 51)

The steps may slightly vary depending on the car design.

REPLACEMENT: POLLEN FILTER – SEAT LEON 1M1.
LIST OF THE TOOLS YOU'LL NEED:



• Phillips screwdriver

• Fender cover

BUY TOOLS

AUTODOC recommends:

- Replace the cabin filter at least once every six months, in early spring and autumn seasons.
- Follow the terms, recommendations and requirements of the part operation provided by the manufacturer.
- If the air flow into the cabin has sharply reduced, replace the filter before a scheduled maintenance.
- All work should be done with the engine stopped.

REPLACEMENT: POLLEN FILTER – SEAT LEON 1M1. RECOMMENDED SEQUENCE OF STEPS:

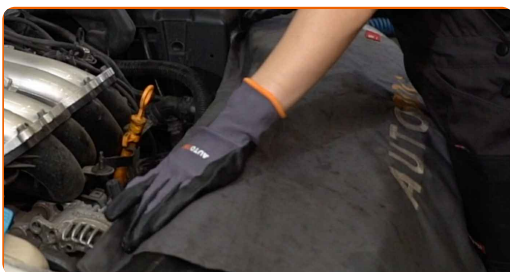
1

Open the bonnet.

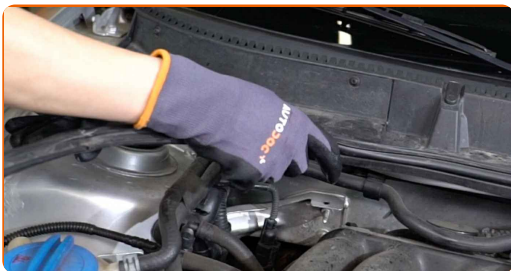


2

Use a fender protection cover to prevent damaging paintwork and plastic parts of the car.



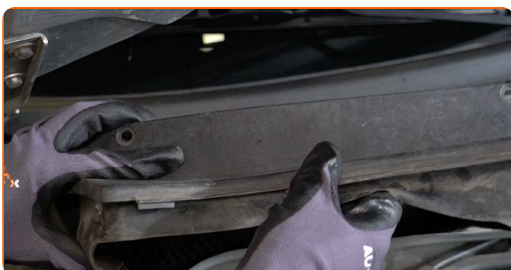
3 Remove the cowl grille seal.



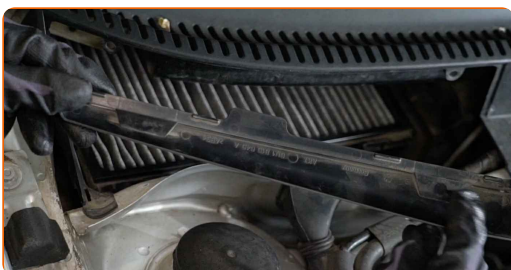
4 Unscrew the plastic panel fasteners. Use a Phillips screwdriver.



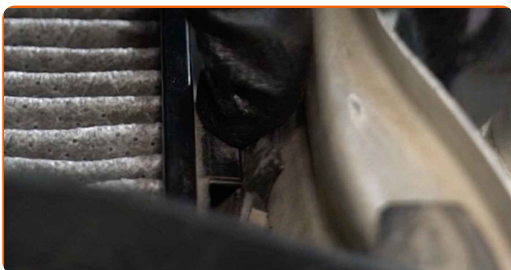
5 Remove the plastic panel.



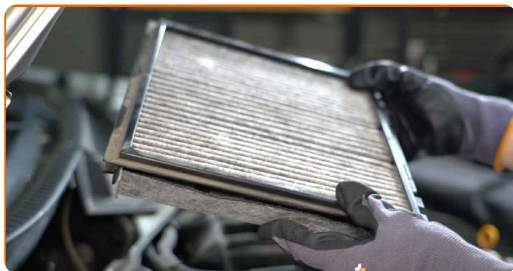
6 Remove the cabin filter housing cover.



7 Press on the cabin filter retainer to release it.



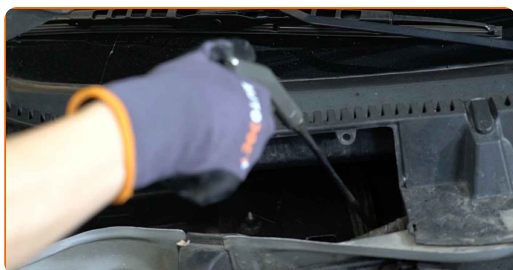
8 Remove the cabin filter.



9 Switch on the air recirculation mode.



10 Clean the mounting seat of the cabin filter.



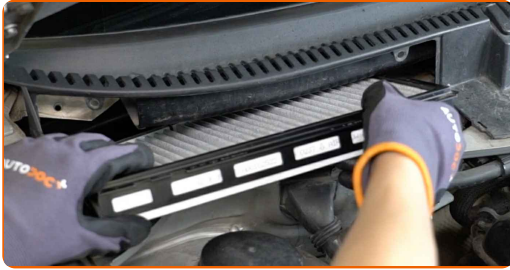
11 Install a new filter element into the frame.



Replacement: pollen filter – Seat Leon 1M1. AUTODOC recommends:

- Follow the air flow direction arrow on the filter.
- Take care to only use quality filters.

12 Install the cabin filter to its mounting seat.



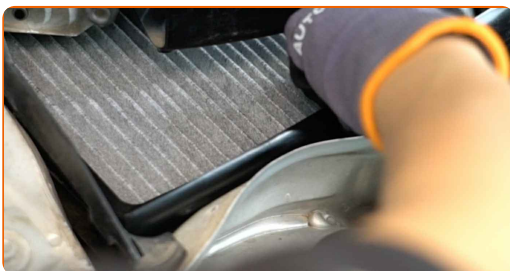
AUTODOC recommends:

- Replacement: pollen filter – Seat Leon 1M1. Be sure to position the filtering element correctly. Avoid misalignment.

13 Snap the cabin filter back in place.



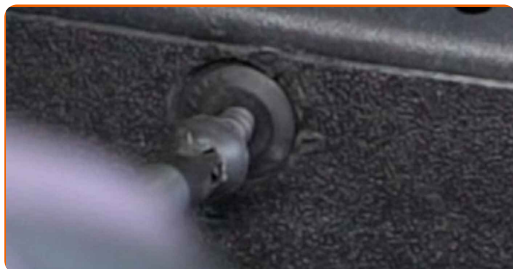
14 Install the cabin filter housing cover.



15 Install the plastic panel.



16 Screw on the plastic panel fasteners. Use a Phillips screwdriver.

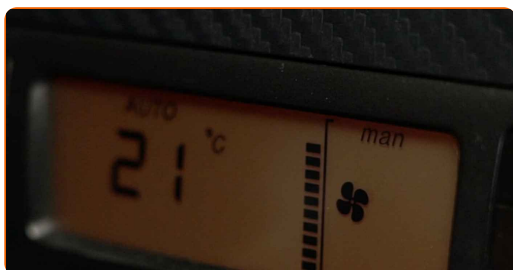


17 Install the cowl grille seal.



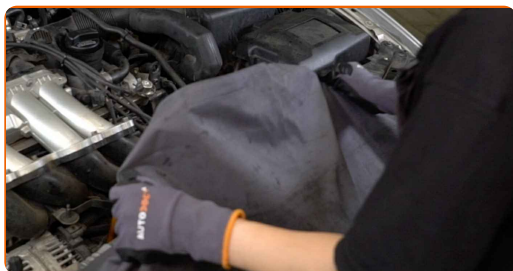
18 Switch on the ignition.

19 Switch on the air conditioning system. This is necessary in order to make sure that the component operates properly.



20 Switch off the ignition.

21 Remove the fender protection cover.



22

Close the bonnet.



WELL DONE! 

VIEW MORE TUTORIALS

AUTODOC – TOP QUALITY AND AFFORDABLE CAR PARTS ONLINE

AUTODOC MOBILE APP: GREAT DEALS AND CONVENIENT SHOPPING



+ AUTODOC

GET IT ON
Google Play

Download on the
App Store

Download

A GREAT SELECTION OF SPARE PARTS FOR YOUR CAR

BUY SPARE PARTS FOR SEAT

POLLEN FILTER: A WIDE SELECTION

CHOOSE CAR PARTS FOR SEAT LEON 1M1

POLLEN FILTER FOR SEAT: BUY NOW

POLLEN FILTER FOR SEAT LEON 1M1: THE BEST DEALS & OFFERS

DISCLAIMER:

The document contains only general recommendations that may be useful for you when you perform repair or replacement work. AUTODOC shall not be liable for any loss, injury, damage of property occurring in the repair or replacement process due to incorrect use or misinterpretation of the provided information.

AUTODOC shall not be liable for any possible mistakes and uncertainties in this guide. The information provided is for information purposes only and cannot replace advice from specialists.

AUTODOC shall not be liable for incorrect or hazardous usage of equipment, tools and car parts. AUTODOC strongly recommends to be careful and observe the safety rules when performing repair or replacement works. Remember: usage of low quality auto parts does not guarantee you the appropriate level of road safety.

© Copyright 2022 – All the contents of this website, in particular texts, photographs and graphics, are protected by copyright. All rights, including reproduction, publication, editing and translation rights, are reserved by AUTODOC GmbH.