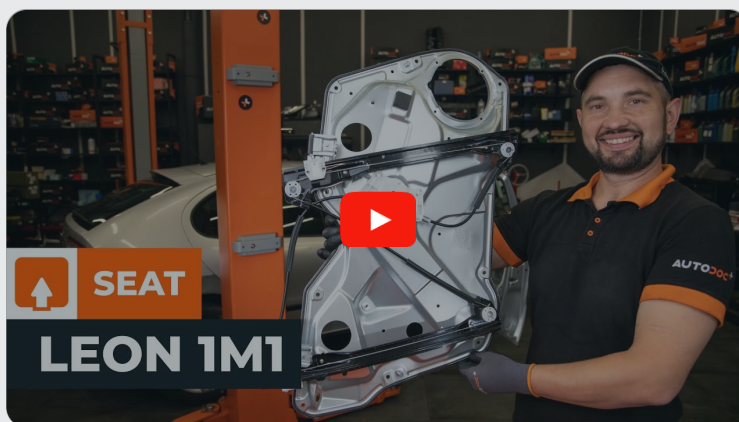




How to change front  
window regulator on  
**Seat Leon 1M1** –  
replacement guide

## VIDEO TUTORIAL



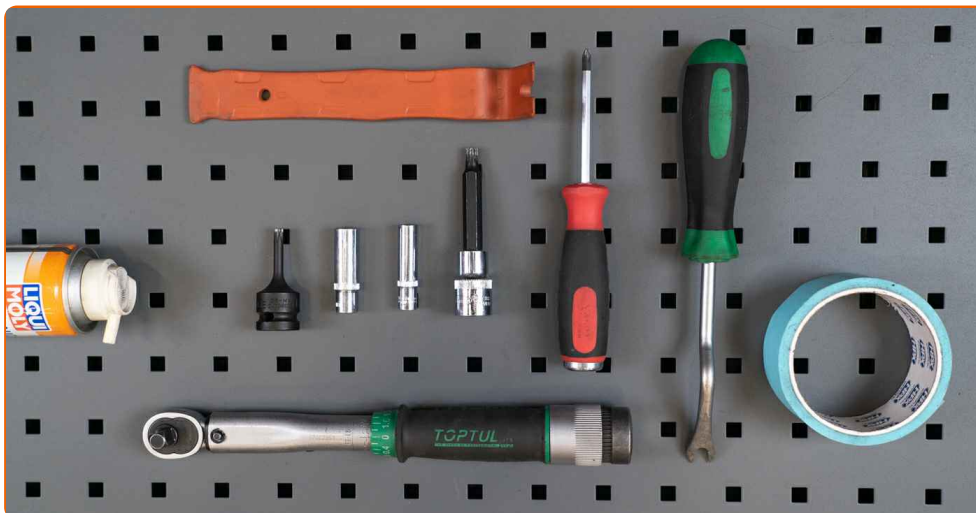
### **ⓘ Important!**

This replacement procedure can be used for:

SEAT Toledo II Saloon (1M2) 1.6, SEAT Toledo II Saloon (1M2) 1.8 20V, SEAT Toledo II Saloon (1M2) 2.3 V5, SEAT Toledo II Saloon (1M2) 1.9 TDI, SEAT Leon Hatchback (1M1) 1.6, SEAT Leon Hatchback (1M1) 1.9 TDI, SEAT Leon Hatchback (1M1) 1.4 16V, SEAT Leon Hatchback (1M1) 1.8 20V T, SEAT Leon Hatchback (1M1) 1.9 SDI, SEAT Leon Hatchback (1M1) 1.8 20V T 4, SEAT Toledo II Saloon (1M2) 1.4 16V, SEAT Leon Hatchback (1M1) 1.6 16 V, SEAT Leon Hatchback (1M1) 2.8 Cupra 4, SEAT Toledo II Saloon (1M2) 1.6 16V, SEAT Toledo II Saloon (1M2) 2.3 V5 20V, (+ 5)

The steps may slightly vary depending on the car design.

REPLACEMENT: WINDOW REGULATOR – SEAT LEON  
1M1. TOOLS YOU NEED:



- Electronic spray
- Torque wrench
- Drive socket # 8
- Drive socket # 10
- Torx bit T30
- XZN socket bit # 8
- Ratchet wrench
- Phillips screwdriver
- Plastic trim tool
- Clip removal tool
- Painter's tape

**BUY TOOLS**

Replacement: window regulator – Seat Leon 1M1. Tip from AUTODOC experts:

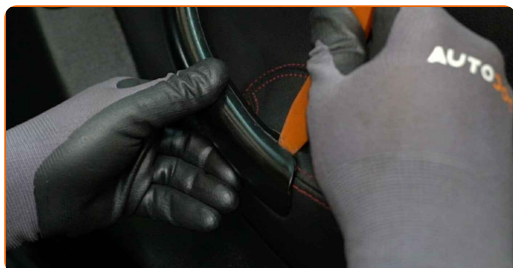
- All work should be done with the engine stopped.

## REPLACEMENT: WINDOW REGULATOR – SEAT LEON 1M1. TAKE THE FOLLOWING STEPS:

- 1 Open the car door.



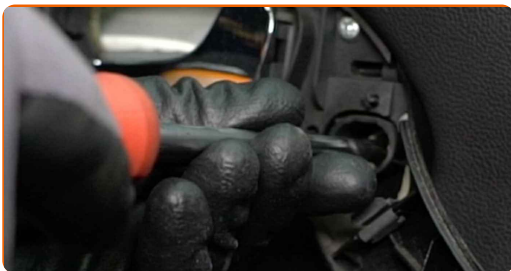
- 2 Detach the door handle trim panel. Use a plastic trim tool.



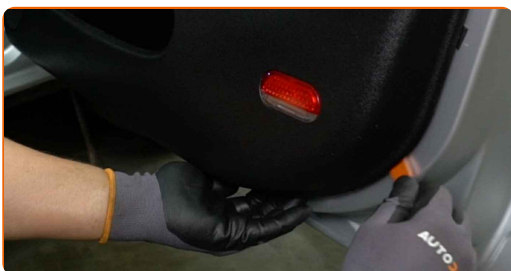
### AUTODOC recommends:

- Replacement: window regulator – Seat Leon 1M1. To avoid damaging the part when removing it, do not use excessive force.

**3** Unscrew the door card fasteners. Use a Phillips screwdriver.



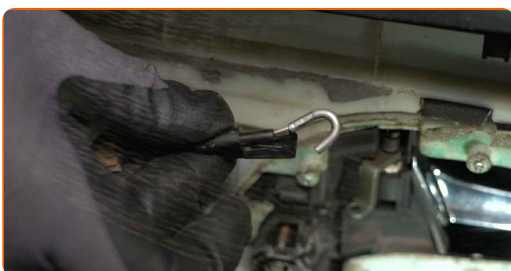
**4** Detach the door card. Use a plastic trim tool.



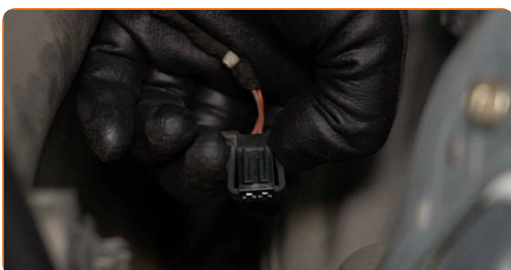
**Replacement: window regulator – Seat Leon 1M1. AUTODOC recommends:**

- Do not apply excessive force when removing the part. Otherwise you may damage it.

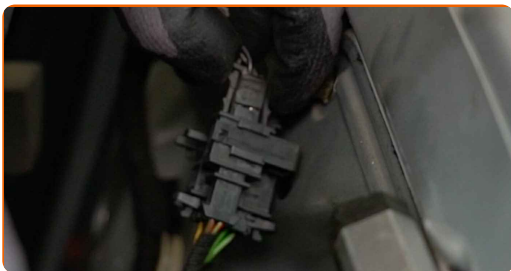
**5** Detach the door lock actuator cable.



**6** Detach the bulb connector.



**7** Detach the speaker connector.

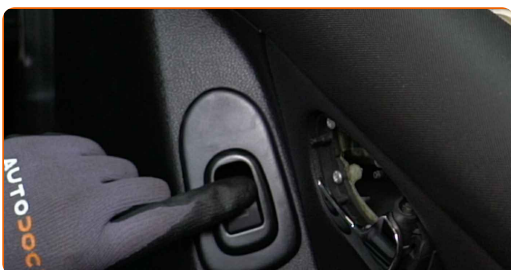


**8** Remove the covers from the window raiser fasteners. Use a plastic trim tool.



**9** Switch on the ignition.

**10** Lower the window glass.



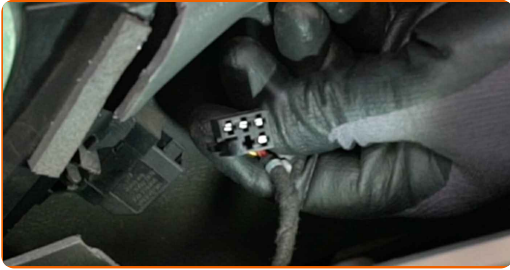
Replacement: window regulator – Seat Leon 1M1. Professionals recommend:

- Continue lowering the window glass until its fasteners become visible.

**11** Switch off the ignition.

**12**

Detach the connector for the power window switch module.



**13**

Unscrew the window glass fasteners. Use a drive socket #10. Use a ratchet wrench.

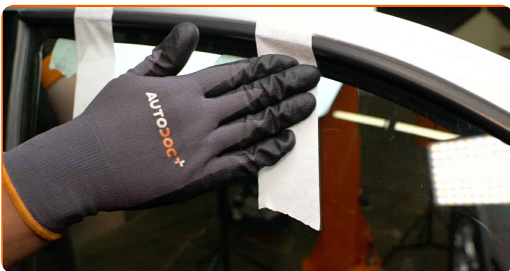


**AUTODOC recommends:**

- To avoid injury, hold the glass when unscrewing the fasteners.

**14**

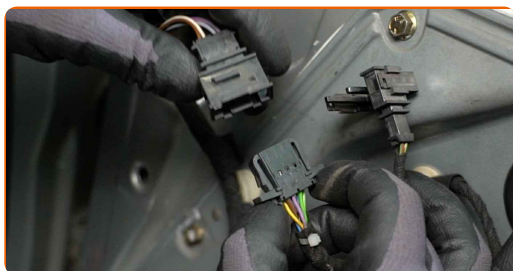
Raise the window glass all the way up and secure it on the door frame with masking tape.



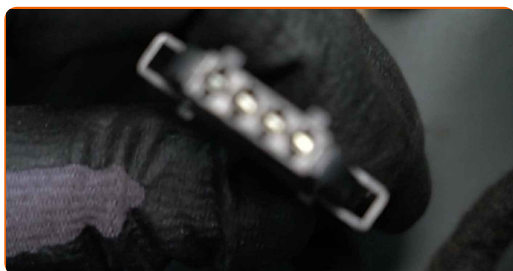
**Replacement: window regulator – Seat Leon 1M1. Tip from AUTODOC experts:**

- To avoid injury, hold the glass when raising it.

**15** Detach the power mirror switch connector.



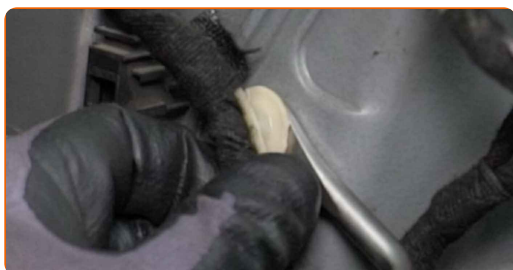
**16** Detach the speaker connector.



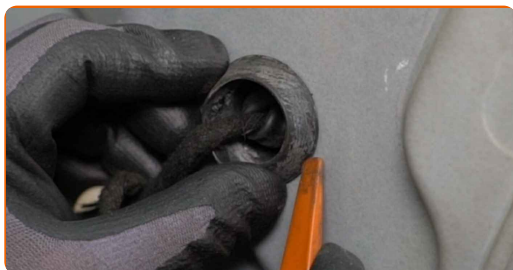
**17** Detach the power window connector.



**18** Detach the power window wiring harness. Use a clip removal tool.



**19** Remove the door panel covers. Use a plastic trim tool.





**20** Unscrew the door panel fasteners. Use a drive socket #10. Use a ratchet wrench.



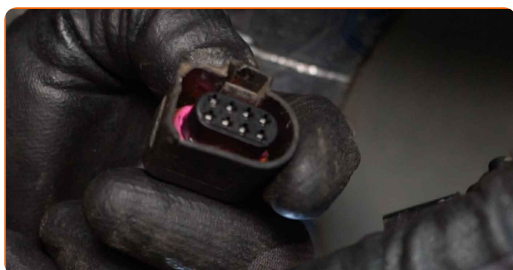
**21** Unscrew the door lock fasteners. Use XZN #8. Use a ratchet wrench.



**22** Remove the door panel together with the window regulator linkage.



**23** Detach the door lock connector.



**24** Remove the covers from the window raiser fasteners. Use a plastic trim tool.



**25** Install the covers on the window raiser fasteners.

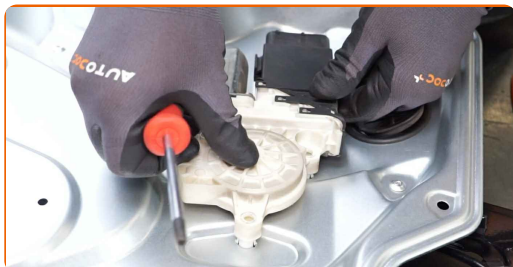
**26** Unscrew the fasteners of the power window motor. Use Torx T30. Use a ratchet wrench.



**27** Remove the power window motor.



**28** Install the power window motor.



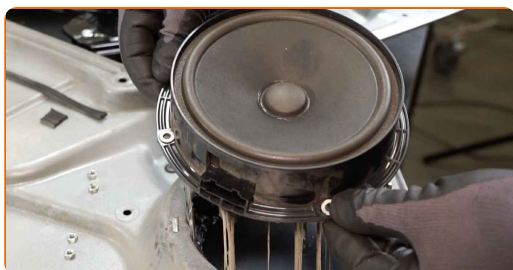
**29** Screw in the power window motor fasteners. Use Torx T30. Use a ratchet wrench.



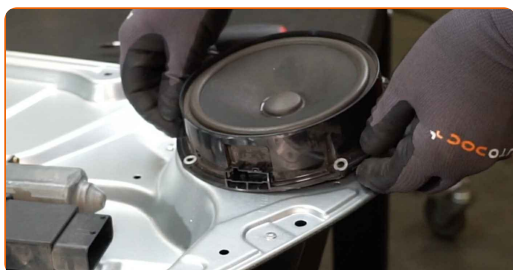
**30** Unscrew the speaker's fasteners. Use a drive socket #8. Use a ratchet wrench.



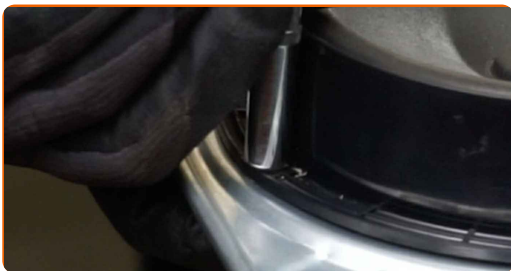
**31** Remove the speaker.



**32** Install the speaker.



**33** Screw in the speaker's fasteners. Use a drive socket #8. Use a ratchet wrench.



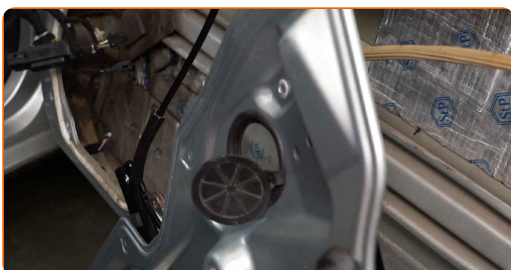
**34** Remove the connector holder.



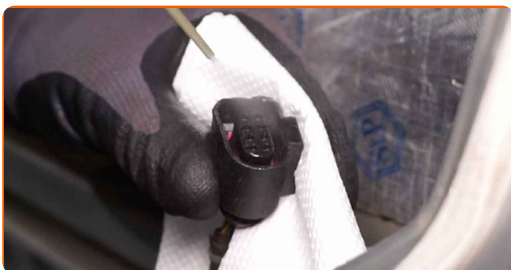
**35** Install the connector holder on the new door panel.



**36** Install the door panel together with the window regulator linkage.



**37** Treat the door lock connector. Use dielectric grease.



**38** Attach the door lock connector.

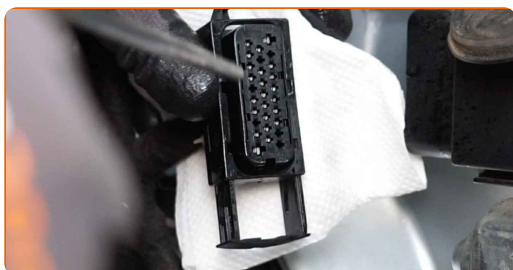


**39** Screw in the door panel fasteners. Use a drive socket #10. Use a ratchet wrench.



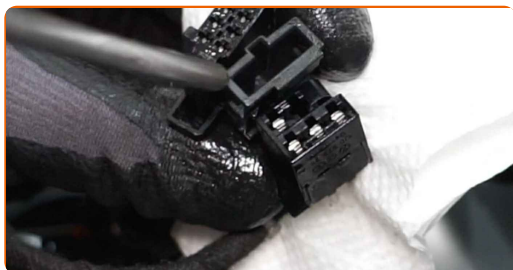
**40** Install the door panel covers.

**41** Treat the power window module connector. Use dielectric grease.

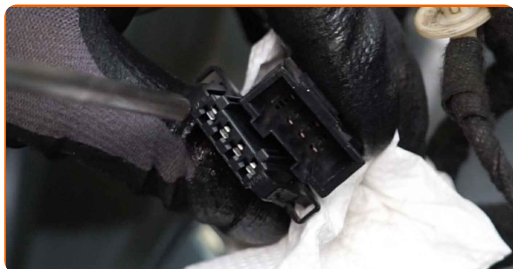


**42** Attach the power window connector.

**43** Treat the speakers' connectors. Use dielectric grease.

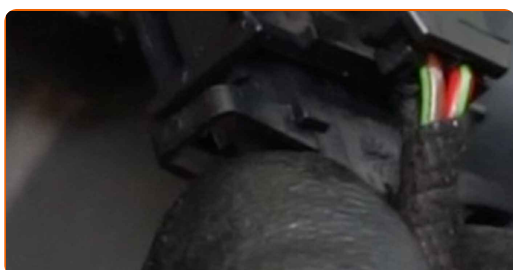


**44** Treat the connector of the power mirror switch. Use dielectric grease.



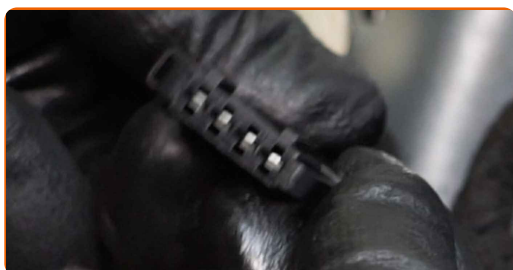
**45** Treat the connector for the power window switch module. Use dielectric grease.

**46** Attach the mirror adjuster connector to the door.

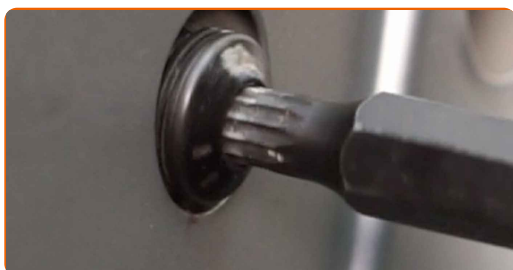


**47** Attach the speaker connector.

**48** Treat the bulb connector. Use dielectric grease.



**49** Screw in the door lock's fasteners. Use XZN #8. Use a ratchet wrench.



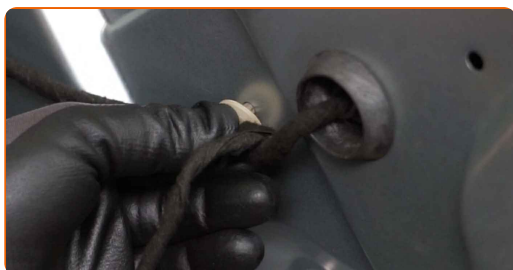
**50** Tighten the door lock fasteners. Use XZN #8. Use a torque wrench. Tighten it to 20 Nm torque.



**51** Tighten the door panel fasteners. Use a drive socket #10. Use a torque wrench. Tighten it to 8 Nm torque.



**52** Attach the power window wiring harness.



**53** Remove the painter's tape.



54

Lower the window glass and install it to its mounting seat in the window raiser mechanism.



Replacement: window regulator – Seat Leon 1M1. AUTODOC experts recommend:

- To avoid injury, hold the glass when lowering it.

55

Screw in the window glass fasteners. Use a drive socket #10. Use a ratchet wrench.

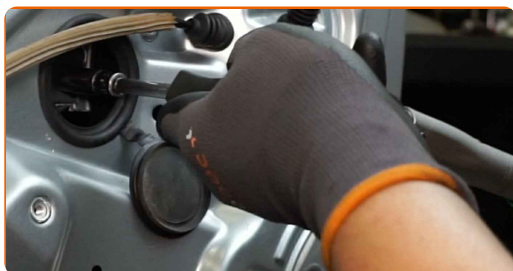


AUTODOC recommends:

- To avoid injury, hold the glass when screwing in the fasteners.



**56** Tighten the window glass fasteners. Use a drive socket #10. Use a torque wrench. Tighten it to 6 Nm torque.



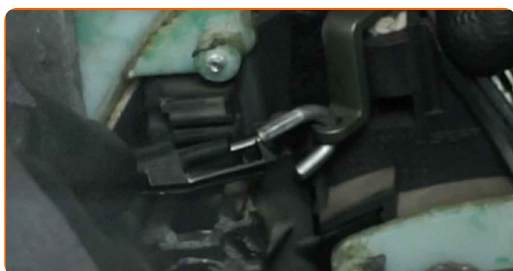
**Replacement: window regulator – Seat Leon 1M1. Tip from AUTODOC:**

- Do not apply too much force when tightening the fasteners. Overtightening may damage the glass.

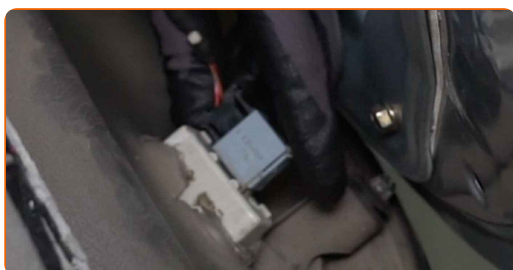
**57** Install the covers on the window raiser fasteners.



**58** Attach the door lock actuator cable.



**59** Attach the bulb connector.



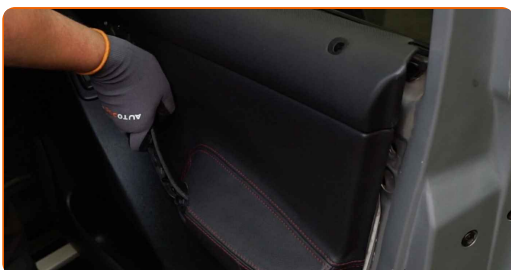
**60** Attach the connector for the power window switch module.



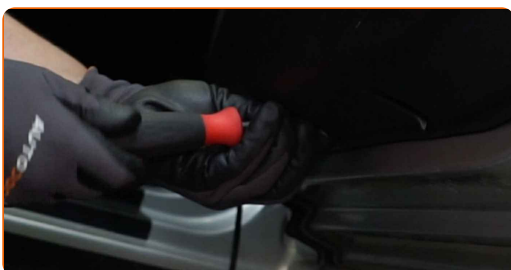
**61** Attach the speaker connector.



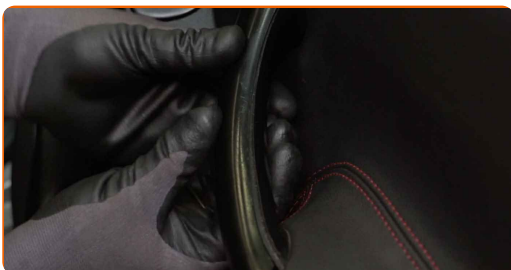
**62** Reinstall the door card.



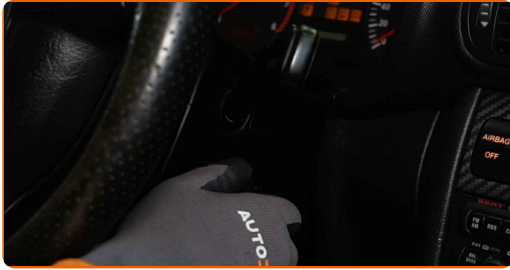
**63** Screw in the door card fasteners. Use a Phillips screwdriver.



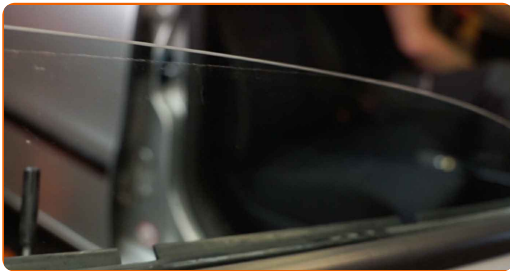
**64** Attach the door handle trim panel.



**65** Switch on the ignition.



**66** Check if the window regulator functions correctly.



**67** Switch off the ignition.

**68** Close the car door.



**WELL DONE!** 

**VIEW MORE TUTORIALS**

# AUTODOC – TOP QUALITY AND AFFORDABLE CAR PARTS ONLINE

**AUTODOC MOBILE APP: GREAT DEALS AND CONVENIENT SHOPPING**



**+ AUTODOC**

GET IT ON  
**Google Play**

Download on the  
**App Store**

**Download**

**A GREAT SELECTION OF SPARE PARTS FOR YOUR CAR**

**BUY SPARE PARTS FOR SEAT**

**WINDOW REGULATOR: A WIDE SELECTION**

**CHOOSE CAR PARTS FOR SEAT LEON 1M1**

**WINDOW REGULATOR FOR SEAT: BUY NOW**

**WINDOW REGULATOR FOR SEAT LEON 1M1: THE BEST DEALS & OFFERS**

### **DISCLAIMER:**

The document contains only general recommendations that may be useful for you when you perform repair or replacement work. AUTODOC shall not be liable for any loss, injury, damage of property occurring in the repair or replacement process due to incorrect use or misinterpretation of the provided information.

AUTODOC shall not be liable for any possible mistakes and uncertainties in this guide. The information provided is for information purposes only and cannot replace advice from specialists.

AUTODOC shall not be liable for incorrect or hazardous usage of equipment, tools and car parts. AUTODOC strongly recommends to be careful and observe the safety rules when performing repair or replacement works. Remember: usage of low quality auto parts does not guarantee you the appropriate level of road safety.

© Copyright 2022 – All the contents of this website, in particular texts, photographs and graphics, are protected by copyright. All rights, including reproduction, publication, editing and translation rights, are reserved by AUTODOC GmbH.