



How to change air filter
on **Seat Leon 1M1** –
replacement guide

VIDEO TUTORIAL



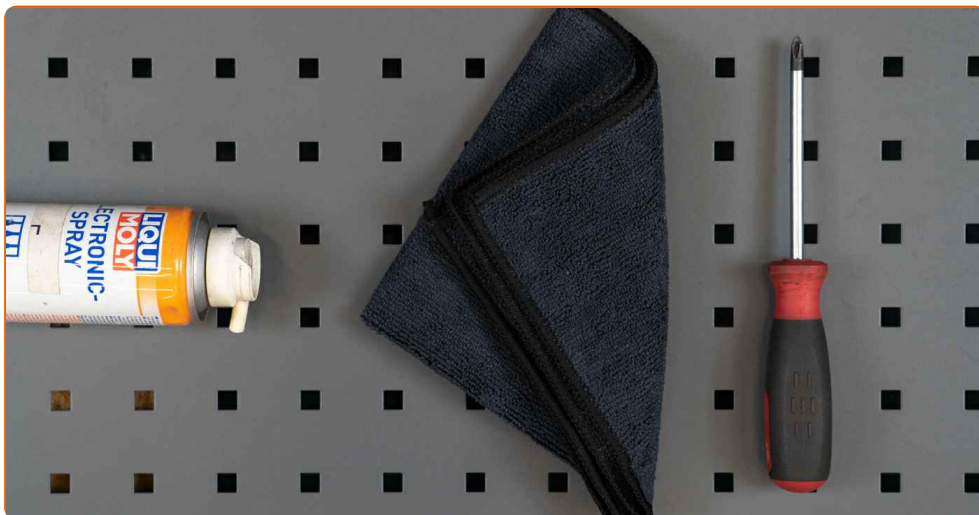
i Important!

This replacement procedure can be used for:

SEAT Toledo II Saloon (1M2) 1.6, SEAT Toledo II Saloon (1M2) 1.8 20V, SEAT Toledo II Saloon (1M2) 2.3 V5, SEAT Toledo II Saloon (1M2) 1.9 TDI, SEAT Leon Hatchback (1M1) 1.6, SEAT Leon Hatchback (1M1) 1.9 TDI, SEAT Leon Hatchback (1M1) 1.8 20V T, SEAT Leon Hatchback (1M1) 1.9 SDI, SEAT Leon Hatchback (1M1) 1.8 20V T 4, SEAT Leon Hatchback (1M1) 2.8 Cupra 4, SEAT Toledo II Saloon (1M2) 2.3 V5 20V, SEAT Leon Hatchback (1M1) 1.8 T Cupra R, SEAT Leon Hatchback (1M1) 1.9 TDI Syncro, SEAT Toledo II Saloon (1M2) 1.8 20VT, SEAT Toledo II Saloon (1M2) 1.9 TDI 4Drive

The steps may slightly vary depending on the car design.

REPLACEMENT: AIR FILTER – SEAT LEON 1M1. LIST OF THE TOOLS YOU'LL NEED:



- Electronic spray
- Microfibre towel
- Phillips screwdriver
- Fender cover

[BUY TOOLS](#)

Replacement: air filter – Seat Leon 1M1. Professionals recommend:

- Follow the terms, recommendations and requirements of the part operation provided by the manufacturer.
- All work should be done with the engine stopped.

CARRY OUT REPLACEMENT IN THE FOLLOWING ORDER:

1 Open the bonnet.

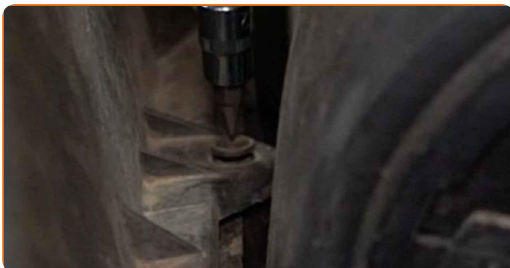
2 Use a fender protection cover to prevent damaging paintwork and plastic parts of the car.



3 Detach the mass air flow sensor connector.



4 Undo the fastening screws of the air filter cover. Use a Phillips screwdriver.



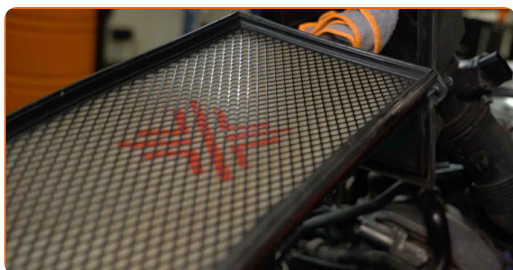
- 5 Slightly raise the cover of the air filter housing.



- 6 Cover the air intake hose with a microfibre towel to prevent dust and dirt from getting into the system.



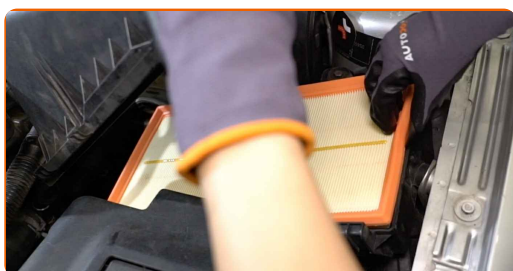
- 7 Remove the filter element from the filter housing.



- 8 Clean the air filter cover and housing.



- 9 Insert a new filter element into the filter housing.



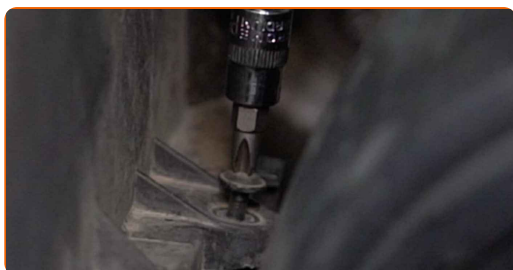
- 10** Remove the microfibre towel from the air intake hose.



- 11** Install the air filter cover. Fasten it.



- 12** Screw in the fastening screws of the air filter cover. Use a Phillips screwdriver.



- 13** Treat the mass air flow sensor connector. Use dielectric grease.

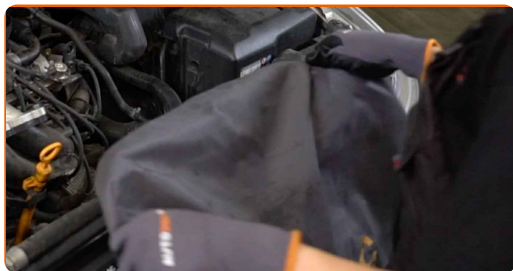


- 14** Attach the mass air flow sensor connector.

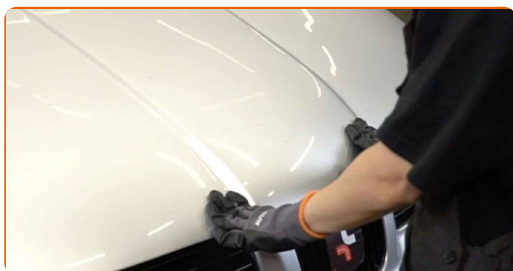


15

Remove the fender protection cover.

**16**

Close the bonnet.

**WELL DONE!** [VIEW MORE TUTORIALS](#)

AUTODOC – TOP QUALITY AND AFFORDABLE CAR PARTS ONLINE

AUTODOC MOBILE APP: GREAT DEALS AND CONVENIENT SHOPPING



+ AUTODOC

GET IT ON  **Google Play**

 **Download on the App Store**

Download

A GREAT SELECTION OF SPARE PARTS FOR YOUR CAR

BUY SPARE PARTS FOR SEAT

AIR FILTER: A WIDE SELECTION

CHOOSE CAR PARTS FOR SEAT LEON 1M1

AIR FILTER FOR SEAT: BUY NOW

AIR FILTER FOR SEAT LEON 1M1: THE BEST DEALS & OFFERS

DISCLAIMER:

The document contains only general recommendations that may be useful for you when you perform repair or replacement work. AUTODOC shall not be liable for any loss, injury, damage of property occurring in the repair or replacement process due to incorrect use or misinterpretation of the provided information.

AUTODOC shall not be liable for any possible mistakes and uncertainties in this guide. The information provided is for information purposes only and cannot replace advice from specialists.

AUTODOC shall not be liable for incorrect or hazardous usage of equipment, tools and car parts. AUTODOC strongly recommends to be careful and observe the safety rules when performing repair or replacement works. Remember: usage of low quality auto parts does not guarantee you the appropriate level of road safety.

© Copyright 2022 – All the contents of this website, in particular texts, photographs and graphics, are protected by copyright. All rights, including reproduction, publication, editing and translation rights, are reserved by AUTODOC GmbH.