



How to change front  
lower arm on **VW Golf 4**  
– replacement guide

## VIDEO TUTORIAL

** Important!**

This replacement procedure can be used for:

VW Golf IV Hatchback (1J1) 1.9 TDI, VW Golf IV Hatchback (1J1) 1.6, VW Golf IV Hatchback (1J1) 1.9 SDI, VW Golf IV Hatchback (1J1) 1.4 16V, VW Golf IV Hatchback (1J1) 1.8, VW Golf IV Hatchback (1J1) 1.8 T, VW Golf IV Hatchback (1J1) 2.3 V5, VW New Beetle Hatchback (9C1, 1C1) 2.0, VW New Beetle Hatchback (9C1, 1C1) 1.9 TDI, VW Golf IV Hatchback (1J1) 1.9 TDI 4motion, VW Golf IV Hatchback (1J1) 1.8 4motion, VW Bora Saloon (1J2) 1.6, VW Bora Saloon (1J2) 2.0, VW Bora Saloon (1J2) 2.3 V5, VW Bora Saloon (1J2) 1.9 TDI, (+ 70)

The steps may slightly vary depending on the car design.

**REPLACEMENT: FRONT LOWER ARM – VW GOLF 4.  
TOOLS YOU NEED:**



- Wire brush
- WD-40 spray
- Brake cleaner
- Copper grease
- Combination spanner #18
- Drive socket # 13
- Drive socket # 16
- Drive socket # 18
- Wheel impact socket #17
- Ratchet wrench
- Torque wrench
- Tap wrench
- Crow bar
- Hydraulic transmission jack
- Wheel chock

**BUY TOOLS**

Replacement: front lower arm – VW Golf 4. Tip from AUTODOC:

- The replacement procedure is identical for the left and right lower control arms.
- All work should be done with the engine stopped.

**REPLACEMENT: FRONT LOWER ARM – VW GOLF 4. RECOMMENDED SEQUENCE OF STEPS:**

**1** Secure the wheels with chocks.

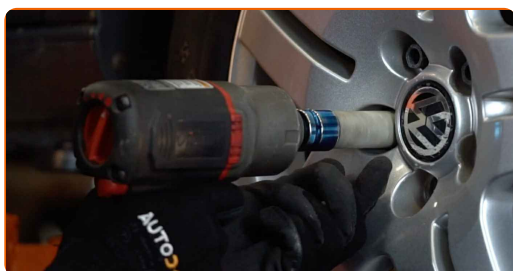
**2** Loosen the wheel mounting bolts. Use wheel impact socket #17.



**3** Raise the front of the car and secure on supports.



**4** Unscrew the wheel bolts.

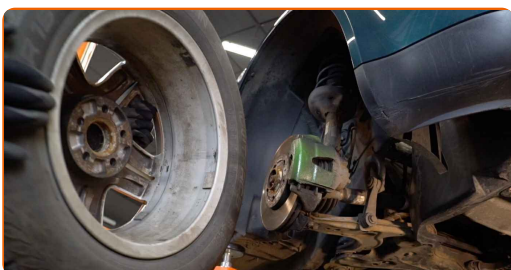


**AUTODOC recommends:**

- Warning! To avoid injury, hold the wheel while unscrewing the fastening bolts. VW Golf 4

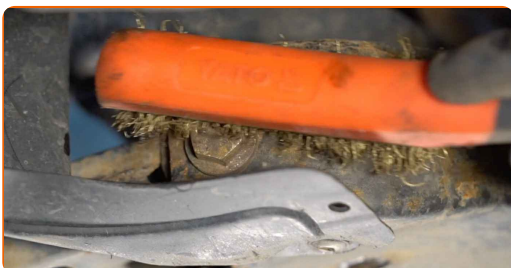
**5**

Remove the wheel.



**6**

Clean all joints of the arm. Use a wire brush. Use WD-40 spray.



**AUTODOC recommends:**

- Replacement: front lower arm – VW Golf 4. After applying the spray, wait a few minutes.
- Wear protective goggles.

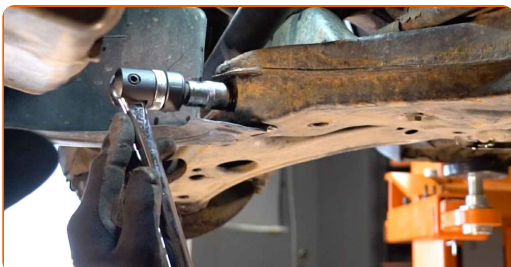
- 7** Unscrew the fastener connecting the stabilizer bar with the control arm. Use a drive socket #16. Use a tap wrench.



- 8** Unscrew the fastener connecting the ball joint to the suspension control arm. Use a drive socket #13. Use a tap wrench.



- 9** Loosen the front fastener of the control arm. Use a drive socket #18. Use a tap wrench.



- 10** Unscrew the rear arm fastener. Use a combination spanner #18. Use a drive socket #18. Use a tap wrench.





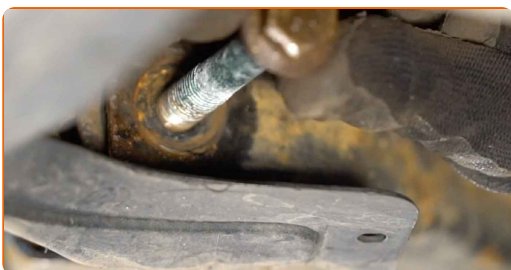
**11** Remove the rear fastener of the control arm.



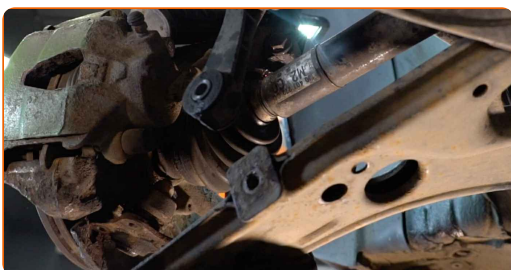
**12** Unscrew the front arm fastener. Use a drive socket #18. Use a ratchet wrench.



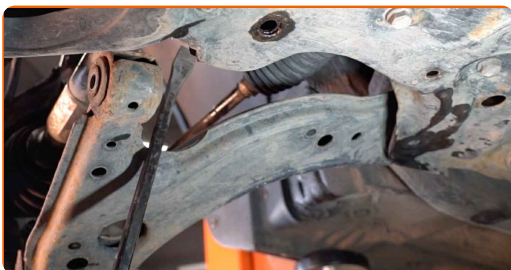
**13** Remove the front fastener of the control arm.



**14** Disconnect the spherical joint from the arm.



**15** Remove the arm. Use a crowbar.



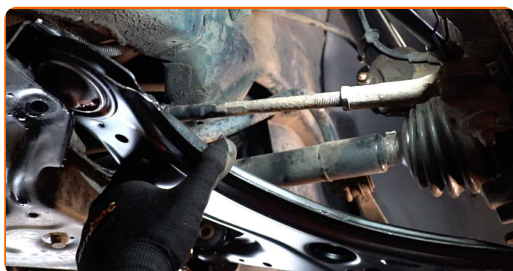
16

Clean the mounting seats and the thread of the suspension arm. Use a wire brush. Use WD-40 spray.



17

Install a new arm.

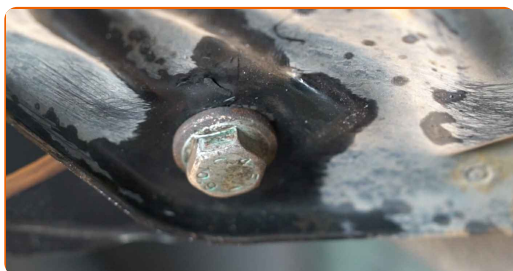


Replacement: front lower arm – VW Golf 4. AUTODOC experts recommend:

- During the installation process, use only new bolts and nuts.
- Do not damage the ball joint cover.

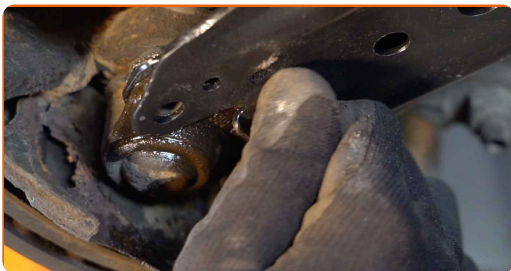
18

Install the control arm fasteners.

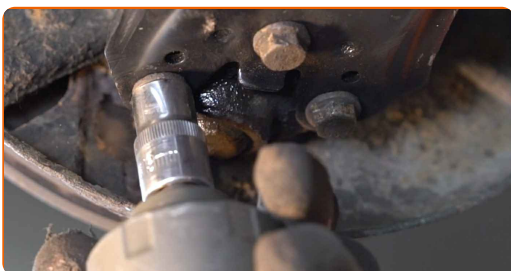




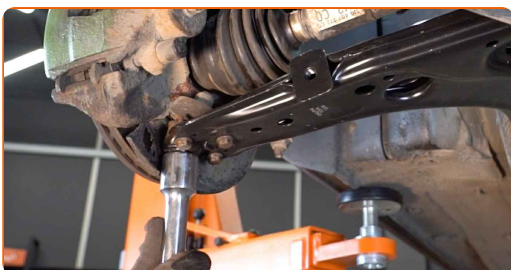
**19** Attach the ball joint to the control arm.



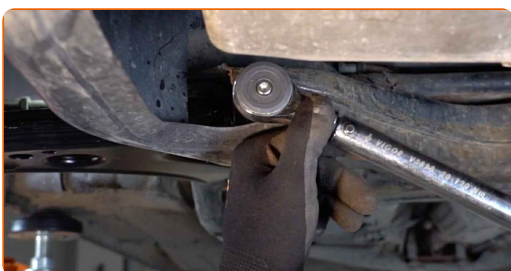
**20** Screw the fasteners of the ball joint. Use a drive socket #13. Use a ratchet wrench.



**21** Support the arm. Use a hydraulic transmission jack.



**22** Tighten the front fastener connecting the control arm to the subframe. Use a drive socket #18. Use a torque wrench. Tighten it to 70 Nm torque. +90°



**AUTODOC recommends:**

- Important! Be sure to use new fasteners.

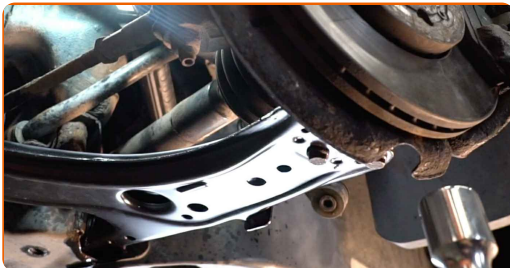
- 23** Tighten the rear fastener of the control arm. Use a drive socket #18. Use a torque wrench. Tighten it to 70 Nm torque.+90°



**AUTODOC recommends:**

- Important! Be sure to use new fasteners.

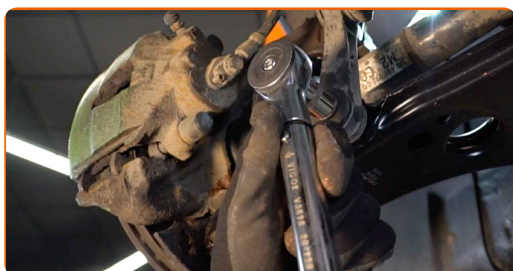
- 24** Remove the support from under the arm.



**AUTODOC recommends:**

- VW Golf 4 – Do not lower the transmission jack sharply to avoid damaging components and mechanisms of the car.

- 25** Tighten the fastener connecting the stabilizer bar with the control arm. Use a drive socket #16. Use a torque wrench. Tighten it to 15 Nm torque.+90°



**AUTODOC recommends:**

- Important! Be sure to use new fasteners.

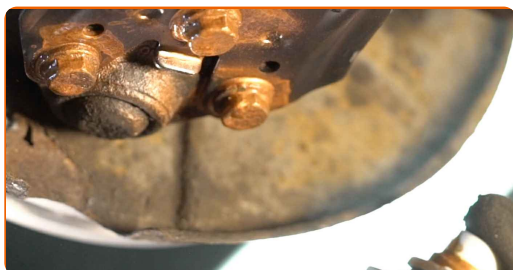
- 26** Tighten the ball joint fastener. Use a drive socket #13. Use a torque wrench. Tighten it to 20 Nm torque.+90°



**AUTODOC recommends:**

- Important! Be sure to use new fasteners.

- 27** Treat all joints of the arm. Use copper grease.



**28** Treat the surface where the brake disc contacts the wheel rim. Use copper grease.



**29** Clean the brake disk surface. Use a brake cleaner.



**AUTODOC recommends:**

- Replacement: front lower arm – VW Golf 4. After applying the spray, wait a few minutes.

**30** Install the wheel.



**AUTODOC recommends:**

- Warning! To avoid injury, hold the wheel while screwing in the fastening bolts on the car. VW Golf 4

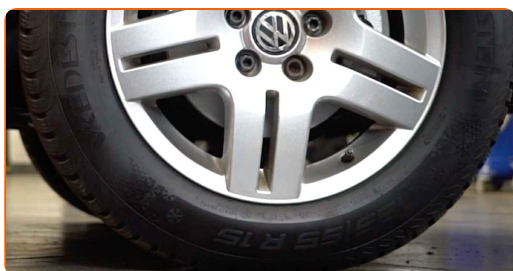
**31** Screw in the wheel bolts. Use wheel impact socket #17.



**32** Lower the car and working in a cross order, tighten the wheel bolts. Use a torque wrench. Tighten it to 120 nm torque.



**33** Remove the jacks and chocks.



**WELL DONE!** 

**VIEW MORE TUTORIALS**

# AUTODOC – TOP QUALITY AND AFFORDABLE CAR PARTS ONLINE

**AUTODOC MOBILE APP: GREAT DEALS AND CONVENIENT SHOPPING**



**+ AUTODOC**

GET IT ON  **Google Play**

 **Download on the App Store**

**Download**

**A GREAT SELECTION OF SPARE PARTS FOR YOUR CAR**

**BUY SPARE PARTS FOR VW**

**CONTROL ARM: A WIDE SELECTION**



**CHOOSE CAR PARTS FOR VW GOLF 4**

**CONTROL ARM FOR VW: BUY NOW**

**CONTROL ARM FOR VW GOLF 4: THE BEST DEALS & OFFERS**

### **DISCLAIMER:**

The document contains only general recommendations that may be useful for you when you perform repair or replacement work. AUTODOC shall not be liable for any loss, injury, damage of property occurring in the repair or replacement process due to incorrect use or misinterpretation of the provided information.

AUTODOC shall not be liable for any possible mistakes and uncertainties in this guide. The information provided is for information purposes only and cannot replace advice from specialists.

AUTODOC shall not be liable for incorrect or hazardous usage of equipment, tools and car parts. AUTODOC strongly recommends to be careful and observe the safety rules when performing repair or replacement works. Remember: usage of low quality auto parts does not guarantee you the appropriate level of road safety.

© Copyright 2022 – All the contents of this website, in particular texts, photographs and graphics, are protected by copyright. All rights, including reproduction, publication, editing and translation rights, are reserved by AUTODOC GmbH.